

PLAN A1

1 Bedroom + Den
725 S.F.

COAST
AT FRASER HEIGHTS



PLAN A1

1 Bedroom + Den
725 S.F.

COAST
AT FRASER HEIGHTS



PLAN A2

1 Bedroom
607 S.F.

COAST
AT FRASER HEIGHTS

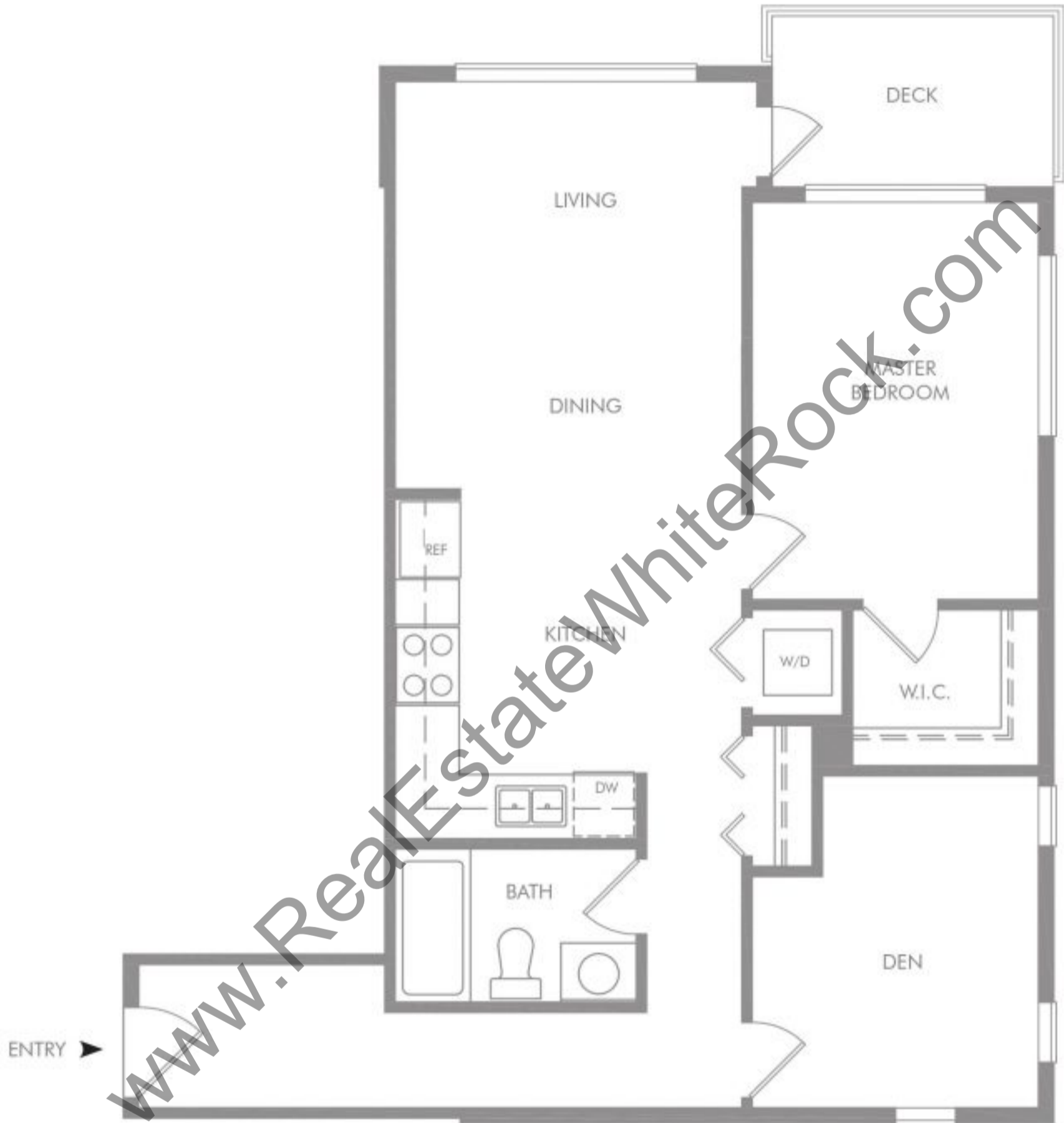


www.RealEstateWhiterock.com

PLAN A3

1 Bedroom + Den
784 S.F.

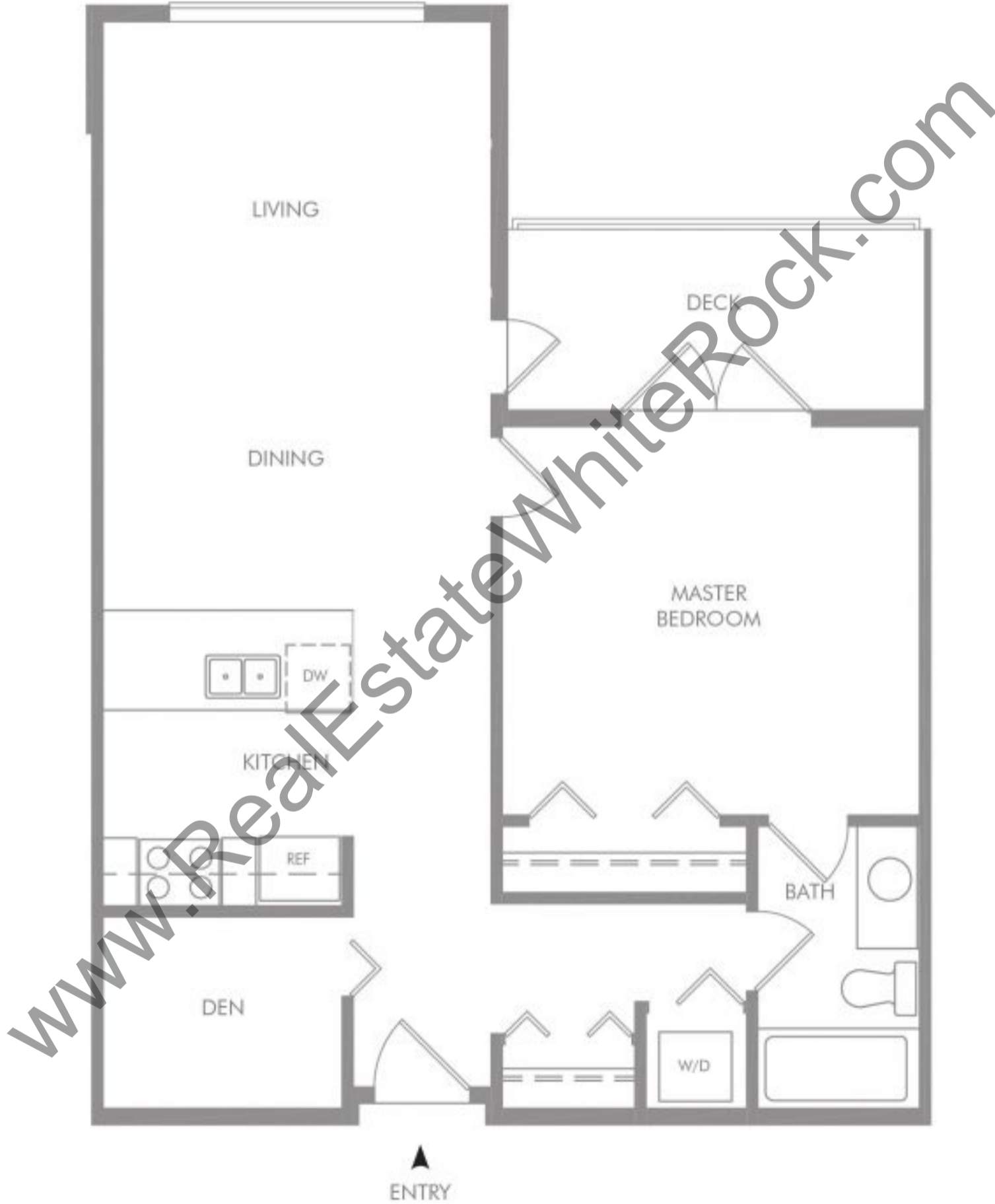
COAST
AT FRASER HEIGHTS



PLAN A5

1 Bedroom + Den
742 S.F.

COAST
AT FRASER HEIGHTS



PLAN A7

1 Bedroom + Den
612 S.F.

COAST
AT FRASER HEIGHTS



PLAN A8

1 Bedroom + Den
614 S.F.

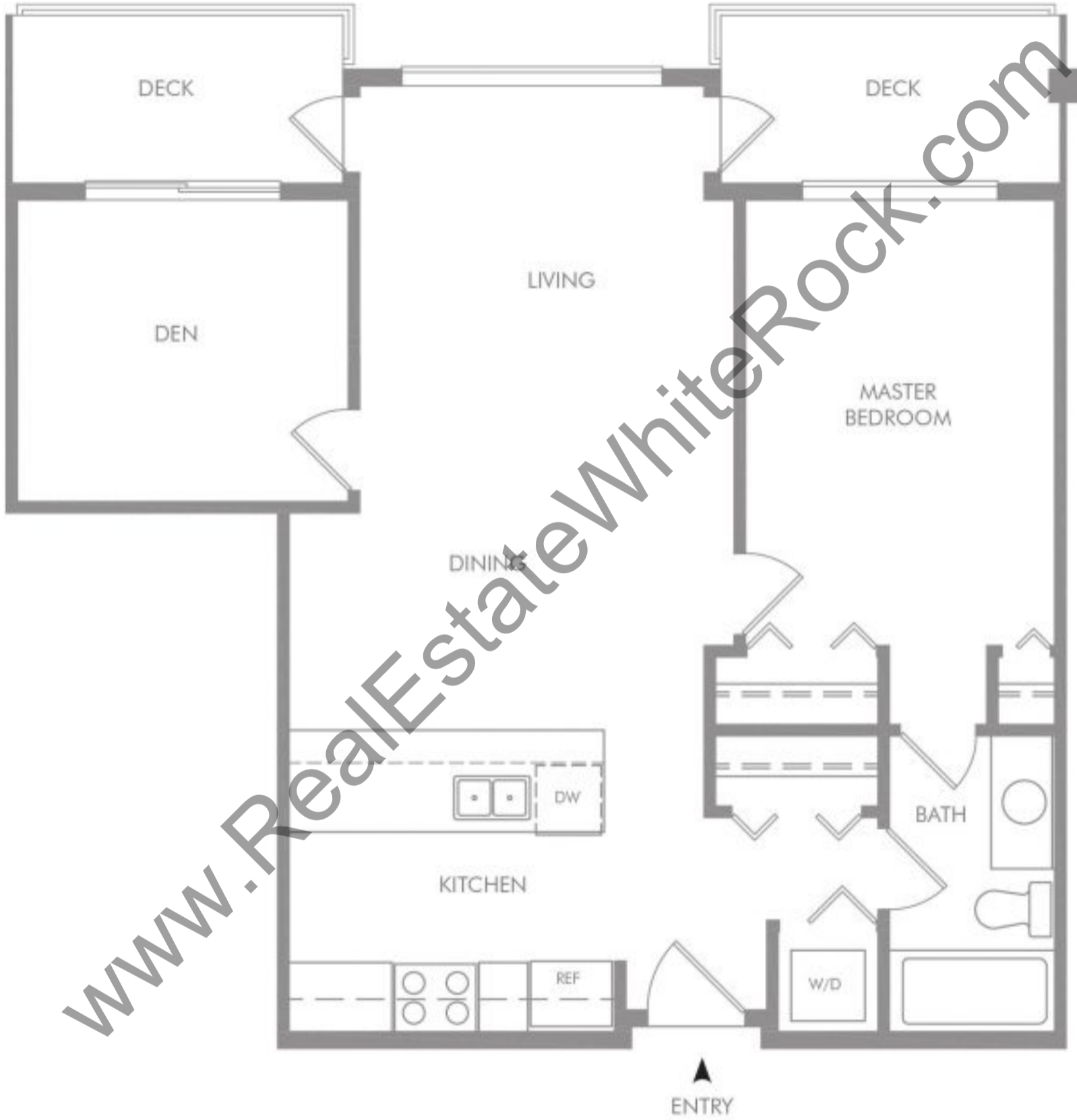
COAST
— AT FRASER HEIGHTS —



PLAN B

1 Bedroom + Den
754 S.F.

COAST
AT FRASER HEIGHTS



PLAN B1

1 Bedroom + Den
787 S.F.

COAST
AT FRASER HEIGHTS



PLAN B2

2 Bedroom
797 S.F.

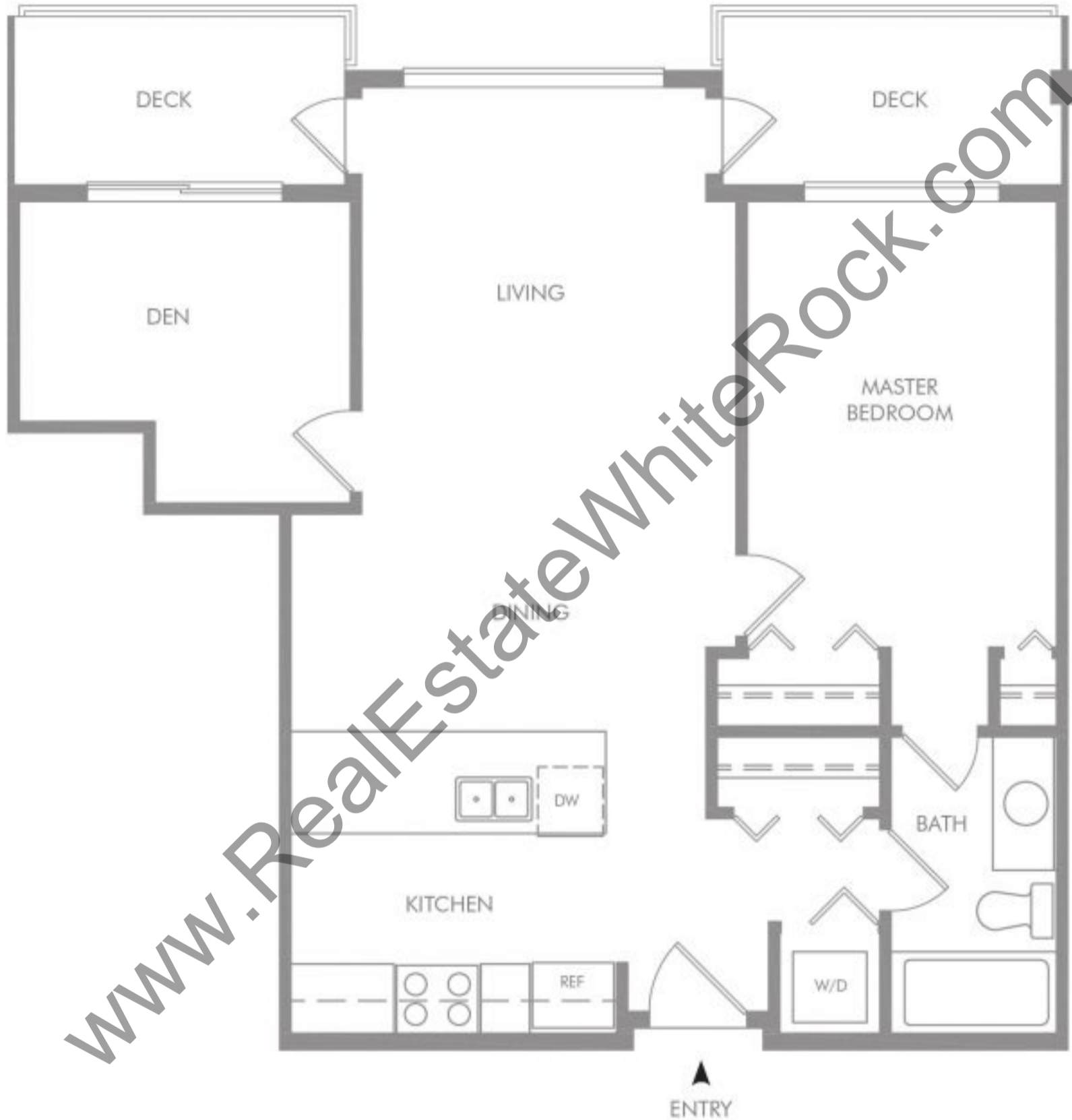
COAST
AT FRASER HEIGHTS



PLAN B3

1 Bedroom + Den
743 S.F.

COAST
AT FRASER HEIGHTS



PLAN C

1 Bedroom + Den
7207 S.F.

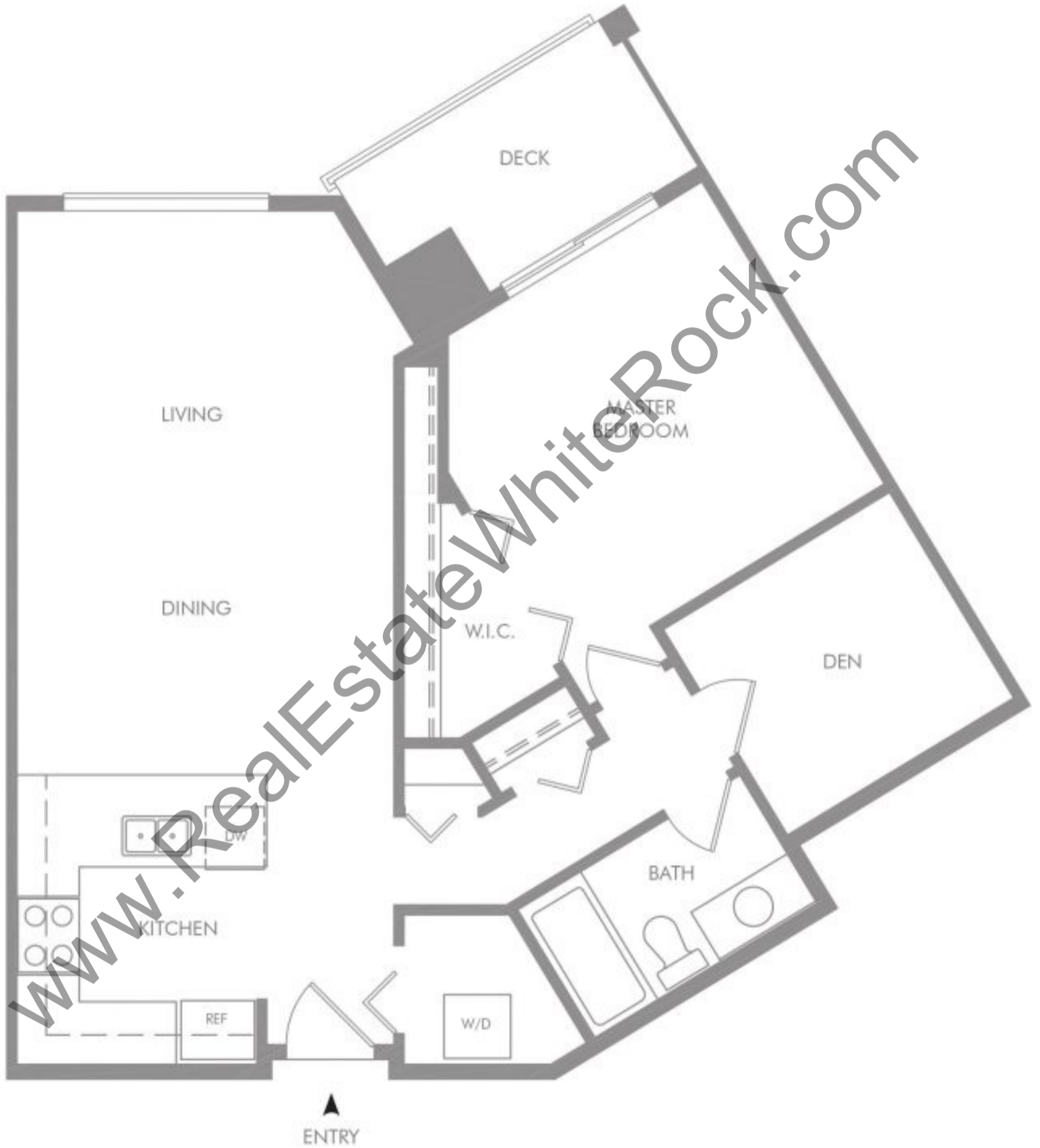
COAST
AT FRASER HEIGHTS



PLAN C1

1 Bedroom + Den
824 S.F.

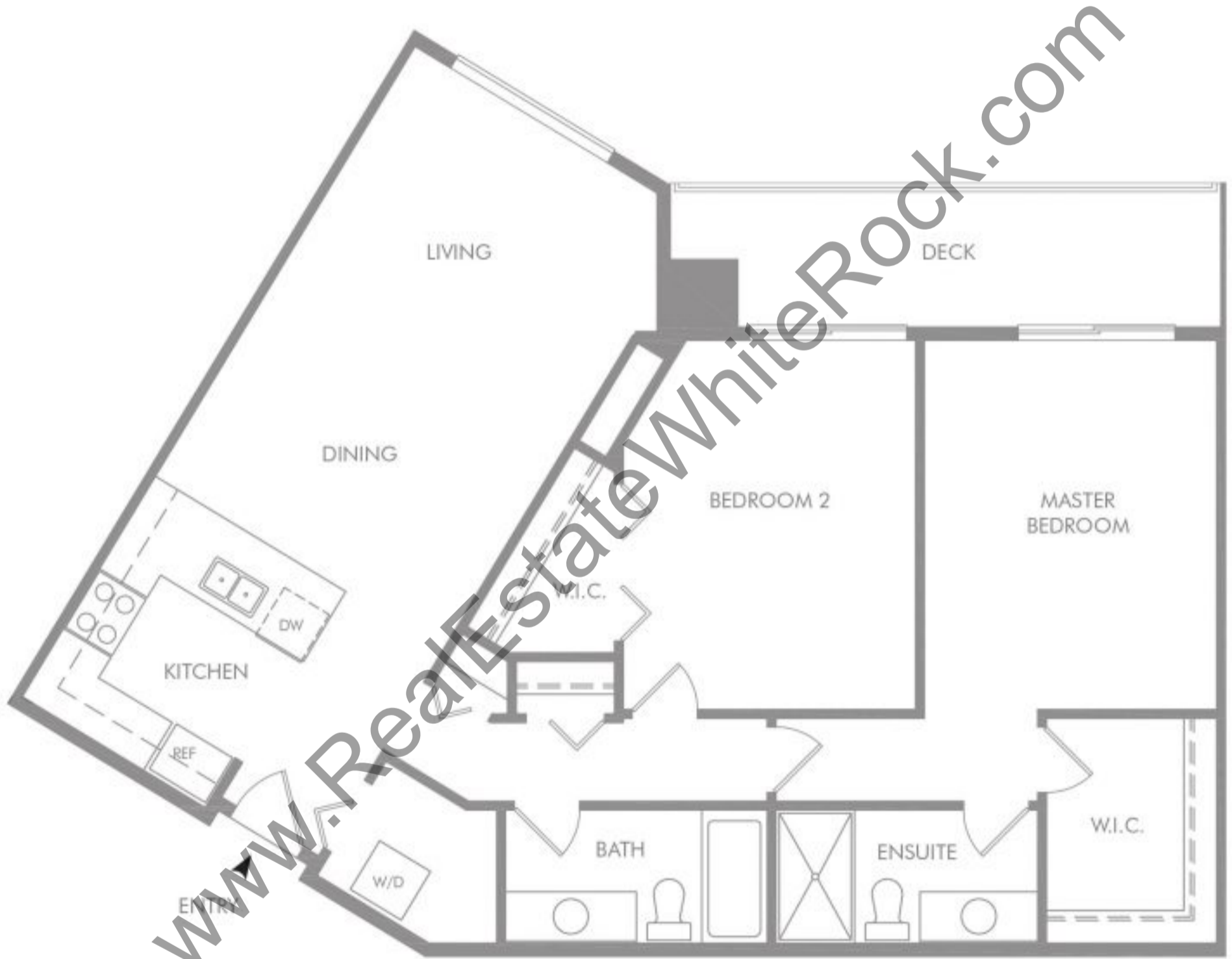
COAST
AT FRASER HEIGHTS



PLAN C2

1 Bedroom
1089 S.F.

COAST
AT FRASER HEIGHTS



PLAN D

1 Bedroom + Den
843 S.F.

COAST
AT FRASER HEIGHTS



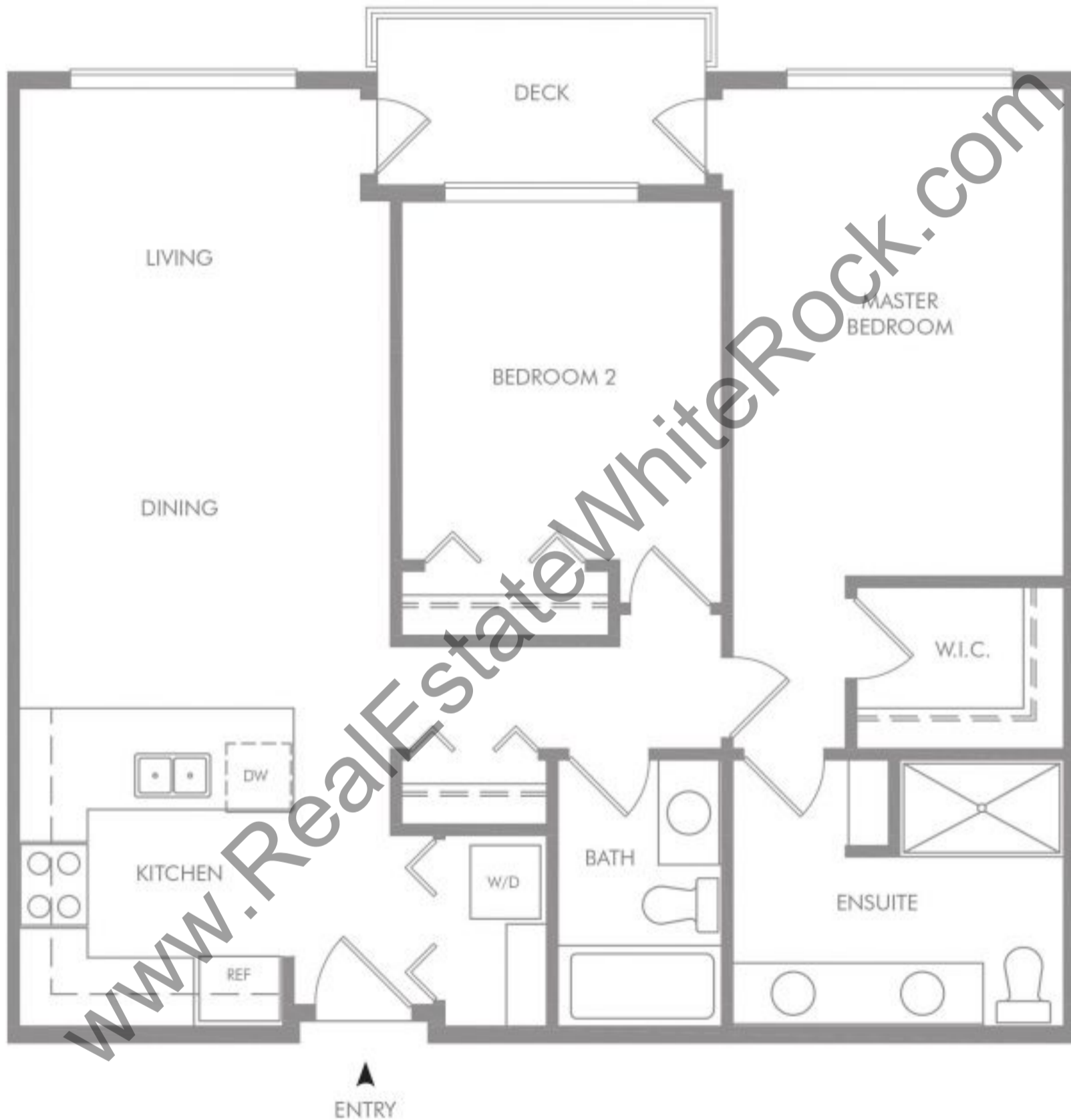
▲
ENTRY

www.RealEstateWhiteRock.com

PLAN E

2 Bedroom
943 S.F.

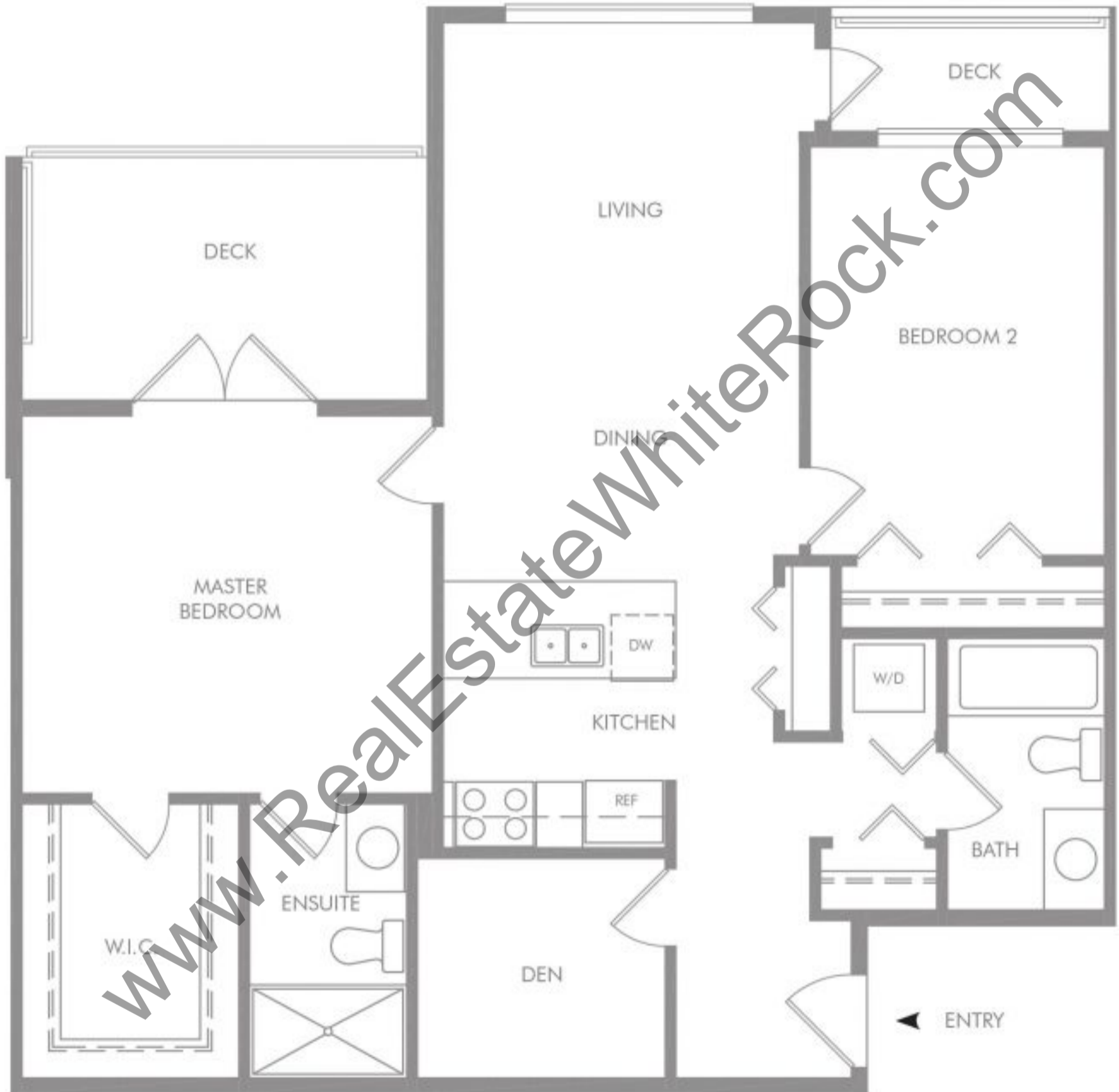
COAST
AT FRASER HEIGHTS



PLAN E1

1 Bedroom + Den
984 S.F.

COAST
AT FRASER HEIGHTS



www.RealEstateWhiteRock.com

PLAN E3

2 Bedroom
934 S.F.

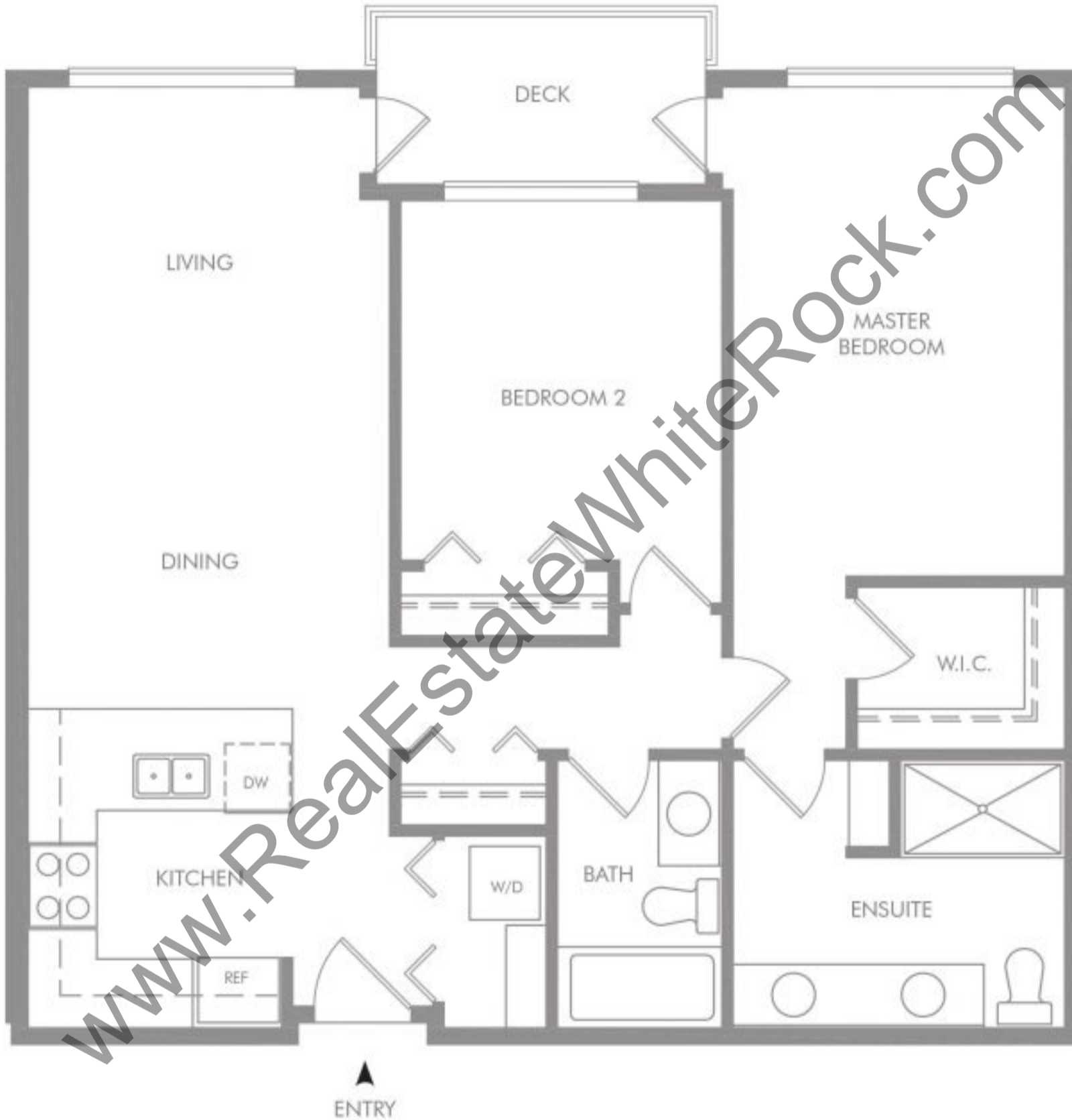
COAST
AT FRASER HEIGHTS



PLAN E4

2 Bedroom
943 S.F.

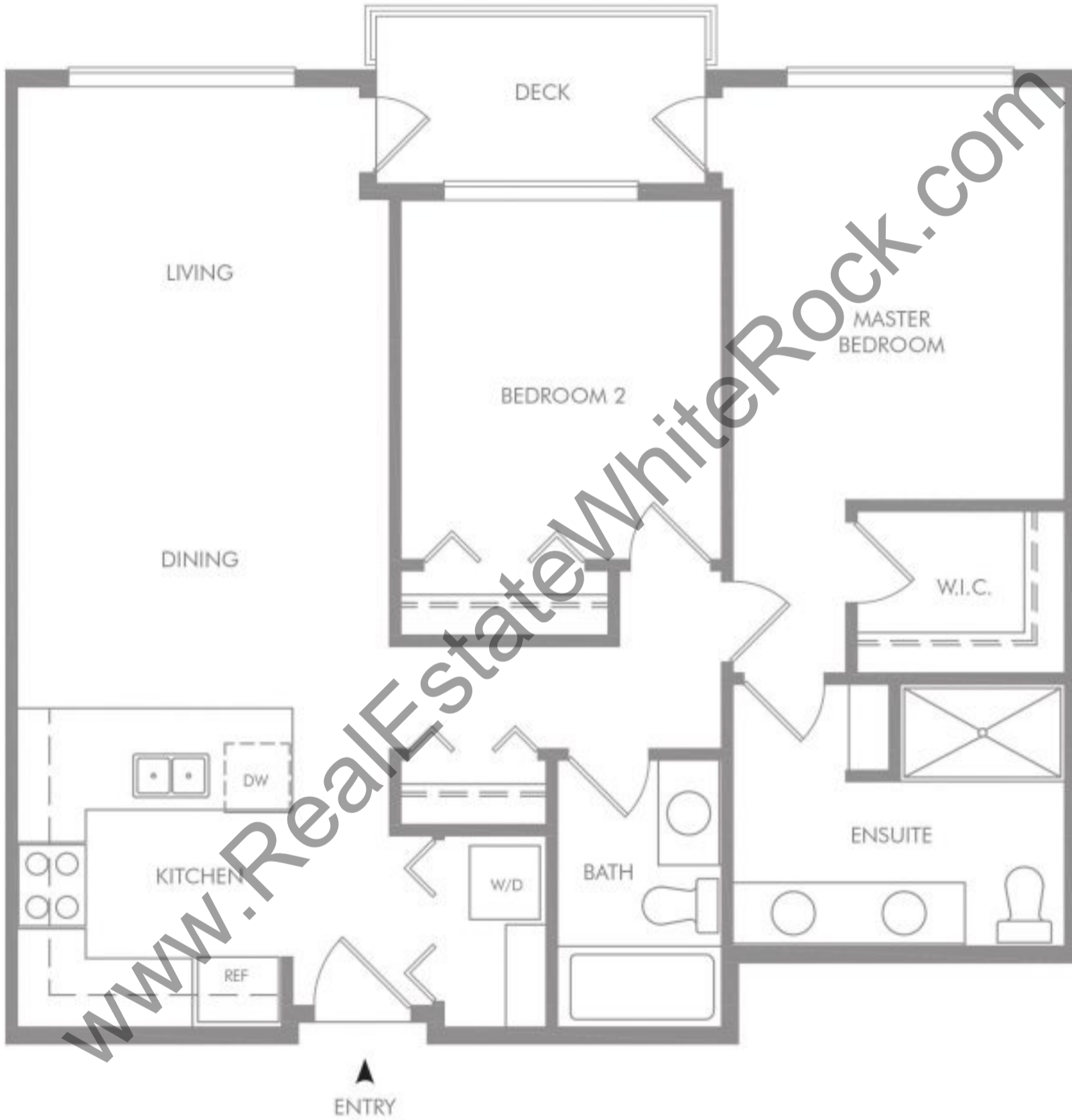
COAST
AT FRASER HEIGHTS



PLAN E5

2 Bedroom
926 S.F.

COAST
AT FRASER HEIGHTS



PLAN F

2 Bedroom
778 S.F.

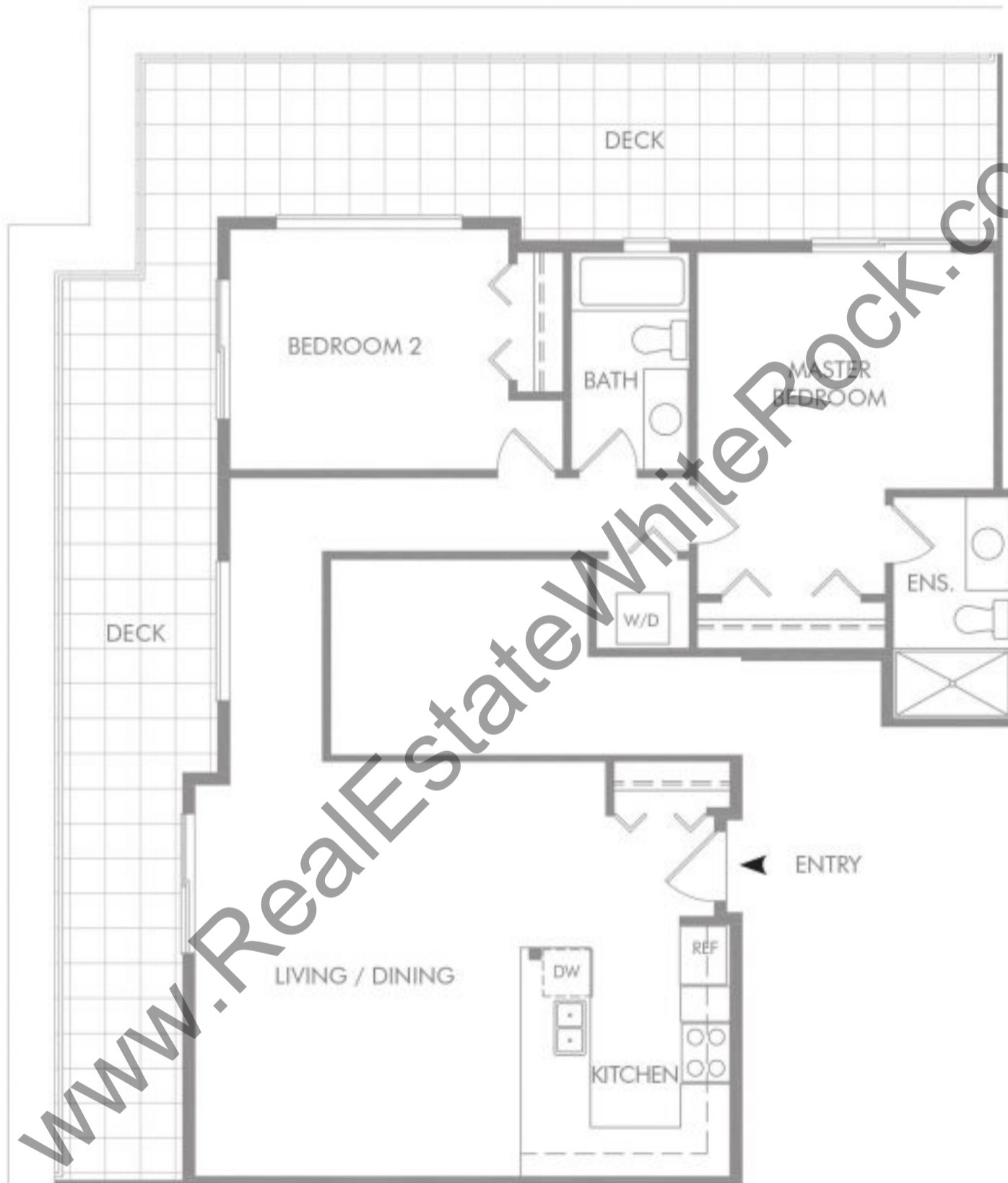
COAST
AT FRASER HEIGHTS



PLAN G

2 Bedroom
1041 S.F.

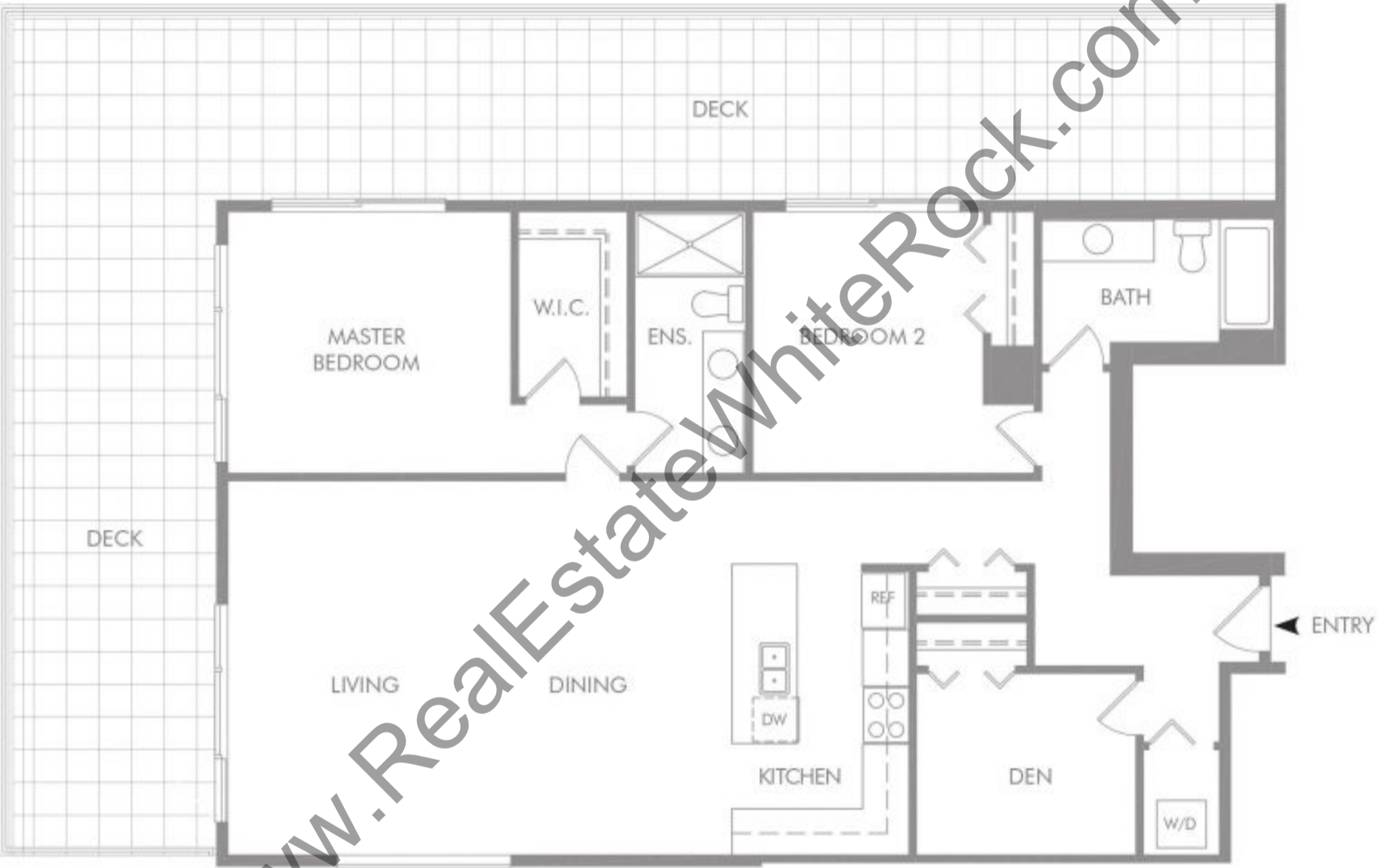
COAST
AT FRASER HEIGHTS



PLAN J1

2 Bedroom + Den
1383 S.F.

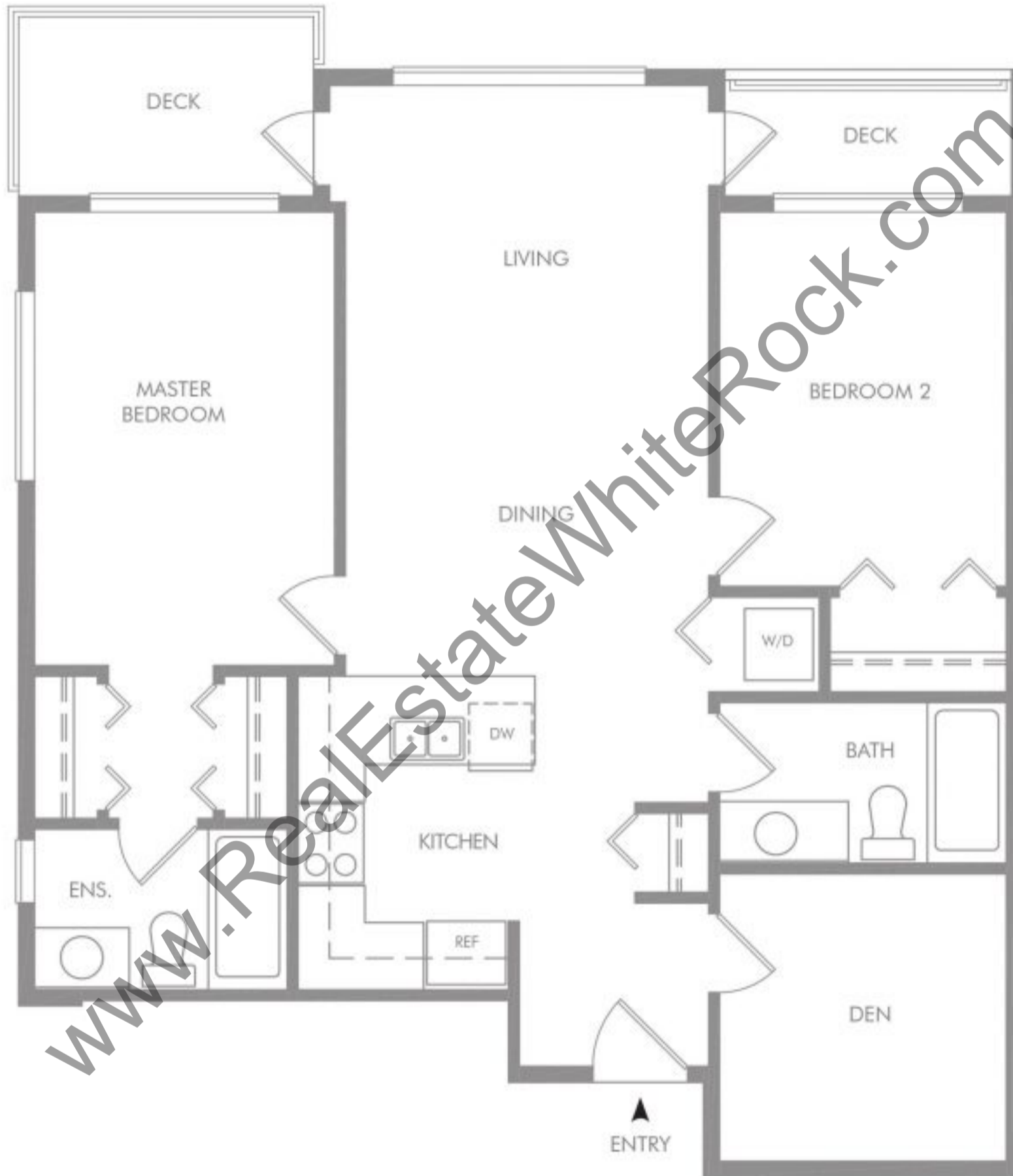
COAST
AT FRASER HEIGHTS



PLAN K1

2 Bedroom + Den
922 S.F.

COAST
AT FRASER HEIGHTS



PLAN K

2 Bedroom + Den
TOTAL 1032 S.F.

COAST
AT FRASER HEIGHTS

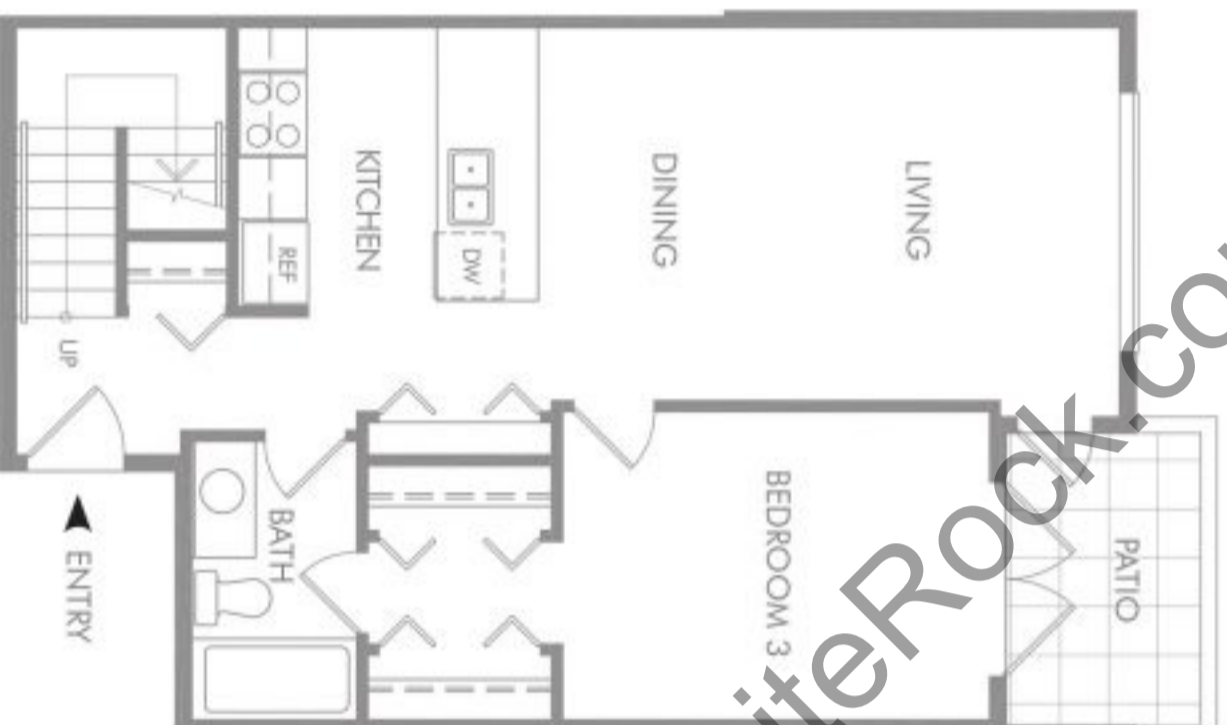


PLAN L

3 Bedroom (Townhouse)
1370 S.F.

COAST

AT FRASER HEIGHTS



MAIN FLOOR
852 SQ.FT.



UPPER FLOOR
685 SQ.FT.

In our continuing effort to improve and maintain the high standard of the Coast at Fraser Heights, the developer reserves the right to modify or change plans, specifications, features and prices without notice. Mistakes may be substituted with equivalent or better at the developer's sole discretion. All dimensions and areas are approximate and are based on architectural measurements. As square meter and square feet of the floor plans occur throughout the development, please see architectural plans if important to you. Renderings are an artist's conception and are intended as a general reference only. Please refer to disclosure statement for specific offering details. E. & O. E.

PLAN L1

3 Bedroom (Townhouse)
1220 S.F.

COAST

AT FRASER HEIGHTS



MAIN FLOOR
610 SQ.FT

UPPER FLOOR
610 SQ.FT

In our continuing effort to improve and maintain the high standard of the Coast at Fraser Heights, the developer reserves the right to modify or change plans, specifications, features and prices without notice. Mistakes may be substituted with equivalent or better at the developer's sole discretion. All dimensions and areas are approximate and are based on architectural measurements. As errors and/or omissions may occur throughout the development, please see architectural plans if important to you. Reservations are an artist's conception and are intended as a general reference only. Please refer to disclosure statement for specific offering details. E. & O. E.

PLAN L2

3 Bedroom + Den (Townhouse)
1556 S.F.

COAST

AT FRASER HEIGHTS



MAIN FLOOR
783 SQ.FT



UPPER FLOOR
783 SQ.FT

In our continuing effort to improve and maintain the high standard of the Coast at Fraser Heights, the developer reserves the right to modify or change plans, specifications, features and prices without notice. Mistakes may be substituted with equivalent or better at the developer's sole discretion. All dimensions and areas are approximate and are based on architectural measurements. As several minor mirrored windows of the floor plans occur throughout the development, please see architectural plans if important to you. Renderings are an artist's conception and are intended as a general reference only. Please refer to disclosure statement for specific offering details. E. & O. E.

PLAN L3

3 Bedroom + Den (Townhouse)
1575 S.F.

COAST

AT FRASER HEIGHTS



MAIN FLOOR
929 SQ.FT



UPPER FLOOR
646 SQ.FT

www.RealEstateWhiteRock.com

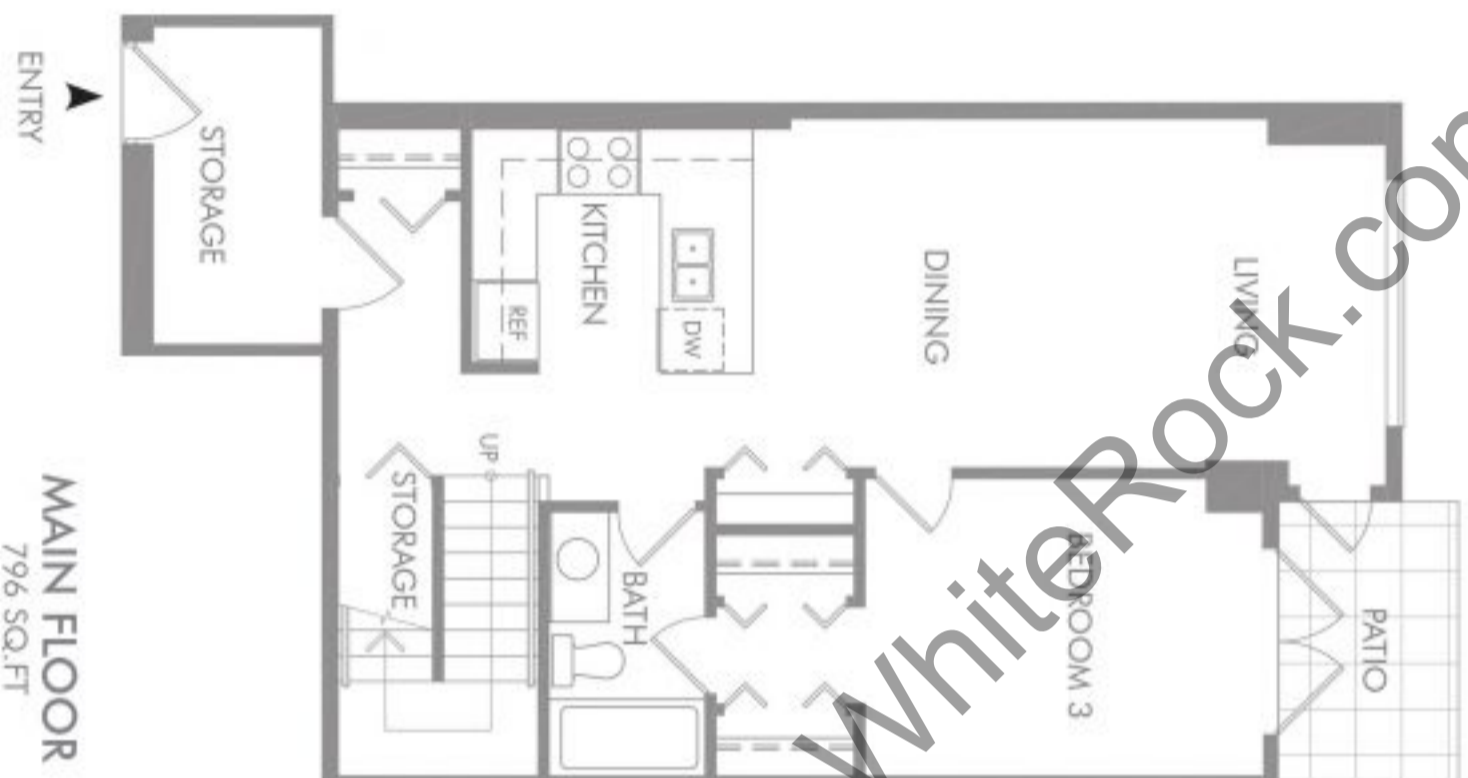
In our continuing effort to improve and maintain the high standard of the Coast at Fraser Heights, the developer reserves the right to modify or change plans, specifications, features and prices without notice. Mistakes may be substituted with equivalent or better at the developer's sole discretion. All dimensions and areas are approximate and are based on architectural measurements. As issues and/or minor changes of the floor plans occur throughout the development, please see architectural plans if important to you. Renderings are an artist's conception and are intended as a general reference only. Please refer to disclosure statement for specific offering details. E. & O. E.

PLAN L4

3 Bedroom + Den (Townhouse)
1524 S.F.

COAST

AT FRASER HEIGHTS



MAIN FLOOR
796 SQ.FT



UPPER FLOOR
728 SQ.FT

www.RealEstateWhiteRock.com

In our continuing effort to improve and maintain the high standard of the Coast at Fraser Heights, the developer reserves the right to modify or change plans, specifications, features and prices without notice. Mistakes may be substituted with equivalent or better at the developer's sole discretion. All dimensions and sizes are approximate and are based on architectural measurements. As square meter marked windows of the floor plans occur throughout the development, please see architectural plans if important to you. Residings are an artist's conception and are intended as a general reference only. Please refer to disclosure statement for specific offering details. E. & O. E.