



STUDIO 1 BATH

INTERIOR: 349-396 SQ. FT.

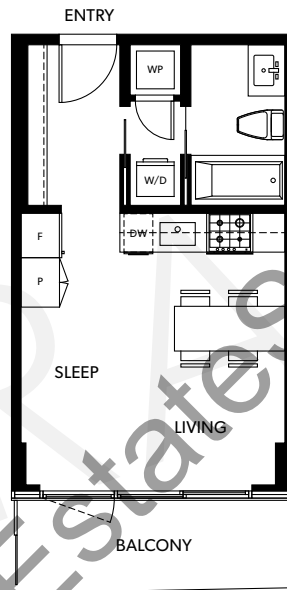
EXTERIOR: 53-87 SQ. FT.

TOTAL: 402-483 SQ. FT.

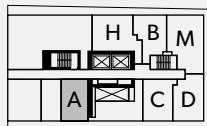
Chic and modern studio home.

Featuring table island.

Perfect for entertaining.



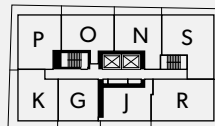
FLOOR 8



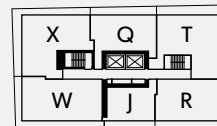
FLOOR 9-12



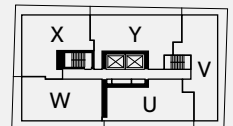
FLOOR 13-20



FLOOR 21-29



FLOOR 30



In our continuing effort to improve and maintain the high standard of The Avani Centre development, the developer reserves the right to modify or change plans, specifications, features and prices without notice. Materials may be substituted with equivalent or better at the developer's sole discretion. All dimensions and sizes are approximate and are based on architectural measurements. As reverse, flipped, and/or mirrored plans occur throughout the development please see architectural plans for specific unit layout if material to your decision to purchase. Illustrations, renderings, images and marketing materials provided are an artist's conception only, intended as a general reference, not to be relied upon as, subject to change without prior notice. Please ask one of the helpful sales staff to reference the architectural set of construction drawings for most up to date dimensions, layouts and other details. Please refer to disclosure statement for specific offering details. E. & O. E



AVANI CENTRE
KING + FRASER

B

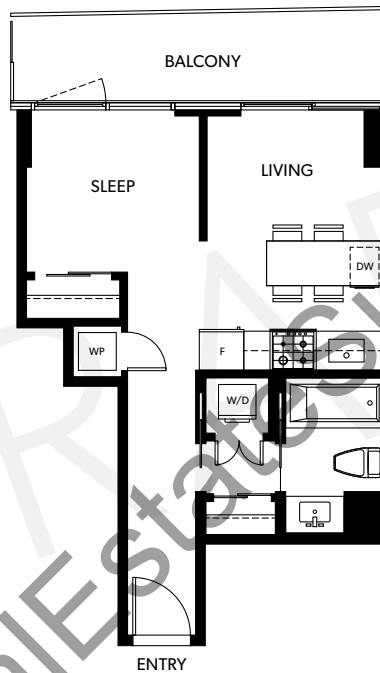
JUNIOR 1 BED, 1 BATH

INTERIOR: 412-413 SQ.FT.

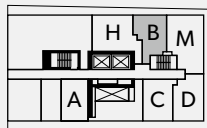
EXTERIOR: 72-98 SQ.FT.

TOTAL: 484-511 SQ.FT.

Bright and open home.
Modern kitchen featuring eating bar.
Separate sleeping and living rooms.



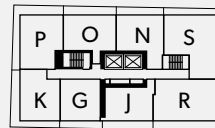
FLOOR 8



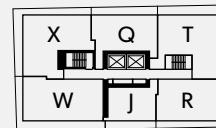
FLOOR 9-12



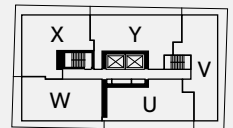
FLOOR 13-20



FLOOR 21-29



FLOOR 30



In our continuing effort to improve and maintain the high standard of The Avani Centre development, the developer reserves the right to modify or change plans, specifications, features and prices without notice. Materials may be substituted with equivalent or better at the developer's sole discretion. All dimensions and sizes are approximate and are based on architectural measurements. As reverse, flipped, and/or mirrored plans occur throughout the development please see architectural plans for specific unit layout if material to your decision to purchase. Illustrations, renderings, images and marketing materials provided are an artist's conception only, intended as a general reference, not to be relied upon as, subject to change without prior notice. Please ask one of the helpful sales staff to reference the architectural set of construction drawings for most up to date dimensions, layouts and other details. E. & O. E



AVANI CENTRE
KING + FRASER



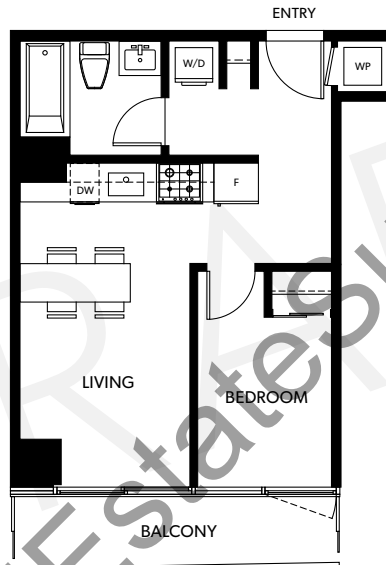
JUNIOR 1 BED, 1 BATH

INTERIOR: 419-422 SQ.FT.

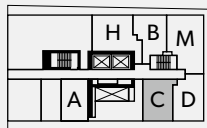
EXTERIOR: 62-89 SQ.FT.

TOTAL: 481-511 SQ.FT.

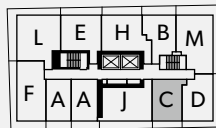
Bright and open home.
Modern kitchen featuring table island.
Perfect for entertaining.



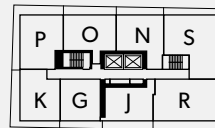
FLOOR 8



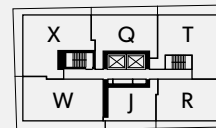
FLOOR 9-12



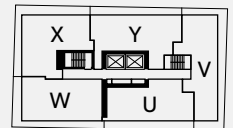
FLOOR 13-20



FLOOR 21-29



FLOOR 30



In our continuing effort to improve and maintain the high standard of The Avani Centre development, the developer reserves the right to modify or change plans, specifications, features and prices without notice. Materials may be substituted with equivalent or better at the developer's sole discretion. All dimensions and sizes are approximate and are based on architectural measurements. As reverse, flipped, and/or mirrored plans occur throughout the development please see architectural plans for specific unit layout if material to your decision to purchase. Illustrations, renderings, images and marketing materials provided are an artist's conception only, intended as a general reference, not to be relied upon as, subject to change without prior notice. Please ask one of the helpful sales staff to reference the architectural set of construction drawings for most up to date dimensions, layouts and other details. E. & O. E



AVANI CENTRE
KING + FRASER

D

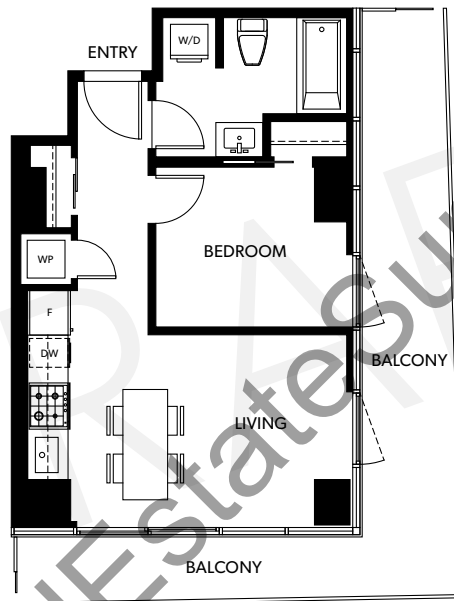
JUNIOR 1 BED, 1 BATH

INTERIOR: 458-459 SQ.FT.

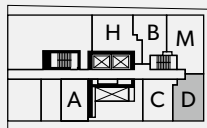
EXTERIOR: 207-213 SQ.FT.

TOTAL: 665-672 SQ.FT.

Bright and open home.
Modern kitchen featuring table island.
Perfect for entertaining.



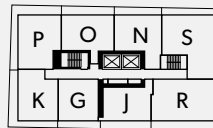
FLOOR 8



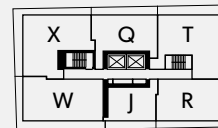
FLOOR 9-12



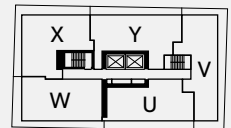
FLOOR 13-20



FLOOR 21-29



FLOOR 30



In our continuing effort to improve and maintain the high standard of The Avani Centre development, the developer reserves the right to modify or change plans, specifications, features and prices without notice. Materials may be substituted with equivalent or better at the developer's sole discretion. All dimensions and sizes are approximate and are based on architectural measurements. As reverse, flipped, and/or mirrored plans occur throughout the development please see architectural plans for specific unit layout if material to your decision to purchase. Illustrations, renderings, images and marketing materials provided are an artist's conception only, intended as a general reference, not to be relied upon as, subject to change without prior notice. Please ask one of the helpful sales staff to reference the architectural set of construction drawings for most up to date dimensions, layouts and other details. E. & O. E



AVANI CENTRE
KING + FRASER



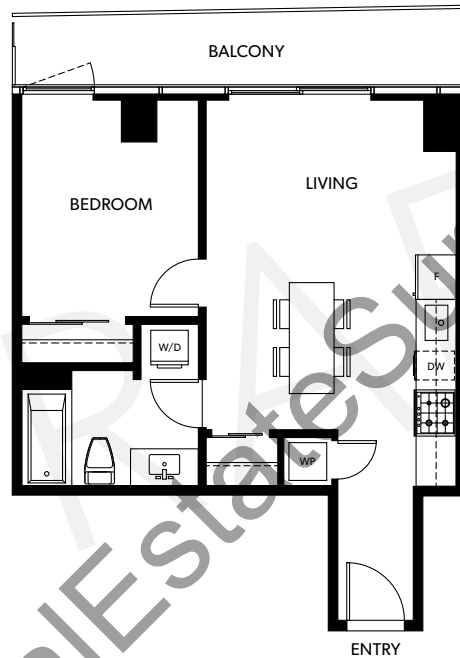
1 BED, 1 BATH

INTERIOR: 561 SQ.FT.

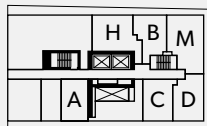
EXTERIOR: 92-108 SQ.FT.

TOTAL: 653-669 SQ.FT.

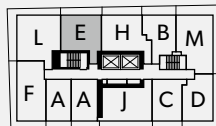
Bright and open home.
Modern kitchen featuring table island.
Perfect for entertaining.



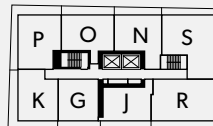
FLOOR 8



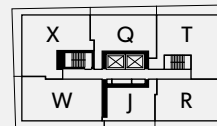
FLOOR 9-12



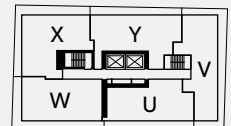
FLOOR 13-20



FLOOR 21-29



FLOOR 30



In our continuing effort to improve and maintain the high standard of The Avani Centre development, the developer reserves the right to modify or change plans, specifications, features and prices without notice. Materials may be substituted with equivalent or better at the developer's sole discretion. All dimensions and sizes are approximate and are based on architectural measurements. As reverse, flipped, and/or mirrored plans occur throughout the development please see architectural plans for specific unit layout if material to your decision to purchase. Illustrations, renderings, images and marketing materials provided are an artist's conception only, intended as a general reference, not to be relied upon as, subject to change without prior notice. Please ask one of the helpful sales staff to reference the architectural set of construction drawings for most up to date dimensions, layouts and other details. Please refer to disclosure statement for specific offering details. E. & O. E



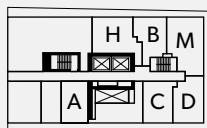
AVANI CENTRE
KING + FRASER

F 1 BED, 1 BATH
 INTERIOR: 574 SQ.FT.
 EXTERIOR: 98-235 SQ.FT.
TOTAL: 672-809 SQ.FT.

w Bright and open plan.
 Featuring modern galley kitchen.
 Perfect for entertaining.



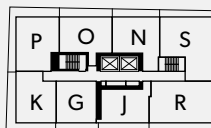
FLOOR 8



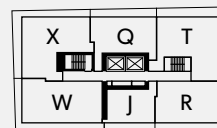
FLOOR 9-12



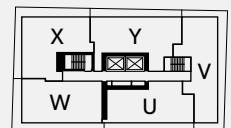
FLOOR 13-20



FLOOR 21-29



FLOOR 30



In our continuing effort to improve and maintain the high standard of The Avani Centre development, the developer reserves the right to modify or change plans, specifications, features and prices without notice. Materials may be substituted with equivalent or better at the developer's sole discretion. All dimensions and sizes are approximate and are based on architectural measurements. As reverse, flipped, and/or mirrored plans occur throughout the development please see architectural plans for specific unit layout if material to your decision to purchase. Illustrations, renderings, images and marketing materials provided are an artist's conception only, intended as a general reference, not to be relied upon as, subject to change without prior notice. Please ask one of the helpful sales staff to reference the architectural set of construction drawings for most up to date dimensions, layouts and other details. E. & O. E



AVANI CENTRE
 KING + FRASER



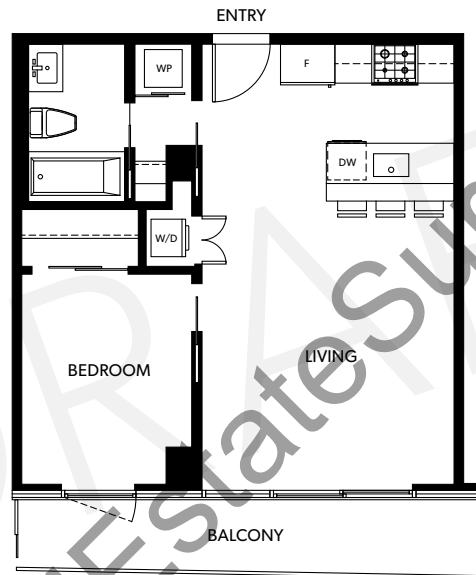
1 BED, 1 BATH

INTERIOR: 586 SQ.FT.

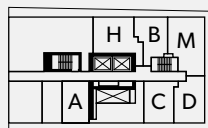
EXTERIOR: 94-114 SQ.FT.

TOTAL: 680-700 SQ.FT.

Bright and open plan.
Featuring modern galley kitchen.
Perfect for entertaining.



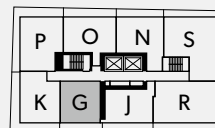
FLOOR 8



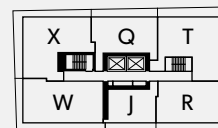
FLOOR 9-12



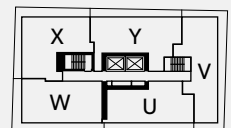
FLOOR 13-20



FLOOR 21-29



FLOOR 30



In our continuing effort to improve and maintain the high standard of The Avani Centre development, the developer reserves the right to modify or change plans, specifications, features and prices without notice. Materials may be substituted with equivalent or better at the developer's sole discretion. All dimensions and sizes are approximate and are based on architectural measurements. As reverse, flipped, and/or mirrored plans occur throughout the development please see architectural plans for specific unit layout if material to your decision to purchase. Illustrations, renderings, images and marketing materials provided are an artist's conception only, intended as a general reference, not to be relied upon as, subject to change without prior notice. Please ask one of the helpful sales staff to reference the architectural set of construction drawings for most up to date dimensions, layouts and other details. E. & O. E



AVANI CENTRE
KING + FRASER



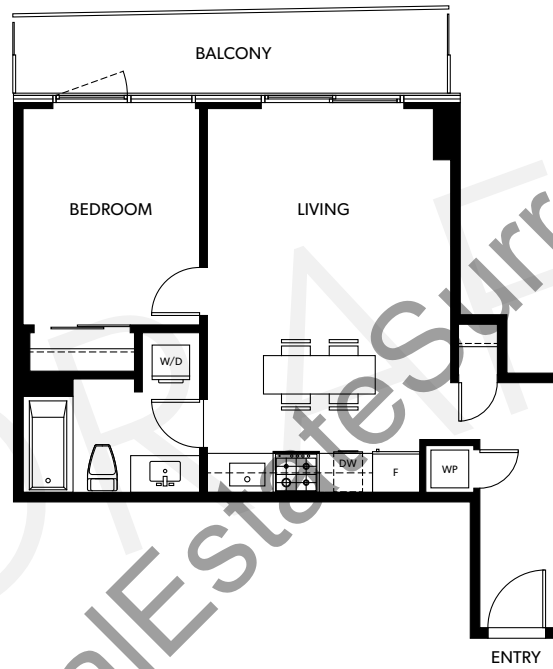
1 BED, 1 BATH

INTERIOR: 584-591 SQ.FT.

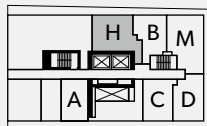
EXTERIOR: 95-98 SQ.FT.

TOTAL: 679-689 SQ.FT.

Bright and open home.
Modern kitchen featuring table island.
Perfect for entertaining.



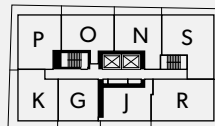
FLOOR 8



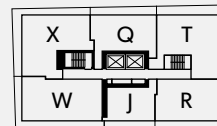
FLOOR 9-12



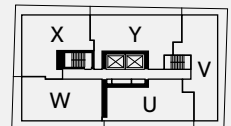
FLOOR 13-20



FLOOR 21-29



FLOOR 30



In our continuing effort to improve and maintain the high standard of The Avani Centre development, the developer reserves the right to modify or change plans, specifications, features and prices without notice. Materials may be substituted with equivalent or better at the developer's sole discretion. All dimensions and sizes are approximate and are based on architectural measurements. As reverse, flipped, and/or mirrored plans occur throughout the development please see architectural plans for specific unit layout if material to your decision to purchase. Illustrations, renderings, images and marketing materials provided are an artist's conception only, intended as a general reference, not to be relied upon as, subject to change without prior notice. Please ask one of the helpful sales staff to reference the architectural set of construction drawings for most up to date dimensions, layouts and other details. Please refer to disclosure statement for specific offering details. E. & O. E



AVANI CENTRE
KING + FRASER

1 BED, 1 BATH

INTERIOR: 619-638 SQ.FT.

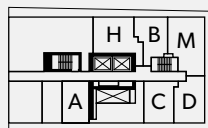
EXTERIOR: 119-131 SQ.FT.

TOTAL: 738-769 SQ.FT.

Bright and open home.
Modern kitchen featuring table island.
Perfect for entertaining.



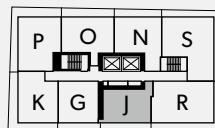
FLOOR 8



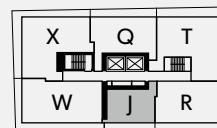
FLOOR 9-12



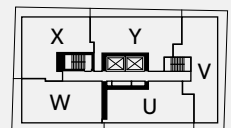
FLOOR 13-20



FLOOR 21-29



FLOOR 30



In our continuing effort to improve and maintain the high standard of The Avani Centre development, the developer reserves the right to modify or change plans, specifications, features and prices without notice. Materials may be substituted with equivalent or better at the developer's sole discretion. All dimensions and sizes are approximate and are based on architectural measurements. As reverse, flipped, and/or mirrored plans occur throughout the development please see architectural plans for specific unit layout if material to your decision to purchase. Illustrations, renderings, images and marketing materials provided are an artist's conception only, intended as a general reference, not to be relied upon as, subject to change without prior notice. Please ask one of the helpful sales staff to reference the architectural set of construction drawings for most up to date dimensions, layouts and other details. Please refer to disclosure statement for specific offering details. E. & O. E



AVANI CENTRE
KING + FRASER



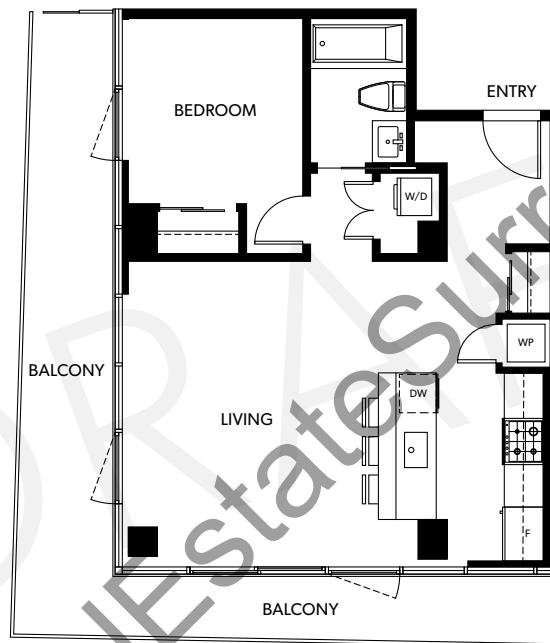
1 BED, 1 BATH

INTERIOR: 636 SQ.FT.

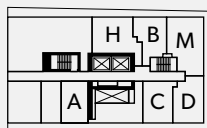
EXTERIOR: 234-242 SQ.FT.

TOTAL: 870-878 SQ.FT.

Bright and open plan.
Featuring modern galley kitchen.
Perfect for entertaining.



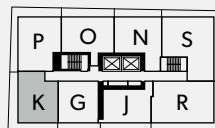
FLOOR 8



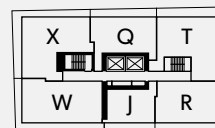
FLOOR 9-12



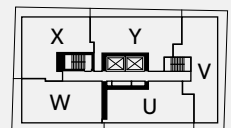
FLOOR 13-20



FLOOR 21-29



FLOOR 30



In our continuing effort to improve and maintain the high standard of The Avani Centre development, the developer reserves the right to modify or change plans, specifications, features and prices without notice. Materials may be substituted with equivalent or better at the developer's sole discretion. All dimensions and sizes are approximate and are based on architectural measurements. As reverse, flipped, and/or mirrored plans occur throughout the development please see architectural plans for specific unit layout if material to your decision to purchase. Illustrations, renderings, images and marketing materials provided are an artist's conception only, intended as a general reference, not to be relied upon as, subject to change without prior notice. Please ask one of the helpful sales staff to reference the architectural set of construction drawings for most up to date dimensions, layouts and other details. E. & O. E



AVANI CENTRE
KING + FRASER

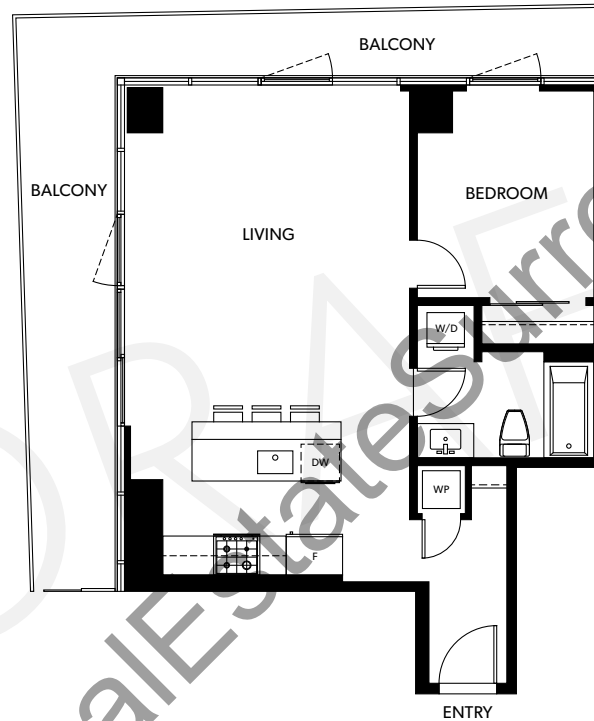
1 BED, 1 BATH

INTERIOR: 670 SQ.FT.

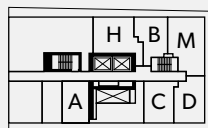
EXTERIOR: 231-241 SQ.FT.

TOTAL: 901-911 SQ.FT.

Bright and open plan.
Featuring modern galley kitchen.
Perfect for entertaining.



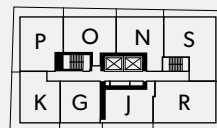
FLOOR 8



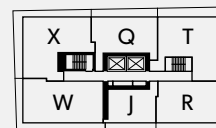
FLOOR 9-12



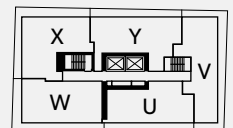
FLOOR 13-20



FLOOR 21-29



FLOOR 30



In our continuing effort to improve and maintain the high standard of The Avani Centre development, the developer reserves the right to modify or change plans, specifications, features and prices without notice. Materials may be substituted with equivalent or better at the developer's sole discretion. All dimensions and sizes are approximate and are based on architectural measurements. As reverse, flipped, and/or mirrored plans occur throughout the development please see architectural plans for specific unit layout if material to your decision to purchase. Illustrations, renderings, images and marketing materials provided are an artist's conception only, intended as a general reference, not to be relied upon as, subject to change without prior notice. Please ask one of the helpful sales staff to reference the architectural set of construction drawings for most up to date dimensions, layouts and other details. Please refer to disclosure statement for specific offering details. E. & O. E



AVANI CENTRE
KING + FRASER



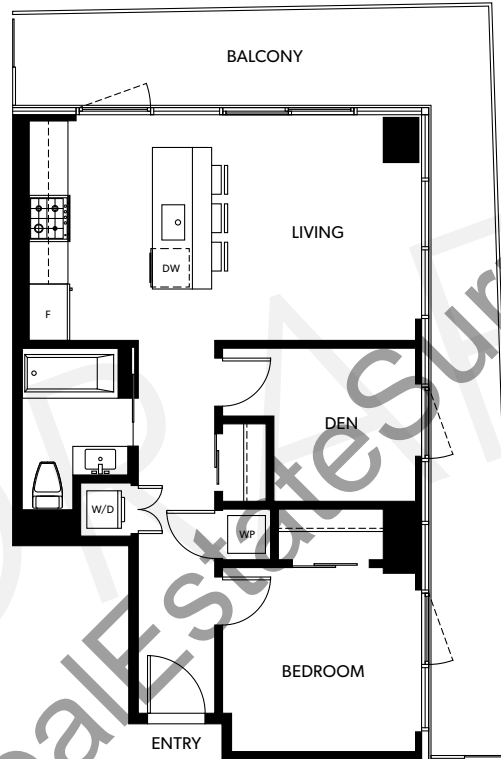
1 BED + DEN, 1 BATH

INTERIOR: 655-656 SQ.FT.

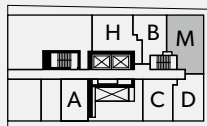
EXTERIOR: 207-255 SQ.FT.

TOTAL: 862-911 SQ.FT.

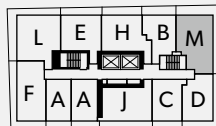
Bright and open plan.
Featuring modern galley kitchen.
Perfect for entertaining.



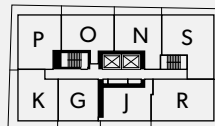
FLOOR 8



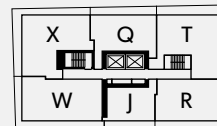
FLOOR 9-12



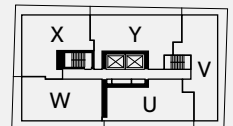
FLOOR 13-20



FLOOR 21-29



FLOOR 30



In our continuing effort to improve and maintain the high standard of The Avani Centre development, the developer reserves the right to modify or change plans, specifications, features and prices without notice. Materials may be substituted with equivalent or better at the developer's sole discretion. All dimensions and sizes are approximate and are based on architectural measurements. As reverse, flipped, and/or mirrored plans occur throughout the development please see architectural plans for specific unit layout if material to your decision to purchase. Illustrations, renderings, images and marketing materials provided are an artist's conception only, intended as a general reference, not to be relied upon as, subject to change without prior notice. Please ask one of the helpful sales staff to reference the architectural set of construction drawings for most up to date dimensions, layouts and other details. Please refer to disclosure statement for specific offering details. E. & O. E



AVANI CENTRE
KING + FRASER

N

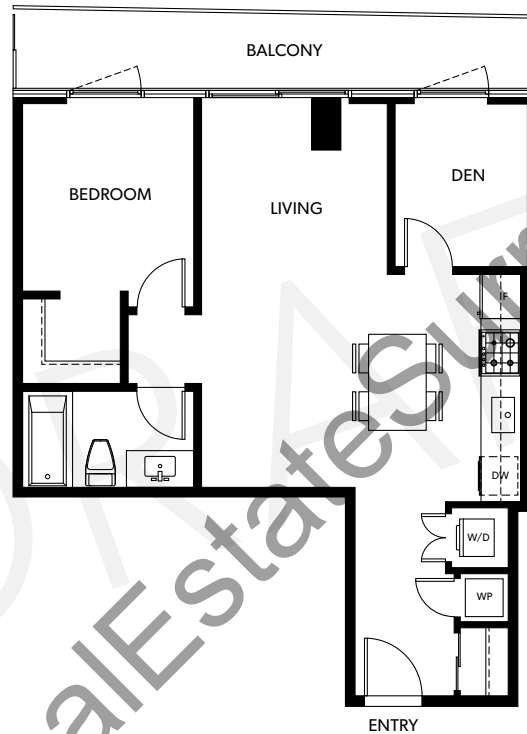
1 BED + DEN, 1 BATH

INTERIOR: 694 SQ.FT.

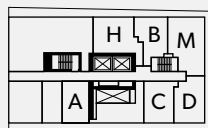
EXTERIOR: 106-120 SQ.FT.

TOTAL: 800-814 SQ.FT.

Bright and open home.
Modern kitchen featuring table island.
Perfect for entertaining.



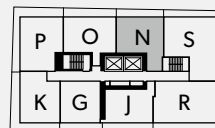
FLOOR 8



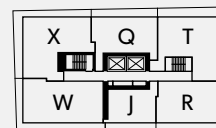
FLOOR 9-12



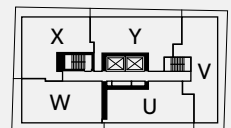
FLOOR 13-20



FLOOR 21-29



FLOOR 30



In our continuing effort to improve and maintain the high standard of The Avani Centre development, the developer reserves the right to modify or change plans, specifications, features and prices without notice. Materials may be substituted with equivalent or better at the developer's sole discretion. All dimensions and sizes are approximate and are based on architectural measurements. As reverse, flipped, and/or mirrored plans occur throughout the development please see architectural plans for specific unit layout if material to your decision to purchase. Illustrations, renderings, images and marketing materials provided are an artist's conception only, intended as a general reference, not to be relied upon as, subject to change without prior notice. Please ask one of the helpful sales staff to reference the architectural set of construction drawings for most up to date dimensions, layouts and other details. Please refer to disclosure statement for specific offering details. E. & O. E



AVANI CENTRE
KING + FRASER



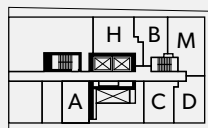
1 BED + DEN, 1 BATH

INTERIOR: 702 SQ.FT.
EXTERIOR: 119-135 SQ.FT.
TOTAL: 821-837 SQ.FT.

Bright and open plan.
Featuring modern galley kitchen.
Perfect for entertaining.



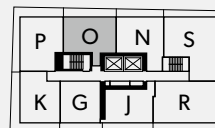
FLOOR 8



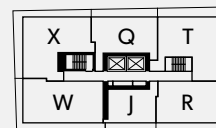
FLOOR 9-12



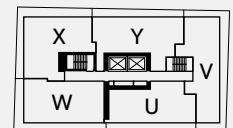
FLOOR 13-20



FLOOR 21-29



FLOOR 30



In our continuing effort to improve and maintain the high standard of The Avani Centre development, the developer reserves the right to modify or change plans, specifications, features and prices without notice. Materials may be substituted with equivalent or better at the developer's sole discretion. All dimensions and sizes are approximate and are based on architectural measurements. As reverse, flipped, and/or mirrored plans occur throughout the development please see architectural plans for specific unit layout if material to your decision to purchase. Illustrations, renderings, images and marketing materials provided are an artist's conception only, intended as a general reference, not to be relied upon as, subject to change without prior notice. Please ask one of the helpful sales staff to reference the architectural set of construction drawings for most up to date dimensions, layouts and other details. Please refer to disclosure statement for specific offering details. E. & O. E



AVANI CENTRE
KING + FRASER

P

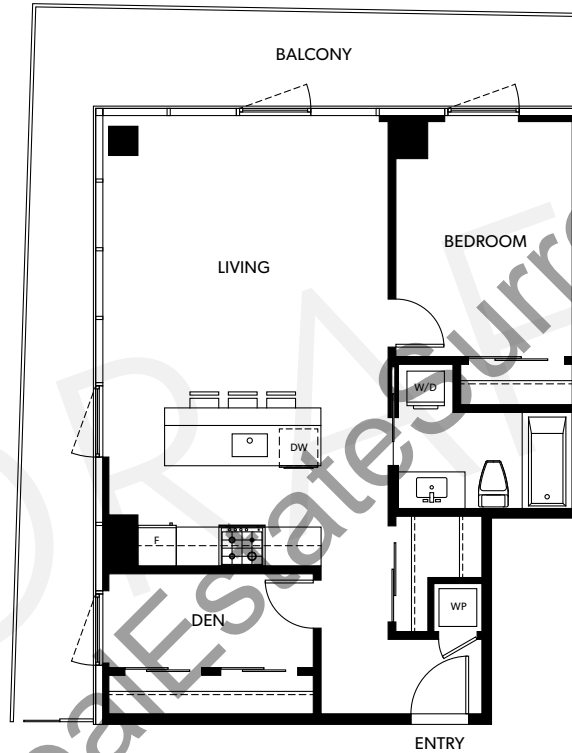
1 BED + DEN, 1 BATH

INTERIOR: 753 SQ.FT.

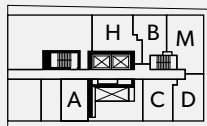
EXTERIOR: 253-263 SQ.FT.

TOTAL: 1,006-1,016 SQ.FT.

Bright and open plan.
Featuring modern galley kitchen.
Perfect for entertaining.



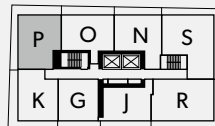
FLOOR 8



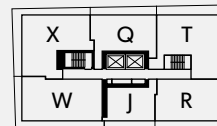
FLOOR 9-12



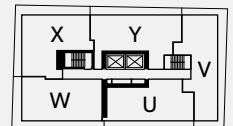
FLOOR 13-20



FLOOR 21-29



FLOOR 30



In our continuing effort to improve and maintain the high standard of The Avani Centre development, the developer reserves the right to modify or change plans, specifications, features and prices without notice. Materials may be substituted with equivalent or better at the developer's sole discretion. All dimensions and sizes are approximate and are based on architectural measurements. As reverse, flipped, and/or mirrored plans occur throughout the development please see architectural plans for specific unit layout if material to your decision to purchase. Illustrations, renderings, images and marketing materials provided are an artist's conception only, intended as a general reference, not to be relied upon as, subject to change without prior notice. Please ask one of the helpful sales staff to reference the architectural set of construction drawings for most up to date dimensions, layouts and other details. Please refer to disclosure statement for specific offering details. E. & O. E



AVANI CENTRE
KING + FRASER



1 BED + DEN, 2 BATH

INTERIOR: 894 SQ.FT.

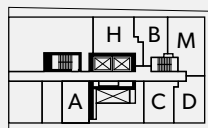
EXTERIOR: 22-162 SQ.FT.

TOTAL: 916-1,056 SQ.FT.

Bright and open plan.
Featuring modern galley kitchen.
Perfect for entertaining.



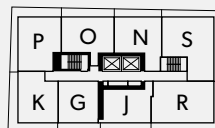
FLOOR 8



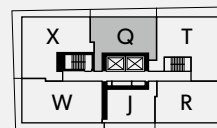
FLOOR 9-12



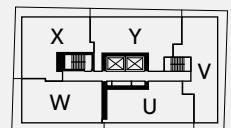
FLOOR 13-20



FLOOR 21-29



FLOOR 30



In our continuing effort to improve and maintain the high standard of The Avani Centre development, the developer reserves the right to modify or change plans, specifications, features and prices without notice. Materials may be substituted with equivalent or better at the developer's sole discretion. All dimensions and sizes are approximate and are based on architectural measurements. As reverse, flipped, and/or mirrored plans occur throughout the development please see architectural plans for specific unit layout if material to your decision to purchase. Illustrations, renderings, images and marketing materials provided are an artist's conception only, intended as a general reference, not to be relied upon as, subject to change without prior notice. Please ask one of the helpful sales staff to reference the architectural set of construction drawings for most up to date dimensions, layouts and other details. E. & O. E



AVANI CENTRE
KING + FRASER

R

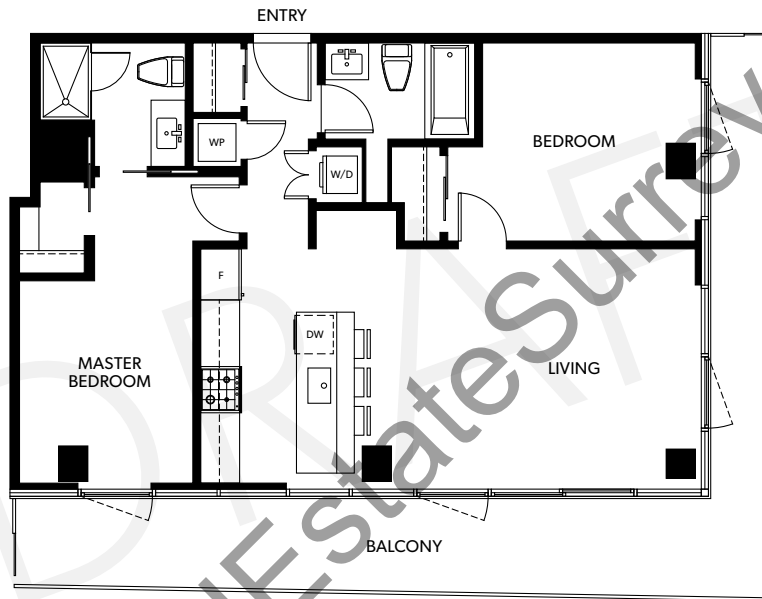
2 BED, 2 BATH

INTERIOR: 863 SQ.FT.

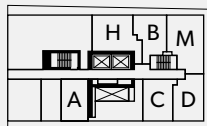
EXTERIOR: 260-282 SQ.FT.

TOTAL: 1,123-1,145 SQ.FT.

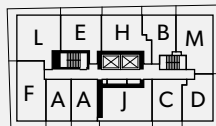
Bright and open plan. Featuring modern galley kitchen.
Perfect for entertaining. Bedrooms separated by living area.
Master features full walk-in closet, with 5' shower in ensuite.



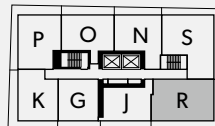
FLOOR 8



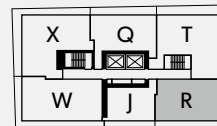
FLOOR 9-12



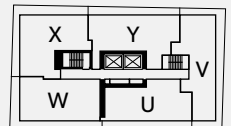
FLOOR 13-20



FLOOR 21-29



FLOOR 30



In our continuing effort to improve and maintain the high standard of The Avani Centre development, the developer reserves the right to modify or change plans, specifications, features and prices without notice. Materials may be substituted with equivalent or better at the developer's sole discretion. All dimensions and sizes are approximate and are based on architectural measurements. As reverse, flipped, and/or mirrored plans occur throughout the development please see architectural plans for specific unit layout if material to your decision to purchase. Illustrations, renderings, images and marketing materials provided are an artist's conception only, intended as a general reference, not to be relied upon as, subject to change without prior notice. Please ask one of the helpful sales staff to reference the architectural set of construction drawings for most up to date dimensions, layouts and other details. E. & O. E



AVANI CENTRE
KING + FRASER

S

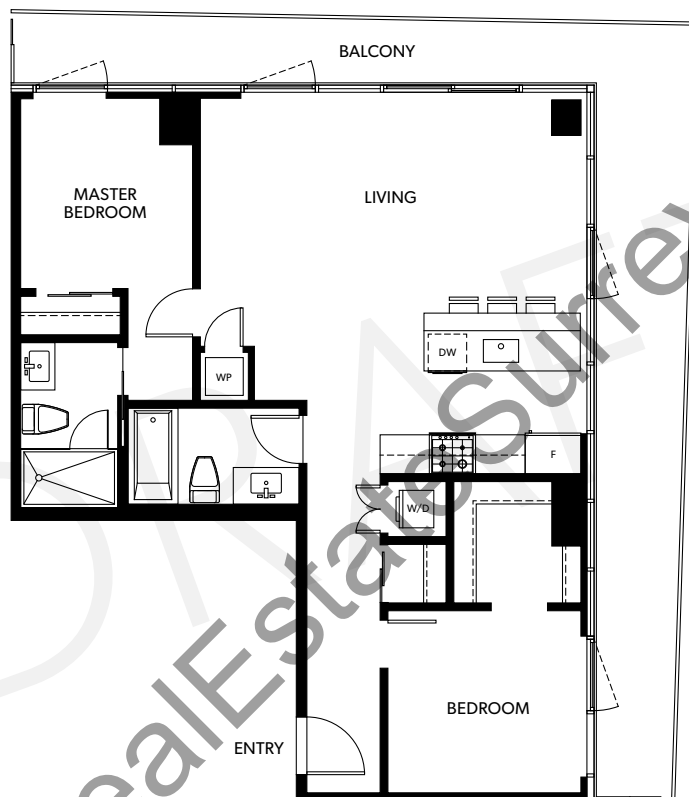
2 BED, 2 BATH

INTERIOR: 914 SQ.FT.

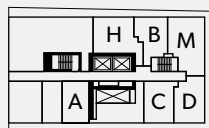
EXTERIOR: 289-311 SQ.FT.

TOTAL: 1,203-1,225 SQ.FT.

Bright and open plan. Featuring modern galley kitchen.
Perfect for entertaining. Bedrooms separated by living area.
Master ensuite features full 5' shower.



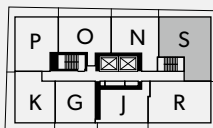
FLOOR 8



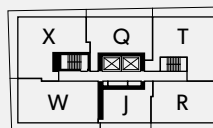
FLOOR 9-12



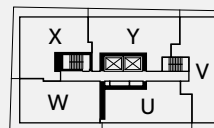
FLOOR 13-20



FLOOR 21-29



FLOOR 30



In our continuing effort to improve and maintain the high standard of The Avani Centre development, the developer reserves the right to modify or change plans, specifications, features and prices without notice. Materials may be substituted with equivalent or better at the developer's sole discretion. All dimensions and sizes are approximate and are based on architectural measurements. As reverse, flipped, and/or mirrored plans occur throughout the development please see architectural plans for specific unit layout if material to your decision to purchase. Illustrations, renderings, images and marketing materials provided are an artist's conception only, intended as a general reference, not to be relied upon as, subject to change without prior notice. Please ask one of the helpful sales staff to reference the architectural set of construction drawings for most up to date dimensions, layouts and other details. Please refer to disclosure statement for specific offering details. E. & O. E



AVANI CENTRE
KING + FRASER

T

2 BED + DEN, 2 BATH

INTERIOR: 1,111 SQ.FT.

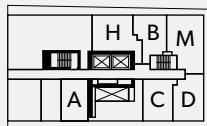
EXTERIOR: 315-335 SQ.FT.

TOTAL: 1,426-1,446 SQ.FT.

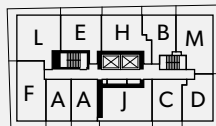
Bright and open plan. Featuring modern galley kitchen.
Perfect for entertaining. Bedrooms separated by living area.
Master features full walk-in closet, with 5' shower in ensuite.



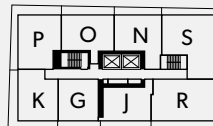
FLOOR 8



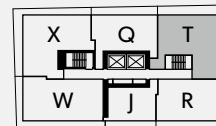
FLOOR 9-12



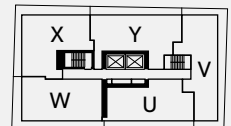
FLOOR 13-20



FLOOR 21-29



FLOOR 30



In our continuing effort to improve and maintain the high standard of The Avani Centre development, the developer reserves the right to modify or change plans, specifications, features and prices without notice. Materials may be substituted with equivalent or better at the developer's sole discretion. All dimensions and sizes are approximate and are based on architectural measurements. As reverse, flipped, and/or mirrored plans occur throughout the development please see architectural plans for specific unit layout if material to your decision to purchase. Illustrations, renderings, images and marketing materials provided are an artist's conception only, intended as a general reference, not to be relied upon as, subject to change without prior notice. Please ask one of the helpful sales staff to reference the architectural set of construction drawings for most up to date dimensions, layouts and other details. Please refer to disclosure statement for specific offering details. E. & O. E.



AVANI CENTRE
KING + FRASER



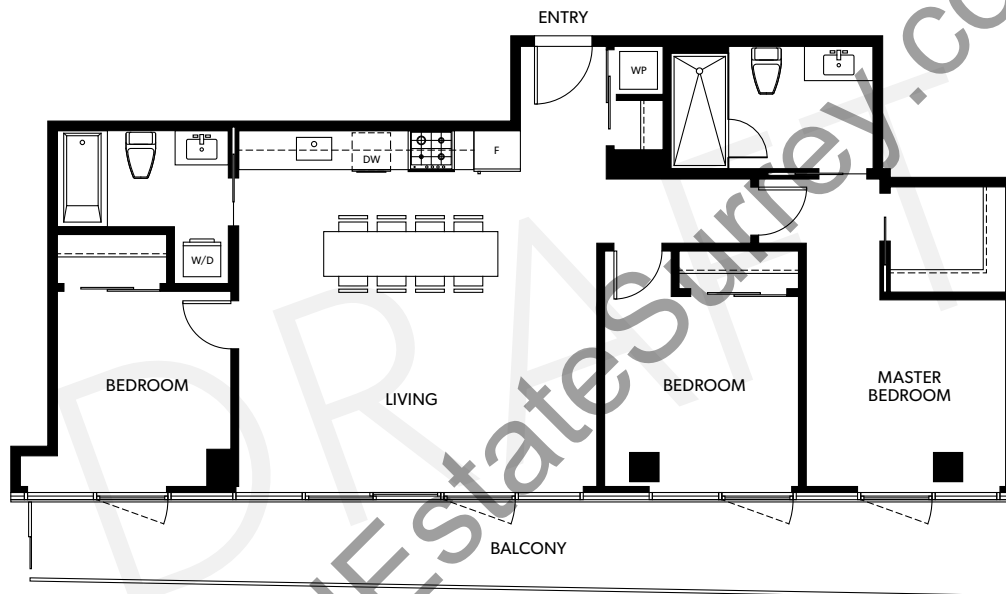
3 BED, 2 BATH

INTERIOR: 1,092 SQ.FT.

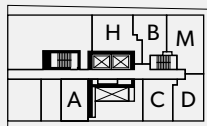
EXTERIOR: 237 SQ.FT.

TOTAL: 1,329 SQ.FT.

Bright and open plan featuring modern kitchen with luxury table island seating up to 8. Master bedroom features full walk-in closet and 5' shower in ensuite.



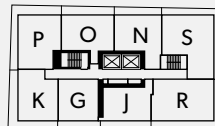
FLOOR 8



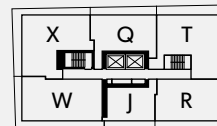
FLOOR 9-12



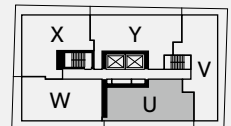
FLOOR 13-20



FLOOR 21-29



FLOOR 30



In our continuing effort to improve and maintain the high standard of The Avani Centre development, the developer reserves the right to modify or change plans, specifications, features and prices without notice. Materials may be substituted with equivalent or better at the developer's sole discretion. All dimensions and sizes are approximate and are based on architectural measurements. As reverse, flipped, and/or mirrored plans occur throughout the development please see architectural plans for specific unit layout if material to your decision to purchase. Illustrations, renderings, images and marketing materials provided are an artist's conception only, intended as a general reference, not to be relied upon as, subject to change without prior notice. Please ask one of the helpful sales staff to reference the architectural set of construction drawings for most up to date dimensions, layouts and other details. E. & O. E.



AVANI CENTRE
KING + FRASER

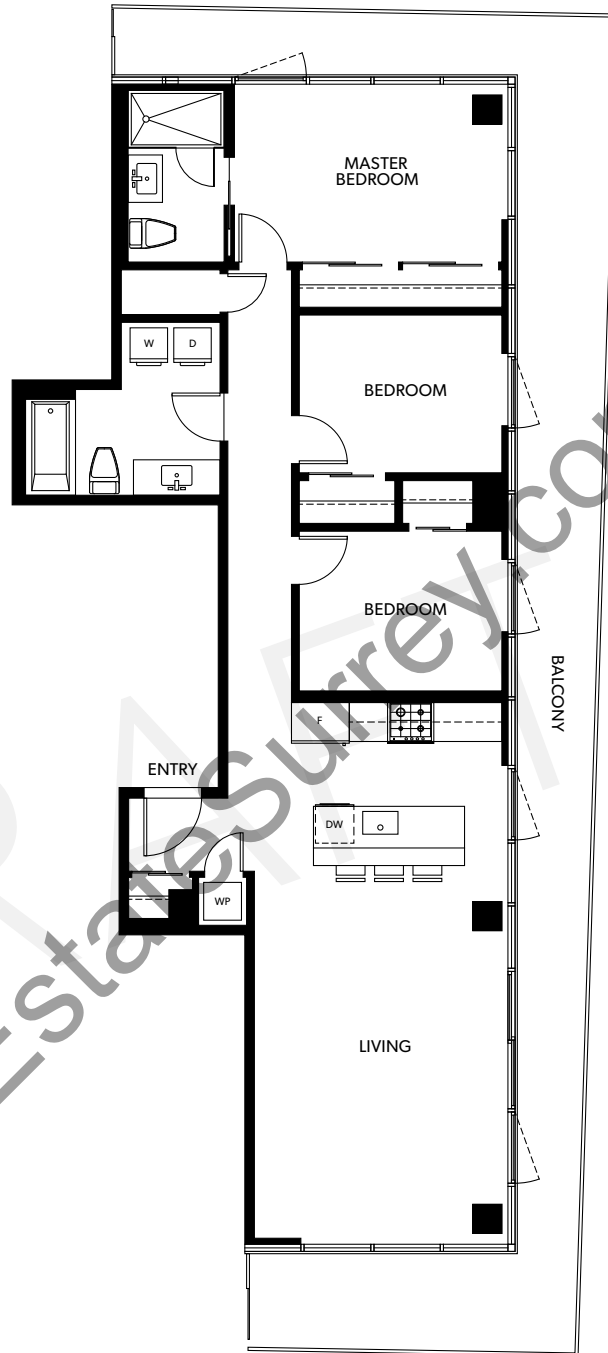


3 BED, 2 BATH

INTERIOR: 1,116 SQ.FT.

EXTERIOR: 436 SQ.FT.

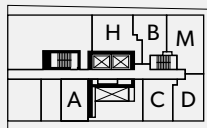
TOTAL: 1,552 SQ.FT.



Bright and open plan featuring modern galley kitchen.
Master ensuite features full 5' shower.



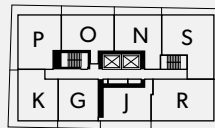
FLOOR 8



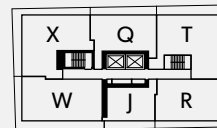
FLOOR 9-12



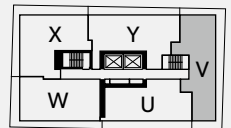
FLOOR 13-20



FLOOR 21-29



FLOOR 30



In our continuing effort to improve and maintain the high standard of The Avani Centre development, the developer reserves the right to modify or change plans, specifications, features and prices without notice. Materials may be substituted with equivalent or better at the developer's sole discretion. All dimensions and sizes are approximate and are based on architectural measurements. As reverse, flipped, and/or mirrored plans occur throughout the development please see architectural plans for specific unit layout if material to your decision to purchase. Illustrations, renderings, images and marketing materials provided are an artist's conception only, intended as a general reference, not to be relied upon as, subject to change without prior notice. Please ask one of the helpful sales staff to reference the architectural set of construction drawings for most up to date dimensions, layouts and other details. E. & O. E



AVANI CENTRE
KING + FRASER



3 BED, 2 BATH

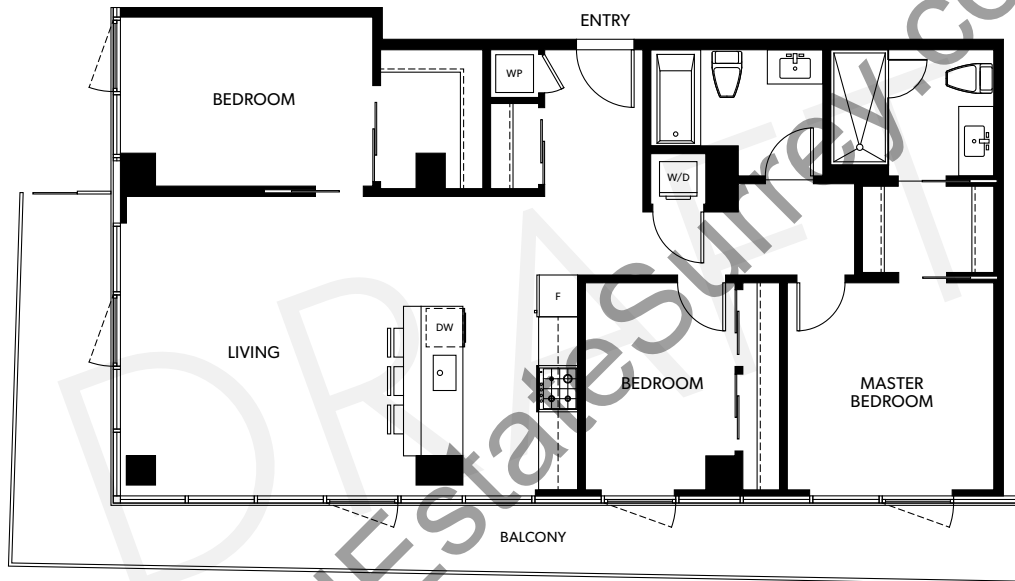
INTERIOR: 1,159-1,161 SQ.FT.

EXTERIOR: 311-339 SQ.FT.

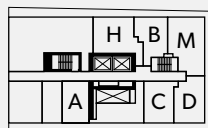
TOTAL: 1,470-1,500 SQ.FT.

Bright and open plan featuring modern galley kitchen.

Master ensuite features full 5' shower.



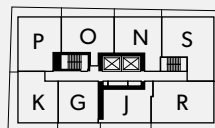
FLOOR 8



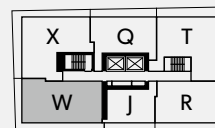
FLOOR 9-12



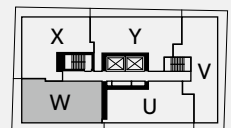
FLOOR 13-20



FLOOR 21-29



FLOOR 30



In our continuing effort to improve and maintain the high standard of The Avani Centre development, the developer reserves the right to modify or change plans, specifications, features and prices without notice. Materials may be substituted with equivalent or better at the developer's sole discretion. All dimensions and sizes are approximate and are based on architectural measurements. As reverse, flipped, and/or mirrored plans occur throughout the development please see architectural plans for specific unit layout if material to your decision to purchase. Illustrations, renderings, images and marketing materials provided are an artist's conception only, intended as a general reference, not to be relied upon as, subject to change without prior notice. Please ask one of the helpful sales staff to reference the architectural set of construction drawings for most up to date dimensions, layouts and other details. Please refer to disclosure statement for specific offering details. E. & O. E

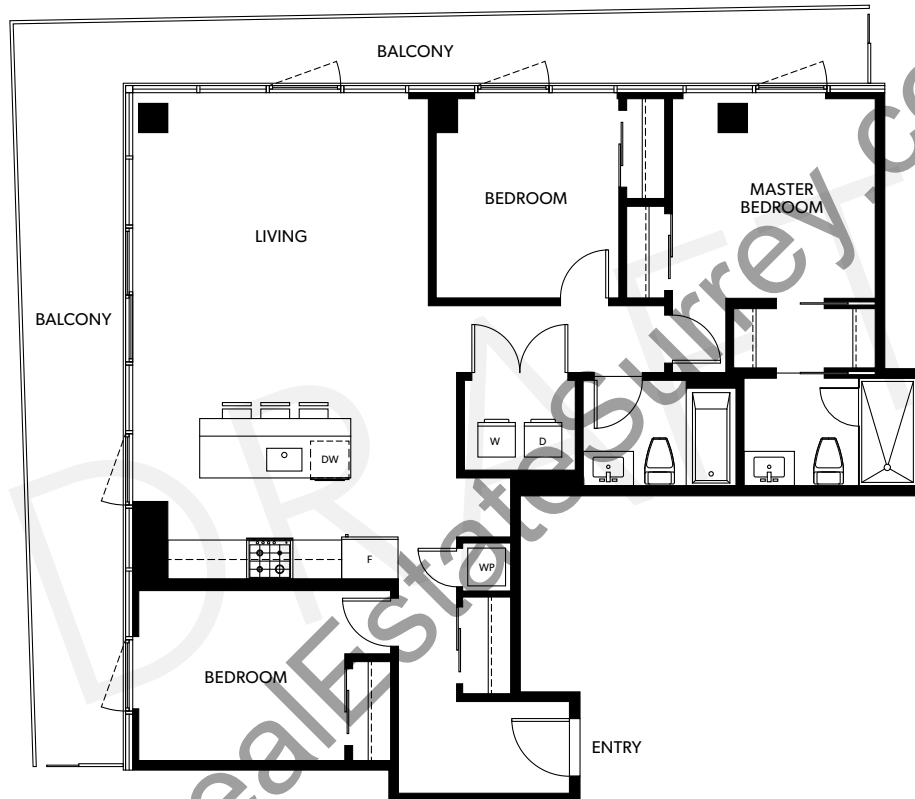


AVANI CENTRE
KING + FRASER

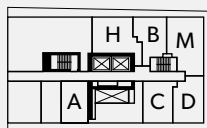


3 BED, 2 BATH
INTERIOR: 1,182 SQ. FT.
EXTERIOR: 322-345 SQ. FT.
TOTAL: 1,504-1,527 SQ. FT.

Bright and open plan featuring modern galley kitchen.
Master ensuite features full 5' shower.



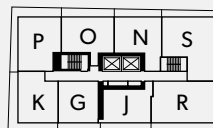
FLOOR 8



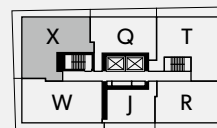
FLOOR 9-12



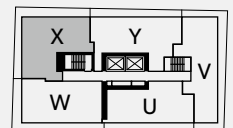
FLOOR 13-20



FLOOR 21-29



FLOOR 30



In our continuing effort to improve and maintain the high standard of The Avani Centre development, the developer reserves the right to modify or change plans, specifications, features and prices without notice. Materials may be substituted with equivalent or better at the developer's sole discretion. All dimensions and sizes are approximate and are based on architectural measurements. As reverse, flipped, and/or mirrored plans occur throughout the development please see architectural plans for specific unit layout if material to your decision to purchase. Illustrations, renderings, images and marketing materials provided are an artist's conception only, intended as a general reference, not to be relied upon as, subject to change without prior notice. Please ask one of the helpful sales staff to reference the architectural set of construction drawings for most up to date dimensions, layouts and other details. Please refer to disclosure statement for specific offering details. E. & O. E



AVANI CENTRE
KING + FRASER



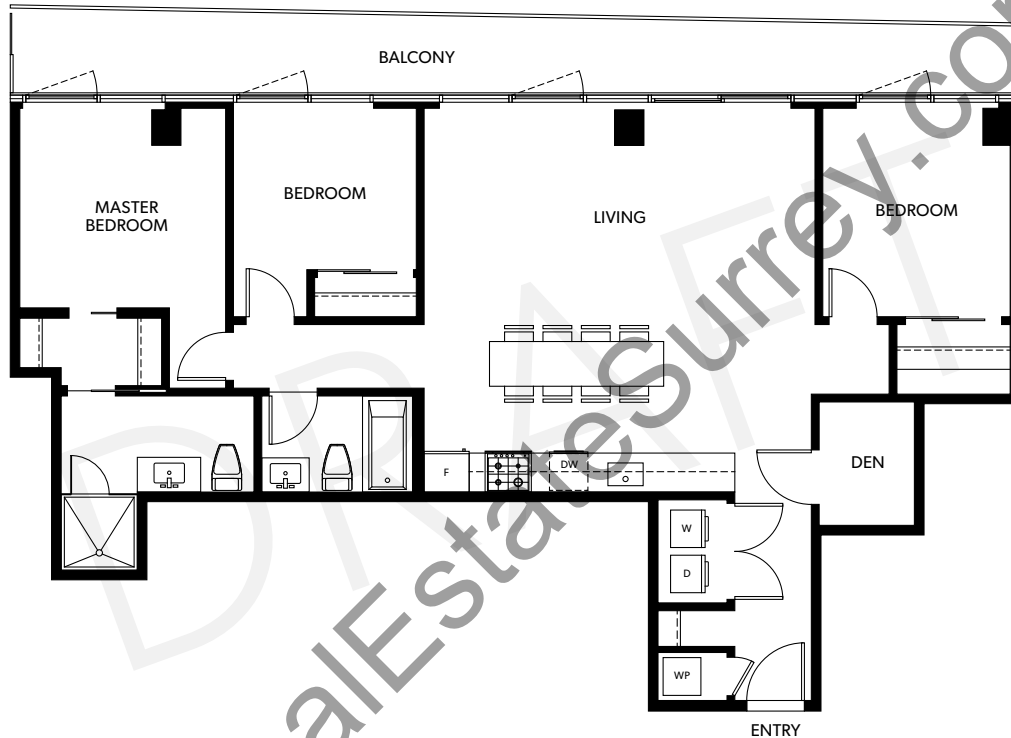
3 BED + DEN, 2 BATH

INTERIOR: 1,232 SQ. FT.

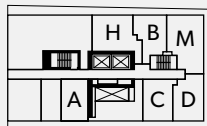
EXTERIOR: 214 SQ. FT.

TOTAL: 1,446 SQ. FT.

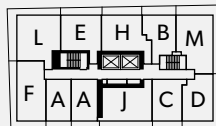
Bright and open plan featuring modern kitchen with luxury table island seating up to 8. Master bedroom features full walk-in closet and 5' shower in ensuite.



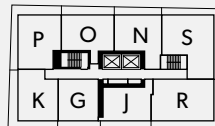
FLOOR 8



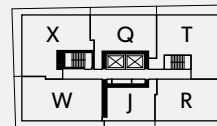
FLOOR 9-12



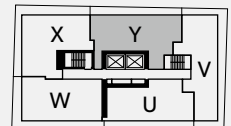
FLOOR 13-20



FLOOR 21-29



FLOOR 30



In our continuing effort to improve and maintain the high standard of The Avani Centre development, the developer reserves the right to modify or change plans, specifications, features and prices without notice. Materials may be substituted with equivalent or better at the developer's sole discretion. All dimensions and sizes are approximate and are based on architectural measurements. As reverse, flipped, and/or mirrored plans occur throughout the development please see architectural plans for specific unit layout if material to your decision to purchase. Illustrations, renderings, images and marketing materials provided are an artist's conception only, intended as a general reference, not to be relied upon as, subject to change without prior notice. Please ask one of the helpful sales staff to reference the architectural set of construction drawings for most up to date dimensions, layouts and other details. E. & O. E.



AVANI CENTRE
KING + FRASER

CITY HOME A

2 BED + DEN, 2.5 BATH

INTERIOR: 1,360 SQ. FT.

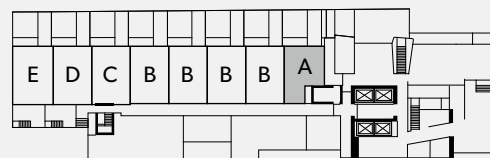
EXTERIOR: 81 SQ. FT.

TOTAL: 1,441 SQ. FT.

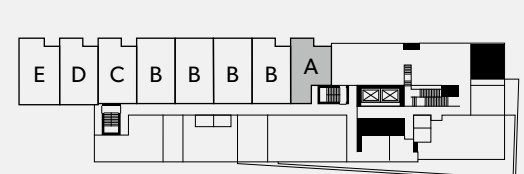
Bright and open 2 level home
featuring modern galley kitchen.
Master ensuite features full 5' shower.



FLOOR 1



FLOOR 2



In our continuing effort to improve and maintain the high standard of The Avani Centre development, the developer reserves the right to modify or change plans, specifications, features and prices without notice. Materials may be substituted with equivalent or better at the developer's sole discretion. All dimensions and sizes are approximate and are based on architectural measurements. As reverse, flipped, and/or mirrored plans occur throughout the development please see architectural plans for specific unit layout if material to your decision to purchase. Illustrations, renderings, images and marketing materials provided are an artist's conception only, intended as a general reference, not to be relied upon as, subject to change without prior notice. Please ask one of the helpful sales staff to reference the architectural set of construction drawings for most up to date dimensions, layouts and other details. E. & O. E.



AVANI CENTRE
KING + FRASER

CITY HOME

B

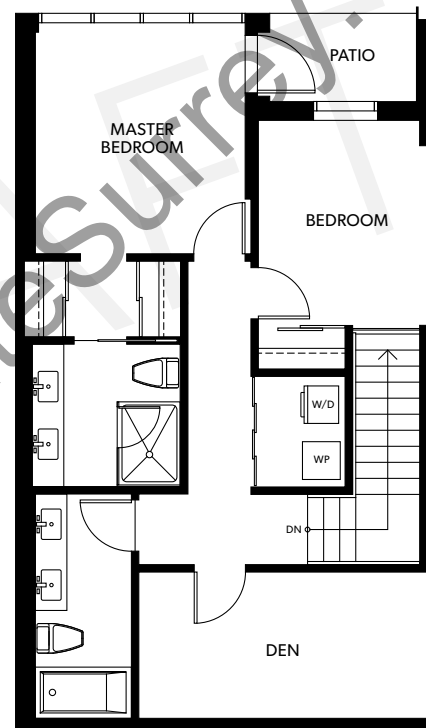
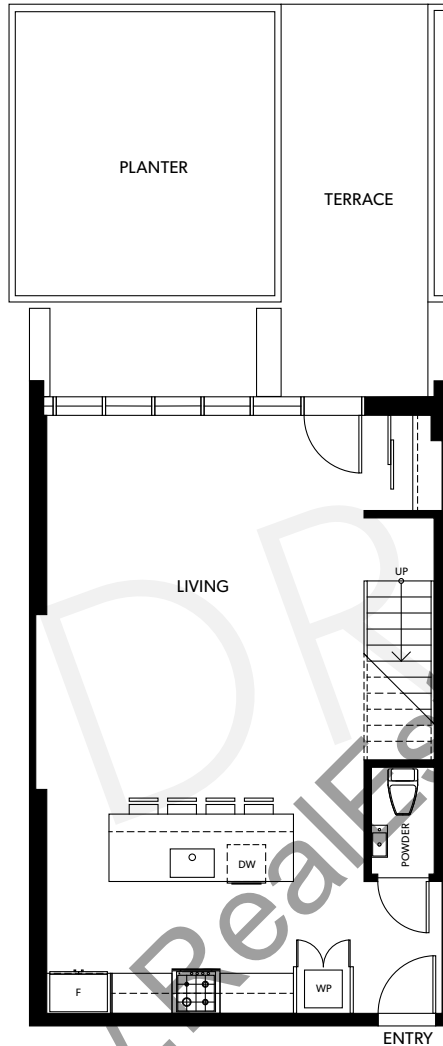
2 BED + DEN, 2.5 BATH

INTERIOR: 1,494 SQ. FT.

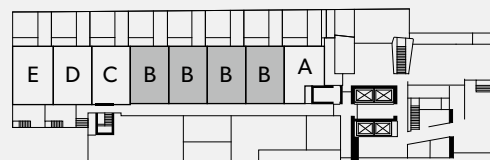
EXTERIOR: 81 SQ. FT.

TOTAL: 1,575 SQ. FT.

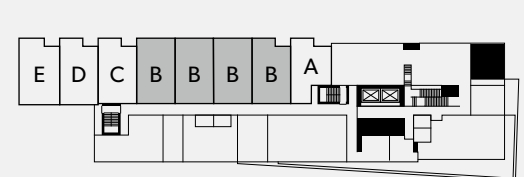
Bright and open 2 level home featuring modern galley kitchen. Master ensuite features full 5' shower.



FLOOR 1



FLOOR 2



In our continuing effort to improve and maintain the high standard of The Avani Centre development, the developer reserves the right to modify or change plans, specifications, features and prices without notice. Materials may be substituted with equivalent or better at the developer's sole discretion. All dimensions and sizes are approximate and are based on architectural measurements. As reverse, flipped, and/or mirrored plans occur throughout the development please see architectural plans for specific unit layout if material to your decision to purchase. Illustrations, renderings, images and marketing materials provided are an artist's conception only, intended as a general reference, not to be relied upon as, subject to change without prior notice. Please ask one of the helpful sales staff to reference the architectural set of construction drawings for most up to date dimensions, layouts and other details. E. & O. E



AVANI CENTRE
KING + FRASER

CITY HOME



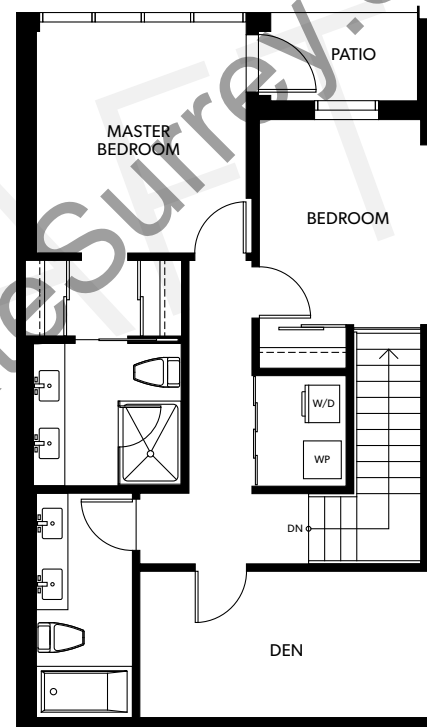
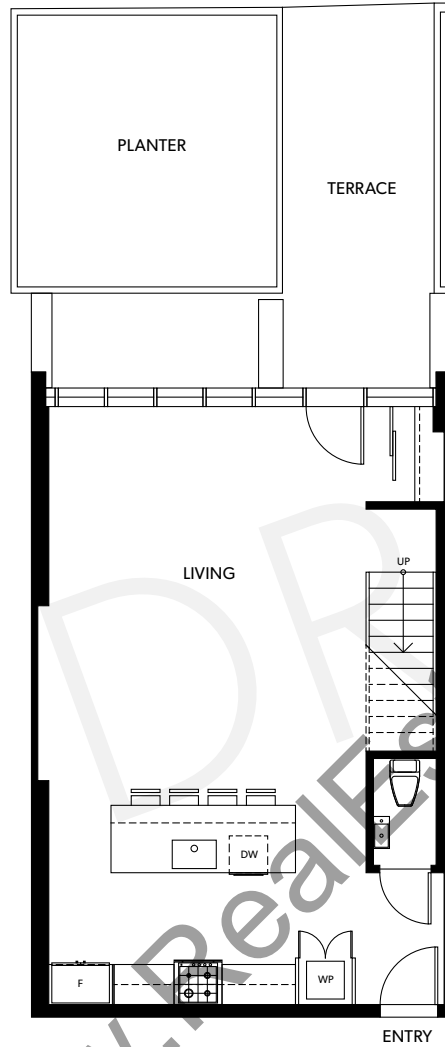
2 BED + DEN, 2.5 BATH

INTERIOR: 1,494 SQ. FT.

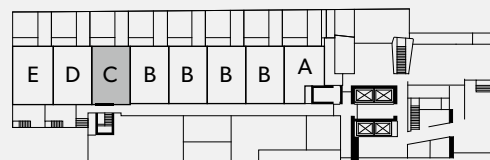
EXTERIOR: 81 SQ. FT.

TOTAL: 1,575 SQ. FT.

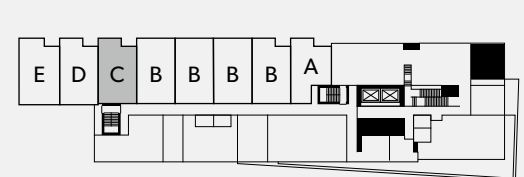
Bright and open 2 level home
featuring modern galley kitchen.
Master ensuite features full 5' shower.



FLOOR 1



FLOOR 2



In our continuing effort to improve and maintain the high standard of The Avani Centre development, the developer reserves the right to modify or change plans, specifications, features and prices without notice. Materials may be substituted with equivalent or better at the developer's sole discretion. All dimensions and sizes are approximate and are based on architectural measurements. As reverse, flipped, and/or mirrored plans occur throughout the development please see architectural plans for specific unit layout if material to your decision to purchase. Illustrations, renderings, images and marketing materials provided are an artist's conception only, intended as a general reference, not to be relied upon as, subject to change without prior notice. Please ask one of the helpful sales staff to reference the architectural set of construction drawings for most up to date dimensions, layouts and other details. E. & O. E



AVANI CENTRE
KING + FRASER

CITY
HOME

D

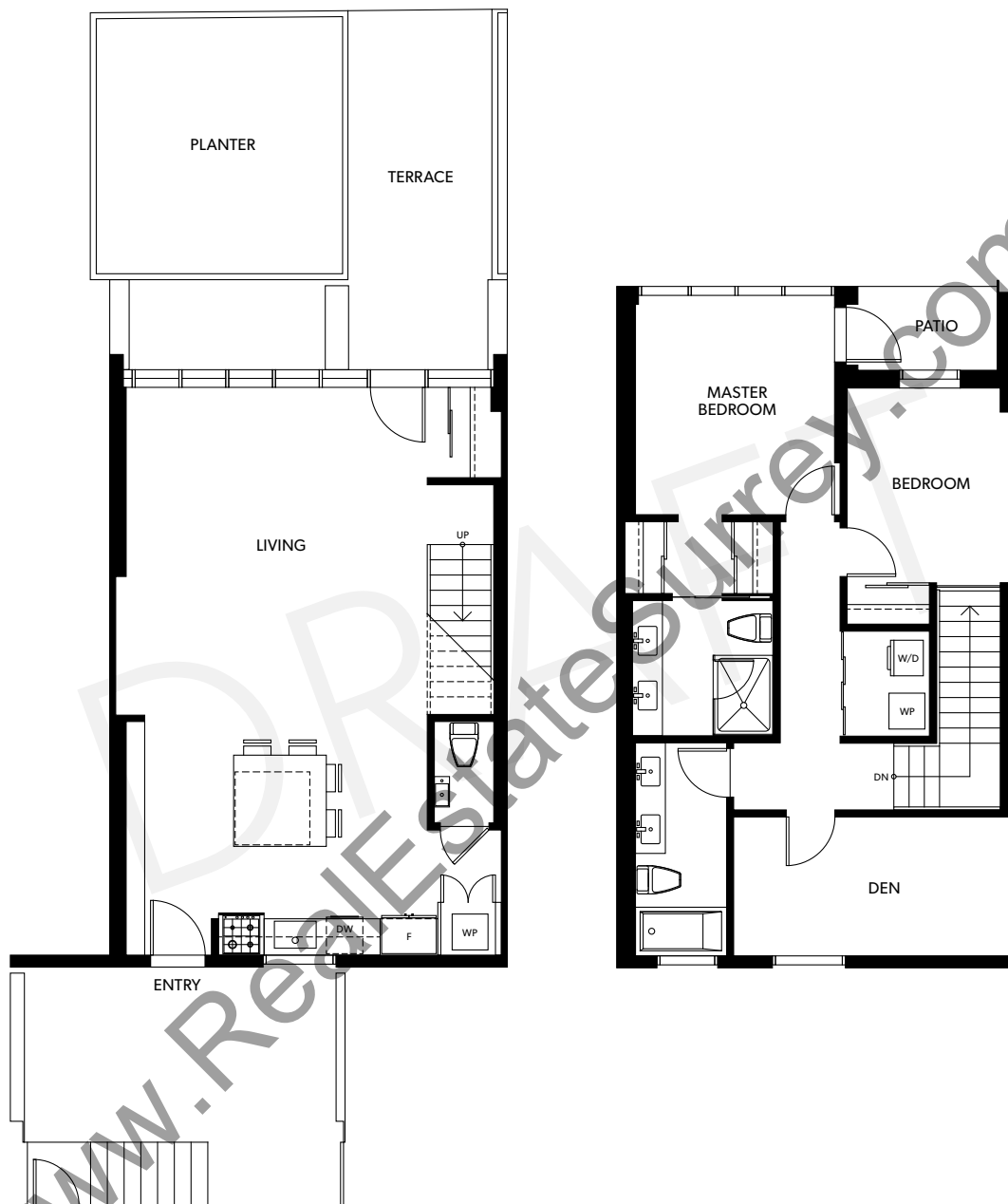
2 BED + DEN, 2.5 BATH

INTERIOR: 1,508 SQ. FT.

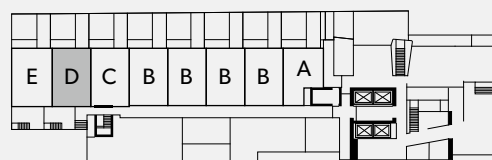
EXTERIOR: 263 SQ. FT.

TOTAL: 1,771 SQ. FT.

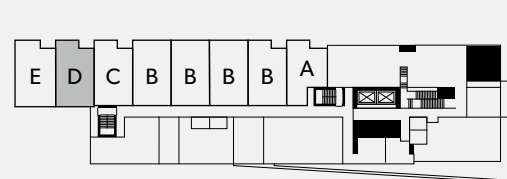
Bright and open 2 level home
featuring modern island kitchen.
Master ensuite features full 5' shower.



FLOOR 1



FLOOR 2



In our continuing effort to improve and maintain the high standard of The Avani Centre development, the developer reserves the right to modify or change plans, specifications, features and prices without notice. Materials may be substituted with equivalent or better at the developer's sole discretion. All dimensions and sizes are approximate and are based on architectural measurements. As reverse, flipped, and/or mirrored plans occur throughout the development please see architectural plans for specific unit layout if material to your decision to purchase. Illustrations, renderings, images and marketing materials provided are an artist's conception only, intended as a general reference, not to be relied upon as, subject to change without prior notice. Please ask one of the helpful sales staff to reference the architectural set of construction drawings for most up to date dimensions, layouts and other details. Please refer to disclosure statement for specific offering details. E. & O. E

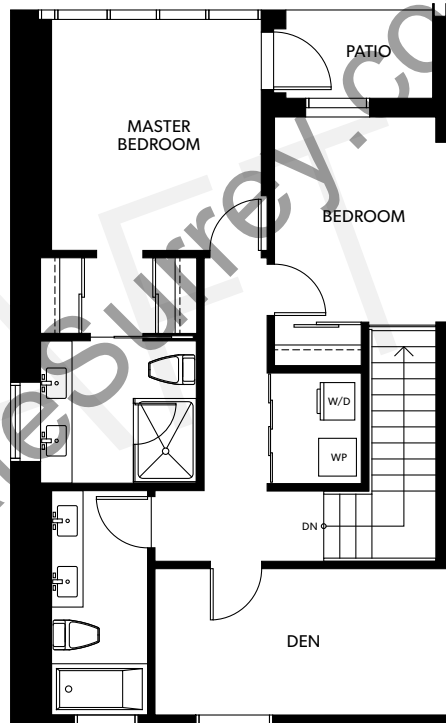
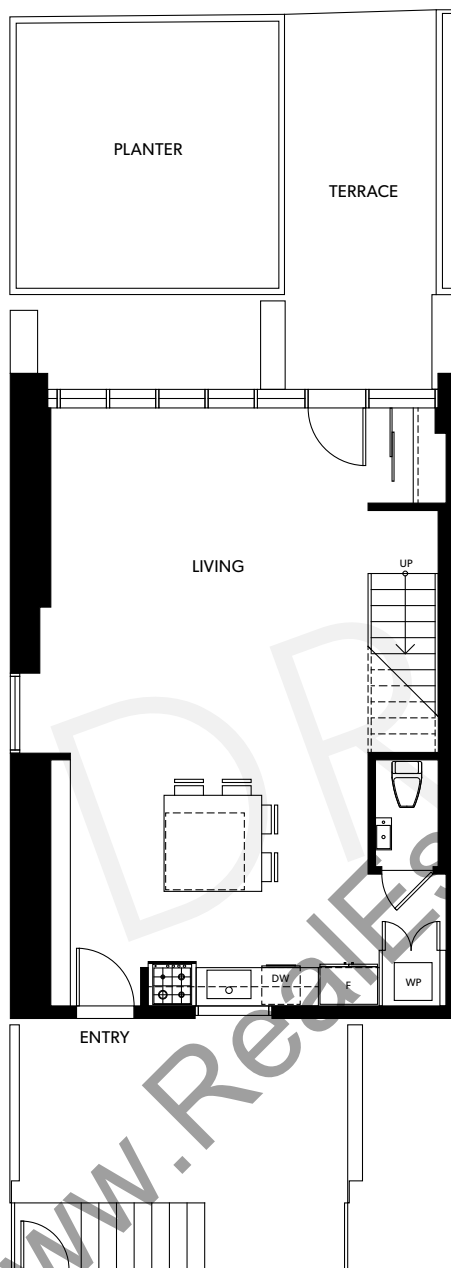


AVANI CENTRE
KING + FRASER

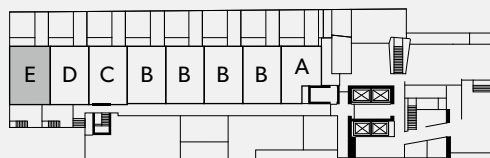
CITY HOME

E 2 BED + DEN, 2.5 BATH
 INTERIOR: 1,597 SQ. FT.
 EXTERIOR: 263 SQ. FT.
TOTAL: 1,860 SQ. FT.

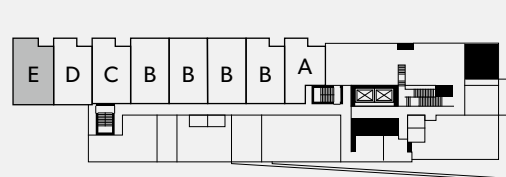
Bright and open 2 level home
 featuring modern island kitchen.
 Master ensuite features full 5' shower.



FLOOR 1



FLOOR 2



In our continuing effort to improve and maintain the high standard of The Avani Centre development, the developer reserves the right to modify or change plans, specifications, features and prices without notice. Materials may be substituted with equivalent or better at the developer's sole discretion. All dimensions and sizes are approximate and are based on architectural measurements. As reverse, flipped, and/or mirrored plans occur throughout the development please see architectural plans for specific unit layout if material to your decision to purchase. Illustrations, renderings, images and marketing materials provided are an artist's conception only, intended as a general reference, not to be relied upon as, subject to change without prior notice. Please ask one of the helpful sales staff to reference the architectural set of construction drawings for most up to date dimensions, layouts and other details. Please refer to disclosure statement for specific offering details. E. & O. E.



AVANI CENTRE
 KING + FRASER