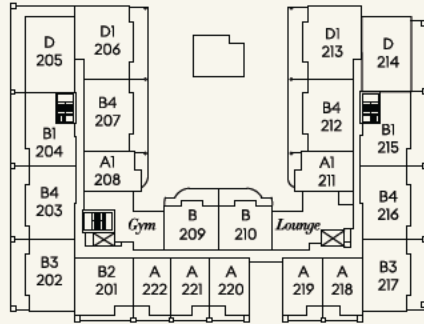
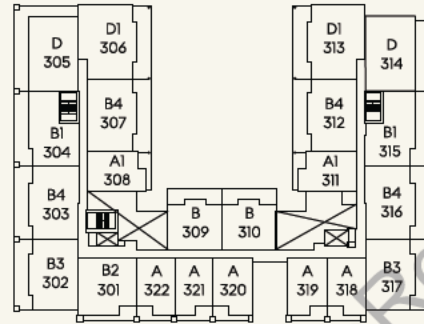


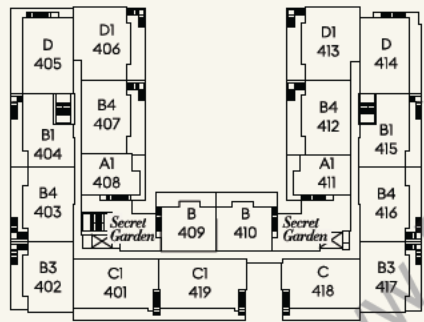
Floor Plate



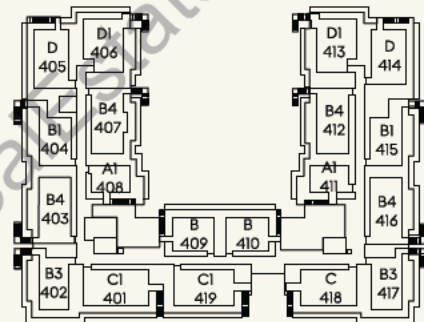
Level 2



Level 3



Level 4



Roof Top

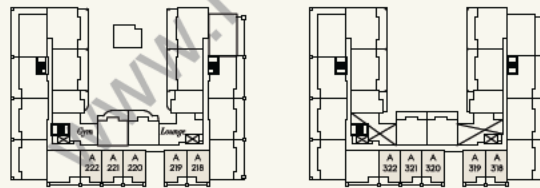
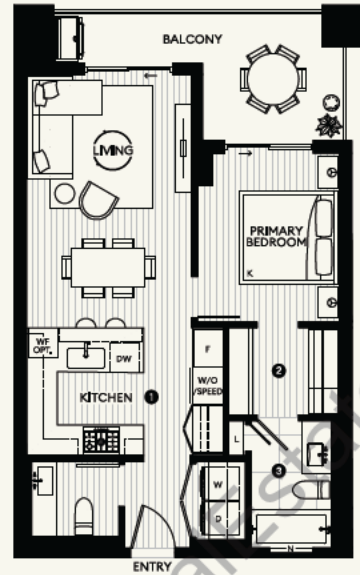


ROCKFORD

A

**1 BEDROOM
1.5 BATH**

TOTAL 799 - 816 SF
Indoor 677 - 688 SF
Outdoor 117 - 136 SF

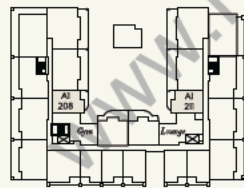
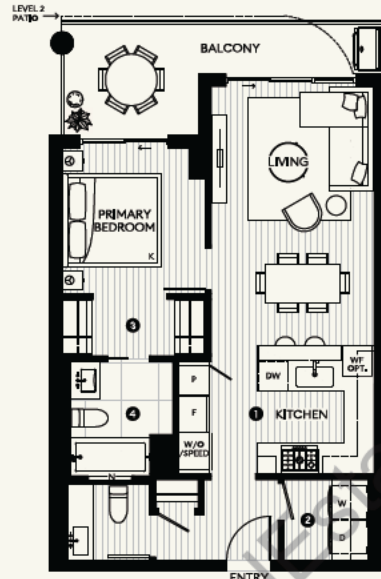


Level 2

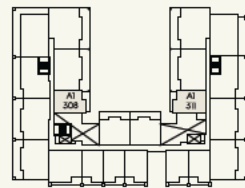
Level 3

- 1 Kitchen**
 - CresseyKitchen™ with Italian Bertazzoni appliances
 - Wide-plank oak hardwood flooring
 - Quartz countertops and stone slab backsplash
 - Natural wood cabinetry with soft-close, under-cabinet LED Lighting, cutlery organizer and magic corner
- 2 Bedroom**
 - Custom built-in wood-grain laminate closets
- 3 Bath**
 - Convenient built-in wall niche
 - Mirrored medicine cabinet with open shelf
 - Nuheat in-floor heating in ensuite

ROCKFORD



Level 2



Level 3



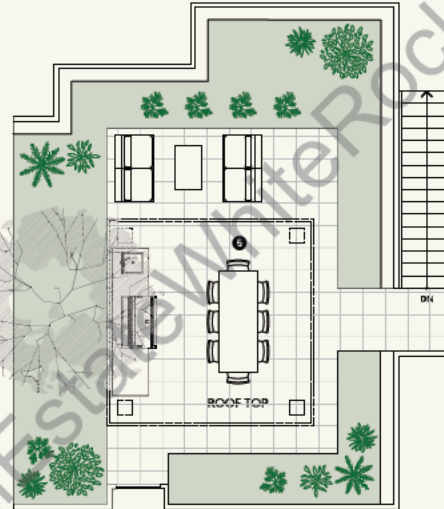
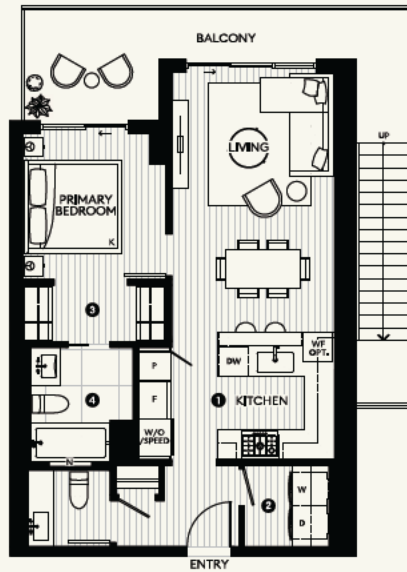
AI

**1 BEDROOM
1.5 BATH**

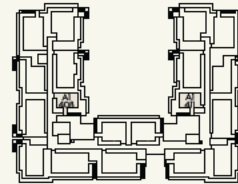
TOTAL	820 - 829 SF
Indoor	700 - 708 SF
Outdoor	115 - 122 SF

- 1 Kitchen**
 - CresseyKitchen™ with Italian Bertazzoni appliances
 - Wide-plank oak hardwood flooring
 - Quartz countertops and stone slab backsplash
 - Natural wood cabinetry with soft-close, under-cabinet LED Lighting, cutlery organizer and magic corner
- 2 Interior**
 - Full-sized side-by-side washer and dryer with countertop, hanging rod and storage above
- 3 Bedroom**
 - Custom built-in wood-grain laminate closets
- 4 Bath**
 - Convenient built-in wall niche
 - Mirrored medicine cabinet with open shelf
 - Nuheat in-floor heating in ensuite

ROCKFORD



Level 4



Roof Top



AI Penthouse

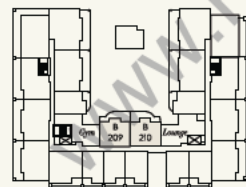
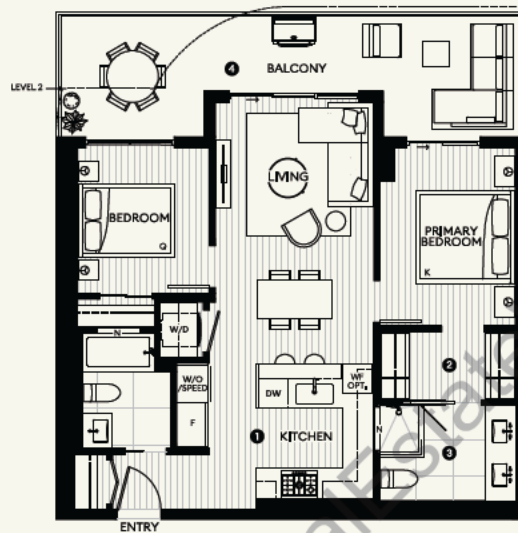
1 BEDROOM
1.5 BATH

TOTAL	1,288 - 1,291 SF
Indoor	700 - 708 SF
Outdoor	580 - 591 SF

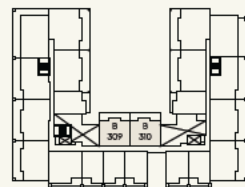
- 1 Kitchen**
 - CresseyKitchen™ with Italian Bertazzoni appliances
 - Wide-plank oak hardwood flooring
 - Quartz countertops and stone slab backsplash
 - Natural wood cabinetry with soft-close, under-cabinet LED Lighting, cutlery organizer and magic corner
- 2 Interior**
 - Full-sized side-by-side washer and dryer with countertop, hanging rod and storage above
- 3 Bedroom**
 - Custom built-in wood-grain laminate closets
- 4 Bath**
 - Convenient built-in wall niche
 - Mirrored medicine cabinet with open shelf
 - Nuheat in-floor heating in ensuite
- 5 Outdoor**
 - Large, private rooftop patios with outdoor kitchen, optional hot tub, and trellis

ROCKFORD

B



Level 2



Level 3



2 BEDROOM 2 BATH

TOTAL	1,061 - 1,069 SF
Indoor	840 SF
Outdoor	222 - 229 SF

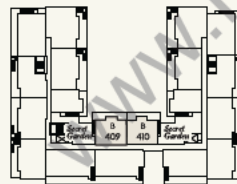
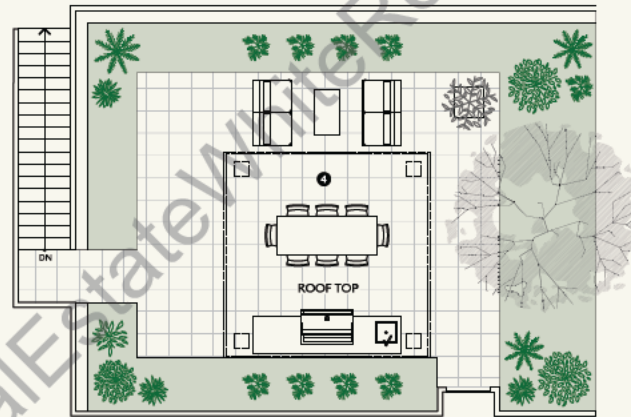
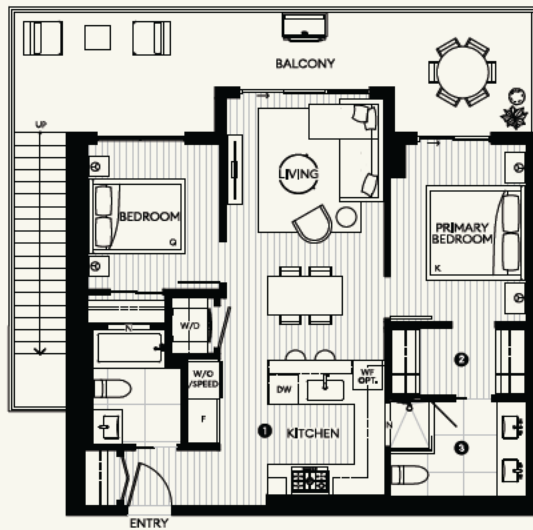
- 1 Kitchen**
 - CresseyKitchen™ with Italian Bertazzoni appliances
 - Wide-plank oak hardwood flooring
 - Quartz countertops and stone slab backsplash
 - Natural wood cabinetry with soft-close, under-cabinet LED Lighting, cutlery organizer and magic corner
- 2 Bedroom**
 - Custom built-in wood-grain laminate closets
- 3 Bath**
 - Frameless glass shower with niche and rain showerhead
 - Double vanity with quartz countertop and wood cabinetry
 - Mirrored medicine cabinet with open shelf
 - Nuheat in-floor heating in ensuite
- 4 Outdoor**
 - Large, functional private outdoor area

ROCKFORD

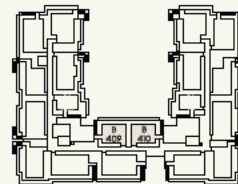
B Penthouse

**2 BEDROOM
2 BATH**

TOTAL 1,692 SF
Indoor 840 SF
Outdoor 853 SF



Level 4



Roof Top



- 1 Kitchen**

 - CresseyKitchen™ with Italian Bertazzoni appliances
 - Wide-plank oak hardwood flooring
 - Quartz countertops and stone slab backsplash
 - Natural wood cabinetry with soft-close, under-cabinet LED Lighting, cutlery organizer and magic corner
- 2 Bedroom**

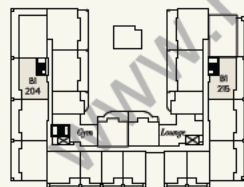
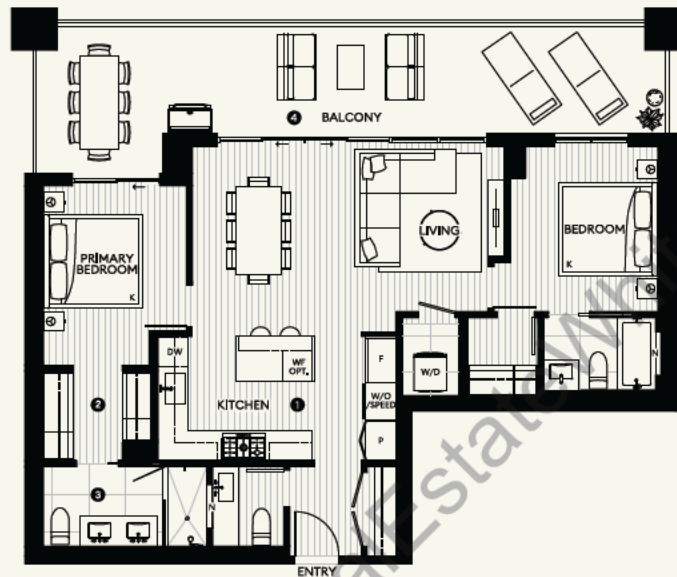
 - Custom built-in wood-grain laminate closets
- 3 Bath**

 - Frameless glass shower with niche and rain showerhead
 - Double vanity with quartz countertop and wood cabinetry
 - Mirrored medicine cabinet with open shelf
 - Nuheat in-floor heating in ensuite
- 4 Outdoor**

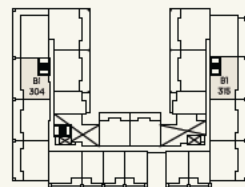
 - Large, private rooftop patios with outdoor kitchen, optional hot tub, and trellis

ROCKFORD

BI



Level 2



Level 3



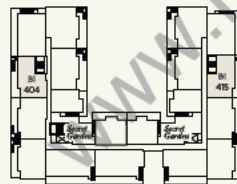
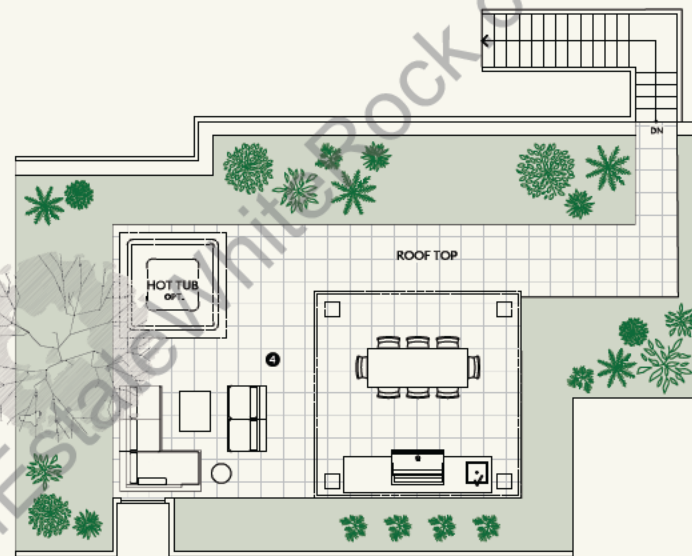
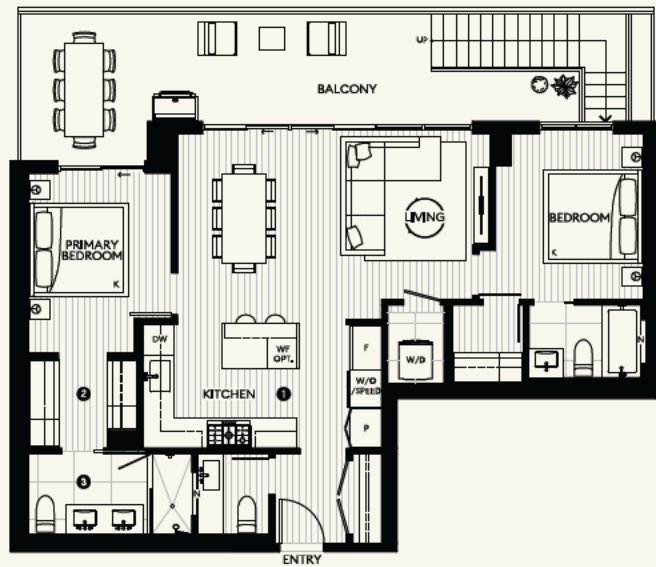
**2 BEDROOM
2.5 BATH**

TOTAL 1,370 - 1,434 SF
Indoor 1,018 - 1,041 SF
Outdoor 352 - 393 SF

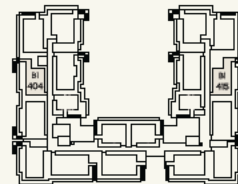
- 1 Kitchen**
 - CresseyKitchen™ with Italian Bertazzoni appliances
 - Wide-plank oak hardwood flooring
 - Quartz countertops and stone slab backsplash
 - Natural wood cabinetry with soft-close, under-cabinet LED Lighting, cutlery organizer and magic corner
- 2 Bedroom**
 - Custom built-in wood-grain laminate closets
- 3 Bath**
 - Frameless glass shower with niche and rain showerhead
 - Double vanity with quartz countertop and wood cabinetry
 - Mirrored medicine cabinet with open shelf
 - Nuheat in-floor heating in ensuite
- 4 Outdoor**
 - Large, functional private outdoor area

ROCKFORD

B I Penthouse



Level 4



Roof Top

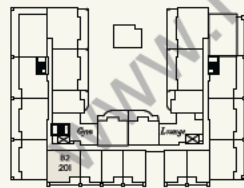
2 BEDROOM
2.5 BATH

TOTAL 2,002 - 2,053 SF
Indoor 1,018 - 1,041 SF
Outdoor 984 - 1,012 SF

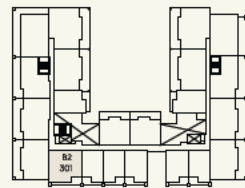
- 1 Kitchen**
 - CresseyKitchen™ with Italian Bertazzoni appliances
 - Wide-plank oak hardwood flooring
 - Quartz countertops and stone slab backsplash
 - Natural wood cabinetry with soft-close, under-cabinet LED Lighting, cutlery organizer and magic corner
- 2 Bedroom**
 - Custom built-in wood-grain laminate closets
- 3 Bath**
 - Frameless glass shower with niche and rain showerhead
 - Double vanity with quartz countertop and wood cabinetry
 - Mirrored medicine cabinet with open shelf
 - Nuheat in-floor heating in ensuite
- 4 Outdoor**
 - Large, private rooftop patios with outdoor kitchen, optional hot tub, and trellis

ROCKFORD

B₂



Level 2



Level 3

**2 BEDROOM
2.5 BATH**

TOTAL 1,219 - 1,232 SF
Indoor 1,061 SF
Outdoor 158 - 171 SF

- 1 Kitchen**

 - CresseyKitchen™ with Italian Bertazzoni appliances
 - Wide-plank oak hardwood flooring
 - Quartz countertops and stone slab backsplash
 - Natural wood cabinetry with soft-close, under-cabinet LED lighting, cutlery organizer and magic corner
- 2 Interior**

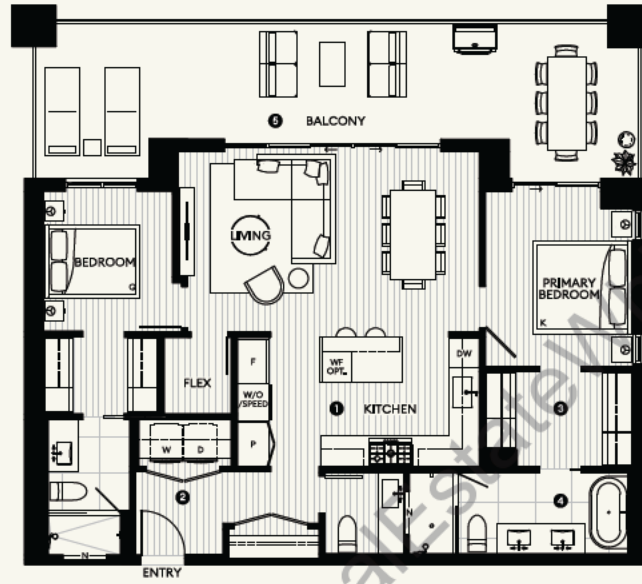
 - Full-sized side-by-side washer and dryer with countertop, hanging rod and storage above
- 3 Bedroom**

 - Custom built-in wood-grain laminate closets
- 4 Bath**

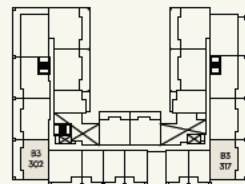
 - Frameless glass shower with niche and rain showerhead
 - Freestanding large soaker tub with sophisticated polished chrome fixtures
 - Double vanity with quartz countertop and wood cabinetry
 - Mirrored medicine cabinet with open shelf
 - Nuheat in-floor heating in ensuite

ROCKFORD

B₃



Level 2



Level 3

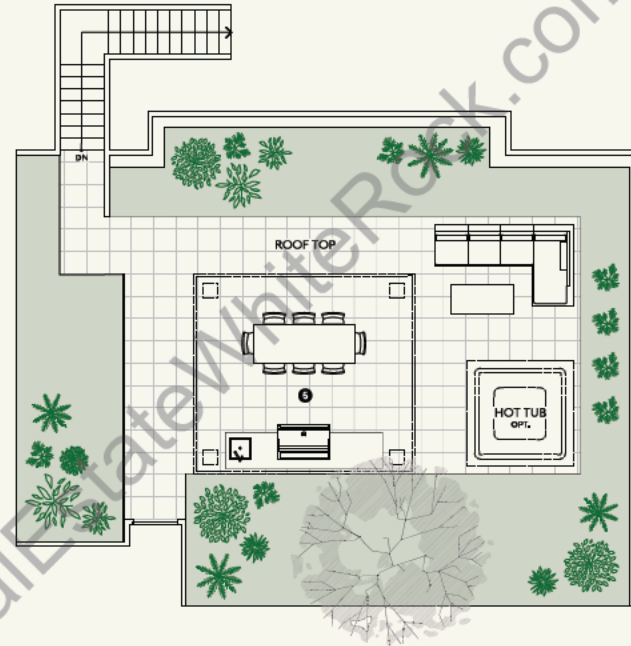
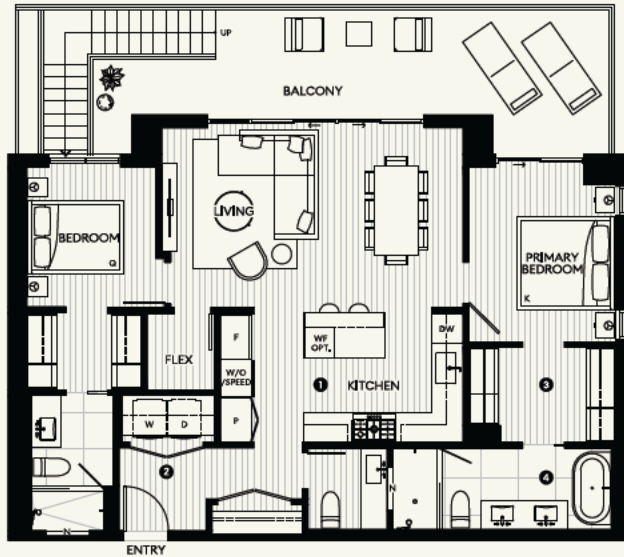


**2 BEDROOM + FLEX
2.5 BATH**

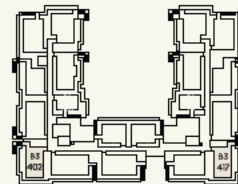
TOTAL	1,490 - 1,527 SF
Indoor	1,130 - 1,131 SF
Outdoor	360 - 396 SF

- 1 Kitchen**
 - CresseyKitchen™ with Italian Bertazzoni appliances
 - Wide-plank oak hardwood flooring
 - Quartz countertops and stone slab backsplash
 - Natural wood cabinetry with soft-close, under-cabinet LED Lighting, cutlery organizer and magic corner
- 2 Interior**
 - Full-sized side-by-side washer and dryer with countertop, hanging rod and storage above
- 3 Bedroom**
 - Custom built-in wood-grain laminate closets
- 4 Bath**
 - Frameless glass shower with niche and rain showerhead
 - Freestanding large soaker tub with sophisticated polished chrome fixtures
 - Double vanity with quartz countertop and wood cabinetry
 - Mirrored medicine cabinet with open shelf
 - Nuheat in-floor heating in ensuite
- 5 Outdoor**
 - Large, functional private outdoor area

ROCKFORD



Level 4



Roof Top

B₃ Penthouse

2 BEDROOM + FLEX
2.5 BATH

TOTAL 2,112 - 2,143 SF

Indoor 1,130 - 1,131 SF

Outdoor 982 - 1,012 SF

- 1 Kitchen**

 - CresseyKitchen™ with Italian Bertazzoni appliances
 - Wide-plank oak hardwood flooring
 - Quartz countertops and stone slab backsplash
 - Natural wood cabinetry with soft-close, under-cabinet LED lighting, cutlery organizer and magic corner
- 2 Interior**

 - Full-sized side-by-side washer and dryer with countertop, hanging rod and storage above
- 3 Bedroom**

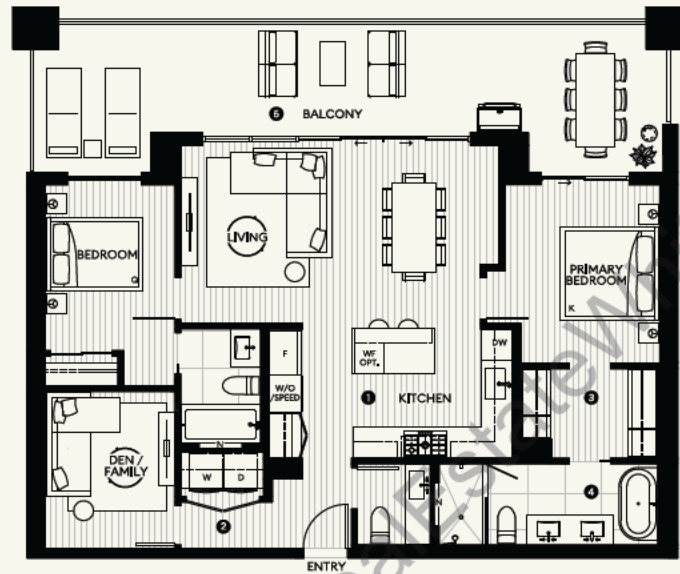
 - Custom built-in wood-grain laminate closets
- 4 Bath**

 - Frameless glass shower with niche and rain showerhead
 - Freestanding large soaker tub with sophisticated polished chrome fixtures
 - Double vanity with quartz countertop and wood cabinetry
 - Mirrored medicine cabinet with open shelf
 - Nuheat in-floor heating in ensuite
- 5 Outdoor**

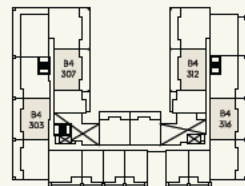
 - Large, functional private outdoor area

ROCKFORD

B4



Level 2



Level 3



2 BEDROOM + DEN/FAMILY 2.5 BATH

TOTAL	1,584 - 1,604 SF
Indoor	1,164 - 1,188 SF
Outdoor	377 - 439 SF

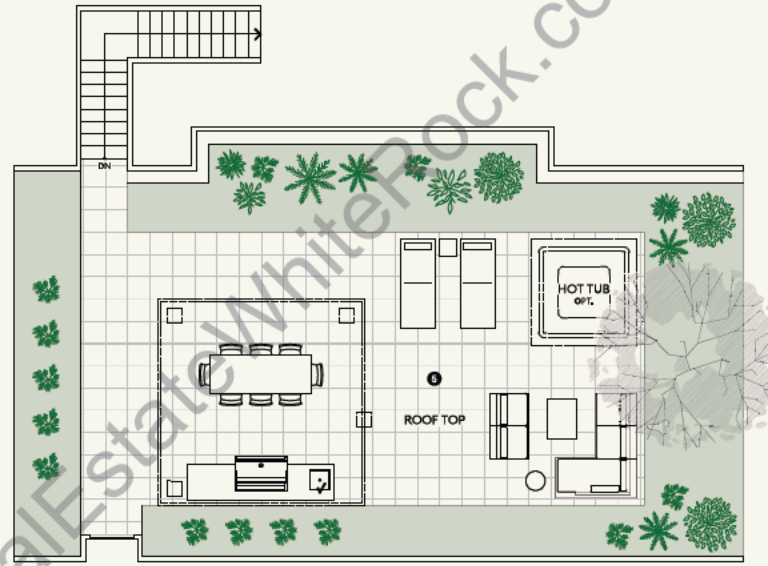
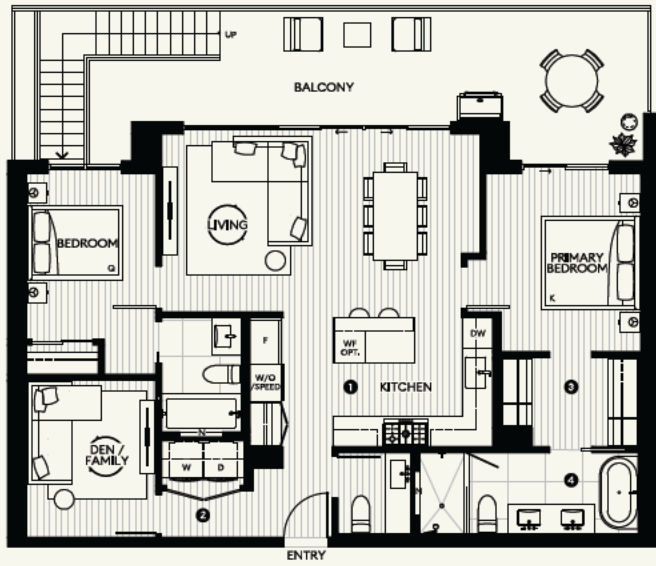
- 1 Kitchen**
 - CresseyKitchen™ with Italian Bertazzoni appliances
 - Wide-plank oak hardwood flooring
 - Quartz countertops and stone slab backsplash
 - Natural wood cabinetry with soft-close, under-cabinet LED Lighting, cutlery organizer and magic corner
- 2 Interior**
 - Full-sized side-by-side washer and dryer with countertop, hanging rod and storage above
- 3 Bedroom**
 - Custom built-in wood-grain laminate closets
- 4 Bath**
 - Frameless glass shower with niche and rain showerhead
 - Freestanding large soaker tub with sophisticated polished chrome fixtures
 - Double vanity with quartz countertop and wood cabinetry
 - Mirrored medicine cabinet with open shelf
 - Nuheat in-floor heating in ensuite
- 5 Outdoor**
 - Large, functional private outdoor area



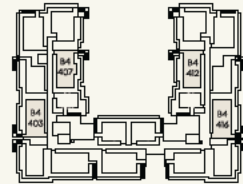
RockfordByCressey.com

This is not an offering for sale. Any such offering may only be made after filing a Disclosure Statement. The developer reserves the right to modify or make substitutes to the building design, specifications, and floorplans should they be necessary. Optional features include the rooftop trellis, hot tub, and kitchen wine fridge. Renderings, views, and layouts are for illustration purposes only. Some floorplans may be mirror reversed from the layout above. Please refer to the final architectural plans for specific unit details. Sales powered by M.I.A. Canada Realty, L.A.C.E.

ROCKFORD



Level 4



Roof Top

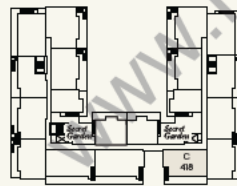
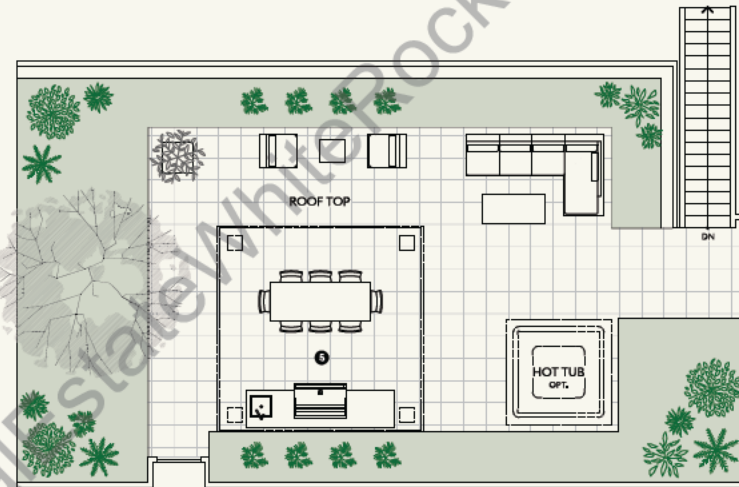
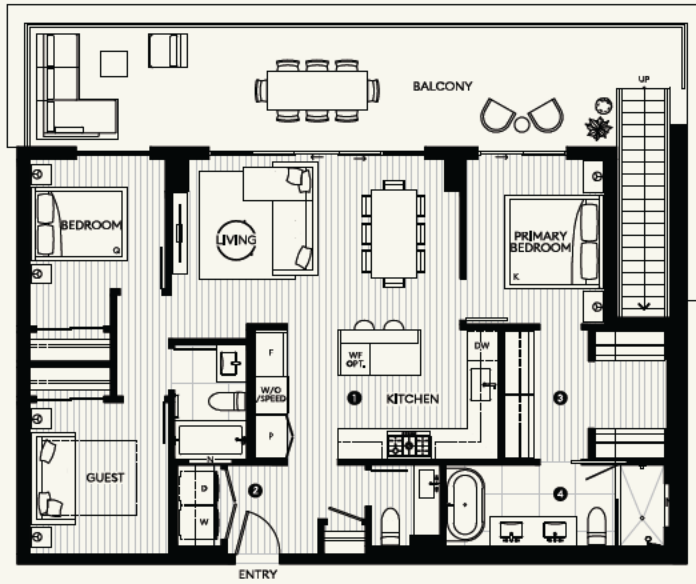
B₄ Penthouse

2 BEDROOM + DEN/FAMILY
2.5 BATH

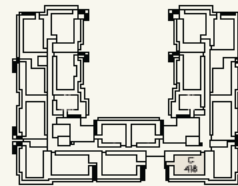
TOTAL	2,344 - 2,371 SF
Indoor	1,164 - 1,188 SF
Outdoor	1,156 - 1,199 SF

- 1 Kitchen**
 - CresseyKitchen™ with Italian Bertazzani appliances
 - Wide-plank oak hardwood flooring
 - Quartz countertops and stone slab backsplash
 - Natural wood cabinetry with soft-close, under-cabinet LED lighting, cutlery organizer and magic corner
- 2 Interior**
 - Full-sized side-by-side washer and dryer with countertop, hanging rod and storage above
- 3 Bedroom**
 - Custom built-in wood-grain laminate closets
- 4 Bath**
 - Frameless glass shower with niche and rain showerhead
 - Freestanding large soaker tub with sophisticated polished chrome fixtures
 - Double vanity with quartz countertop and wood cabinetry
 - Mirrored medicine cabinet with open shelf
 - Nuheat in-floor heating in ensuite
- 5 Outdoor**
 - Large, functional private outdoor area

ROCKFORD



Level 4



Roof Top



C Penthouse

2 BEDROOM + GUEST
2.5 BATH

TOTAL 2,322 SF

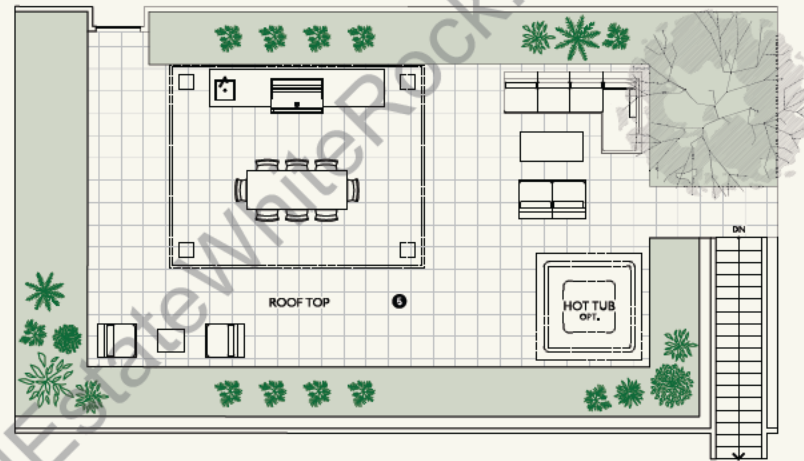
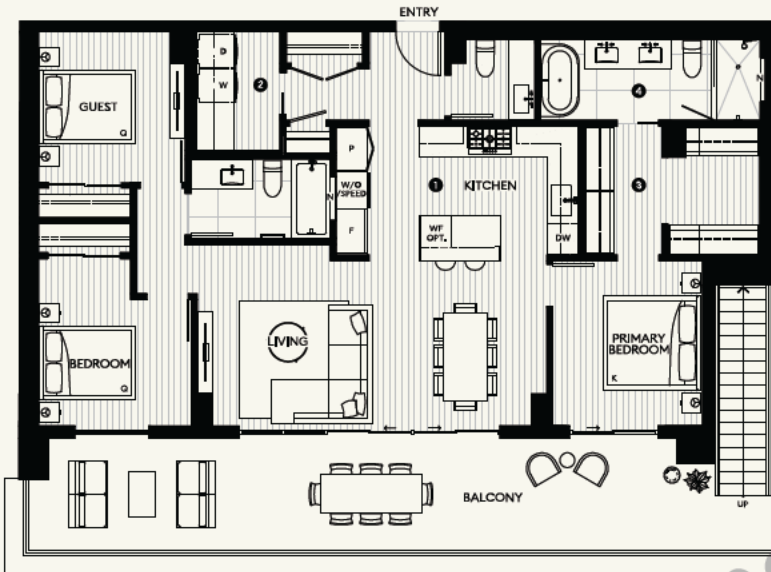
Indoor 1,195 SF

Outdoor 1,127 SF

- 1 **Kitchen**
 - CresseyKitchen™ with Italian Bertazzoni appliances
 - Wide-plank oak hardwood flooring
 - Quartz countertops and stone slab backsplash
 - Natural wood cabinetry with soft-close, under-cabinet LED lighting, cutlery organizer and magic corner
- 2 **Interior**
 - Full-sized side-by-side washer and dryer with countertop, hanging rod and storage above
- 3 **Bedroom**
 - Custom built-in wood-grain laminate closets
- 4 **Bath**
 - Frameless glass shower with niche and rain showerhead
 - Freestanding large soaker tub with sophisticated polished chrome fixtures
 - Double vanity with quartz countertop and wood cabinetry
 - Mirrored medicine cabinet with open shelf
 - Nuheat in-floor heating in ensuite
- 5 **Outdoor**
 - Large, functional private outdoor area

ROCKFORD

CI Penthouse



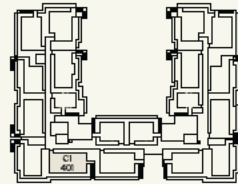
**2 BEDROOM + GUEST
2.5 BATH**

TOTAL 2,671 SF
Indoor 1,354 SF
Outdoor 1,316 SF

- 1 Kitchen**
 - CresseyKitchen™ with Italian Bertazzoni appliances
 - Wide-plank oak hardwood flooring
 - Quartz countertops and stone slab backsplash
 - Natural wood cabinetry with soft-close, under-cabinet LED lighting, cutlery organizer and magic corner
- 2 Interior**
 - Full-sized side-by-side washer and dryer with countertop, hanging rod and storage above
- 3 Bedroom**
 - Custom built-in wood-grain laminate closets
- 4 Bath**
 - Frameless glass shower with niche and rain showerhead
 - Freestanding large soaker tub with sophisticated polished chrome fixtures
 - Double vanity with quartz countertop and wood cabinetry
 - Mirrored medicine cabinet with open shelf
 - Nuheat in-floor heating in ensuite
- 5 Outdoor**
 - Large, functional private outdoor area



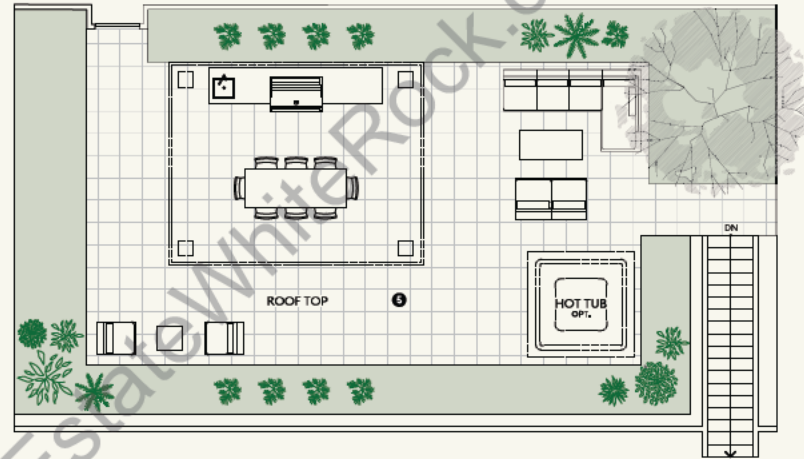
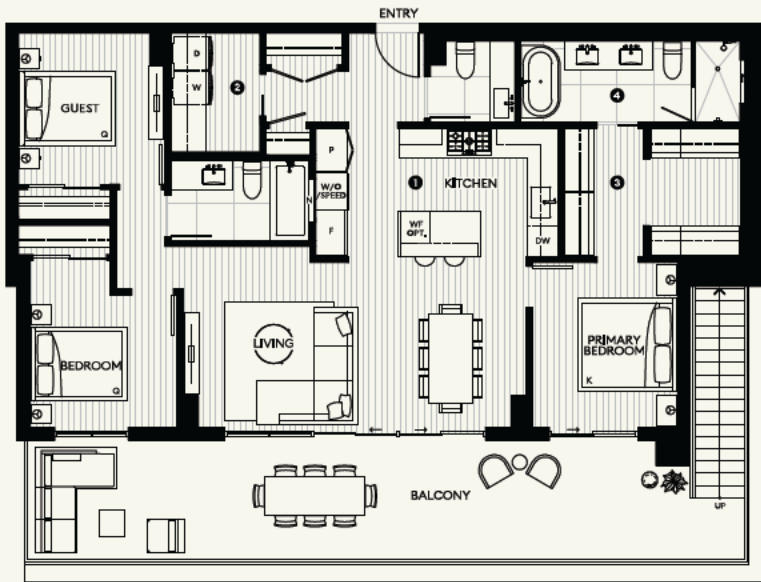
Level 4



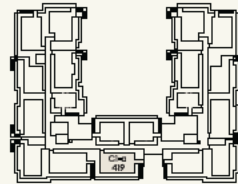
Roof Top



ROCKFORD



Level 4



Roof Top



CI-a Penthouse

2 BEDROOM + GUEST
2.5 BATH

TOTAL 2,590 SF
Indoor 1,344 SF
Outdoor 1,246 SF

- 1 Kitchen**

 - CresseyKitchen™ with Italian Bertazzoni appliances
 - Wide-plank oak hardwood flooring
 - Quartz countertops and stone slab backsplash
 - Natural wood cabinetry with soft-close, under-cabinet LED Lighting, cutlery organizer and magic corner
- 2 Interior**

 - Full-sized side-by-side washer and dryer with countertop, hanging rod and storage above
- 3 Bedroom**

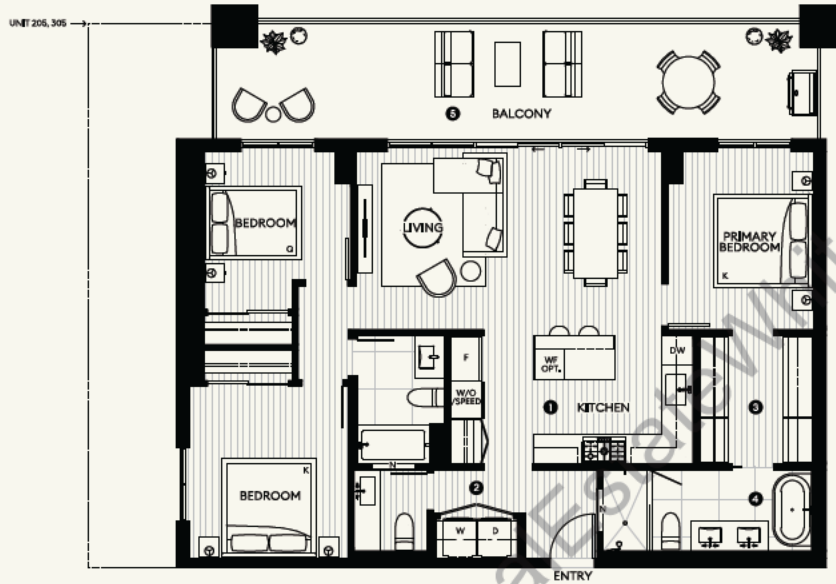
 - Custom built-in wood-grain laminate closets
- 4 Bath**

 - Frameless glass shower with niche and rain showerhead
 - Freestanding large soaker tub with sophisticated polished chrome fixtures
 - Double vanity with quartz countertop and wood cabinetry
 - Mirrored medicine cabinet with open shelf
 - Nuheat in-floor heating in ensuite
- 5 Outdoor**

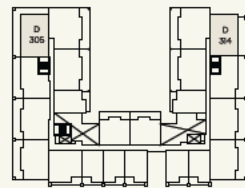
 - Large, functional private outdoor area

ROCKFORD

D



Level 2



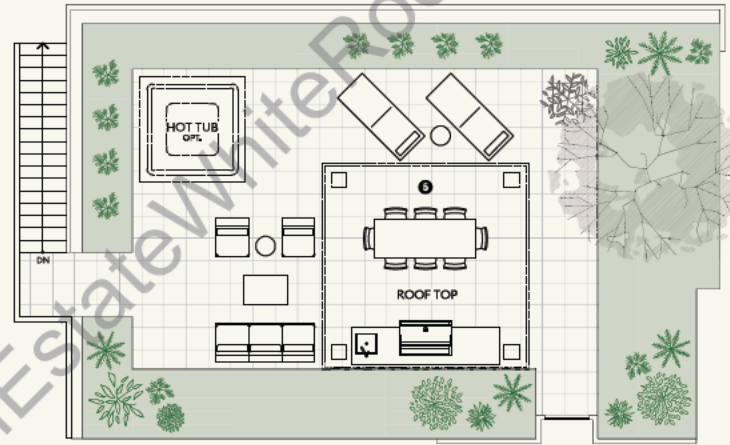
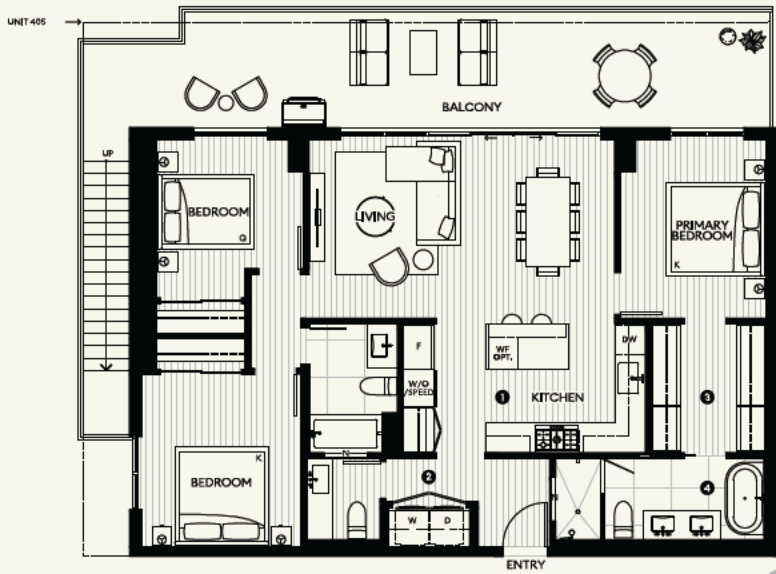
Level 3

3 BEDROOM
2.5 BATH

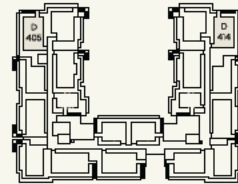
TOTAL	1,573 - 1,821 SF
Indoor	1,244 - 1,249 SF
Outdoor	328 - 577 SF

- 1 Kitchen**
 - CresseyKitchen™ with Italian Bertazzoni appliances
 - Wide-plank oak hardwood flooring
 - Quartz countertops and stone slab backsplash
 - Natural wood cabinetry with soft-close, under-cabinet LED Lighting, cutlery organizer and magic corner
- 2 Interior**
 - full-sized side-by-side washer and dryer with countertop, hanging rod and storage above
- 3 Bedroom**
 - Custom built-in wood-grain laminate closets
- 4 Bath**
 - Frameless glass shower with niche and rain showerhead
 - Freestanding large soaker tub with sophisticated polished chrome fixtures
 - Double vanity with quartz countertop and wood cabinetry
 - Mirrored medicine cabinet with open shelf
 - Nuheat in-floor heating in ensuite
- 5 Outdoor**
 - Large, functional private outdoor area

ROCKFORD



Level 4



Roof Top

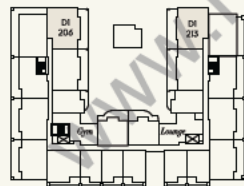
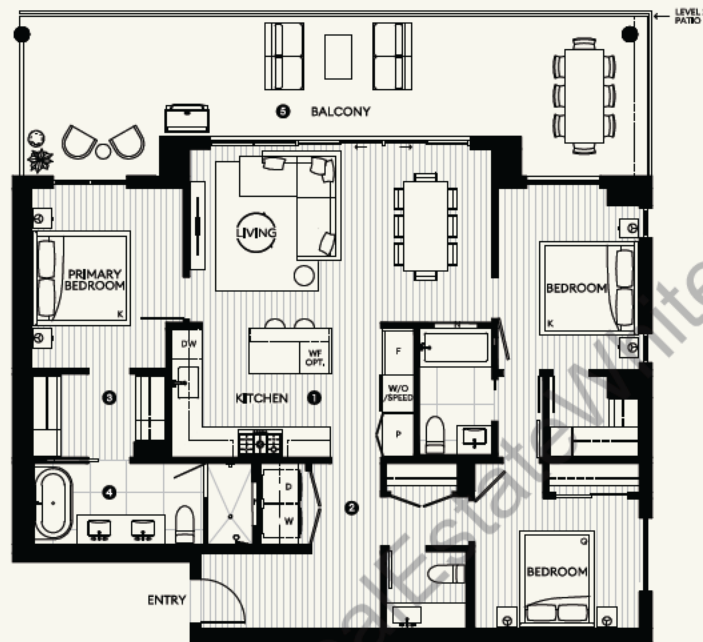
D Penthouse

**3 BEDROOM
2.5 BATH**

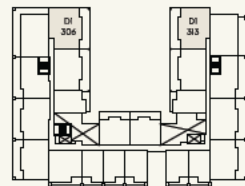
TOTAL 2,389 - 2,394 SF
Indoor 1,244 - 1,249 SF
Outdoor 1,144 - 1,145 SF

- 1 Kitchen**
 - CresseyKitchen™ with Italian Bertazzoni appliances
 - Wide-plank oak hardwood flooring
 - Quartz countertops and stone slab backsplash
 - Natural wood cabinetry with soft-close, under-cabinet LED lighting, cutlery organizer and magic corner
- 2 Interior**
 - Full-sized side-by-side washer and dryer with countertop, hanging rod and storage above
- 3 Bedroom**
 - Custom built-in wood-grain laminate closets
- 4 Bath**
 - Frameless glass shower with niche and rain showerhead
 - Freestanding large soaker tub with sophisticated polished chrome fixtures
 - Double vanity with quartz countertop and wood cabinetry
 - Mirrored medicine cabinet with open shelf
 - Nuheat in-floor heating in ensuite
- 5 Outdoor**
 - Large, functional private outdoor area

ROCKFORD



Level 2



Level 3



DI

**3 BEDROOM
2.5 BATH**

TOTAL 1,724 - 1,761 SF
Indoor 1,314 SF
Outdoor 410 - 437 SF

- 1 Kitchen**
 - CresseyKitchen™ with Italian Bertazzoni appliances
 - Wide-plank oak hardwood flooring
 - Quartz countertops and stone slab backsplash
 - Natural wood cabinetry with soft-close, under-cabinet LED Lighting, cutlery organizer and magic corner
- 2 Interior**
 - Full-sized side-by-side washer and dryer with countertop, hanging rod and storage above
- 3 Bedroom**
 - Custom built-in wood-grain laminate closets
- 4 Bath**
 - Frameless glass shower with niche and rain showerhead
 - Freestanding large soaker tub with sophisticated polished chrome fixtures
 - Double vanity with quartz countertop and wood cabinetry
 - Mirrored medicine cabinet with open shelf
 - Nuheat in-floor heating in ensuite
- 5 Outdoor**
 - Large, functional private outdoor area

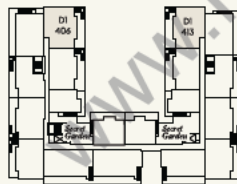
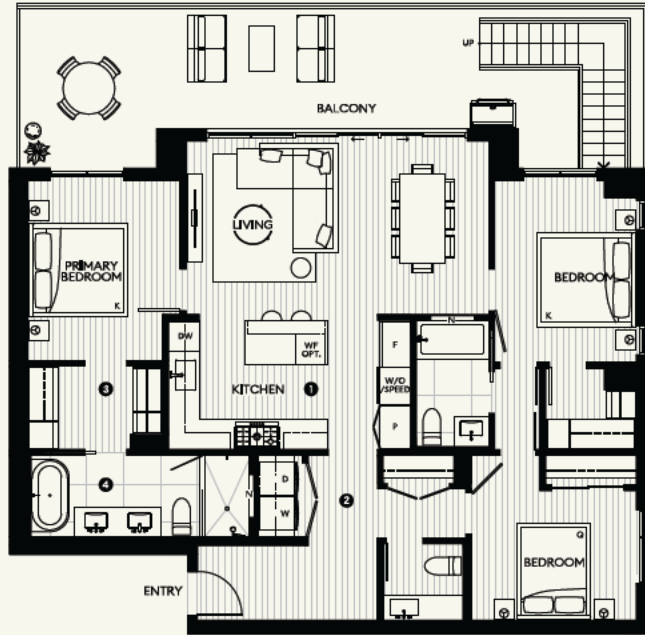


RockfordByCressey.com

This is not an offering for sale. Any such offering may only be made after filing a Disclosure Statement. The developer reserves the right to modify or make substitutes to the building design, specifications, and floorplans should they be necessary. Optional features include the rooftop trellis, hot tub, and kitchen wine fridge. Renderings, views, and layouts are for illustration purposes only. Some floorplans may be mirror reversed from the layout above. Please refer to the final architectural plans for specific unit details. Sales powered by M.I.A. Canada Realty, L.A.C.E.

ROCKFORD

DI Penthouse



Level 4



Roof Top

3 BEDROOM
2.5 BATH

TOTAL 2,503 SF
Indoor 1,314 SF
Outdoor 1,188 SF

- 1 Kitchen**
 - CresseyKitchen™ with Italian Bertazzoni appliances
 - Wide-plank oak hardwood flooring
 - Quartz countertops and stone slab backsplash
 - Natural wood cabinetry with soft-close, under-cabinet LED lighting, cutlery organizer and magic corner
- 2 Interior**
 - Full-sized side-by-side washer and dryer with countertop, hanging rod and storage above
- 3 Bedroom**
 - Custom built-in wood-grain laminate closets
- 4 Bath**
 - Frameless glass shower with niche and rain showerhead
 - Freestanding large soaker tub with sophisticated polished chrome fixtures
 - Double vanity with quartz countertop and wood cabinetry
 - Mirrored medicine cabinet with open shelf
 - Nuheat in-floor heating in ensuite
- 5 Outdoor**
 - Large, functional private outdoor area