



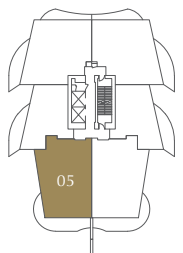
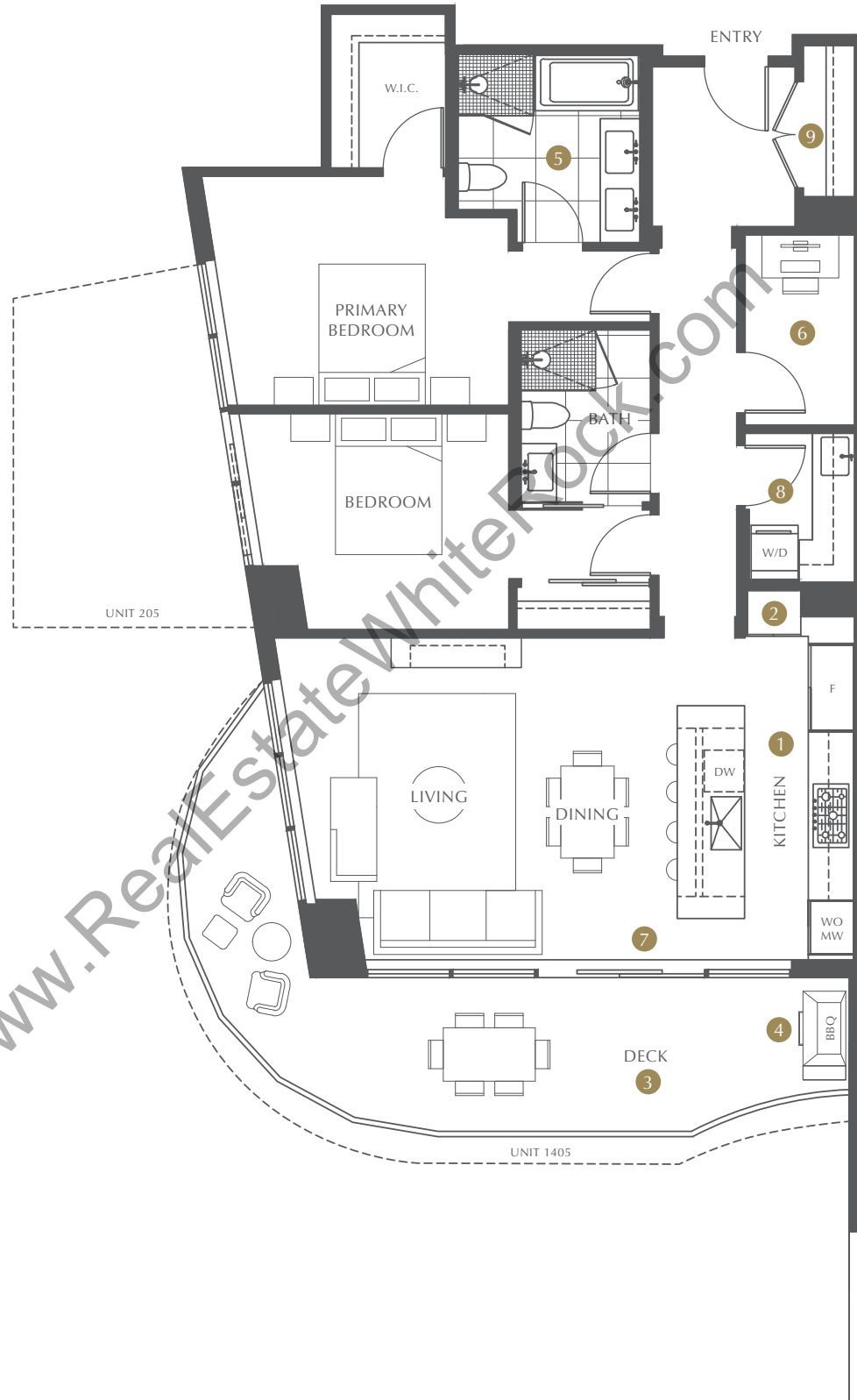
# THE LANDMARK AT FOSTER · MARTIN

# A WEST

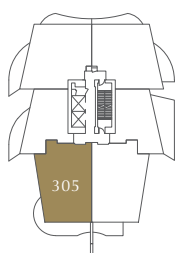
2 BEDROOM & DEN  
2 BATHROOM

INTERIOR 1,256 SQ FT  
EXTERIOR 183-307 SQ FT  
TOTAL 1,439-1,563 SQ FT

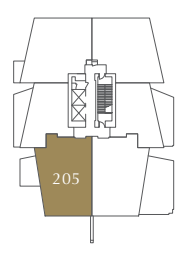
- 1 Premium Miele full-size kitchen appliance package including integrated 48" side-by-side fridge and freezer
- 2 Thoughtful integrated pantry in kitchen
- 3 Spacious wrap-around deck
- 4 Natural gas connection for BBQ and/or outdoor heaters
- 5 Ensuite features in-floor radiant heating and vanity cabinet behind mirrors provides additional storage space
- 6 Practical den ideal for a home office
- 7 Wrap-around expansive windows in the living room and kitchen
- 8 Laundry room features full-size washer and dryer, sink, lengthy countertop space with cabinet and shelving for additional storage
- 9 Grand entry foyer with oversized closet ideal for storing golf clubs, luggage and other large storage items



LEVELS 4-14

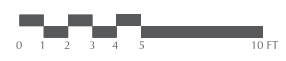


LEVEL 3



LEVEL 2

FOSTER STREET »»



Unit numbering and floor numbers are currently subject to change, pending approval by the City of White Rock. If discrepancies occur, the unit number on the contract of purchase and sale will be deemed to be correct. In our continuing effort to improve and maintain the high standard of the Foster Martin development, the developer reserves the right to modify or change plans, specifications, features and prices without notice. All dimensions and areas are approximate and are based on Architectural measurements. Windows, columns, privacy screens, demising walls may vary depending upon the plan and floor level. Please see disclosure statement for specific offering details. E.&O.E.



# THE LANDMARK

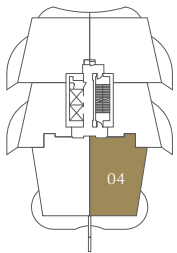
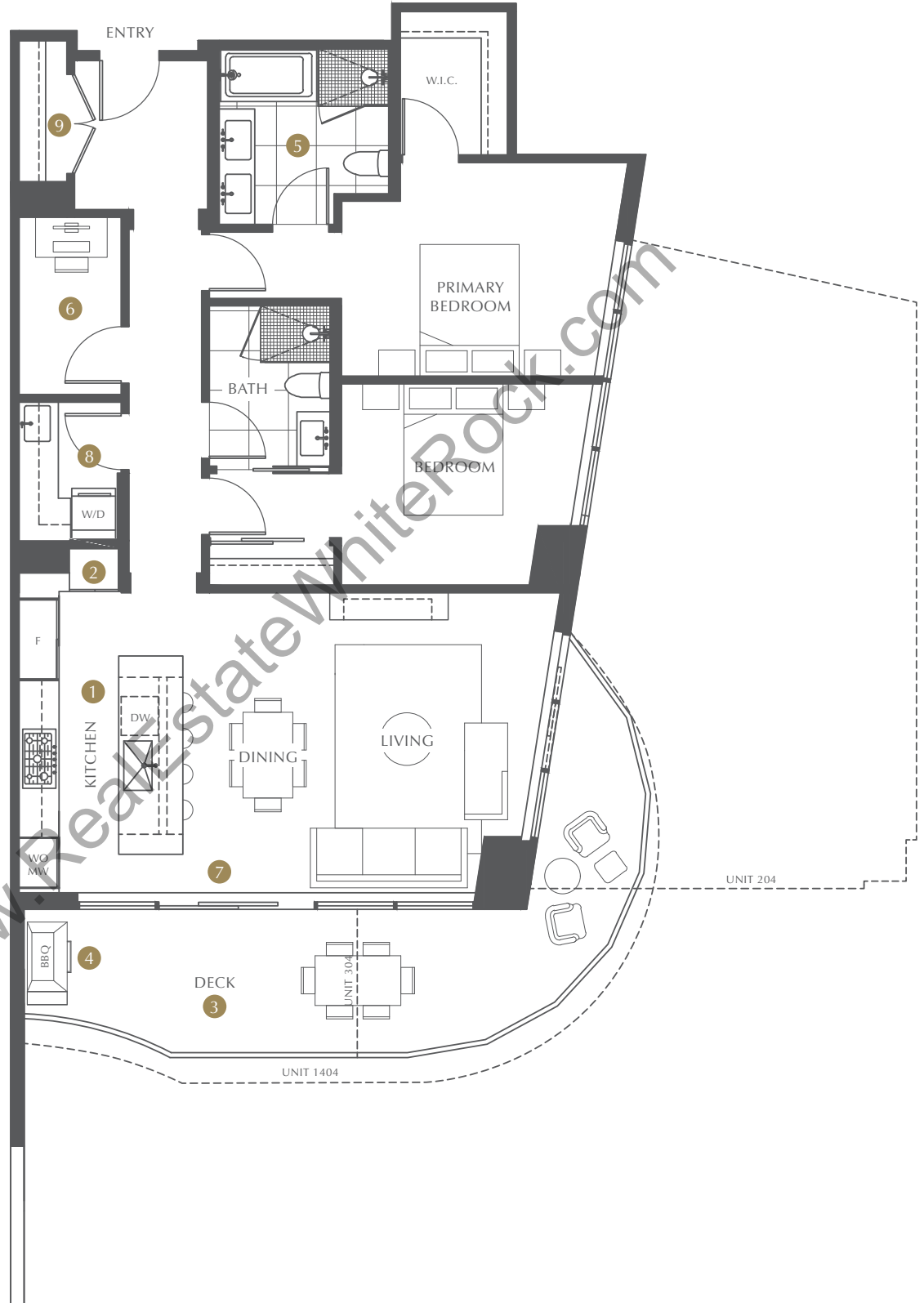
AT FOSTER · MARTIN

# A EAST

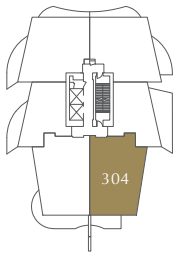
2 BEDROOM & DEN  
2 BATHROOM

INTERIOR	1,256 SQ FT
EXTERIOR	116-610 SQ FT
TOTAL	1,372-1,866 SQ FT

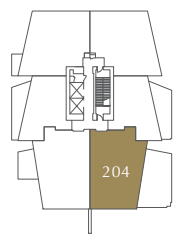
- 1 Premium Miele full-size kitchen appliance package including integrated 48" side-by-side fridge and freezer
- 2 Thoughtful integrated pantry in kitchen
- 3 Spacious wrap-around deck
- 4 Natural gas connection for BBQ and/or outdoor heaters
- 5 Ensuite features in-floor radiant heating and vanity cabinet behind mirrors provides additional storage space
- 6 Practical den ideal for a home office
- 7 Wrap-around expansive windows in the living room and kitchen
- 8 Laundry room features full-size washer and dryer, sink, lengthy countertop space with cabinet and shelving for additional storage
- 9 Grand entry foyer with oversized closet ideal for storing golf clubs, luggage and other large storage items



LEVELS 4-14



LEVEL 3



LEVEL 2

FOSTER STREET »»



Unit numbering and floor numbers are currently subject to change, pending approval by the City of White Rock. If discrepancies occur, the unit number on the contract of purchase and sale will be deemed to be correct. In our continuing effort to improve and maintain the high standard of the Foster Martin development, the developer reserves the right to modify or change plans, specifications, features and prices without notice. All dimensions and areas are approximate and are based on Architectural measurements. Windows, columns, privacy screens, demising walls may vary depending upon the plan and floor level. Please see disclosure statement for specific offering details. E.&O.E.



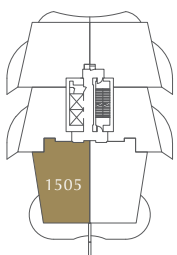
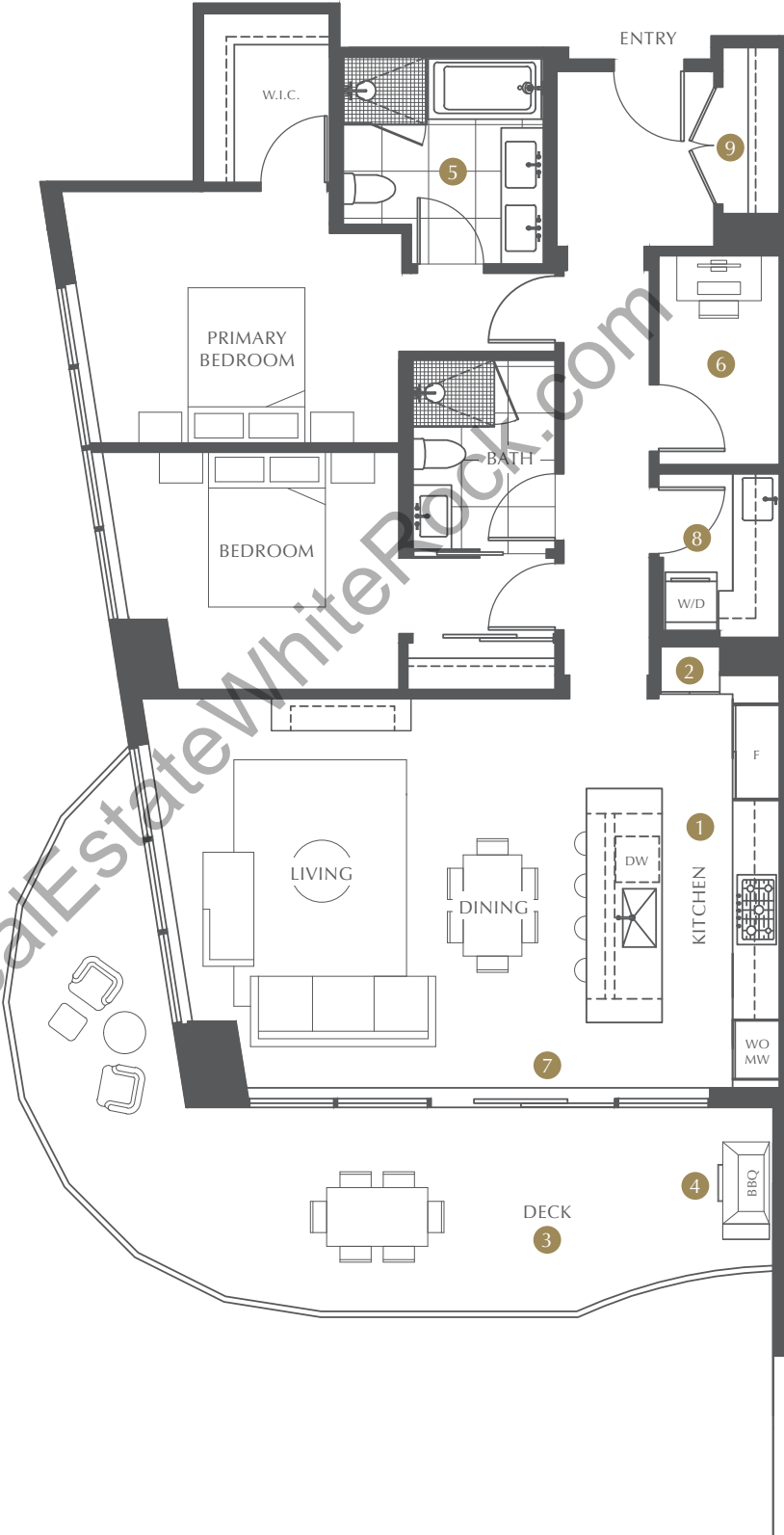
# THE LANDMARK AT FOSTER · MARTIN

# A1 WEST

2 BEDROOM & DEN  
2 BATHROOM

INTERIOR	1,295 SQ FT
EXTERIOR	326 SQ FT
TOTAL	1,621 SQ FT

- 1 Premium Miele full-size kitchen appliance package including integrated 48" side-by-side fridge and freezer
- 2 Thoughtful integrated pantry in kitchen
- 3 Spacious wrap-around deck
- 4 Natural gas connection for BBQ and/or outdoor heaters
- 5 Ensuite features in-floor radiant heating and vanity cabinet behind mirrors provides additional storage space
- 6 Practical den ideal for a home office
- 7 Wrap-around expansive windows in the living room and kitchen
- 8 Laundry room features full-size washer and dryer, sink, lengthy countertop space with cabinet and shelving for additional storage
- 9 Grand entry foyer with oversized closet ideal for storing golf clubs, luggage and other large storage items



LEVEL 15



Unit numbering and floor numbers are currently subject to change, pending approval by the City of White Rock. If discrepancies occur, the unit number on the contract of purchase and sale will be deemed to be correct. In our continuing effort to improve and maintain the high standard of the Foster Martin development, the developer reserves the right to modify or change plans, specifications, features and prices without notice. All dimensions and areas are approximate and are based on Architectural measurements. Windows, columns, privacy screens, demising walls may vary depending upon the plan and floor level. Please see disclosure statement for specific offering details. E.&O.E.



# THE LANDMARK

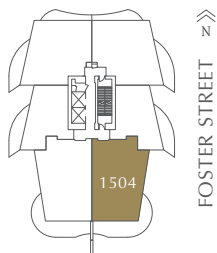
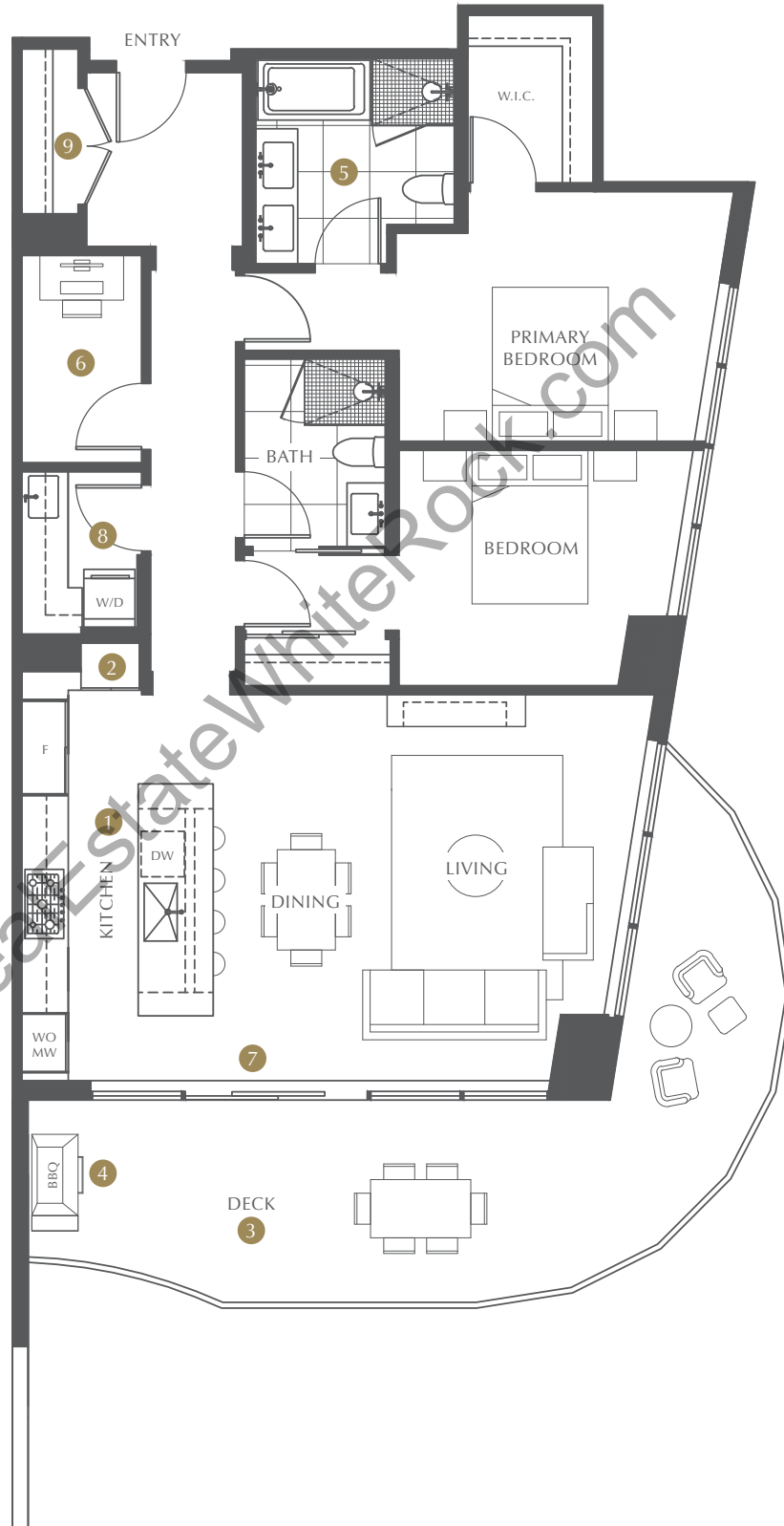
AT FOSTER · MARTIN

# A1 EAST

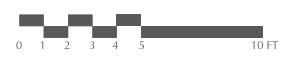
2 BEDROOM & DEN  
2 BATHROOM

INTERIOR	1,295 SQ FT
EXTERIOR	326 SQ FT
TOTAL	1,621 SQ FT

- 1 Premium Miele full-size kitchen appliance package including integrated 48" side-by-side fridge and freezer
- 2 Thoughtful integrated pantry in kitchen
- 3 Spacious wrap-around deck
- 4 Natural gas connection for BBQ and/or outdoor heaters
- 5 Ensuite features in-floor radiant heating and vanity cabinet behind mirrors provides additional storage space
- 6 Practical den ideal for a home office
- 7 Wrap-around expansive windows in the living room and kitchen
- 8 Laundry room features full-size washer and dryer, sink, lengthy countertop space with cabinet and shelving for additional storage
- 9 Grand entry foyer with oversized closet ideal for storing golf clubs, luggage and other large storage items



LEVEL 15



Unit numbering and floor numbers are currently subject to change, pending approval by the City of White Rock. If discrepancies occur, the unit number on the contract of purchase and sale will be deemed to be correct. In our continuing effort to improve and maintain the high standard of the Foster Martin development, the developer reserves the right to modify or change plans, specifications, features and prices without notice. All dimensions and areas are approximate and are based on Architectural measurements. Windows, columns, privacy screens, demising walls may vary depending upon the plan and floor level. Please see disclosure statement for specific offering details. E.&O.E.



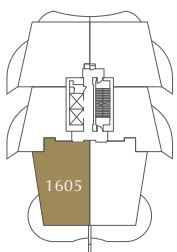
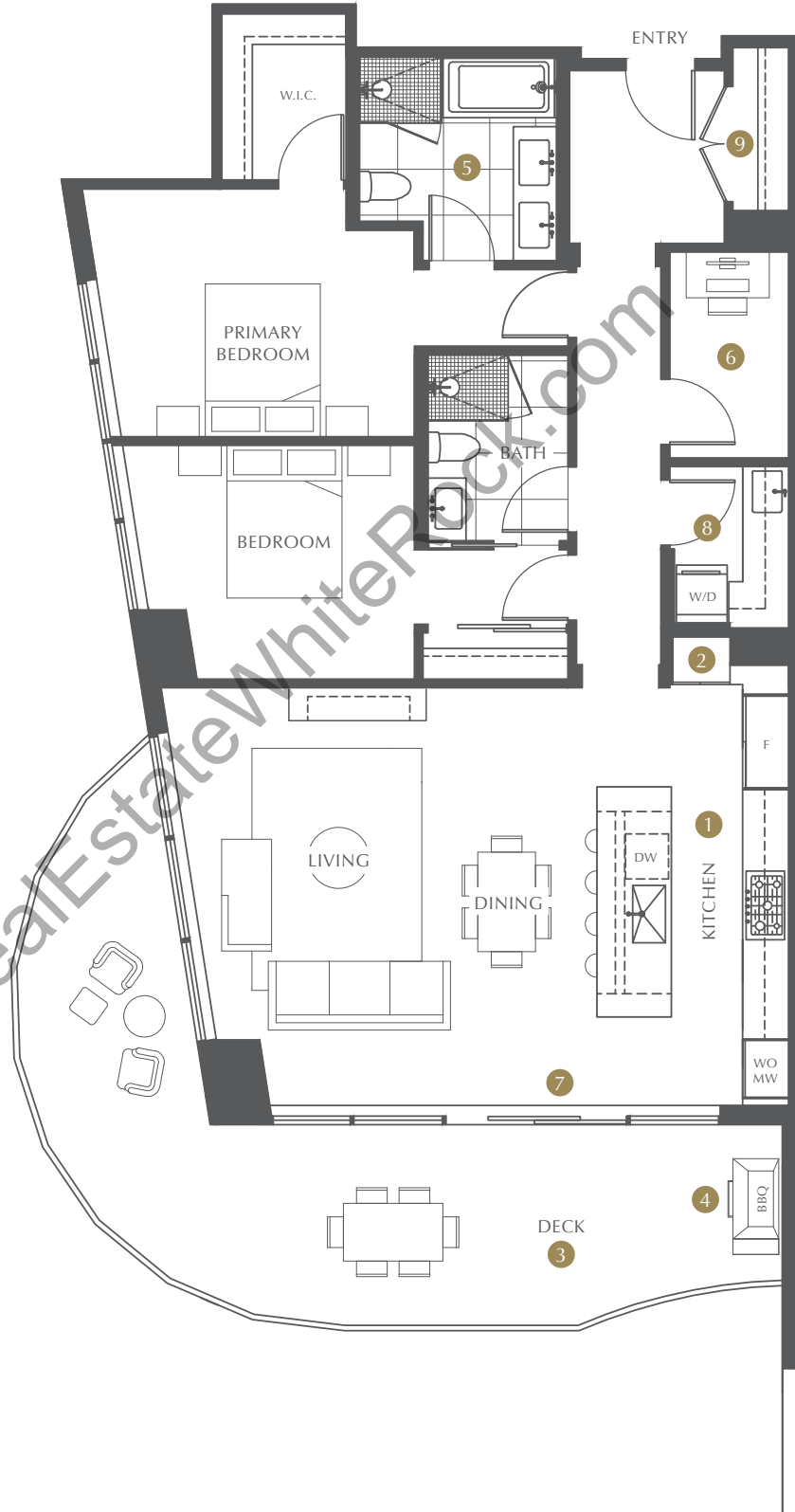
# THE LANDMARK AT FOSTER · MARTIN

## A2 WEST

2 BEDROOM & DEN  
2 BATHROOM

INTERIOR	1,334 SQ FT
EXTERIOR	346 SQ FT
TOTAL	1,680 SQ FT

- 1 Premium Miele full-size kitchen appliance package including integrated 48" side-by-side fridge and freezer
- 2 Thoughtful integrated pantry in kitchen
- 3 Spacious wrap-around deck
- 4 Natural gas connection for BBQ and/or outdoor heaters
- 5 Ensuite features in-floor radiant heating and vanity cabinet behind mirrors provides additional storage space
- 6 Practical den ideal for a home office
- 7 Wrap-around expansive windows in the living room and kitchen
- 8 Laundry room features full-size washer and dryer, sink, lengthy countertop space with cabinet and shelving for additional storage
- 9 Grand entry foyer with oversized closet ideal for storing golf clubs, luggage and other large storage items



LEVEL 16



Unit numbering and floor numbers are currently subject to change, pending approval by the City of White Rock. If discrepancies occur, the unit number on the contract of purchase and sale will be deemed to be correct. In our continuing effort to improve and maintain the high standard of the Foster Martin development, the developer reserves the right to modify or change plans, specifications, features and prices without notice. All dimensions and areas are approximate and are based on Architectural measurements. Windows, columns, privacy screens, demising walls may vary depending upon the plan and floor level. Please see disclosure statement for specific offering details. E.&O.E.



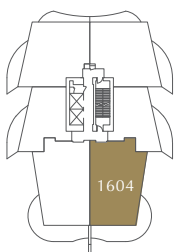
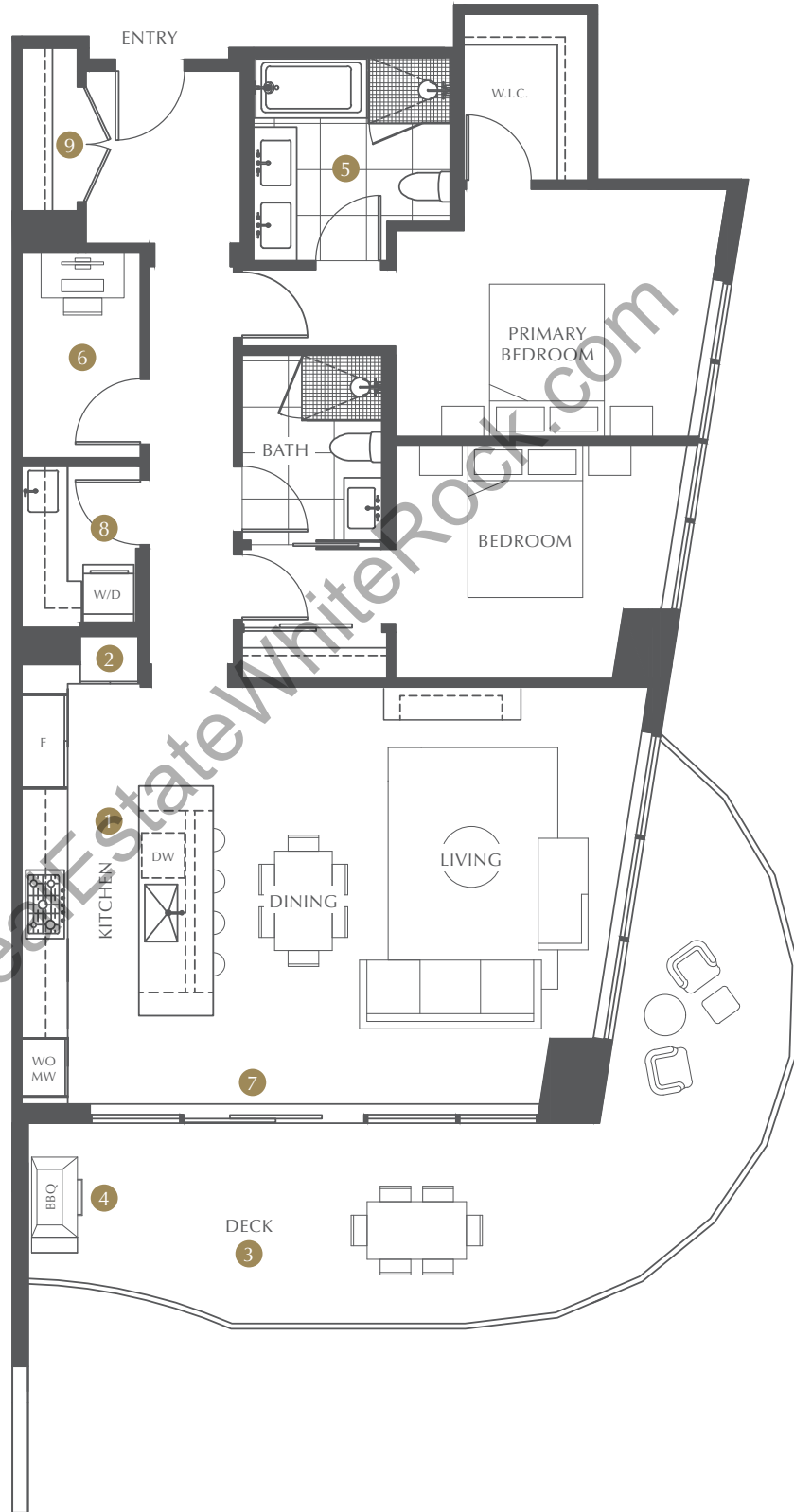
# THE LANDMARK AT FOSTER · MARTIN

## A2 EAST

2 BEDROOM & DEN  
2 BATHROOM

INTERIOR	1,334 SQ FT
EXTERIOR	346 SQ FT
TOTAL	1,680 SQ FT

- 1 Premium Miele full-size kitchen appliance package including integrated 48" side-by-side fridge and freezer
- 2 Thoughtful integrated pantry in kitchen
- 3 Spacious wrap-around deck
- 4 Natural gas connection for BBQ and/or outdoor heaters
- 5 Ensuite features in-floor radiant heating and vanity cabinet behind mirrors provides additional storage space
- 6 Practical den ideal for a home office
- 7 Wrap-around expansive windows in the living room and kitchen
- 8 Laundry room features full-size washer and dryer, sink, lengthy countertop space with cabinet and shelving for additional storage
- 9 Grand entry foyer with oversized closet ideal for storing golf clubs, luggage and other large storage items



LEVEL 16



Unit numbering and floor numbers are currently subject to change, pending approval by the City of White Rock. If discrepancies occur, the unit number on the contract of purchase and sale will be deemed to be correct. In our continuing effort to improve and maintain the high standard of the Foster Martin development, the developer reserves the right to modify or change plans, specifications, features and prices without notice. All dimensions and areas are approximate and are based on Architectural measurements. Windows, columns, privacy screens, demising walls may vary depending upon the plan and floor level. Please see disclosure statement for specific offering details. E.&O.E.



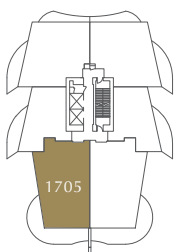
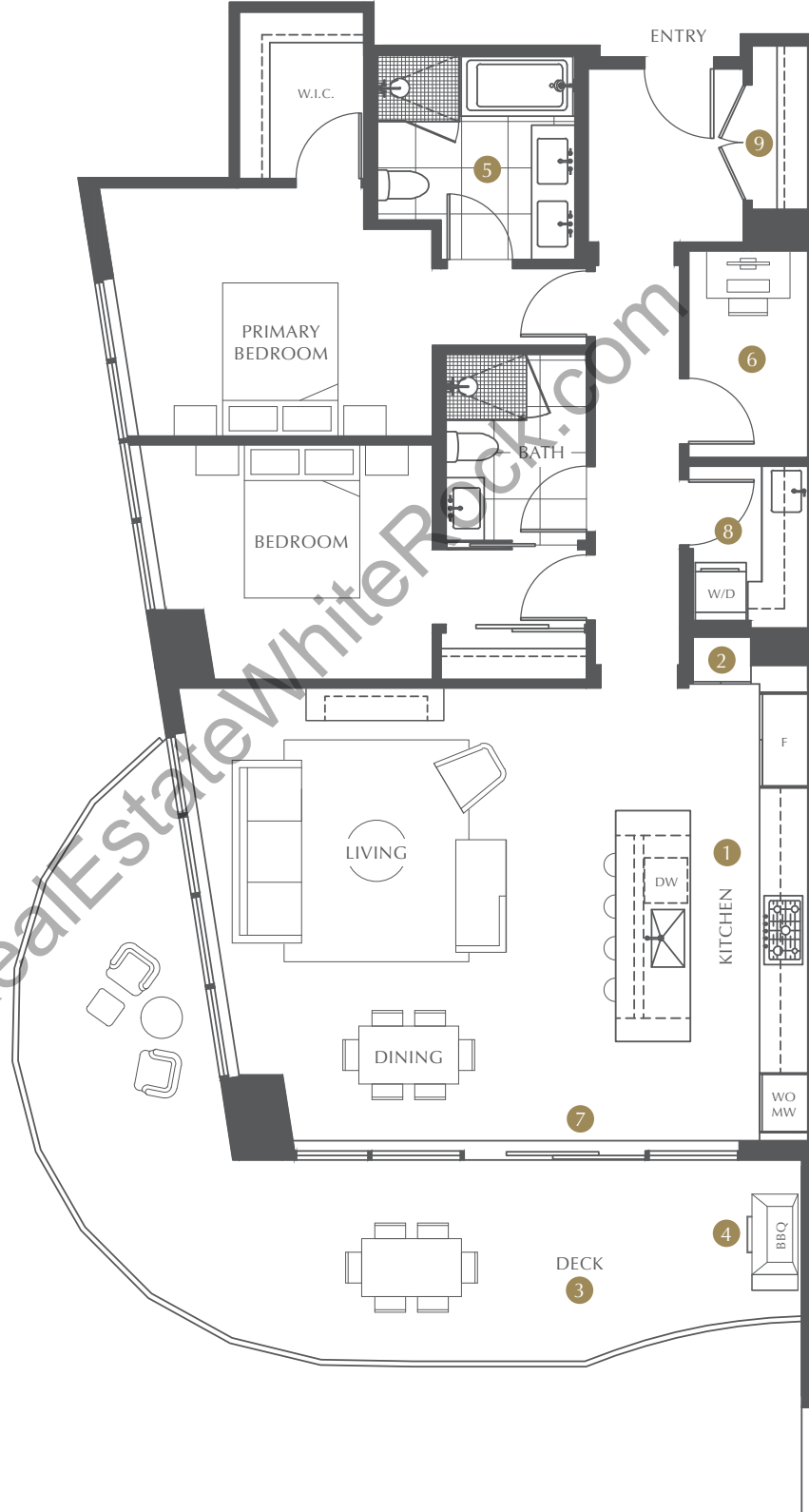
# THE LANDMARK AT FOSTER · MARTIN

# A3 WEST

2 BEDROOM & DEN  
2 BATHROOM

INTERIOR	1,371 SQ FT
EXTERIOR	369 SQ FT
TOTAL	1,740 SQ FT

- 1 Premium Miele full-size kitchen appliance package including integrated 48" side-by-side fridge and freezer
- 2 Thoughtful integrated pantry in kitchen
- 3 Spacious wrap-around deck
- 4 Natural gas connection for BBQ and/or outdoor heaters
- 5 Ensuite features in-floor radiant heating and vanity cabinet behind mirrors provides additional storage space
- 6 Practical den ideal for a home office
- 7 Wrap-around expansive windows in the living room and kitchen
- 8 Laundry room features full-size washer and dryer, sink, lengthy countertop space with cabinet and shelving for additional storage
- 9 Grand entry foyer with oversized closet ideal for storing golf clubs, luggage and other large storage items



FOSTER STREET »

LEVEL 17



Unit numbering and floor numbers are currently subject to change, pending approval by the City of White Rock. If discrepancies occur, the unit number on the contract of purchase and sale will be deemed to be correct. In our continuing effort to improve and maintain the high standard of the Foster Martin development, the developer reserves the right to modify or change plans, specifications, features and prices without notice. All dimensions and areas are approximate and are based on Architectural measurements. Windows, columns, privacy screens, demising walls may vary depending upon the plan and floor level. Please see disclosure statement for specific offering details. E.&O.E.



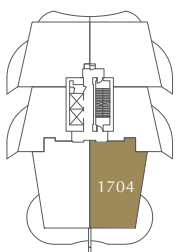
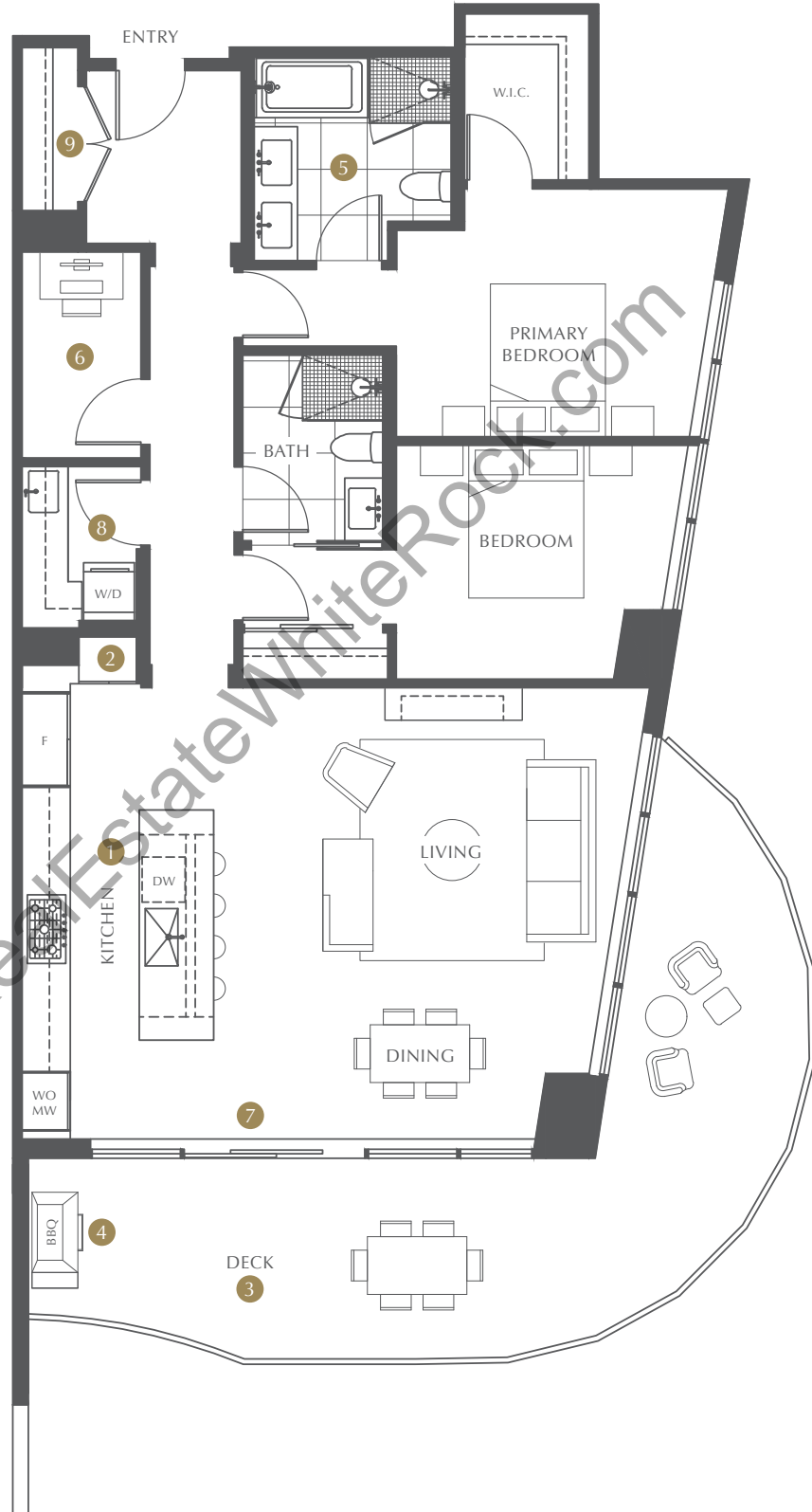
# THE LANDMARK AT FOSTER · MARTIN

# A3 EAST

2 BEDROOM & DEN  
2 BATHROOM

INTERIOR	1,371 SQ FT
EXTERIOR	369 SQ FT
TOTAL	1,740 SQ FT

- 1 Premium Miele full-size kitchen appliance package including integrated 48" side-by-side fridge and freezer
- 2 Thoughtful integrated pantry in kitchen
- 3 Spacious wrap-around deck
- 4 Natural gas connection for BBQ and/or outdoor heaters
- 5 Ensuite features in-floor radiant heating and vanity cabinet behind mirrors provides additional storage space
- 6 Practical den ideal for a home office
- 7 Wrap-around expansive windows in the living room and kitchen
- 8 Laundry room features full-size washer and dryer, sink, lengthy countertop space with cabinet and shelving for additional storage
- 9 Grand entry foyer with oversized closet ideal for storing golf clubs, luggage and other large storage items



LEVEL 17



Unit numbering and floor numbers are currently subject to change, pending approval by the City of White Rock. If discrepancies occur, the unit number on the contract of purchase and sale will be deemed to be correct. In our continuing effort to improve and maintain the high standard of the Foster Martin development, the developer reserves the right to modify or change plans, specifications, features and prices without notice. All dimensions and areas are approximate and are based on Architectural measurements. Windows, columns, privacy screens, demising walls may vary depending upon the plan and floor level. Please see disclosure statement for specific offering details. E.&O.E.





# THE LANDMARK

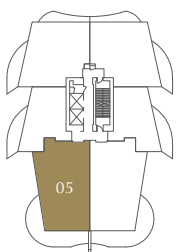
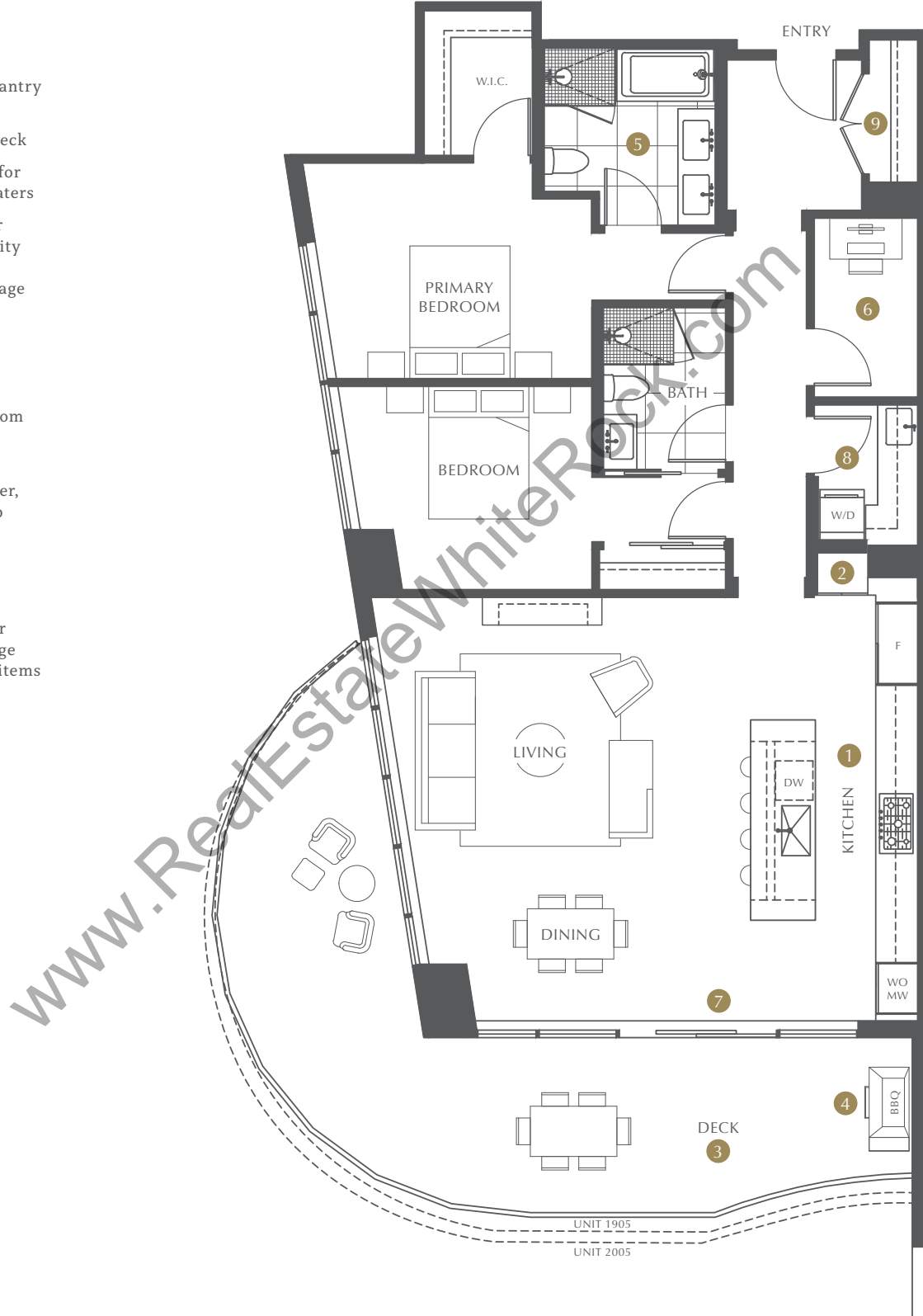
AT FOSTER · MARTIN

# A4 WEST

2 BEDROOM & DEN  
2 BATHROOM

INTERIOR	1,409 SQ FT
EXTERIOR	394-458 SQ FT
TOTAL	1,803-1,867 SQ FT

- 1 Premium Miele full-size kitchen appliance package including integrated 48" side-by-side fridge and freezer
- 2 Thoughtful integrated pantry in kitchen
- 3 Spacious wrap-around deck
- 4 Natural gas connection for BBQ and/or outdoor heaters
- 5 Ensuite features in-floor radiant heating and vanity cabinet behind mirrors provides additional storage space
- 6 Practical den ideal for a home office
- 7 Wrap-around expansive windows in the living room and kitchen
- 8 Laundry room features full-size washer and dryer, sink, lengthy countertop space with cabinet and shelving for additional storage
- 9 Grand entry foyer with oversized closet ideal for storing golf clubs, luggage and other large storage items



FOSTER STREET »

LEVELS 18-20



Unit numbering and floor numbers are currently subject to change, pending approval by the City of White Rock. If discrepancies occur, the unit number on the contract of purchase and sale will be deemed to be correct. In our continuing effort to improve and maintain the high standard of the Foster Martin development, the developer reserves the right to modify or change plans, specifications, features and prices without notice. All dimensions and areas are approximate and are based on Architectural measurements. Windows, columns, privacy screens, demising walls may vary depending upon the plan and floor level. Please see disclosure statement for specific offering details. E.&O.E.



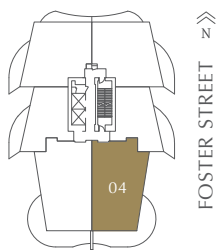
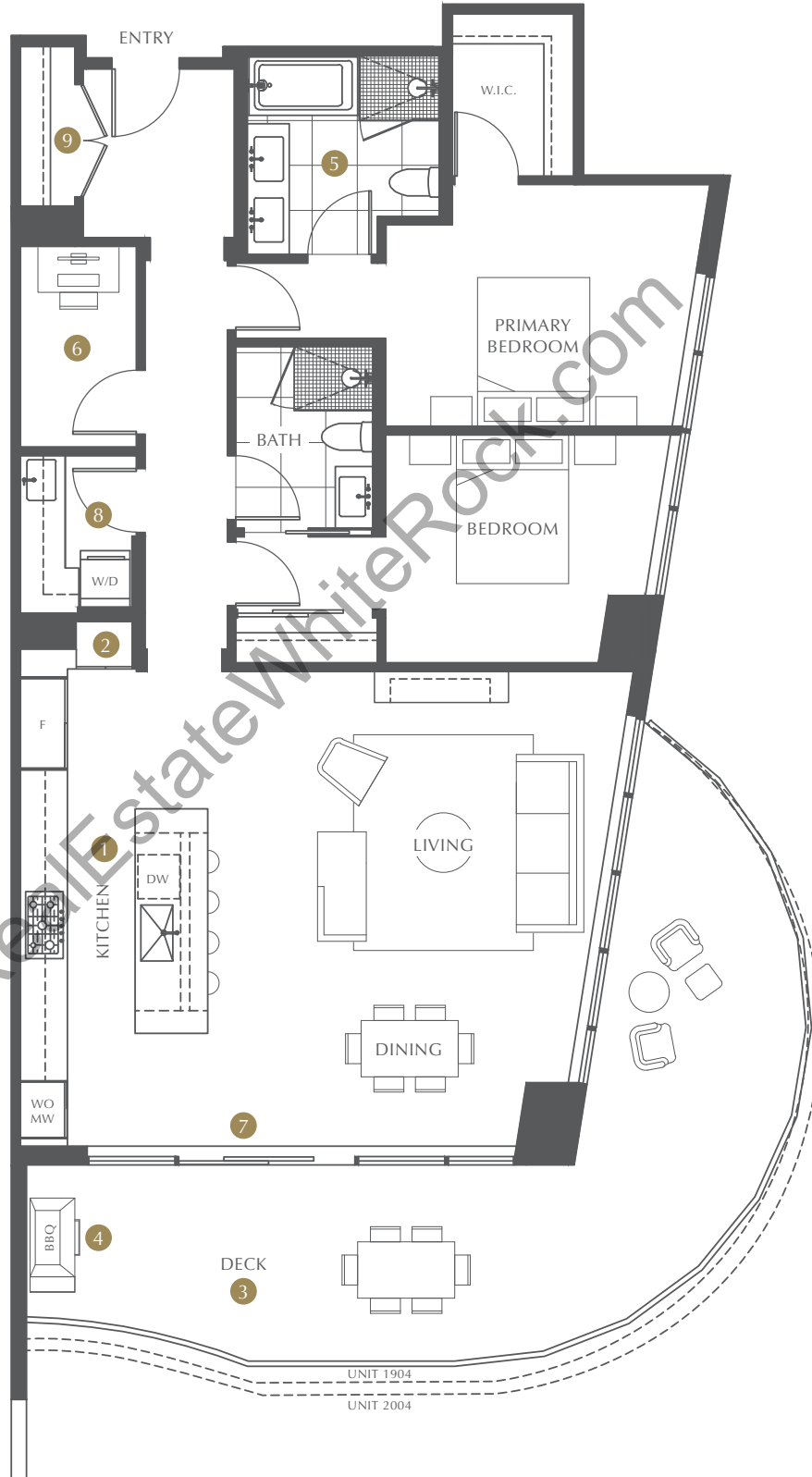
# THE LANDMARK AT FOSTER · MARTIN

# A4 EAST

2 BEDROOM & DEN  
2 BATHROOM

INTERIOR	1,409 SQ FT
EXTERIOR	394-458 SQ FT
TOTAL	1,803-1,867 SQ FT

- 1 Premium Miele full-size kitchen appliance package including integrated 48" side-by-side fridge and freezer
- 2 Thoughtful integrated pantry in kitchen
- 3 Spacious wrap-around deck
- 4 Natural gas connection for BBQ and/or outdoor heaters
- 5 Ensuite features in-floor radiant heating and vanity cabinet behind mirrors provides additional storage space
- 6 Practical den ideal for a home office
- 7 Wrap-around expansive windows in the living room and kitchen
- 8 Laundry room features full-size washer and dryer, sink, lengthy countertop space with cabinet and shelving for additional storage
- 9 Grand entry foyer with oversized closet ideal for storing golf clubs, luggage and other large storage items



LEVELS 18-20



Unit numbering and floor numbers are currently subject to change, pending approval by the City of White Rock. If discrepancies occur, the unit number on the contract of purchase and sale will be deemed to be correct. In our continuing effort to improve and maintain the high standard of the Foster Martin development, the developer reserves the right to modify or change plans, specifications, features and prices without notice. All dimensions and areas are approximate and are based on Architectural measurements. Windows, columns, privacy screens, demising walls may vary depending upon the plan and floor level. Please see disclosure statement for specific offering details. E.&O.E.



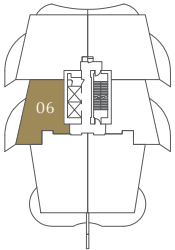
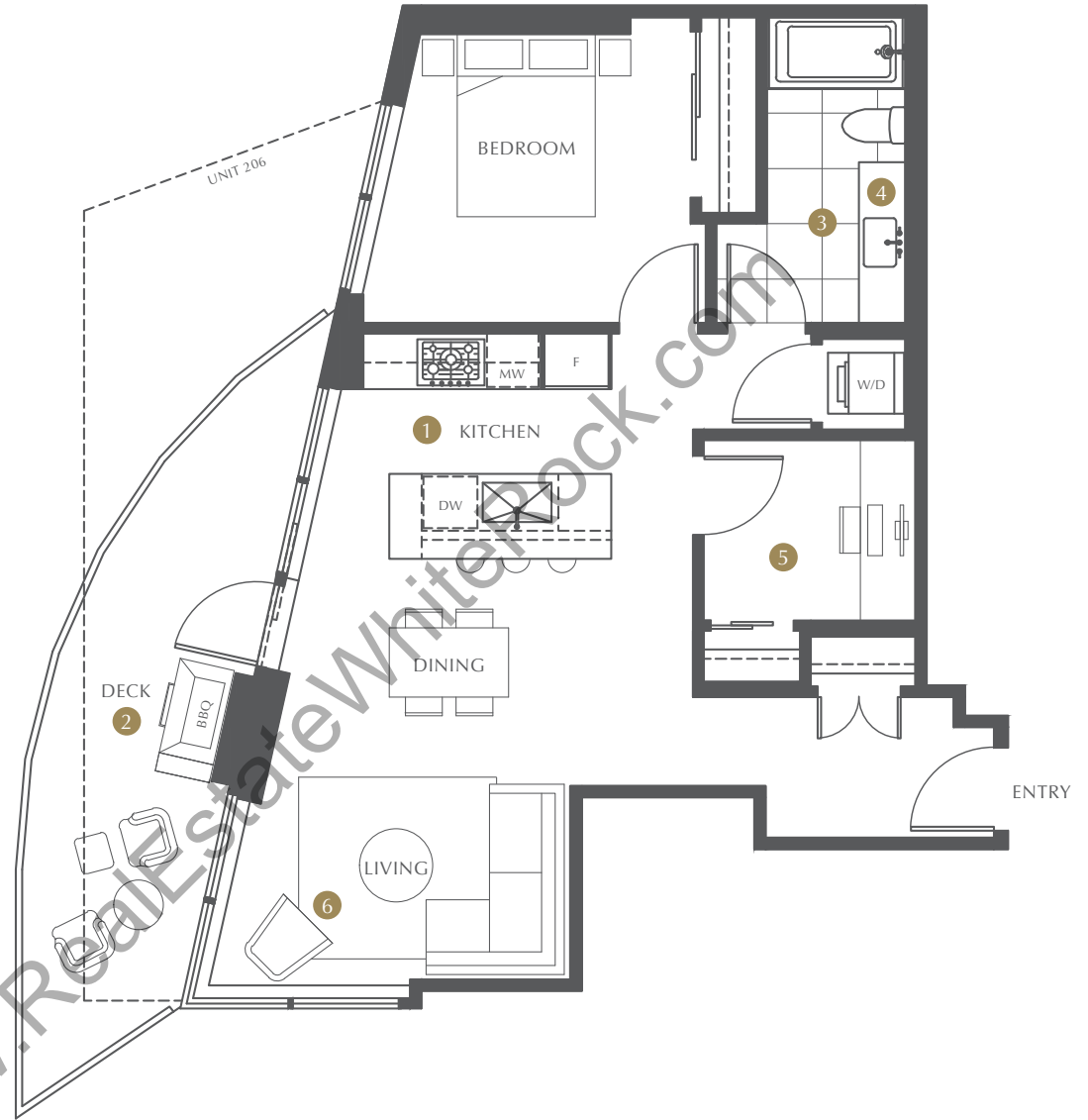
# THE LANDMARK AT FOSTER · MARTIN

# B WEST

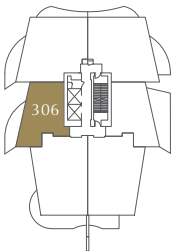
1 BEDROOM & FLEX  
1 BATHROOM

INTERIOR	753 SQ FT
EXTERIOR	158-240 SQ FT
TOTAL	911-993 SQ FT

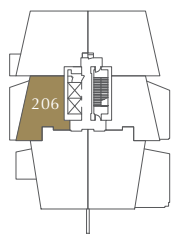
- 1 Premium Miele 30" kitchen appliance package
- 2 Natural gas connection on the deck for BBQ and/or outdoor heaters
- 3 In-floor radiant heating in bathroom to maximize comfort
- 4 Extended countertops in bathroom with medicine cabinet behind mirrors for additional storage space
- 5 Functional flex room with private closet, ideal for home office
- 6 Floor-to-ceiling height south-facing windows to fully capture sea views



LEVELS 4-20



LEVEL 3



LEVEL 2

FOSTER STREET »

WWW.RealstateWriterRock.com



Unit numbering and floor numbers are currently subject to change, pending approval by the City of White Rock. If discrepancies occur, the unit number on the contract of purchase and sale will be deemed to be correct. In our continuing effort to improve and maintain the high standard of the Foster Martin development, the developer reserves the right to modify or change plans, specifications, features and prices without notice. All dimensions and areas are approximate and are based on Architectural measurements. Windows, columns, privacy screens, demising walls may vary depending upon the plan and floor level. Please see disclosure statement for specific offering details. E.&O.E.



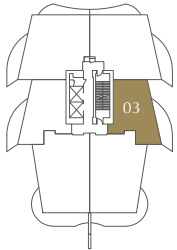
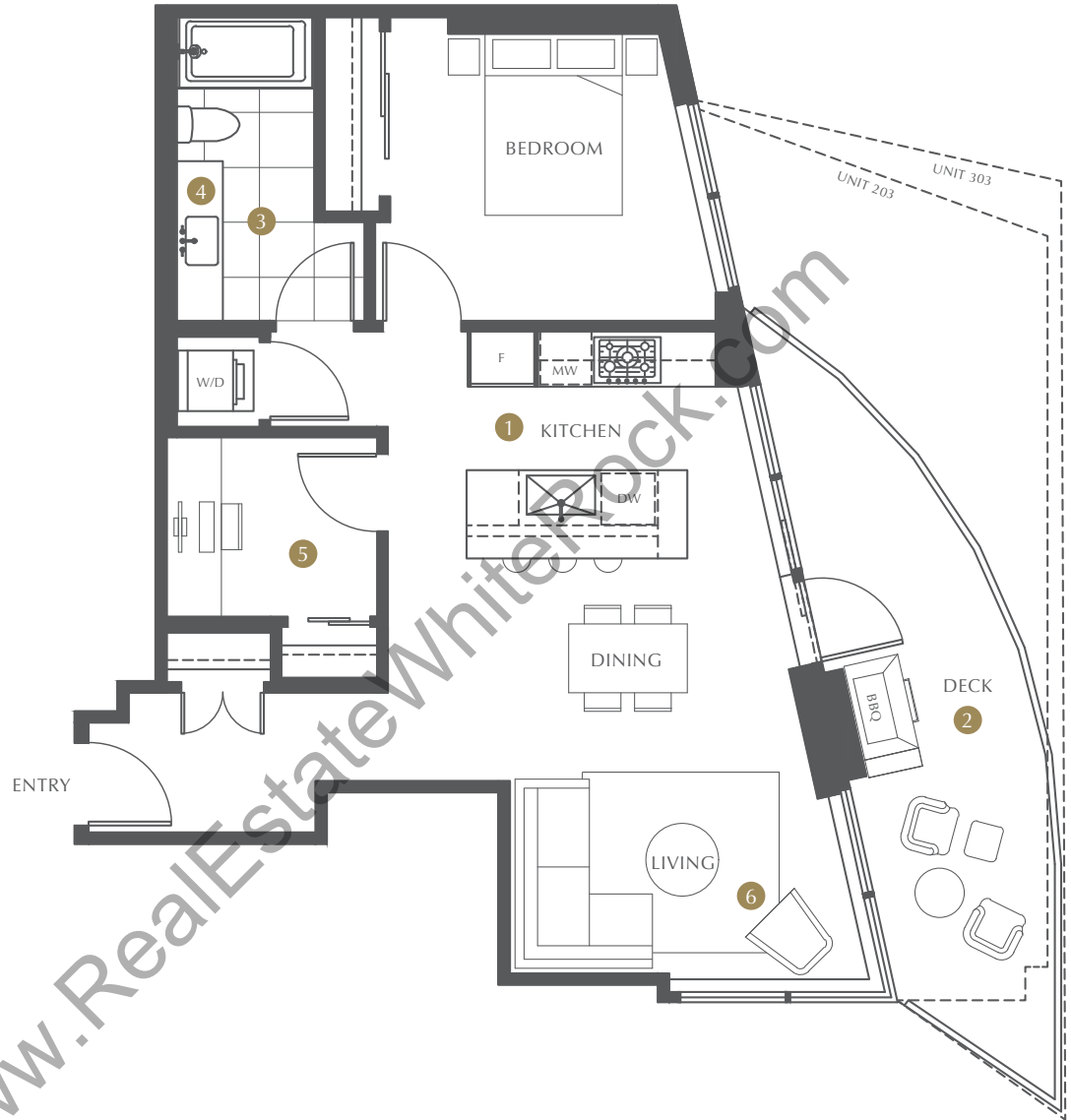
# THE LANDMARK AT FOSTER · MARTIN

# B EAST

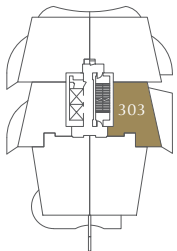
1 BEDROOM & FLEX  
1 BATHROOM

INTERIOR	753 SQ FT
EXTERIOR	158-340 SQ FT
TOTAL	911-1,093 SQ FT

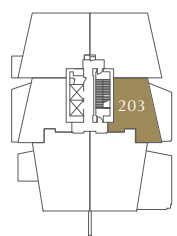
- 1 Premium Miele 30" kitchen appliance package
- 2 Natural gas connection on the deck for BBQ and/or outdoor heaters
- 3 In-floor radiant heating in bathroom to maximize comfort
- 4 Extended countertops in bathroom with medicine cabinet behind mirrors for additional storage space
- 5 Functional flex room with private closet, ideal for home office
- 6 Floor-to-ceiling height south-facing windows to fully capture sea views



LEVELS 4-20



LEVEL 3



LEVEL 2

FOSTER STREET »»



Unit numbering and floor numbers are currently subject to change, pending approval by the City of White Rock. If discrepancies occur, the unit number on the contract of purchase and sale will be deemed to be correct. In our continuing effort to improve and maintain the high standard of the Foster Martin development, the developer reserves the right to modify or change plans, specifications, features and prices without notice. All dimensions and areas are approximate and are based on Architectural measurements. Windows, columns, privacy screens, demising walls may vary depending upon the plan and floor level. Please see disclosure statement for specific offering details. E.&O.E.

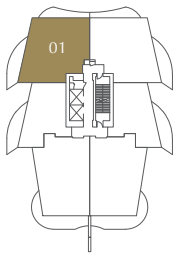
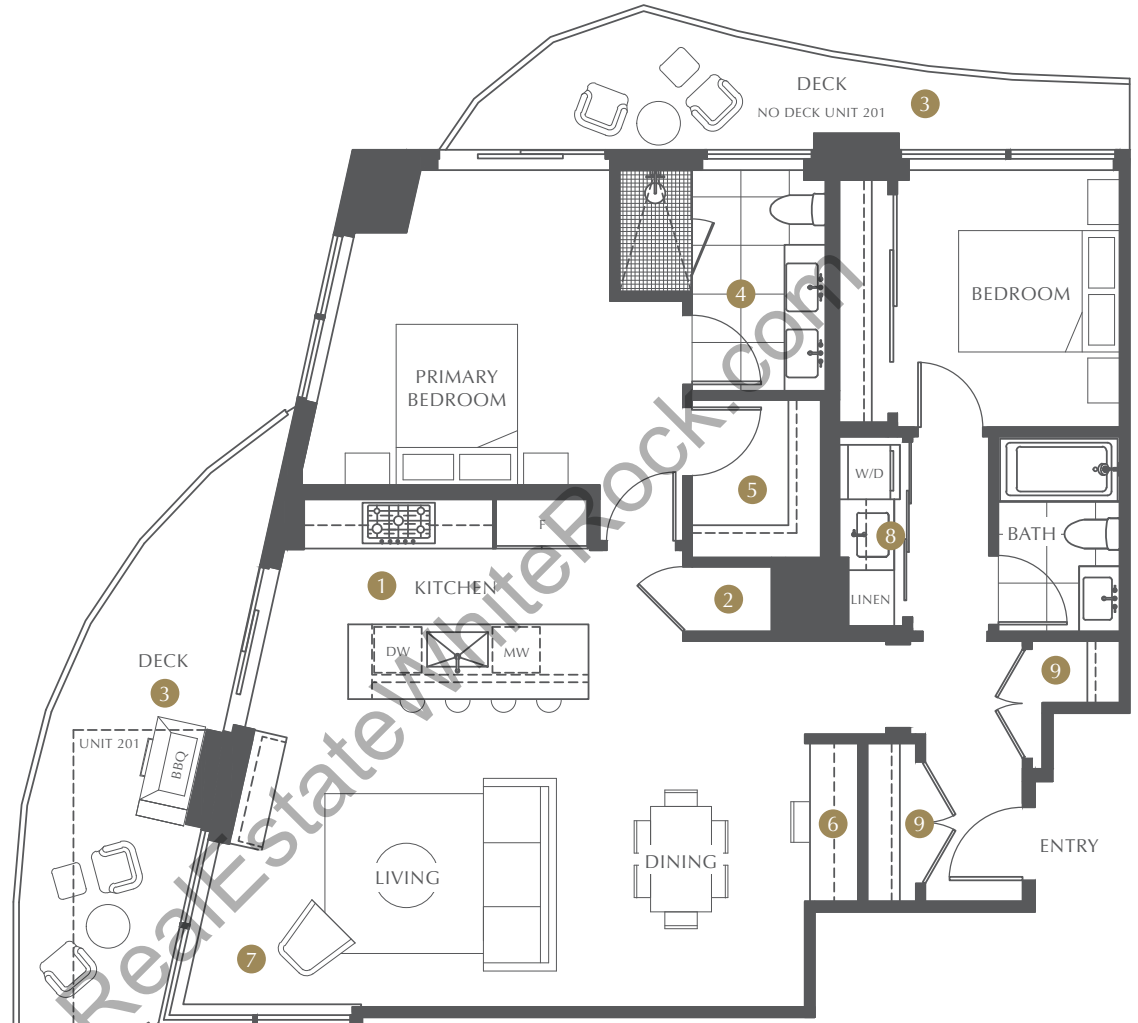


# THE LANDMARK AT FOSTER · MARTIN

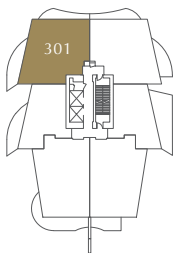
## C WEST

	INTERIOR	1,195 SQ FT
2 BEDROOM & WORKSTATION	EXTERIOR	66–263 SQ FT
2 BATHROOM	TOTAL	1,261–1,458 SQ FT

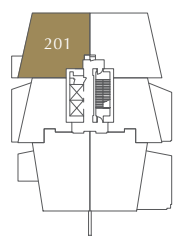
- 1 Premium Miele full-size kitchen appliance package including integrated 48" side-by-side fridge and freezer
- 2 Spacious walk-in pantry
- 3 Two private decks with one gas bib located on the deck off of the kitchen for BBQ and/or outdoor heaters
- 4 Ensuite features in-floor radiant heating and vanity cabinet behind mirrors provides additional storage space
- 5 Large walk-in closet in primary bedroom
- 6 Thoughtful nook for home office and/or hobby station
- 7 Floor-to-ceiling height south-facing windows to fully capture sea views
- 8 Full-size washer and dryer with sink and linen closet
- 9 Two entry closets for additional storage space



LEVELS 4–20



LEVEL 3



LEVEL 2

FOSTER STREET »»

Unit numbering and floor numbers are currently subject to change, pending approval by the City of White Rock. If discrepancies occur, the unit number on the contract of purchase and sale will be deemed to be correct. In our continuing effort to improve and maintain the high standard of the Foster Martin development, the developer reserves the right to modify or change plans, specifications, features and prices without notice. All dimensions and areas are approximate and are based on Architectural measurements. Windows, columns, privacy screens, demising walls may vary depending upon the plan and floor level. Please see disclosure statement for specific offering details. E.&O.E.



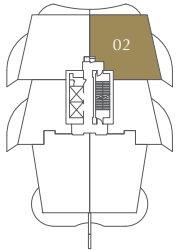
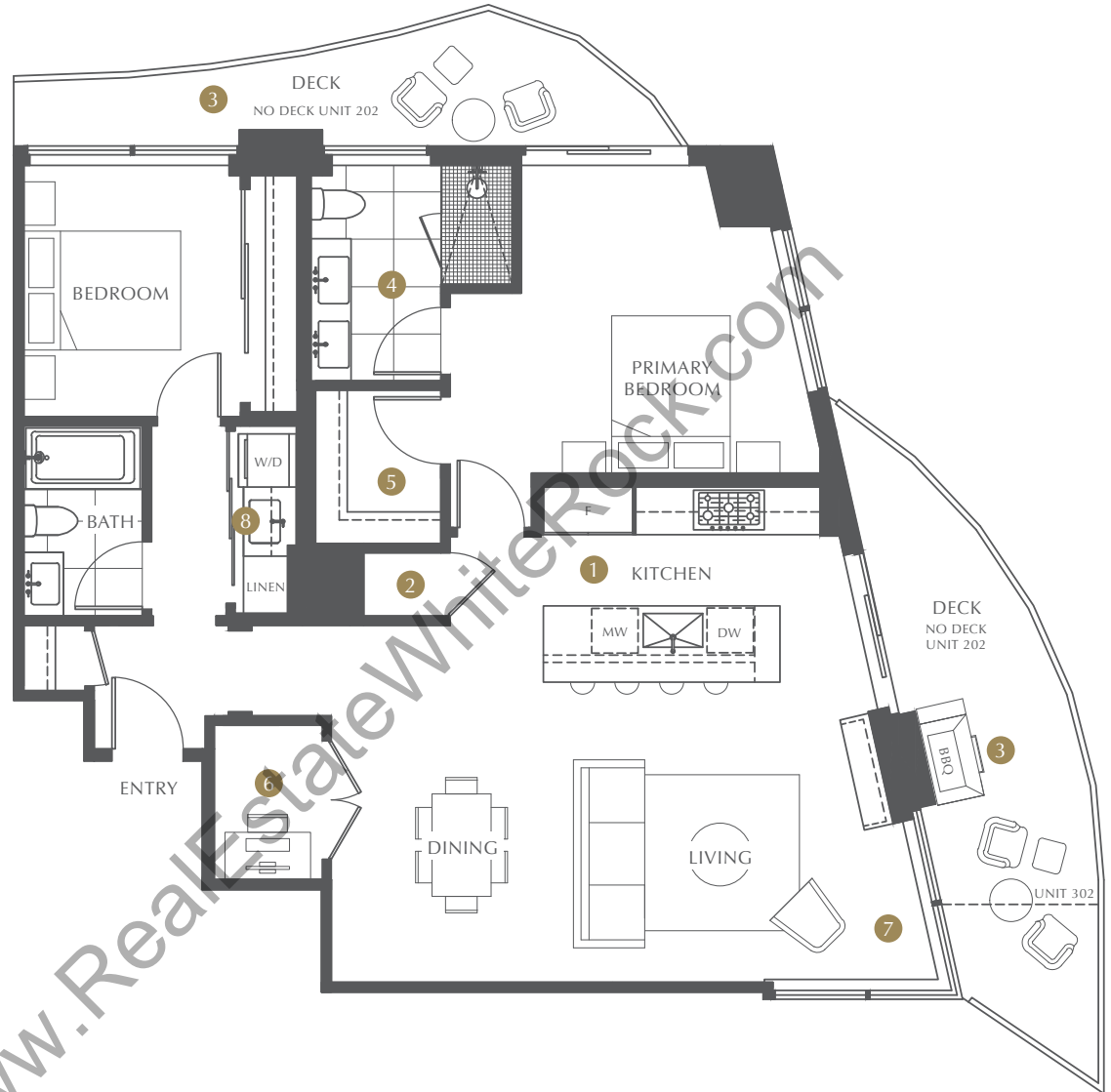
# THE LANDMARK AT FOSTER · MARTIN

# C EAST

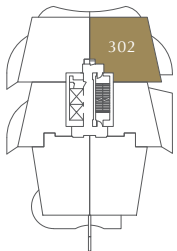
2 BEDROOM & DEN  
2 BATHROOM

INTERIOR	1,173 SQ FT
EXTERIOR	0-263 SQ FT
TOTAL	1,173-1,436 SQ FT

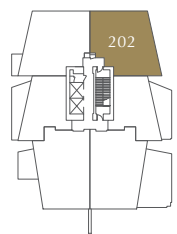
- 1 Premium Miele full-size kitchen appliance package including integrated 48" side-by-side fridge and freezer
- 2 Spacious walk-in pantry
- 3 Two private decks with one gas bib located on the deck off of the kitchen for BBQ and/or outdoor heaters
- 4 Ensuite features in-floor radiant heating and vanity cabinet behind mirrors provides additional storage space
- 5 Large walk-in closet in primary bedroom
- 6 Practical den ideal for a home office
- 7 Floor-to-ceiling height south-facing windows to fully capture sea views
- 8 Full-size washer and dryer with sink and linen closet



LEVELS 4-20



LEVEL 3



LEVEL 2

FOSTER STREET »»

www.RealtyStateWriterRock.com



Unit numbering and floor numbers are currently subject to change, pending approval by the City of White Rock. If discrepancies occur, the unit number on the contract of purchase and sale will be deemed to be correct. In our continuing effort to improve and maintain the high standard of the Foster Martin development, the developer reserves the right to modify or change plans, specifications, features and prices without notice. All dimensions and areas are approximate and are based on Architectural measurements. Windows, columns, privacy screens, demising walls may vary depending upon the plan and floor level. Please see disclosure statement for specific offering details. E.&O.E.



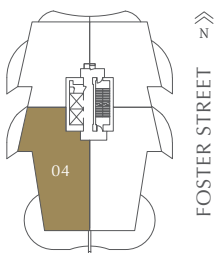
# THE LANDMARK AT FOSTER · MARTIN

## D WEST

3 BEDROOM & DEN  
3 BATHROOM

INTERIOR	1,964 SQ FT
EXTERIOR	617 SQ FT
TOTAL	2,581 SQ FT

- 1 Premium Miele full-size kitchen appliance package including integrated 48" side-by-side fridge and freezer
- 2 Extended quartz countertop space and spacious lower cabinet drawers
- 3 Two large integrated pantry cabinets
- 4 Two private decks with one gas bib located on the deck off of the kitchen for BBQ and/or outdoor heater
- 5 Primary ensuite includes in-floor radiant heating, large windows to be enjoyed from the luxurious soaker tub. Vanity cabinet behind mirrors provides additional storage space.
- 6 Spacious dual walk-in-closets in primary bedroom
- 7 Practical and spacious den
- 8 Wrap-around full-length windows in the living room, kitchen and primary bedroom
- 9 Spacious laundry room features full-size side-by-side washer and dryer, sink and quartz countertop with additional cabinet and shelving for storage



LEVELS 21-22



Unit numbering and floor numbers are currently subject to change, pending approval by the City of White Rock. If discrepancies occur, the unit number on the contract of purchase and sale will be deemed to be correct. In our continuing effort to improve and maintain the high standard of the Foster Martin development, the developer reserves the right to modify or change plans, specifications, features and prices without notice. All dimensions and areas are approximate and are based on Architectural measurements. Windows, columns, privacy screens, demising walls may vary depending upon the plan and floor level. Please see disclosure statement for specific offering details. E.&O.E.



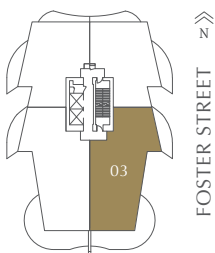
**THE LANDMARK**  
AT FOSTER · MARTIN

# D1 EAST

3 BEDROOM & DEN  
3 BATHROOM

INTERIOR	1,941 SQ FT
EXTERIOR	617 SQ FT
<b>TOTAL</b>	<b>2,558 SQ FT</b>

- 1 Premium Miele full-size kitchen appliance package including integrated 48" side-by-side fridge and freezer
- 2 Extended quartz countertop space and spacious lower cabinet drawers
- 3 Two large integrated pantry cabinets
- 4 Two private decks with one gas bib located on the deck off of the kitchen for BBQ and/or outdoor heater
- 5 Primary ensuite includes in-floor radiant heating, large windows to be enjoyed from the luxurious soaker tub. Vanity cabinet behind mirrors provides additional storage space.
- 6 Spacious dual walk-in-closets in primary bedroom
- 7 Practical and spacious den
- 8 Wrap-around full-length windows in the living room, kitchen and primary bedroom
- 9 Spacious laundry room features full-size side-by-side washer and dryer, sink and quartz countertop with additional cabinet and shelving for storage



LEVELS 21-22



Unit numbering and floor numbers are currently subject to change, pending approval by the City of White Rock. If discrepancies occur, the unit number on the contract of purchase and sale will be deemed to be correct. In our continuing effort to improve and maintain the high standard of the Foster Martin development, the developer reserves the right to modify or change plans, specifications, features and prices without notice. All dimensions and areas are approximate and are based on Architectural measurements. Windows, columns, privacy screens, demising walls may vary depending upon the plan and floor level. Please see disclosure statement for specific offering details. E.&O.E.





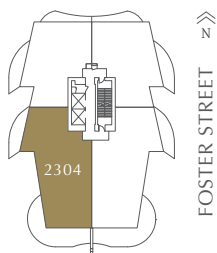
# THE LANDMARK AT FOSTER · MARTIN

# D2 WEST

3 BEDROOM & DEN  
3 BATHROOM

INTERIOR	1,927 SQ FT
EXTERIOR	617 SQ FT
TOTAL	2,544 SQ FT

- 1 Premium Miele full-size kitchen appliance package including integrated 48" side-by-side fridge and freezer
- 2 Extended quartz countertop space and spacious lower cabinet drawers
- 3 Two large integrated pantry cabinets
- 4 Two private decks with one gas bib located on the deck off of the kitchen for BBQ and/or outdoor heater
- 5 Primary ensuite includes in-floor radiant heating, large windows to be enjoyed from the luxurious soaker tub. Vanity cabinet behind mirrors provides additional storage space.
- 6 Spacious dual walk-in-closets in primary bedroom
- 7 Practical and spacious den
- 8 Wrap-around full-length windows in the living room, kitchen and primary bedroom
- 9 Spacious laundry room features full-size side-by-side washer and dryer, sink and quartz countertop with additional cabinet and shelving for storage



LEVEL 23



Unit numbering and floor numbers are currently subject to change, pending approval by the City of White Rock. If discrepancies occur, the unit number on the contract of purchase and sale will be deemed to be correct. In our continuing effort to improve and maintain the high standard of the Foster Martin development, the developer reserves the right to modify or change plans, specifications, features and prices without notice. All dimensions and areas are approximate and are based on Architectural measurements. Windows, columns, privacy screens, demising walls may vary depending upon the plan and floor level. Please see disclosure statement for specific offering details. E.&O.E.



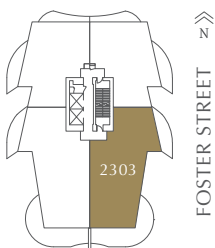
# THE LANDMARK AT FOSTER · MARTIN

# D3 EAST

3 BEDROOM & DEN  
3 BATHROOM

INTERIOR	1,903 SQ FT
EXTERIOR	617 SQ FT
TOTAL	2,520 SQ FT

- 1 Premium Miele full-size kitchen appliance package including integrated 48" side-by-side fridge and freezer
- 2 Extended quartz countertop space and spacious lower cabinet drawers
- 3 Two large integrated pantry cabinets
- 4 Two private decks with one gas bib located on the deck off of the kitchen for BBQ and/or outdoor heater
- 5 Primary ensuite includes in-floor radiant heating, large windows to be enjoyed from the luxurious soaker tub. Vanity cabinet behind mirrors provides additional storage space.
- 6 Spacious dual walk-in-closets in primary bedroom
- 7 Practical and spacious den
- 8 Wrap-around full-length windows in the living room, kitchen and primary bedroom
- 9 Spacious laundry room features full-size side-by-side washer and dryer, sink and quartz countertop with additional cabinet and shelving for storage



LEVEL 23



Unit numbering and floor numbers are currently subject to change, pending approval by the City of White Rock. If discrepancies occur, the unit number on the contract of purchase and sale will be deemed to be correct. In our continuing effort to improve and maintain the high standard of the Foster Martin development, the developer reserves the right to modify or change plans, specifications, features and prices without notice. All dimensions and areas are approximate and are based on Architectural measurements. Windows, columns, privacy screens, demising walls may vary depending upon the plan and floor level. Please see disclosure statement for specific offering details. E.&O.E.



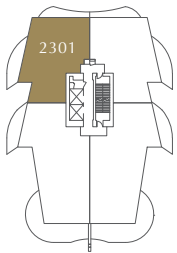
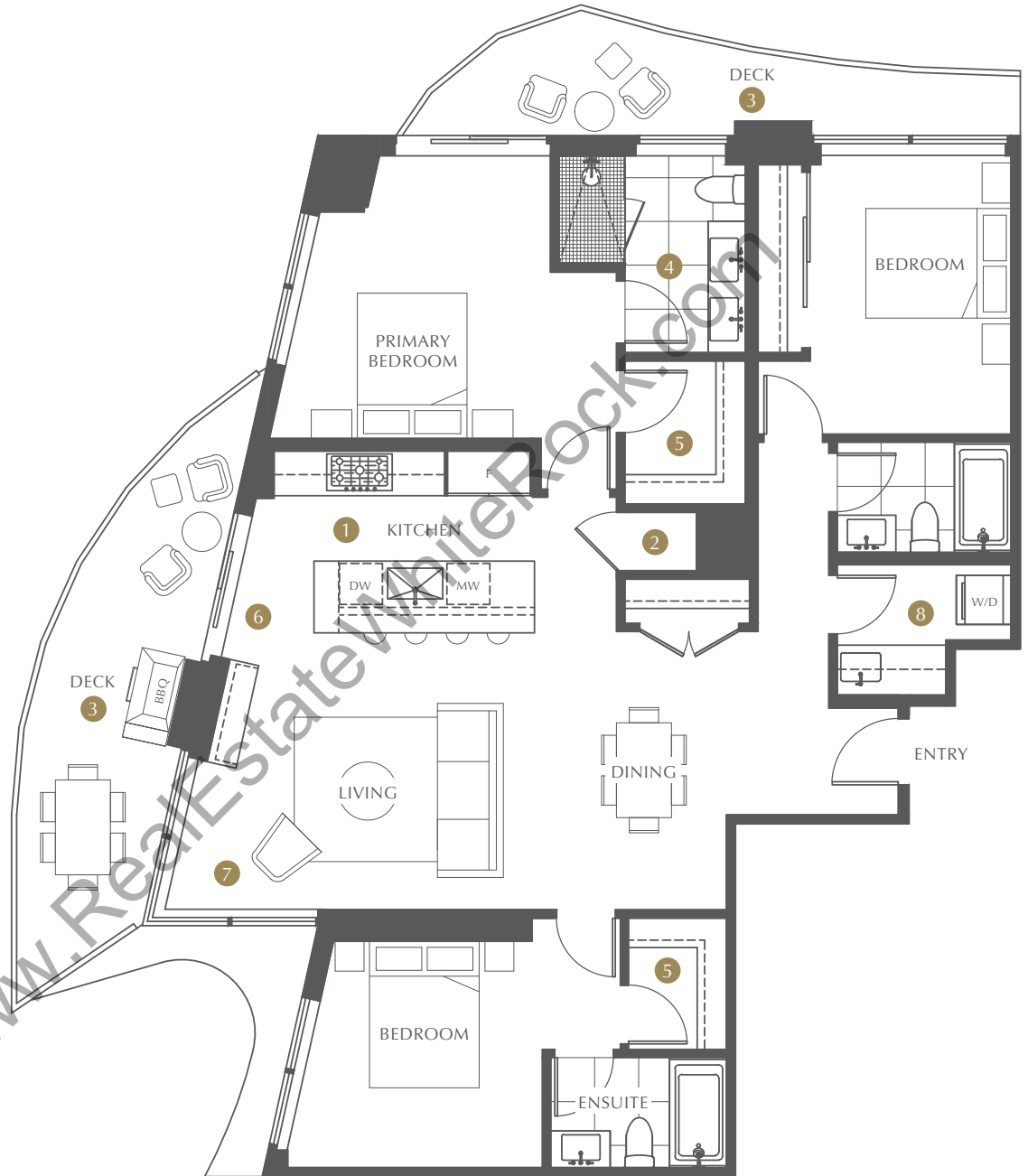
# THE LANDMARK AT FOSTER · MARTIN

# F WEST

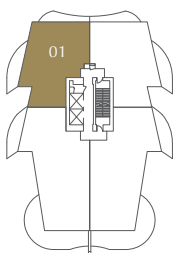
3 BEDROOM  
3 BATHROOM

INTERIOR	1,421 SQ FT
EXTERIOR	263 SQ FT
TOTAL	1,684 SQ FT

- 1 Premium Miele full-size kitchen appliance package including integrated 48" side-by-side fridge and freezer
- 2 Spacious walk-in pantry
- 3 Two private decks with one gas bib located on the deck off of the kitchen for BBQ and/or outdoor heaters
- 4 In-floor radiant heating in primary ensuite to maximize comfort
- 5 Large walk-in-closet in primary and secondary bedrooms
- 6 Wrap-around expansive windows in the living room and kitchen
- 7 Floor-to-ceiling height south-facing windows to fully capture sea views
- 8 Separate laundry room with a sink, lengthy countertop, additional storage and shelving



LEVEL 23



FOSTER STREET >>

LEVELS 21-22



Unit numbering and floor numbers are currently subject to change, pending approval by the City of White Rock. If discrepancies occur, the unit number on the contract of purchase and sale will be deemed to be correct. In our continuing effort to improve and maintain the high standard of the Foster Martin development, the developer reserves the right to modify or change plans, specifications, features and prices without notice. All dimensions and areas are approximate and are based on Architectural measurements. Windows, columns, privacy screens, demising walls may vary depending upon the plan and floor level. Please see disclosure statement for specific offering details. E.&O.E.



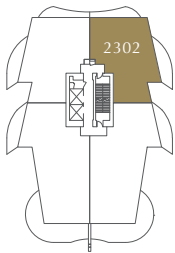
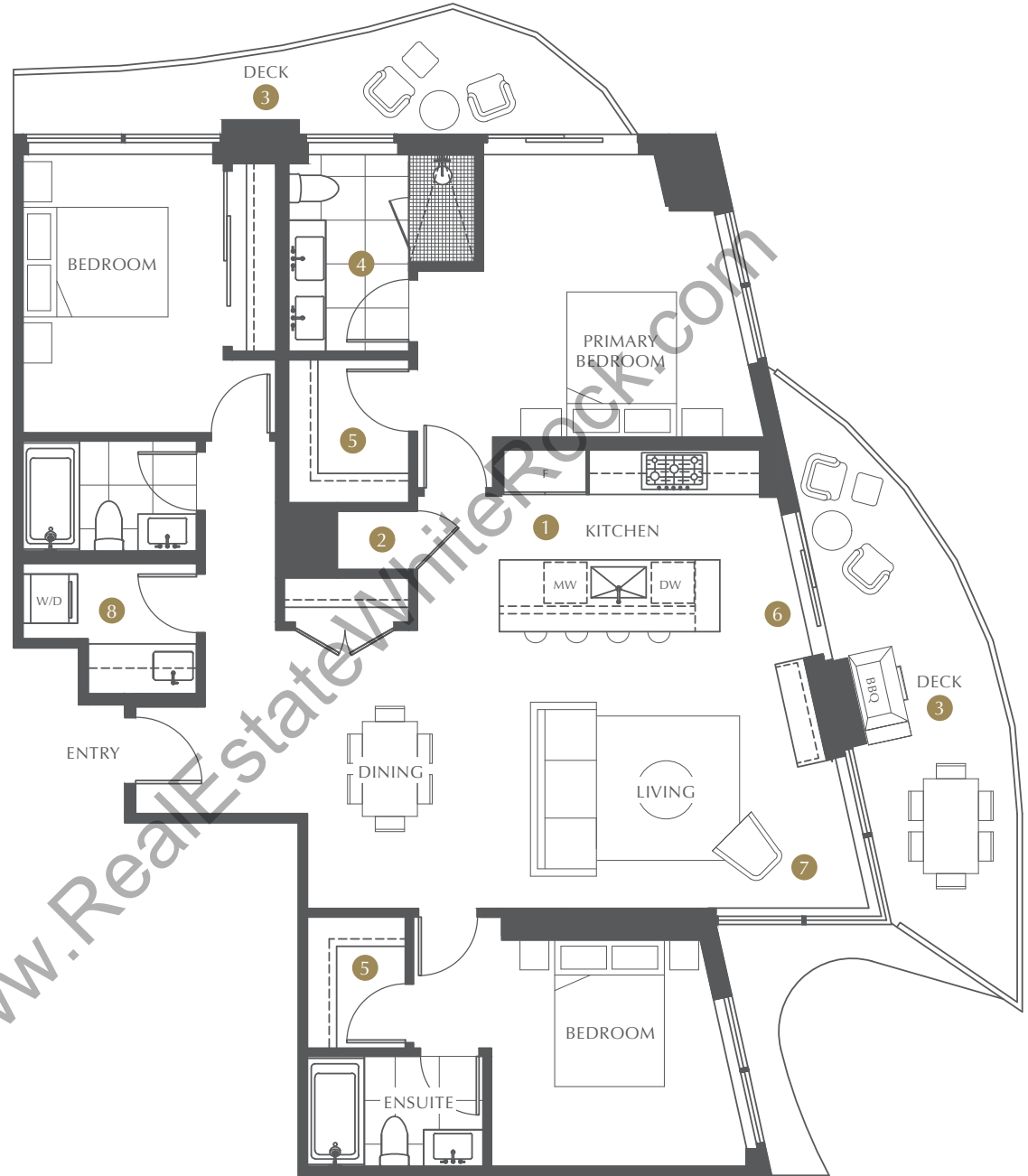
# THE LANDMARK AT FOSTER · MARTIN

# F EAST

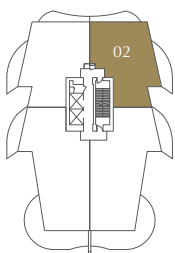
3 BEDROOM  
3 BATHROOM

INTERIOR	1,404 SQ FT
EXTERIOR	263 SQ FT
TOTAL	1,667 SQ FT

- 1 Premium Miele full-size kitchen appliance package including integrated 48" side-by-side fridge and freezer
- 2 Spacious walk-in pantry
- 3 Two private decks with one gas bib located on the deck off of the kitchen for BBQ and/or outdoor heaters
- 4 In-floor radiant heating in primary ensuite to maximize comfort
- 5 Large walk-in-closet in primary and secondary bedrooms
- 6 Wrap-around expansive windows in the living room and kitchen
- 7 Floor-to-ceiling height south-facing windows to fully capture sea views
- 8 Separate laundry room with a sink, lengthy countertop, additional storage and shelving



LEVEL 23



LEVELS 21-22

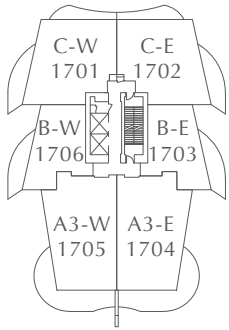


Unit numbering and floor numbers are currently subject to change, pending approval by the City of White Rock. If discrepancies occur, the unit number on the contract of purchase and sale will be deemed to be correct. In our continuing effort to improve and maintain the high standard of the Foster Martin development, the developer reserves the right to modify or change plans, specifications, features and prices without notice. All dimensions and areas are approximate and are based on Architectural measurements. Windows, columns, privacy screens, demising walls may vary depending upon the plan and floor level. Please see disclosure statement for specific offering details. E.&O.E.

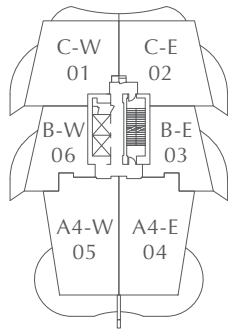


THE LANDMARK  
AT FOSTER · MARTIN

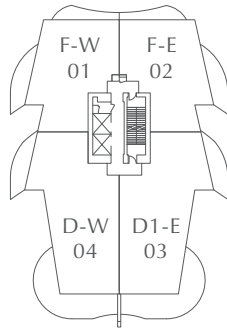
# SITE PLAN



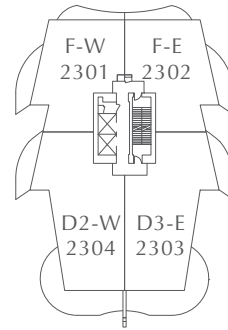
LEVEL 17



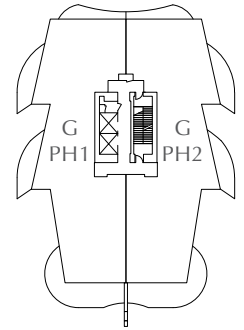
LEVELS 18-20



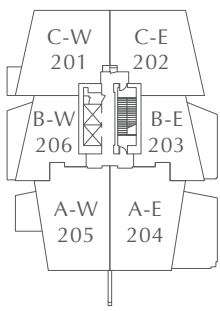
LEVELS 21-22



LEVEL 23

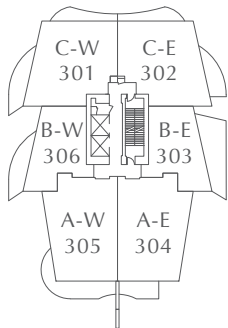


LEVEL 24

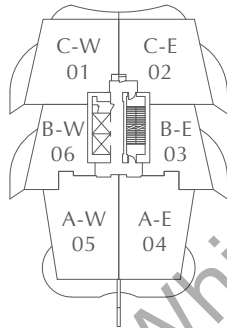


LEVEL 2

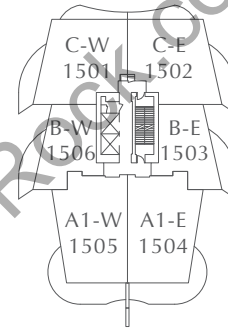
FOSTER STREET ≫



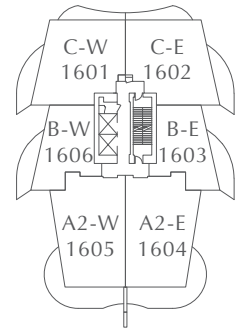
LEVEL 3



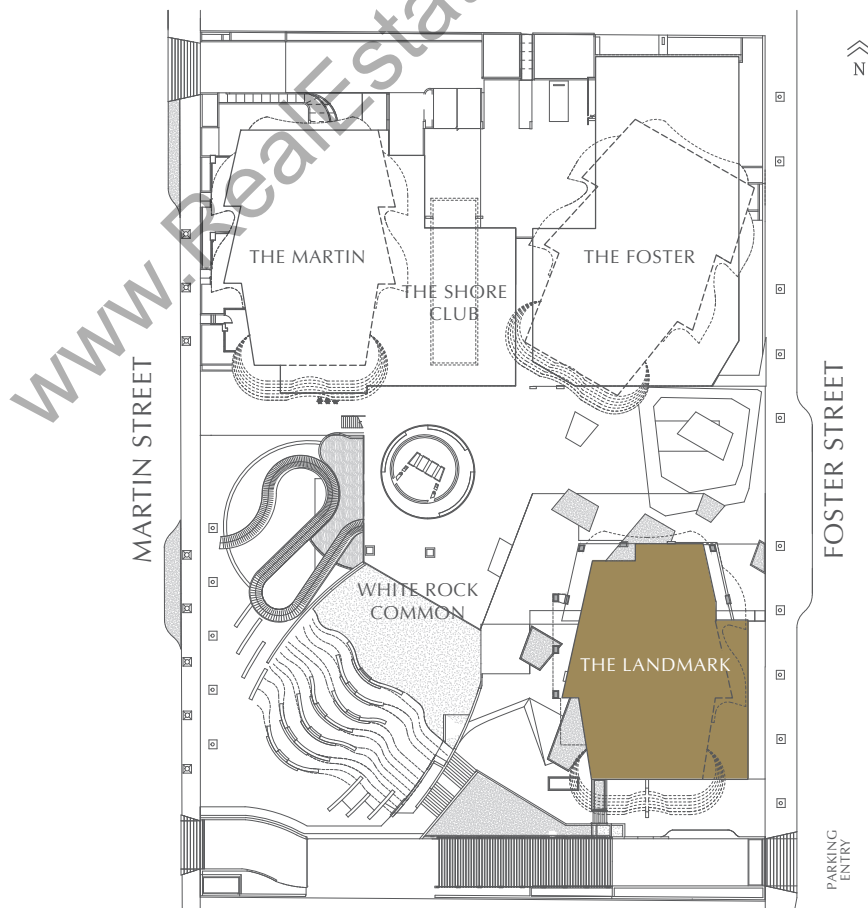
LEVELS 4-14



LEVEL 15



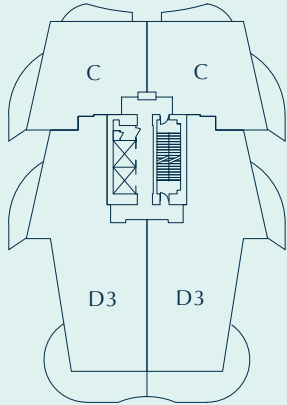
LEVEL 16



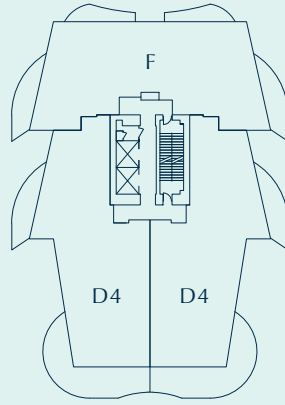
LEVEL 1

Unit numbering and floor numbers are currently subject to change, pending approval by the City of White Rock. If discrepancies occur, the unit number on the contract of purchase and sale will be deemed to be correct. In our continuing effort to improve and maintain the high standard of the Foster Martin development, the developer reserves the right to modify or change plans, specifications, features and prices without notice. All dimensions and areas are approximate and are based on Architectural measurements. Windows, columns, privacy screens, demising walls may vary depending upon the plan and floor level. Please see disclosure statement for specific offering details. E.&O.E.

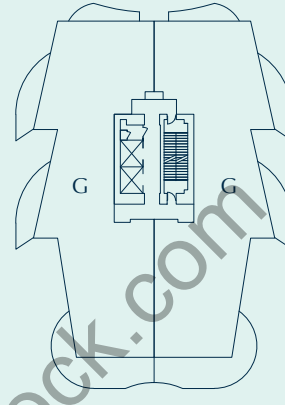
THE MARTIN



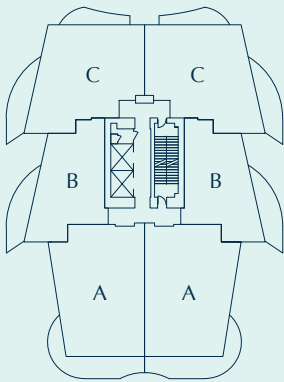
LEVEL 17-21



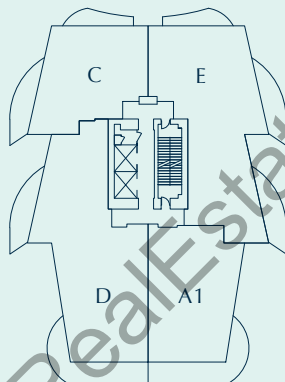
LEVEL 22



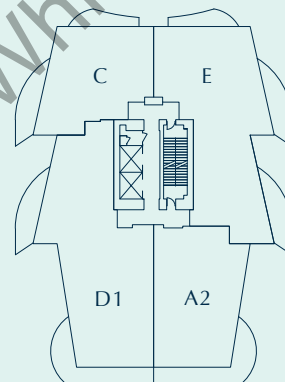
LEVEL 23



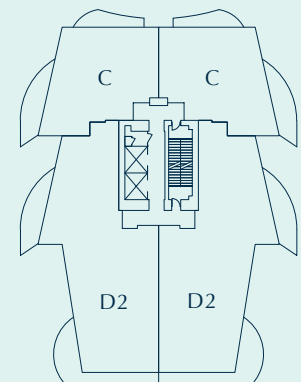
LEVEL 3-13



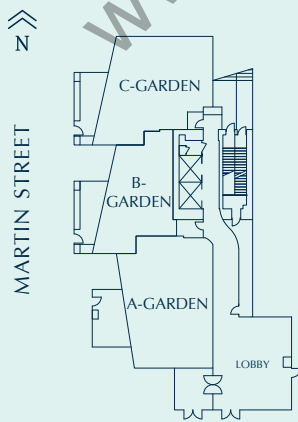
LEVEL 14



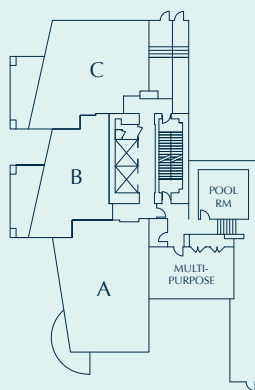
LEVEL 15



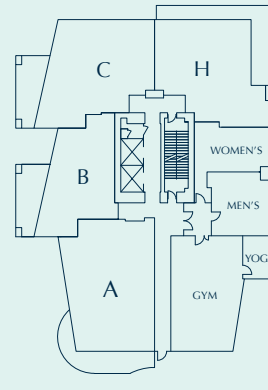
LEVEL 16



LEVEL GF



LEVEL 1



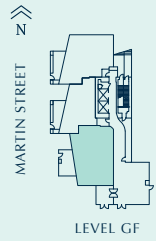
LEVEL 2

Unit numbering and floor numbers are currently subject to change, pending approval by the City of White Rock. If discrepancies occur, the unit number on the contract of purchase and sale will be deemed to be correct.

In our continuing effort to improve and maintain the high standard of the Foster Martin development, the developer reserves the right to modify or change plans, specifications, features and prices without notice. Materials may be substituted with equivalent or better at the developer's sole discretion. All dimensions and areas are approximate and are based on Architectural measurements. As reverse and/or mirrored plans occur throughout the development phases please see latest set of architectural plans for current layout if material to your decision to purchase. Illustrations and renderings are an artist's conception and are intended as a general reference only. Please see disclosure statement for specific offering details. E.&O.E.

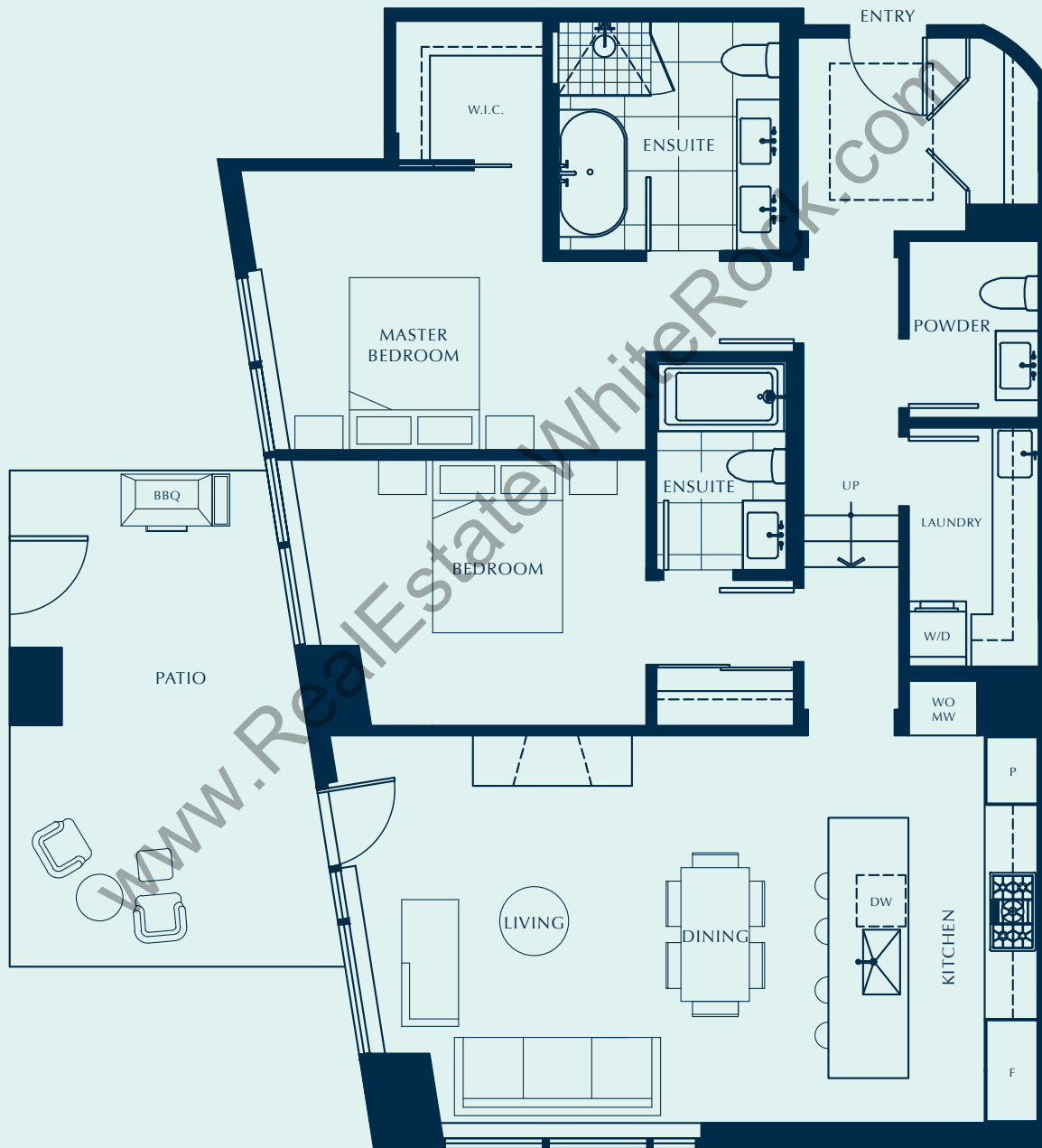
# A-GARDEN

## 2 BED, 2.5 BATH



INTERIOR 1,236 SQ FT  
 EXTERIOR 195 SQ FT  
 TOTAL 1,431 SQ FT

### THE MARTIN

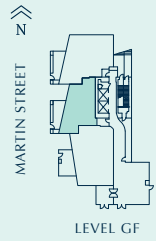


Unit numbering and floor numbers are currently subject to change, pending approval by the City of White Rock. If discrepancies occur, the unit number on the contract of purchase and sale will be deemed to be correct.

In our continuing effort to improve and maintain the high standard of the Foster Martin development, the developer reserves the right to modify or change plans, specifications, features and prices without notice. Materials may be substituted with equivalent or better at the developer's sole discretion. All dimensions and areas are approximate and are based on Architectural measurements. As reverse and/or mirrored plans occur throughout the development phases please see latest set of architectural plans for current layout if material to your decision to purchase. Illustrations and renderings are an artist's conception and are intended as a general reference only. Please see disclosure statement for specific offering details. E.&O.E.

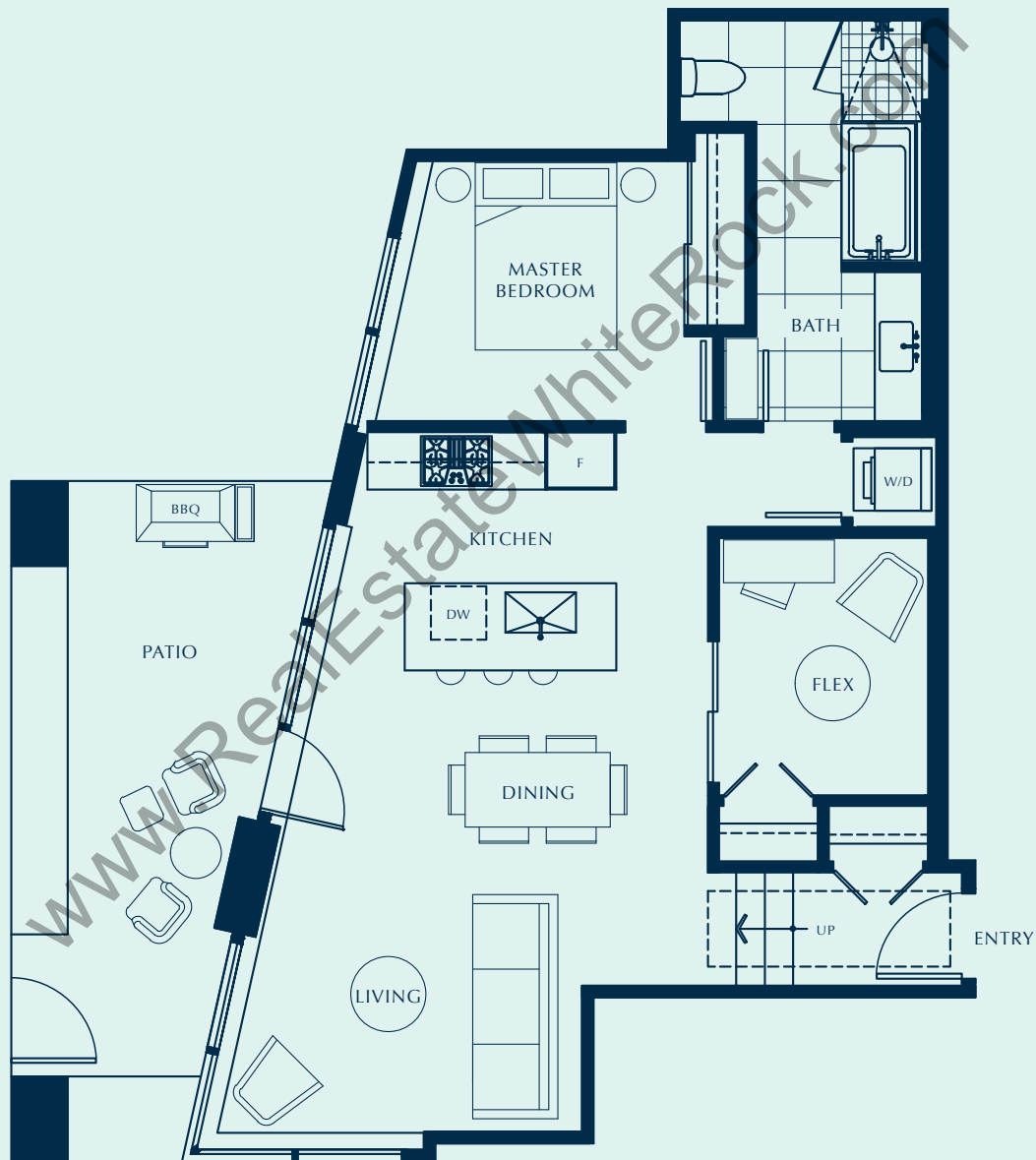
# B-GARDEN

## 1 BED + FLEX, 1 BATH



INTERIOR 806 SQ FT  
EXTERIOR 155 SQ FT  
TOTAL 961 SQ FT

### THE MARTIN



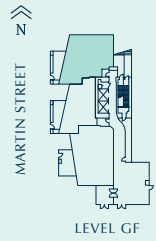
Unit numbering and floor numbers are currently subject to change, pending approval by the City of White Rock. If discrepancies occur, the unit number on the contract of purchase and sale will be deemed to be correct.

In our continuing effort to improve and maintain the high standard of the Foster Martin development, the developer reserves the right to modify or change plans, specifications, features and prices without notice. Materials may be substituted with equivalent or better at the developer's sole discretion. All dimensions and areas are approximate and are based on Architectural measurements. As reverse and/or mirrored plans occur throughout the development phases please see latest set of architectural plans for current layout if material to your decision to purchase. Illustrations and renderings are an artist's conception and are intended as a general reference only. Please see disclosure statement for specific offering details. E.&O.E.



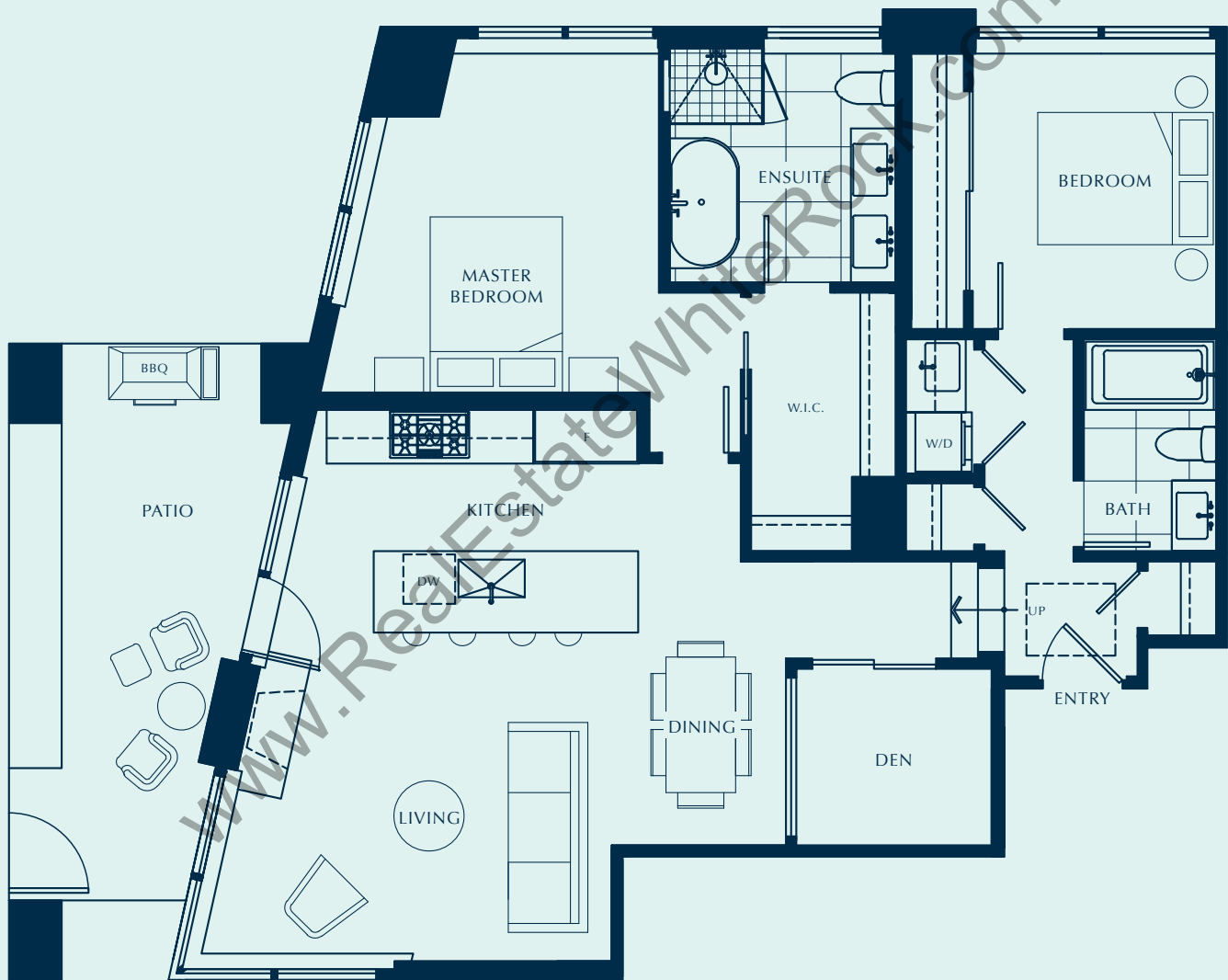
# C-GARDEN

## 2 BED, 2 BATH



INTERIOR 1,114 SQ FT  
EXTERIOR 155 SQ FT  
TOTAL 1,269 SQ FT

### THE MARTIN



Unit numbering and floor numbers are currently subject to change, pending approval by the City of White Rock. If discrepancies occur, the unit number on the contract of purchase and sale will be deemed to be correct.

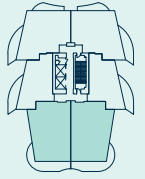
In our continuing effort to improve and maintain the high standard of the Foster Martin development, the developer reserves the right to modify or change plans, specifications, features and prices without notice. Materials may be substituted with equivalent or better at the developer's sole discretion. All dimensions and areas are approximate and are based on Architectural measurements. As reverse and/or mirrored plans occur throughout the development phases please see latest set of architectural plans for current layout if material to your decision to purchase. Illustrations and renderings are an artist's conception and are intended as a general reference only. Please see disclosure statement for specific offering details. E.&O.E.

# A 2 BED, 2.5 BATH

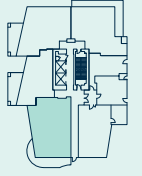


INTERIOR 1,242 SQ FT  
 EXTERIOR 251-259 SQ FT  
 TOTAL 1,493-1,501 SQ FT

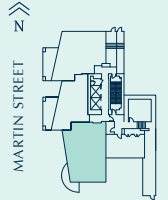
## THE MARTIN



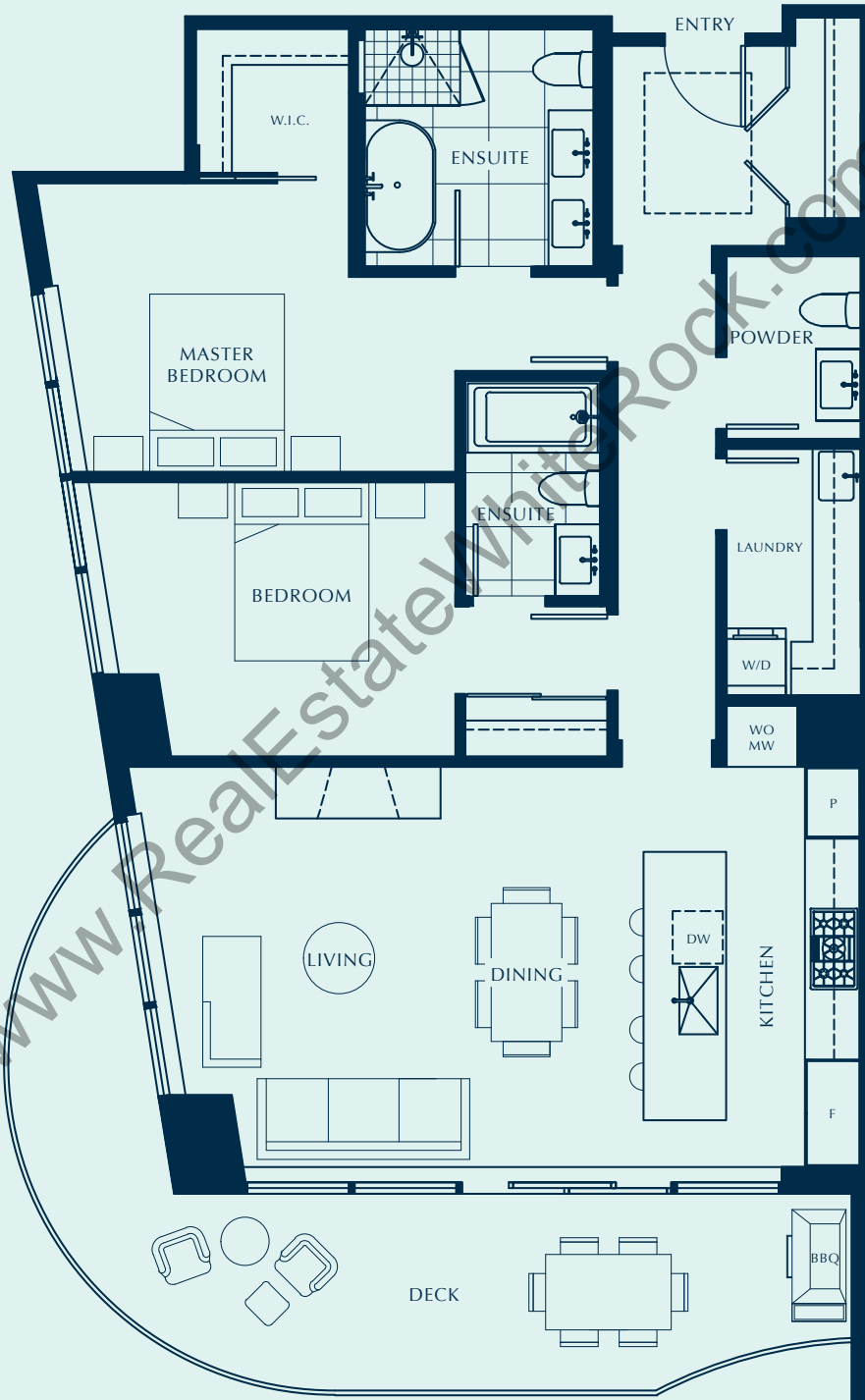
LEVEL 3-13



LEVEL 2



LEVEL 1

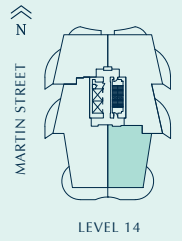


www.RealEstateWhiteRock.com

Unit numbering and floor numbers are currently subject to change, pending approval by the City of White Rock. If discrepancies occur, the unit number on the contract of purchase and sale will be deemed to be correct.

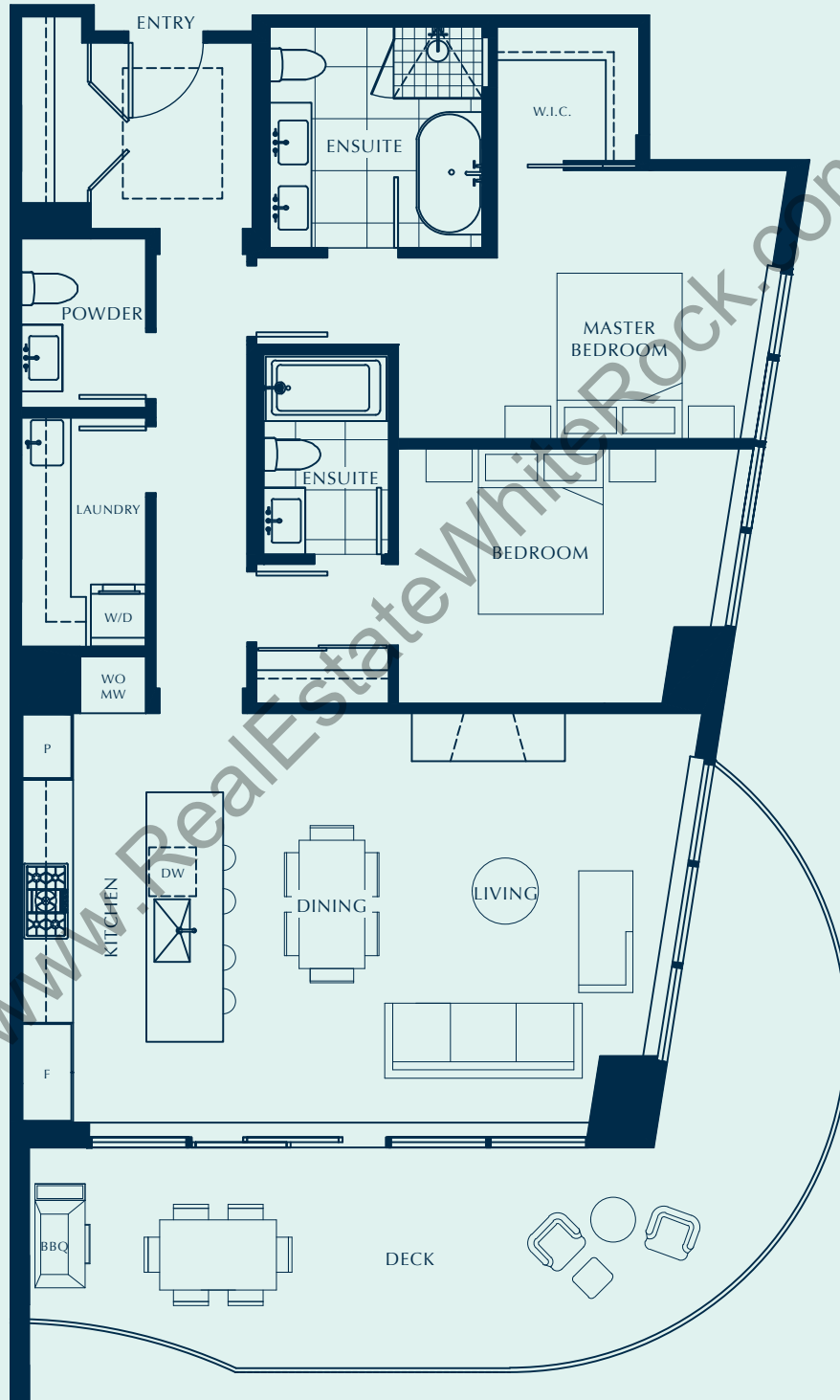
In our continuing effort to improve and maintain the high standard of the Foster Martin development, the developer reserves the right to modify or change plans, specifications, features and prices without notice. Materials may be substituted with equivalent or better at the developer's sole discretion. All dimensions and areas are approximate and are based on Architectural measurements. As reverse and/or mirrored plans occur throughout the development phases please see latest set of architectural plans for current layout if material to your decision to purchase. Illustrations and renderings are an artist's conception and are intended as a general reference only. Please see disclosure statement for specific offering details. E.&O.E.

# A1 2 BED, 2.5 BATH



INTERIOR 1,275 SQ FT  
 EXTERIOR 325 SQ FT  
 TOTAL 1,600 SQ FT

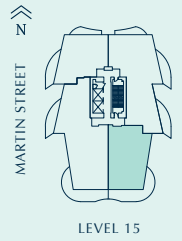
## THE MARTIN



Unit numbering and floor numbers are currently subject to change, pending approval by the City of White Rock. If discrepancies occur, the unit number on the contract of purchase and sale will be deemed to be correct.

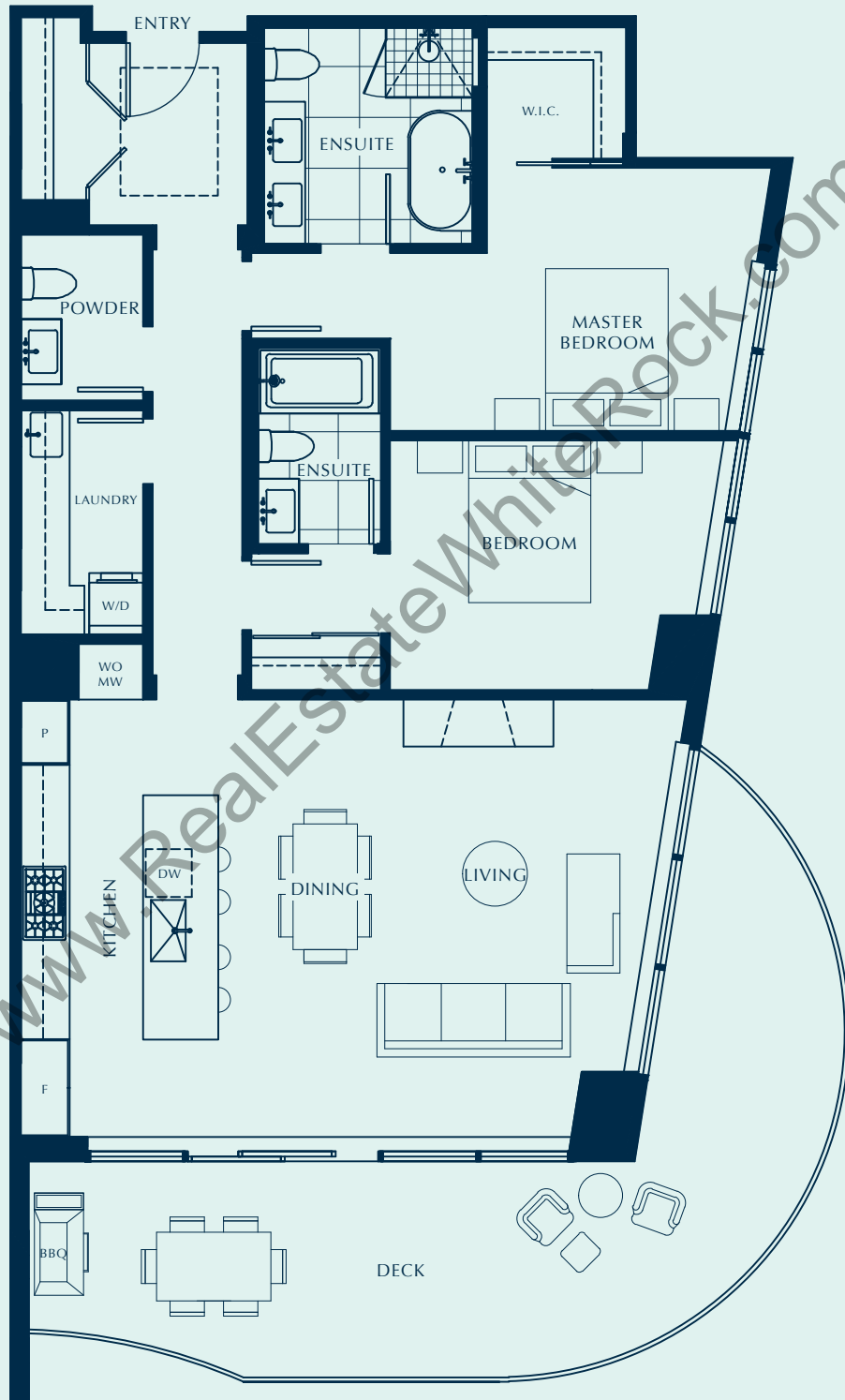
In our continuing effort to improve and maintain the high standard of the Foster Martin development, the developer reserves the right to modify or change plans, specifications, features and prices without notice. Materials may be substituted with equivalent or better at the developer's sole discretion. All dimensions and areas are approximate and are based on Architectural measurements. As reverse and/or mirrored plans occur throughout the development phases please see latest set of architectural plans for current layout if material to your decision to purchase. Illustrations and renderings are an artist's conception and are intended as a general reference only. Please see disclosure statement for specific offering details. E.&O.E.

# A2 2 BED, 2.5 BATH



INTERIOR 1,313 SQ FT  
 EXTERIOR 345 SQ FT  
 TOTAL 1,658 SQ FT

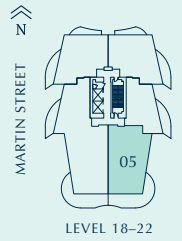
## THE MARTIN



Unit numbering and floor numbers are currently subject to change, pending approval by the City of White Rock. If discrepancies occur, the unit number on the contract of purchase and sale will be deemed to be correct.

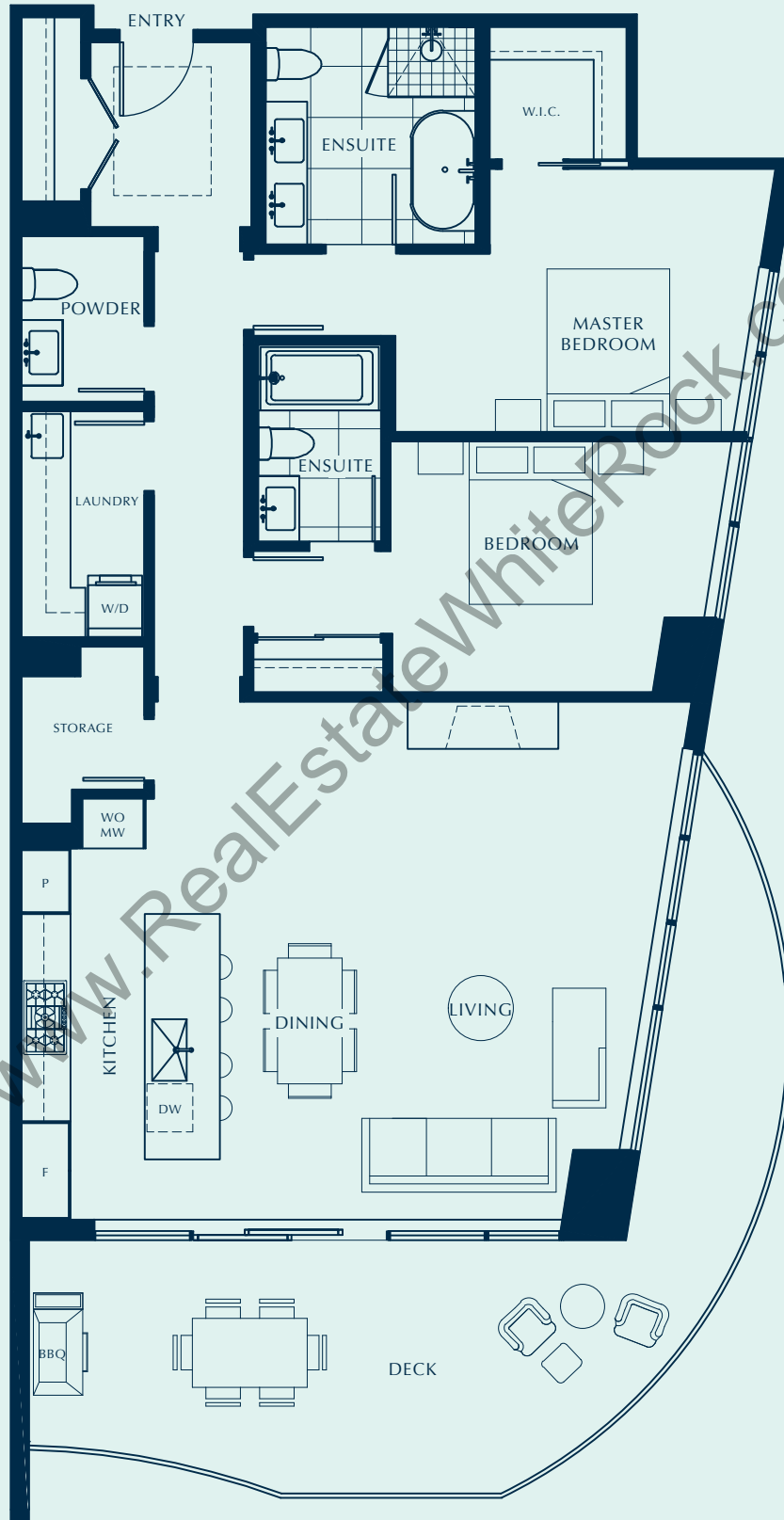
In our continuing effort to improve and maintain the high standard of the Foster Martin development, the developer reserves the right to modify or change plans, specifications, features and prices without notice. Materials may be substituted with equivalent or better at the developer's sole discretion. All dimensions and areas are approximate and are based on Architectural measurements. As reverse and/or mirrored plans occur throughout the development phases please see latest set of architectural plans for current layout if material to your decision to purchase. Illustrations and renderings are an artist's conception and are intended as a general reference only. Please see disclosure statement for specific offering details. E.&O.E.

# A4 2 BED, 2.5 BATH



INTERIOR 1,397 SQ FT  
 EXTERIOR 383-446 SQ FT  
 TOTAL 1,780-1,843 SQ FT

## THE MARTIN



Unit numbering and floor numbers are currently subject to change, pending approval by the City of White Rock. If discrepancies occur, the unit number on the contract of purchase and sale will be deemed to be correct.

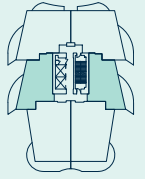
In our continuing effort to improve and maintain the high standard of the Foster Martin development, the developer reserves the right to modify or change plans, specifications, features and prices without notice. Materials may be substituted with equivalent or better at the developer's sole discretion. All dimensions and areas are approximate and are based on Architectural measurements. As reverse and/or mirrored plans occur throughout the development phases please see latest set of architectural plans for current layout if material to your decision to purchase. Illustrations and renderings are an artist's conception and are intended as a general reference only. Please see disclosure statement for specific offering details. E.&O.E.

# B 1 BED + FLEX, 1 BATH

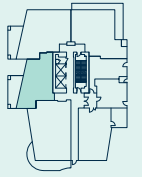


INTERIOR 806 SQ FT  
 EXTERIOR 163-761 SQ FT  
 TOTAL 969-1,567 SQ FT

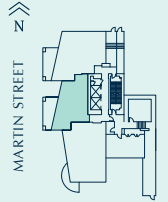
## THE MARTIN



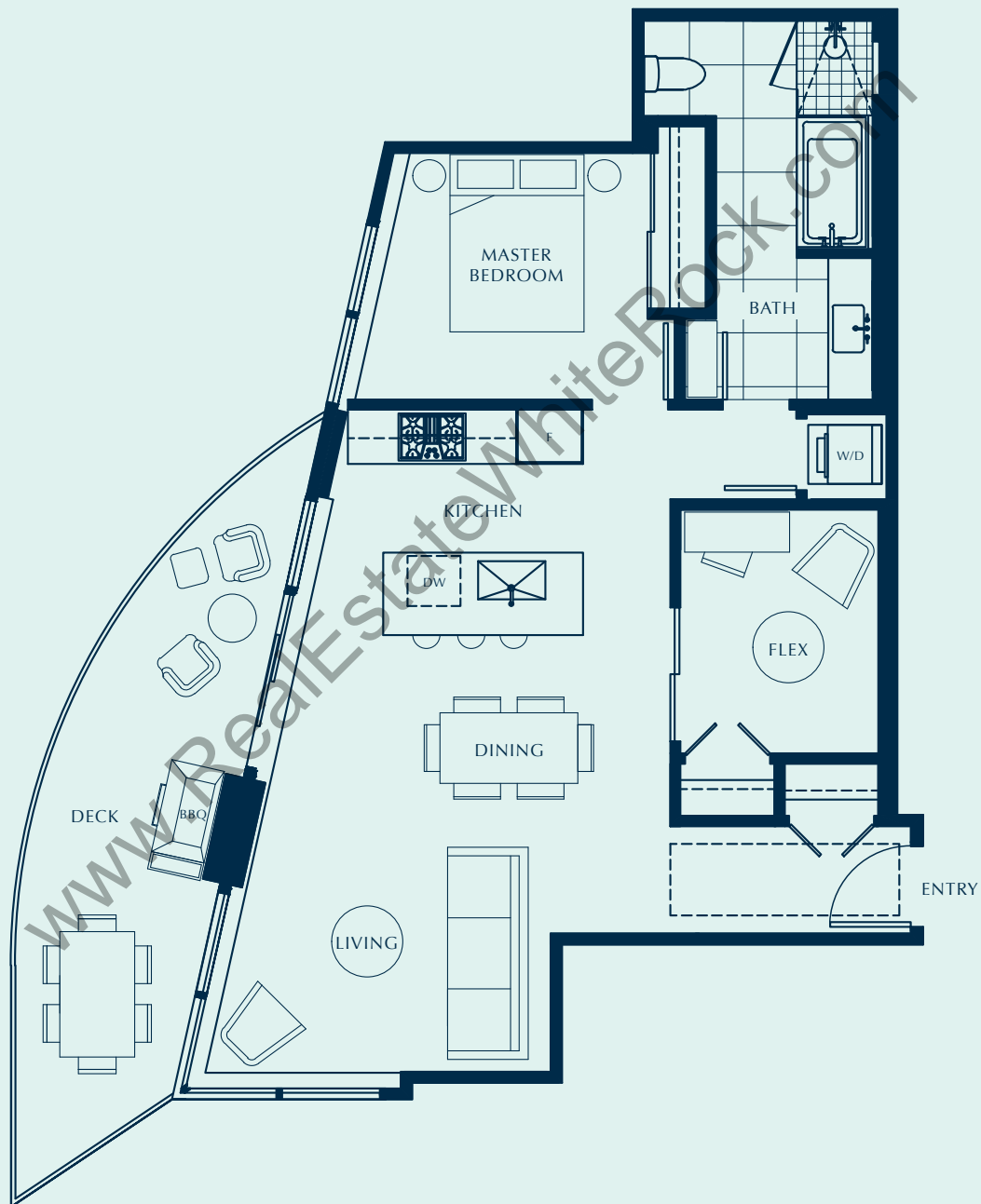
LEVEL 3-13



LEVEL 2



LEVEL 1



Unit numbering and floor numbers are currently subject to change, pending approval by the City of White Rock. If discrepancies occur, the unit number on the contract of purchase and sale will be deemed to be correct.

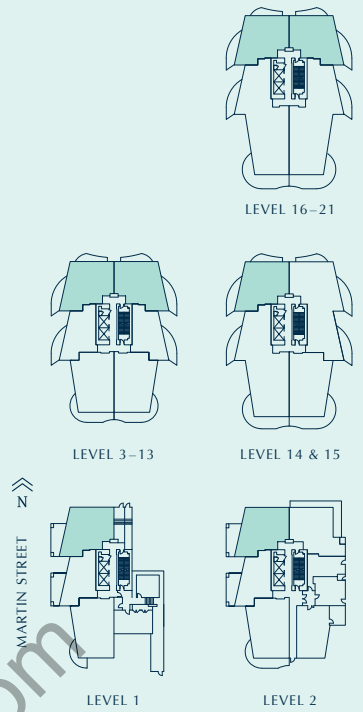
In our continuing effort to improve and maintain the high standard of the Foster Martin development, the developer reserves the right to modify or change plans, specifications, features and prices without notice. Materials may be substituted with equivalent or better at the developer's sole discretion. All dimensions and areas are approximate and are based on Architectural measurements. As reverse and/or mirrored plans occur throughout the development phases please see latest set of architectural plans for current layout if material to your decision to purchase. Illustrations and renderings are an artist's conception and are intended as a general reference only. Please see disclosure statement for specific offering details. E.&O.E.

# C 2 BED + DEN, 2 BATH



INTERIOR 1,114-1,120 SQ FT  
 EXTERIOR 96-264 SQ FT  
 TOTAL 1,210-1,380 SQ FT

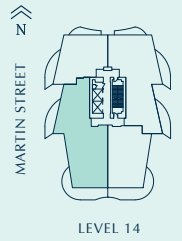
## THE MARTIN



Unit numbering and floor numbers are currently subject to change, pending approval by the City of White Rock. If discrepancies occur, the unit number on the contract of purchase and sale will be deemed to be correct.

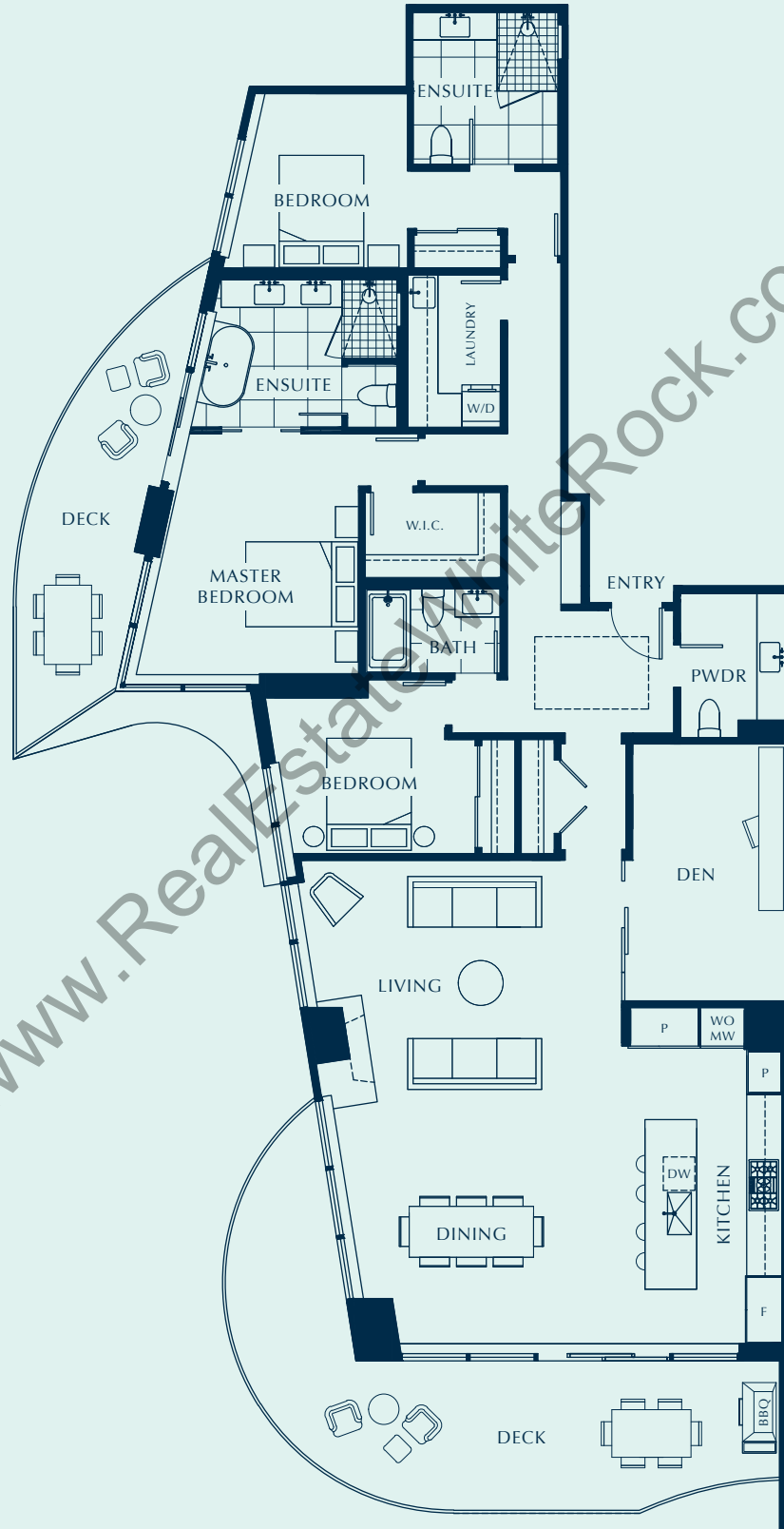
In our continuing effort to improve and maintain the high standard of the Foster Martin development, the developer reserves the right to modify or change plans, specifications, features and prices without notice. Materials may be substituted with equivalent or better at the developer's sole discretion. All dimensions and areas are approximate and are based on Architectural measurements. As reverse and/or mirrored plans occur throughout the development phases please see latest set of architectural plans for current layout if material to your decision to purchase. Illustrations and renderings are an artist's conception and are intended as a general reference only. Please see disclosure statement for specific offering details. E.&O.E.

# D 3 BED + DEN, 3.5 BATH



INTERIOR 2,071 SQ FT  
 EXTERIOR 492 SQ FT  
 TOTAL 2,563 SQ FT

## THE MARTIN



www.RealEstateWhiteRock.com

Unit numbering and floor numbers are currently subject to change, pending approval by the City of White Rock. If discrepancies occur, the unit number on the contract of purchase and sale will be deemed to be correct.

In our continuing effort to improve and maintain the high standard of the Foster Martin development, the developer reserves the right to modify or change plans, specifications, features and prices without notice. Materials may be substituted with equivalent or better at the developer's sole discretion. All dimensions and areas are approximate and are based on Architectural measurements. As reverse and/or mirrored plans occur throughout the development phases please see latest set of architectural plans for current layout if material to your decision to purchase. Illustrations and renderings are an artist's conception and are intended as a general reference only. Please see disclosure statement for specific offering details. E.&O.E.

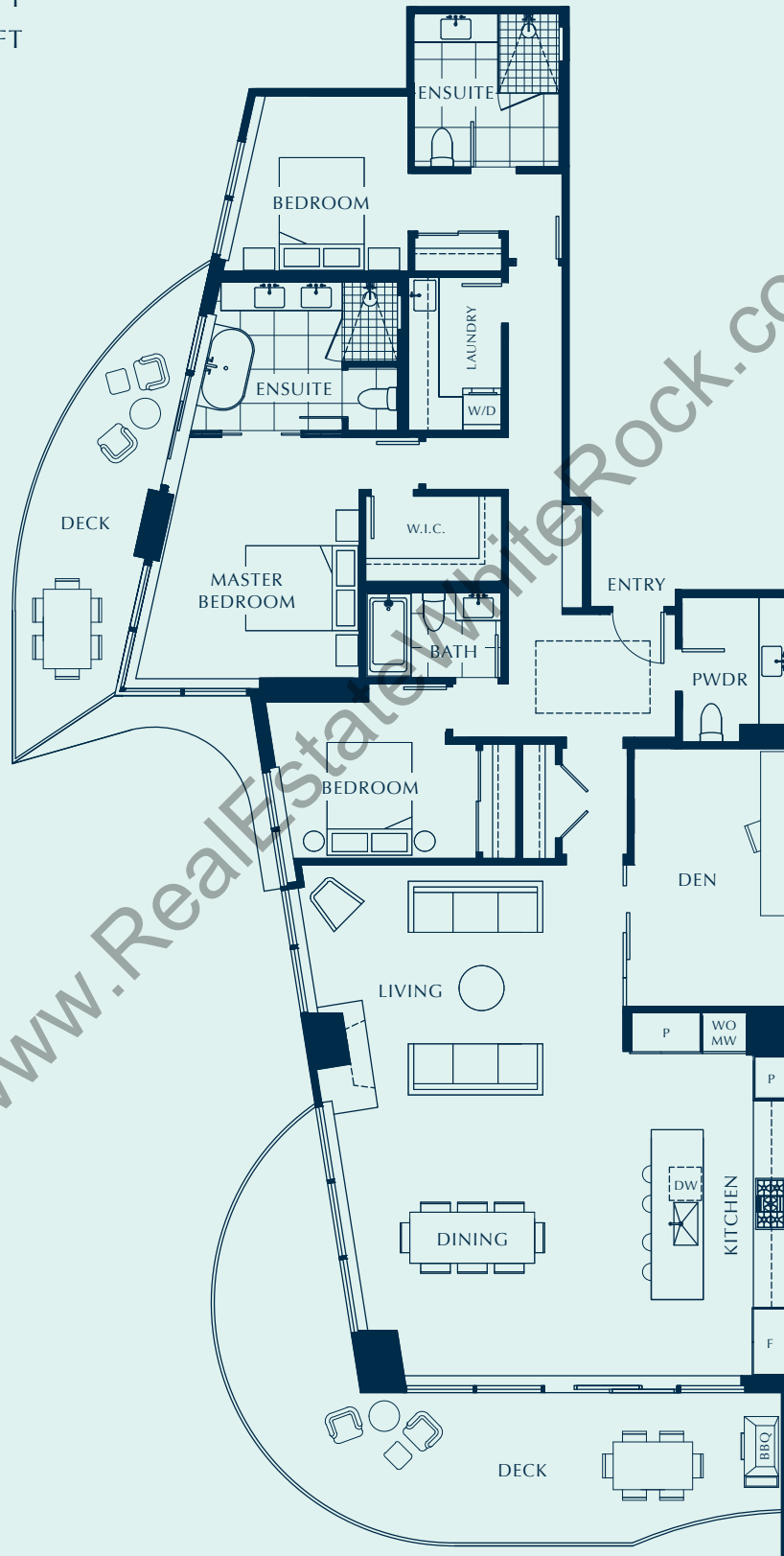


# D1

3 BED + DEN,  
3.5 BATH

INTERIOR 2,110 SQ FT  
EXTERIOR 512 SQ FT  
TOTAL 2,622 SQ FT

## THE MARTIN



Unit numbering and floor numbers are currently subject to change, pending approval by the City of White Rock. If discrepancies occur, the unit number on the contract of purchase and sale will be deemed to be correct.

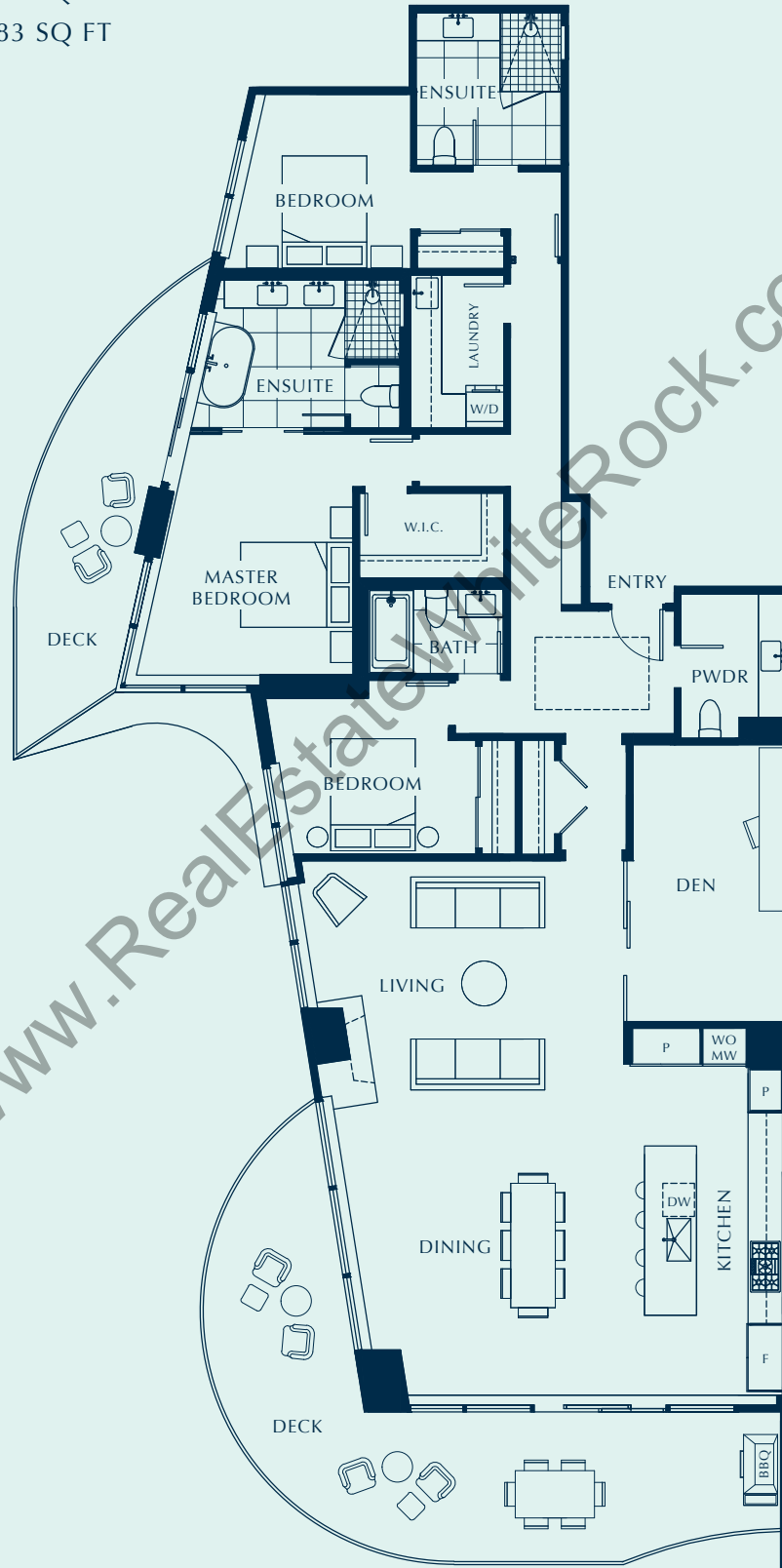
In our continuing effort to improve and maintain the high standard of the Foster Martin development, the developer reserves the right to modify or change plans, specifications, features and prices without notice. Materials may be substituted with equivalent or better at the developer's sole discretion. All dimensions and areas are approximate and are based on Architectural measurements. As reverse and/or mirrored plans occur throughout the development phases please see latest set of architectural plans for current layout if material to your decision to purchase. Illustrations and renderings are an artist's conception and are intended as a general reference only. Please see disclosure statement for specific offering details. E.&O.E.

# D2

3 BED + DEN,  
3.5 BATH

INTERIOR 2,147 SQ FT  
EXTERIOR 535-536 SQ FT  
TOTAL 2,682-2,683 SQ FT

## THE MARTIN

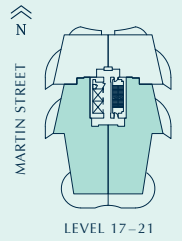


Unit numbering and floor numbers are currently subject to change, pending approval by the City of White Rock. If discrepancies occur, the unit number on the contract of purchase and sale will be deemed to be correct.

In our continuing effort to improve and maintain the high standard of the Foster Martin development, the developer reserves the right to modify or change plans, specifications, features and prices without notice. Materials may be substituted with equivalent or better at the developer's sole discretion. All dimensions and areas are approximate and are based on Architectural measurements. As reverse and/or mirrored plans occur throughout the development phases please see latest set of architectural plans for current layout if material to your decision to purchase. Illustrations and renderings are an artist's conception and are intended as a general reference only. Please see disclosure statement for specific offering details. E.&O.E.

# D3

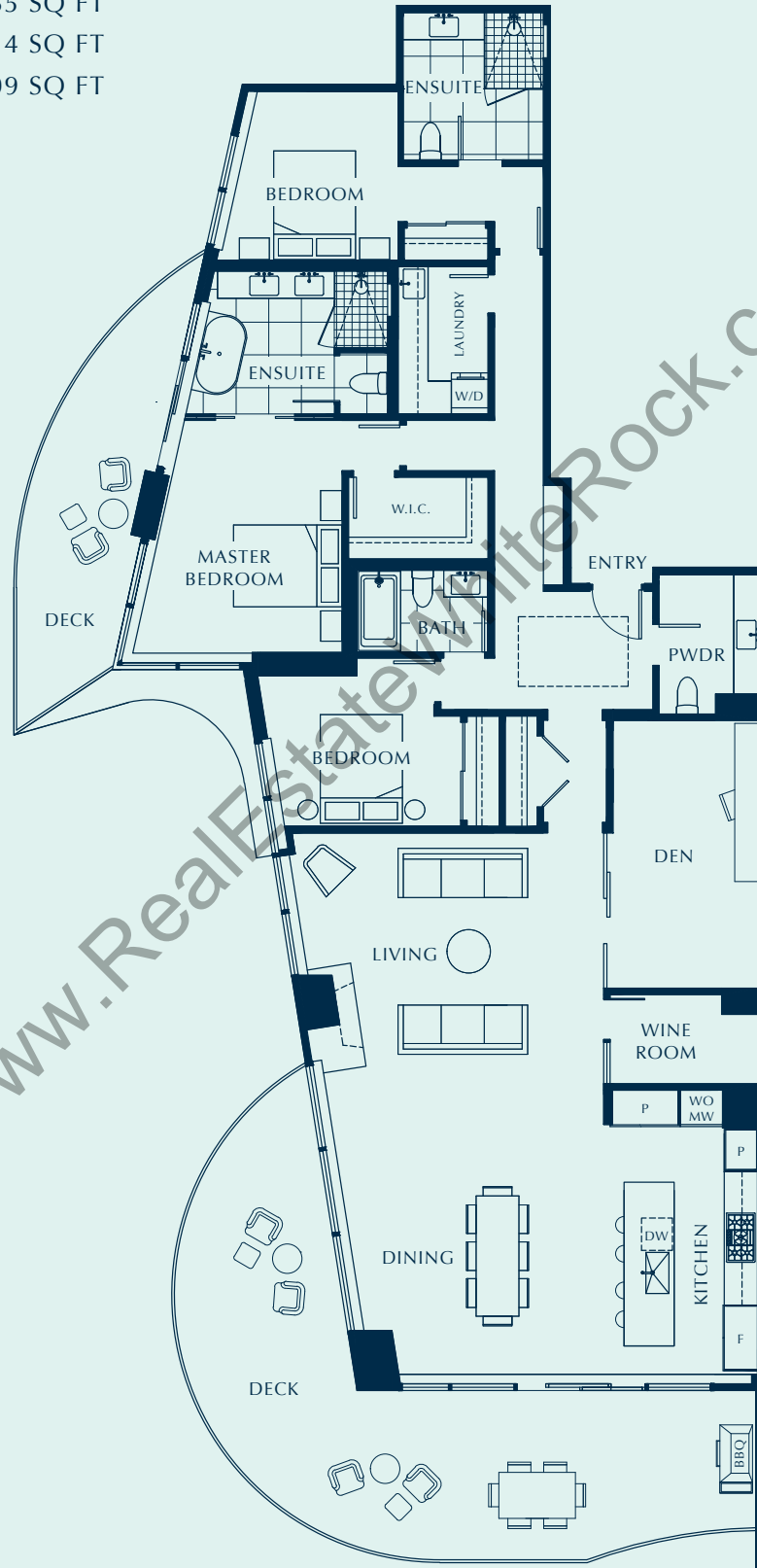
FOSTER · MARTIN  
ON WHITE ROCK COMMONS



3 BED + DEN,  
WINE ROOM,  
3.5 BATH

## THE MARTIN

INTERIOR 2,185 SQ FT  
EXTERIOR 623-624 SQ FT  
TOTAL 2,808-2,809 SQ FT



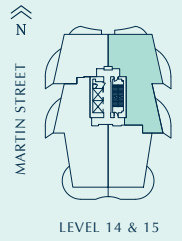
Unit numbering and floor numbers are currently subject to change, pending approval by the City of White Rock. If discrepancies occur, the unit number on the contract of purchase and sale will be deemed to be correct.

In our continuing effort to improve and maintain the high standard of the Foster Martin development, the developer reserves the right to modify or change plans, specifications, features and prices without notice. Materials may be substituted with equivalent or better at the developer's sole discretion. All dimensions and areas are approximate and are based on Architectural measurements. As reverse and/or mirrored plans occur throughout the development phases please see latest set of architectural plans for current layout if material to your decision to purchase. Illustrations and renderings are an artist's conception and are intended as a general reference only. Please see disclosure statement for specific offering details. E.&O.E.



# E

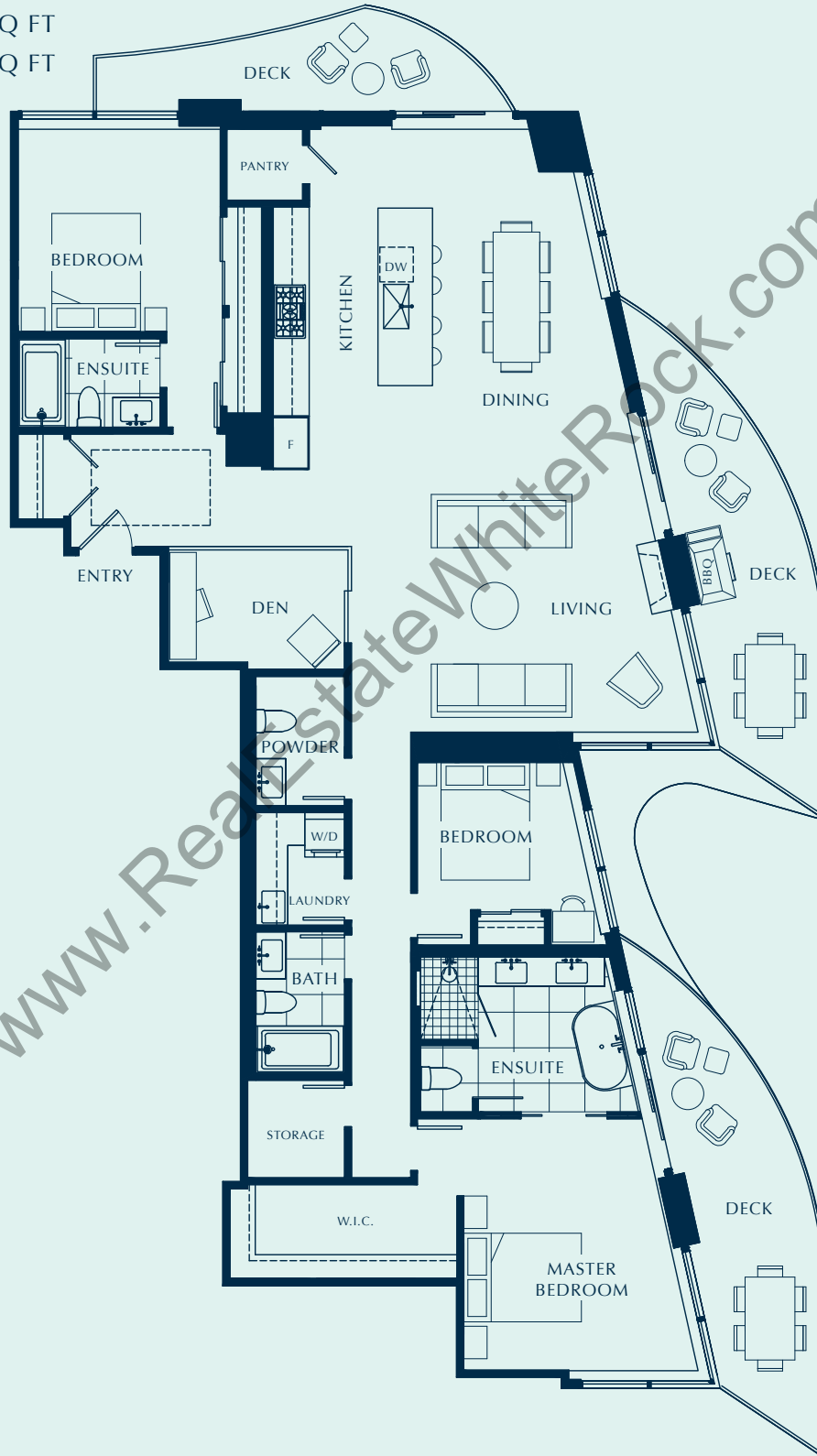
FOSTER · MARTIN  
ON WHITE ROCK COMMONS



3 BED + DEN,  
PANTRY,  
3.5 BATH

## THE MARTIN

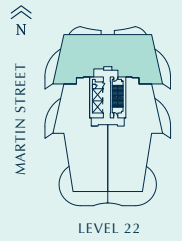
INTERIOR 1,917 SQ FT  
EXTERIOR 425 SQ FT  
TOTAL 2,342 SQ FT



Unit numbering and floor numbers are currently subject to change, pending approval by the City of White Rock. If discrepancies occur, the unit number on the contract of purchase and sale will be deemed to be correct.

In our continuing effort to improve and maintain the high standard of the Foster Martin development, the developer reserves the right to modify or change plans, specifications, features and prices without notice. Materials may be substituted with equivalent or better at the developer's sole discretion. All dimensions and areas are approximate and are based on Architectural measurements. As reverse and/or mirrored plans occur throughout the development phases please see latest set of architectural plans for current layout if material to your decision to purchase. Illustrations and renderings are an artist's conception and are intended as a general reference only. Please see disclosure statement for specific offering details. E.&O.E.

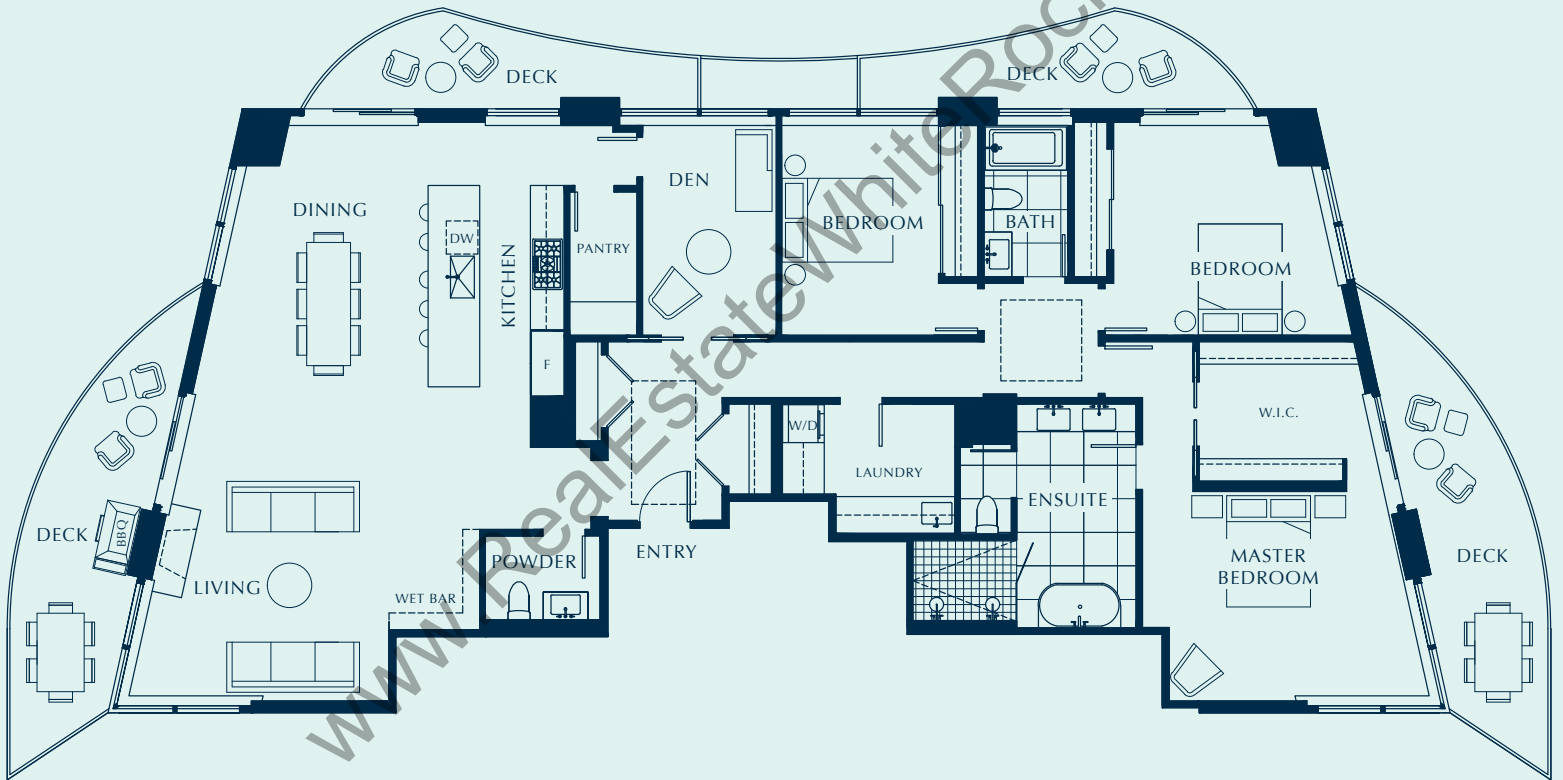
# F



## SUB-PENTHOUSE 3 BED + DEN, 3.5 BATH

### THE MARTIN

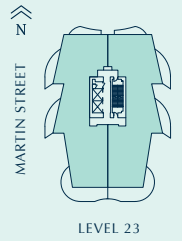
INTERIOR 2,245 SQ FT  
EXTERIOR 518 SQ FT  
TOTAL 2,763 SQ FT



Unit numbering and floor numbers are currently subject to change, pending approval by the City of White Rock. If discrepancies occur, the unit number on the contract of purchase and sale will be deemed to be correct.

In our continuing effort to improve and maintain the high standard of the Foster Martin development, the developer reserves the right to modify or change plans, specifications, features and prices without notice. Materials may be substituted with equivalent or better at the developer's sole discretion. All dimensions and areas are approximate and are based on Architectural measurements. As reverse and/or mirrored plans occur throughout the development phases please see latest set of architectural plans for current layout if material to your decision to purchase. Illustrations and renderings are an artist's conception and are intended as a general reference only. Please see disclosure statement for specific offering details. E.&O.E.

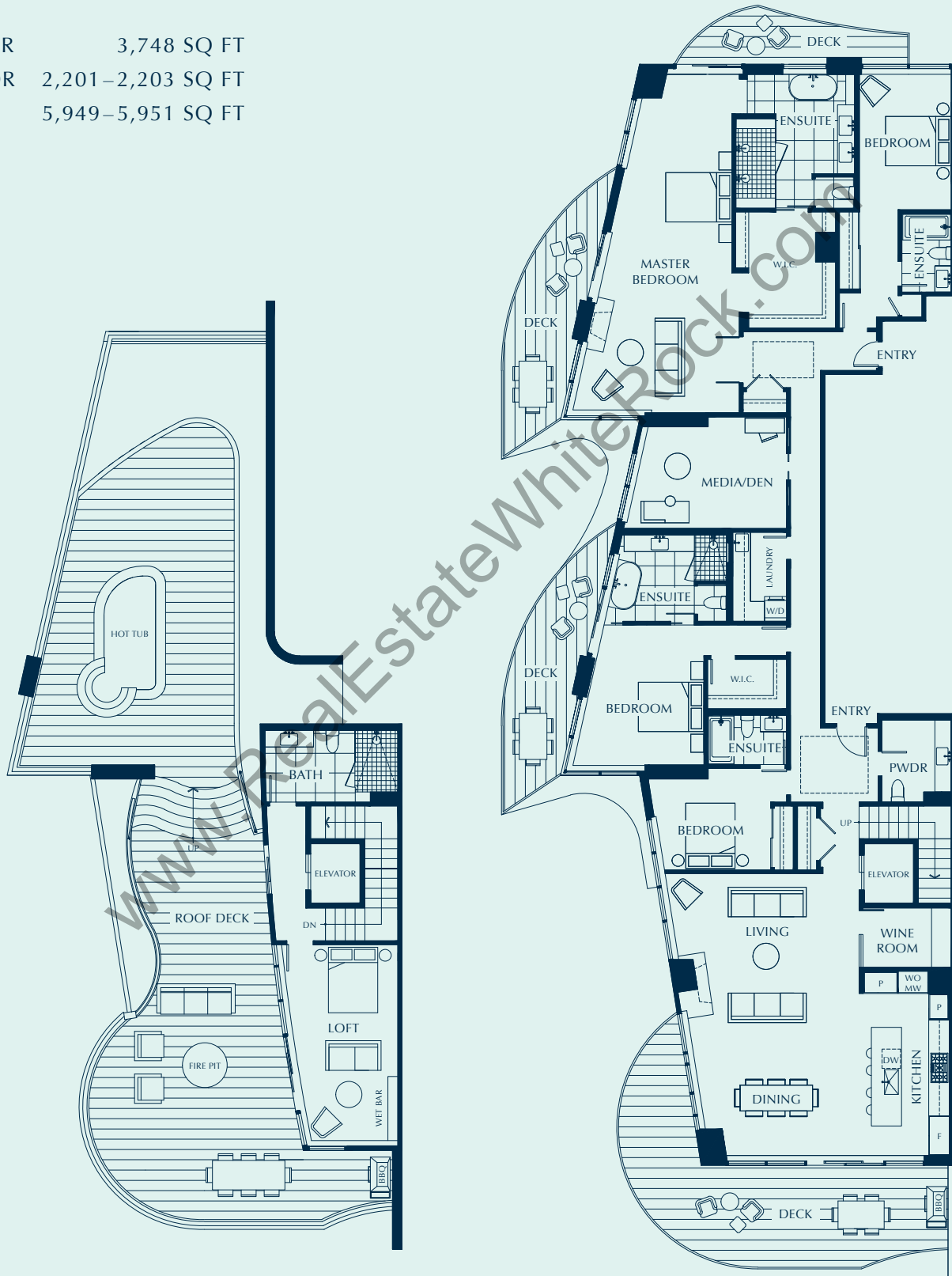
# G



## PENTHOUSE 4 BED + MEDIA/DEN, LOFT + HOT TUB, 4.5 BATH

### THE MARTIN

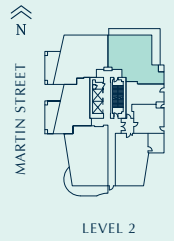
INTERIOR 3,748 SQ FT  
EXTERIOR 2,201-2,203 SQ FT  
TOTAL 5,949-5,951 SQ FT



Unit numbering and floor numbers are currently subject to change, pending approval by the City of White Rock. If discrepancies occur, the unit number on the contract of purchase and sale will be deemed to be correct.

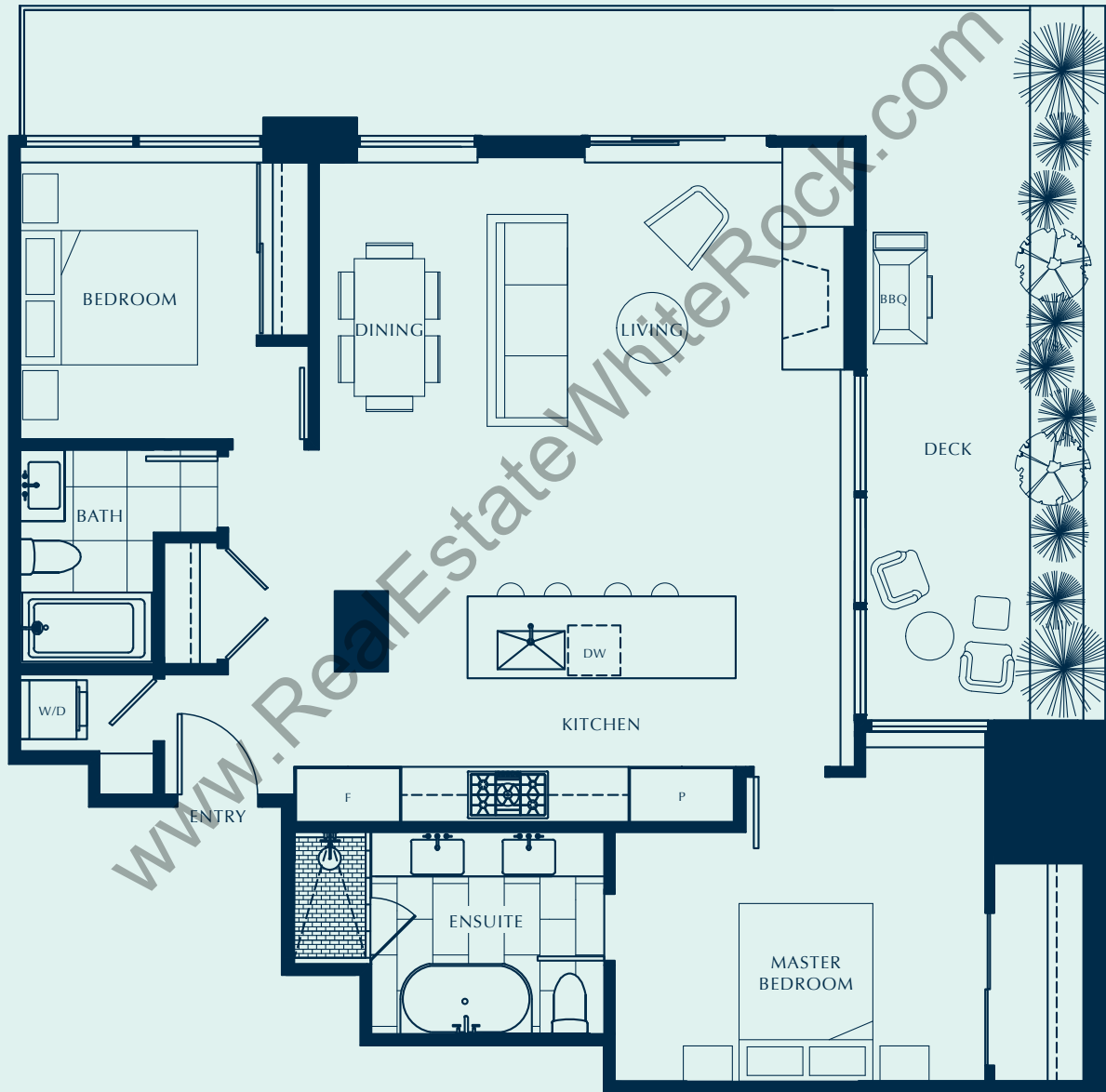
In our continuing effort to improve and maintain the high standard of the Foster Martin development, the developer reserves the right to modify or change plans, specifications, features and prices without notice. Materials may be substituted with equivalent or better at the developer's sole discretion. All dimensions and areas are approximate and are based on Architectural measurements. As reverse and/or mirrored plans occur throughout the development phases please see latest set of architectural plans for current layout if material to your decision to purchase. Illustrations and renderings are an artist's conception and are intended as a general reference only. Please see disclosure statement for specific offering details. E.&O.E.

# H 2 BED, 2 BATH



INTERIOR 1,111 SQ FT  
EXTERIOR 152 SQ FT  
TOTAL 1,262 SQ FT

## THE MARTIN



Unit numbering and floor numbers are currently subject to change, pending approval by the City of White Rock. If discrepancies occur, the unit number on the contract of purchase and sale will be deemed to be correct.

In our continuing effort to improve and maintain the high standard of the Foster Martin development, the developer reserves the right to modify or change plans, specifications, features and prices without notice. Materials may be substituted with equivalent or better at the developer's sole discretion. All dimensions and areas are approximate and are based on Architectural measurements. As reverse and/or mirrored plans occur throughout the development phases please see latest set of architectural plans for current layout if material to your decision to purchase. Illustrations and renderings are an artist's conception and are intended as a general reference only. Please see disclosure statement for specific offering details. E.&O.E.