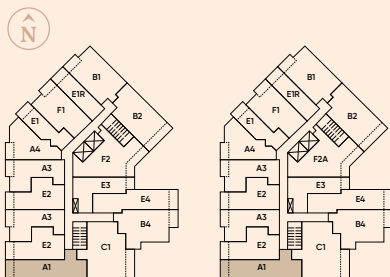
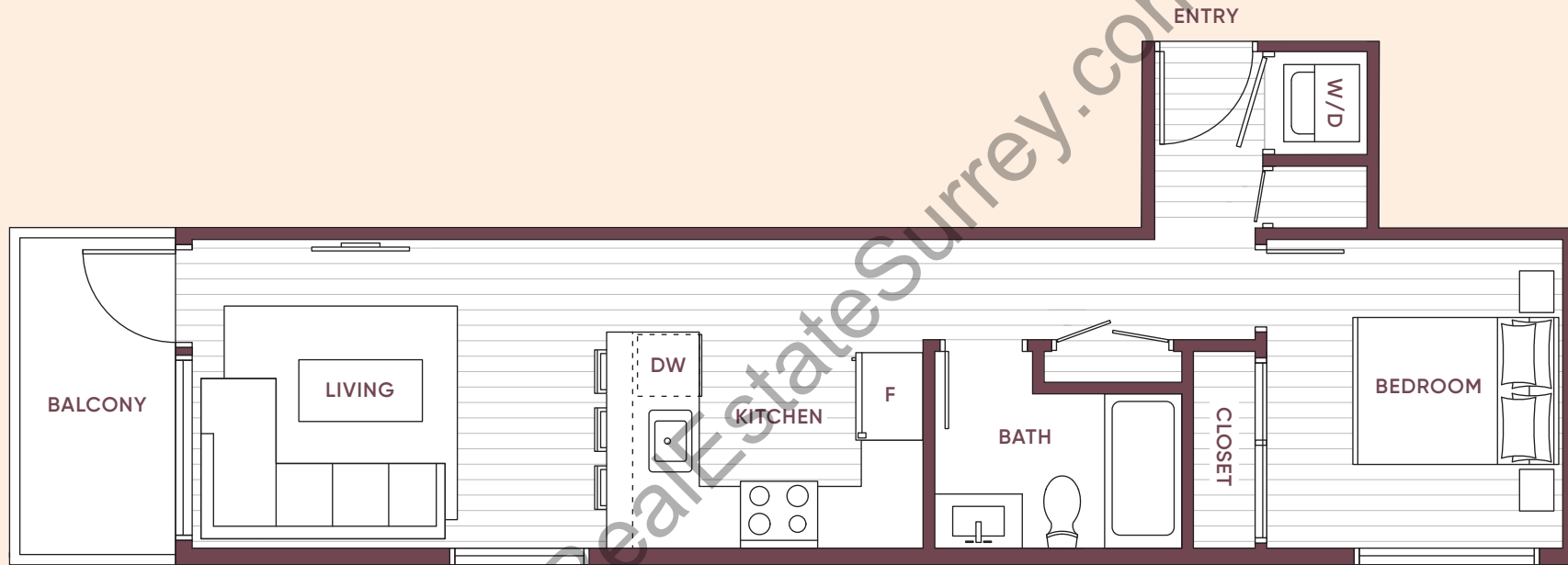


# A1 1 BED, 1 BATH

INTERIOR: 544 SQ FT | EXTERIOR: 51 SQ FT | TOTAL: 595 SQ FT

## Stowa



LEVEL 2

LEVELS 3-4

**LifeAtStowa.com**

The developer reserves the right to make changes, modifications or substitutes to the building design, specifications and floorplans should they be necessary. Renderings, views, and layouts are for illustration purposes only. This is not an offering for sale and such an offering can only be made after filing a disclosure statement. Sales powered by MLA Canada Realty. E.&O.E. Genaris Properties Inc. (1323028 B.C. LTD.)

**GENARIS**  
PROPERTIES

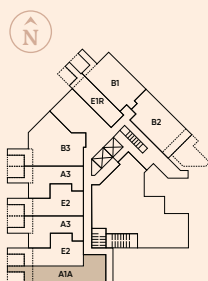
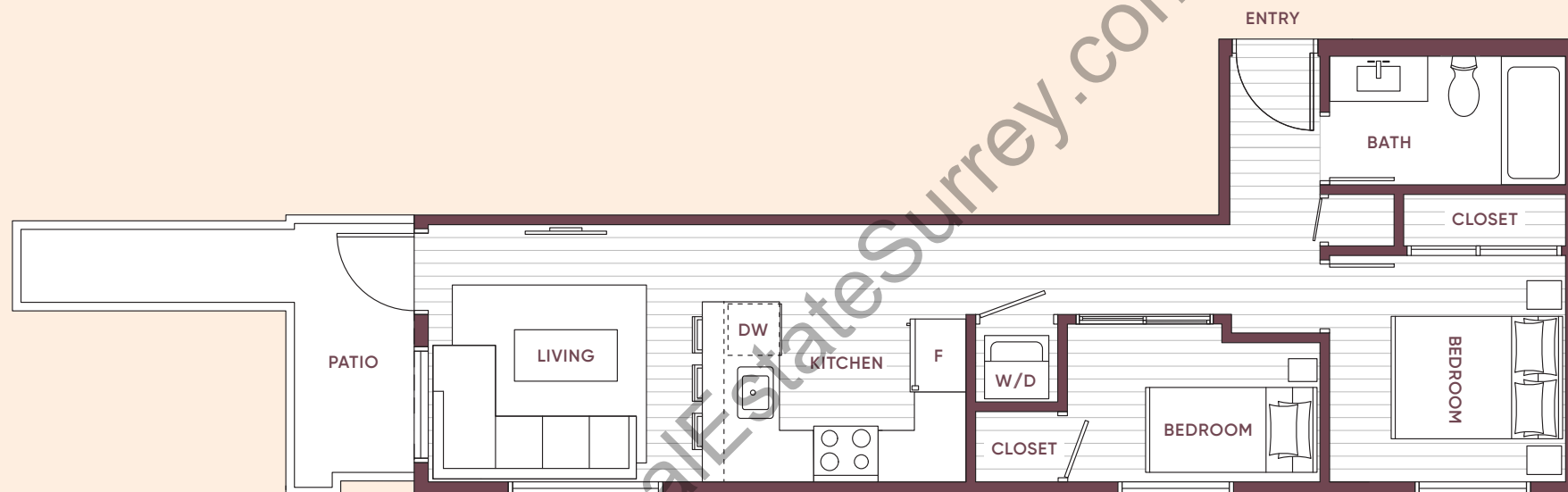
**MLA**  
CANADA

# A1A

## JR 2 BED, 1 BATH

INTERIOR: 590 SQ FT | EXTERIOR: 90 SQ FT | TOTAL: 680 SQ FT

# Stowa



LEVEL 1

**LifeAtStowa.com**

The developer reserves the right to make changes, modifications or substitutes to the building design, specifications and floorplans should they be necessary. Renderings, views, and layouts are for illustration purposes only. This is not an offering for sale and such an offering can only be made after filing a disclosure statement. Sales powered by MLA Canada Realty. E.&O.E. Genaris Properties Inc. (1323028 B.C. LTD.)

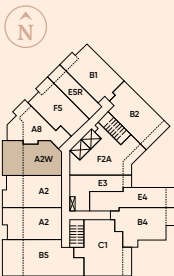
**GENARIS**  
PROPERTIES

**MLA**  
CANADA

# A2W 1 BED, 1 BATH

INTERIOR: 471 SQ FT | EXTERIOR: 252 SQ FT | TOTAL: 723 SQ FT

## Stowa



LEVEL 5

LifeAtStowa.com

The developer reserves the right to make changes, modifications or substitutes to the building design, specifications and floorplans should they be necessary. Renderings, views, and layouts are for illustration purposes only. This is not an offering for sale and such an offering can only be made after filing a disclosure statement. Sales powered by MLA Canada Realty. E.&O.E. Genaris Properties Inc. (1323028 B.C. LTD.)

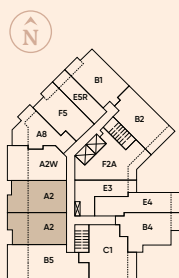
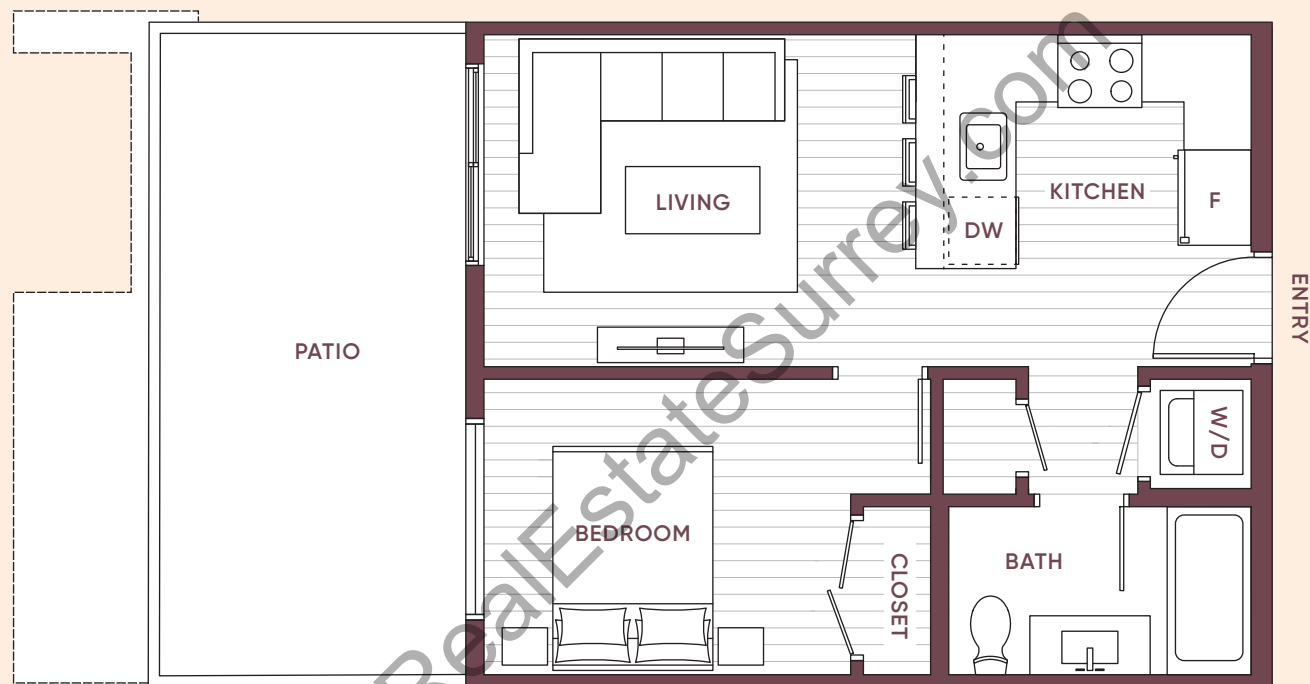


# A2

## 1 BED, 1 BATH

INTERIOR: 474 SQ FT | EXTERIOR: 199-243 SQ FT | TOTAL: 673-717 SQ FT

# Stowa



LEVEL 5

LEVEL 6

LifeAtStowa.com

The developer reserves the right to make changes, modifications or substitutes to the building design, specifications and floorplans should they be necessary. Renderings, views, and layouts are for illustration purposes only. This is not an offering for sale and such an offering can only be made after filing a disclosure statement. Sales powered by MLA Canada Realty. E.&O.E. Genaris Properties Inc. (1323028 B.C. LTD.)

GENARIS  
PROPERTIES

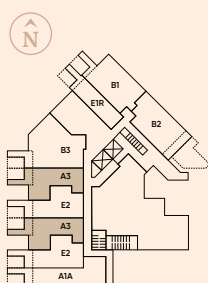
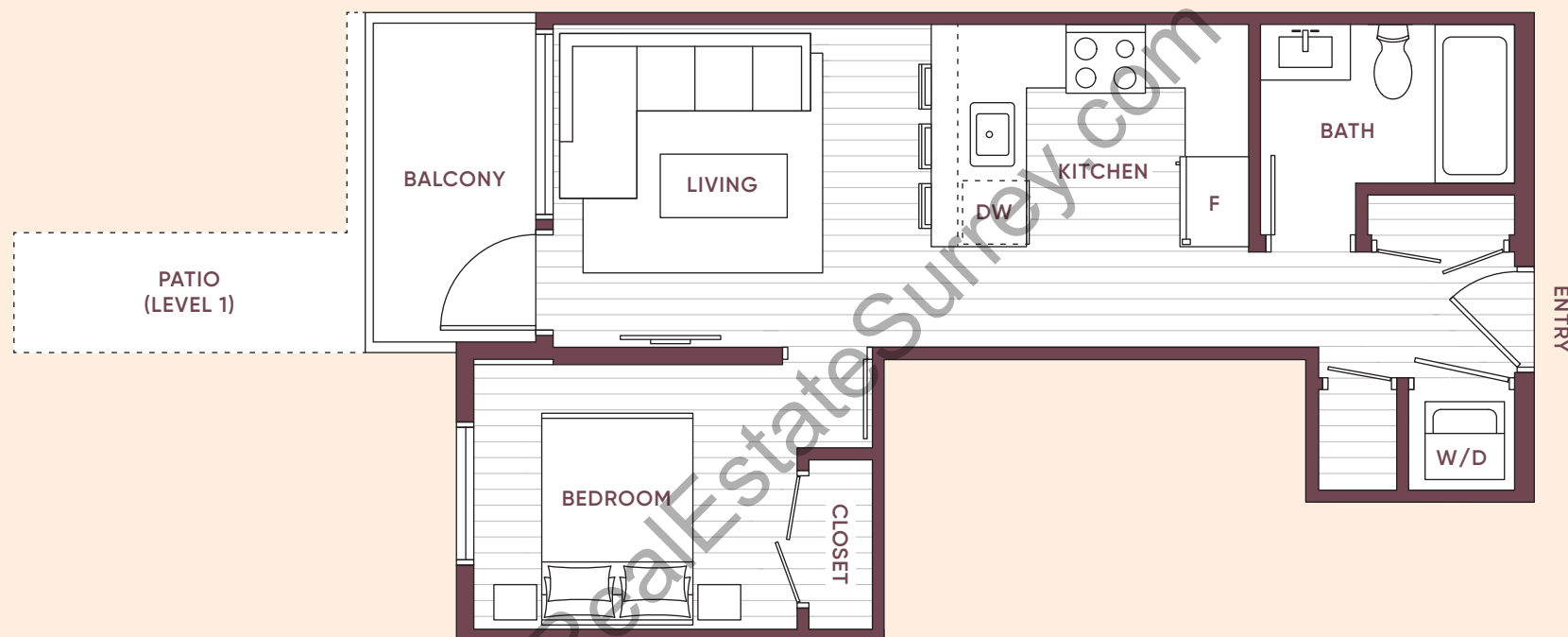
MLA  
CANADA

# A3

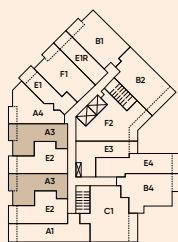
## 1 BED, 1 BATH

INTERIOR: 497 SQ FT | EXTERIOR: 50-86 SQ FT | TOTAL: 547-583 SQ FT

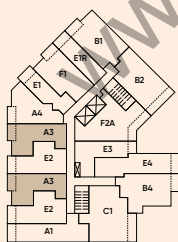
# Stowa



LEVEL 1



LEVEL 2



LEVELS 3-4

**LifeAtStowa.com**

The developer reserves the right to make changes, modifications or substitutes to the building design, specifications and floorplans should they be necessary. Renderings, views, and layouts are for illustration purposes only. This is not an offering for sale and such an offering can only be made after filing a disclosure statement. Sales powered by MLA Canada Realty. E.&O.E. Genaris Properties Inc. (1323028 B.C. LTD.)

**GENARIS**  
PROPERTIES

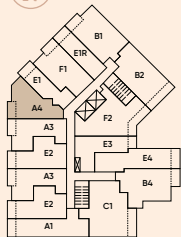
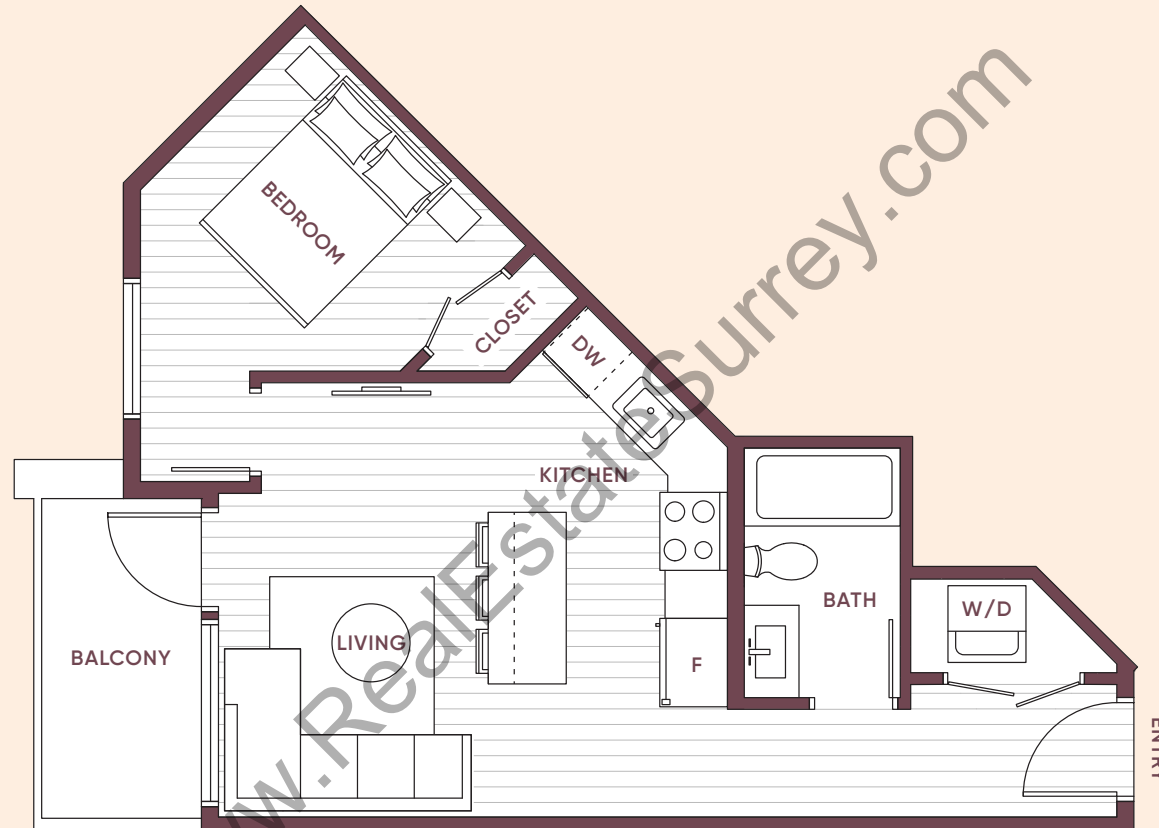
**MLA**  
CANADA

# A4

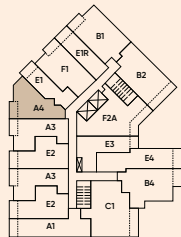
## 1 BED, 1 BATH

INTERIOR: 505 SQ FT | EXTERIOR: 51 SQ FT | TOTAL: 556 SQ FT

# Stowa



LEVEL 2



LEVELS 3-4

**LifeAtStowa.com**

The developer reserves the right to make changes, modifications or substitutes to the building design, specifications and floorplans should they be necessary. Renderings, views, and layouts are for illustration purposes only. This is not an offering for sale and such an offering can only be made after filing a disclosure statement. Sales powered by MLA Canada Realty. E.&O.E. Genaris Properties Inc. (1323028 B.C. LTD.)

**GENARIS**  
PROPERTIES

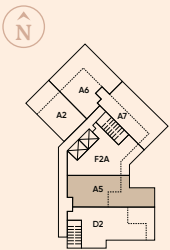
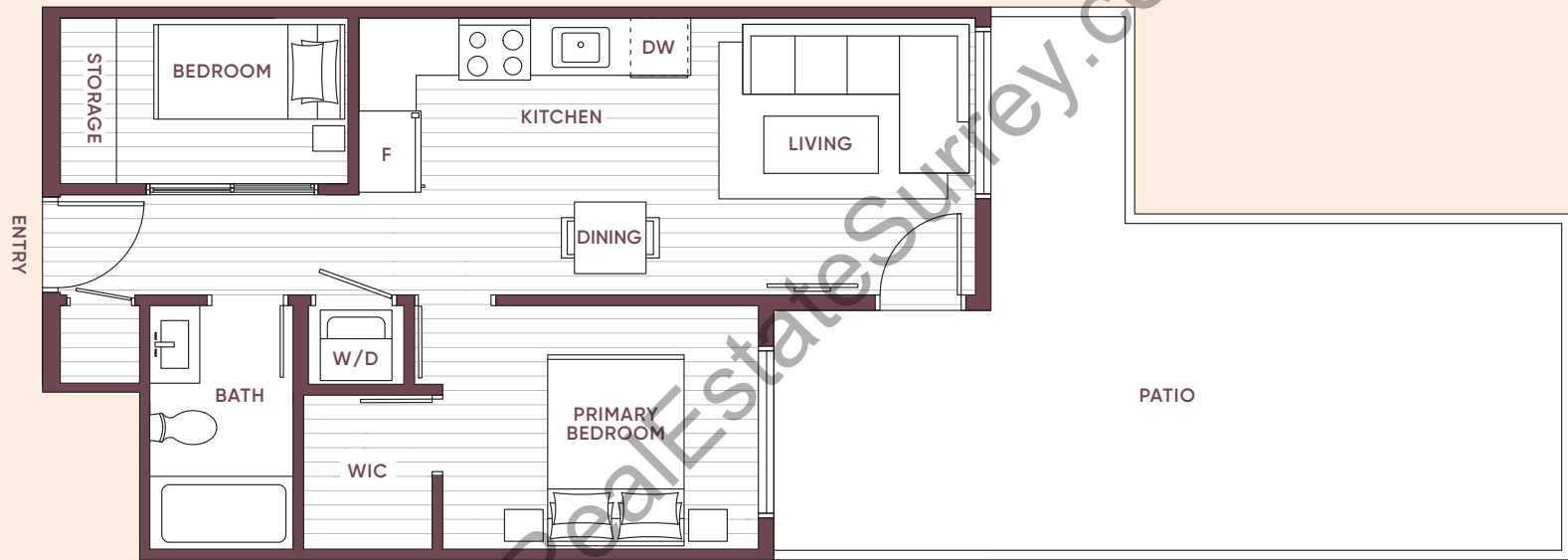
**MLA**  
CANADA

# A5

## JR 2 BED, 1 BATH

INTERIOR: 555 SQ FT | EXTERIOR: 350 SQ FT | TOTAL: 905 SQ FT

# Stowa



LEVEL 6

LifeAtStowa.com

The developer reserves the right to make changes, modifications or substitutes to the building design, specifications and floorplans should they be necessary. Renderings, views, and layouts are for illustration purposes only. This is not an offering for sale and such an offering can only be made after filing a disclosure statement. Sales powered by MLA Canada Realty. E.&O.E. Genaris Properties Inc. (1323028 B.C. LTD.)

**GENARIS**  
PROPERTIES

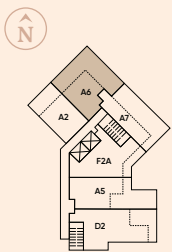
**MLA**  
CANADA

# A6

## 1 BED, 1 BATH

INTERIOR: 440 SQ FT | EXTERIOR: 539 SQ FT | TOTAL: 979 SQ FT

# Stowa



LEVEL 6

**LifeAtStowa.com**

The developer reserves the right to make changes, modifications or substitutes to the building design, specifications and floorplans should they be necessary. Renderings, views, and layouts are for illustration purposes only. This is not an offering for sale and such an offering can only be made after filing a disclosure statement. Sales powered by MLA Canada Realty. E.&O.E. Genaris Properties Inc. (1323028 B.C. LTD.)

**GENARIS**  
PROPERTIES

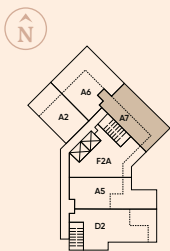
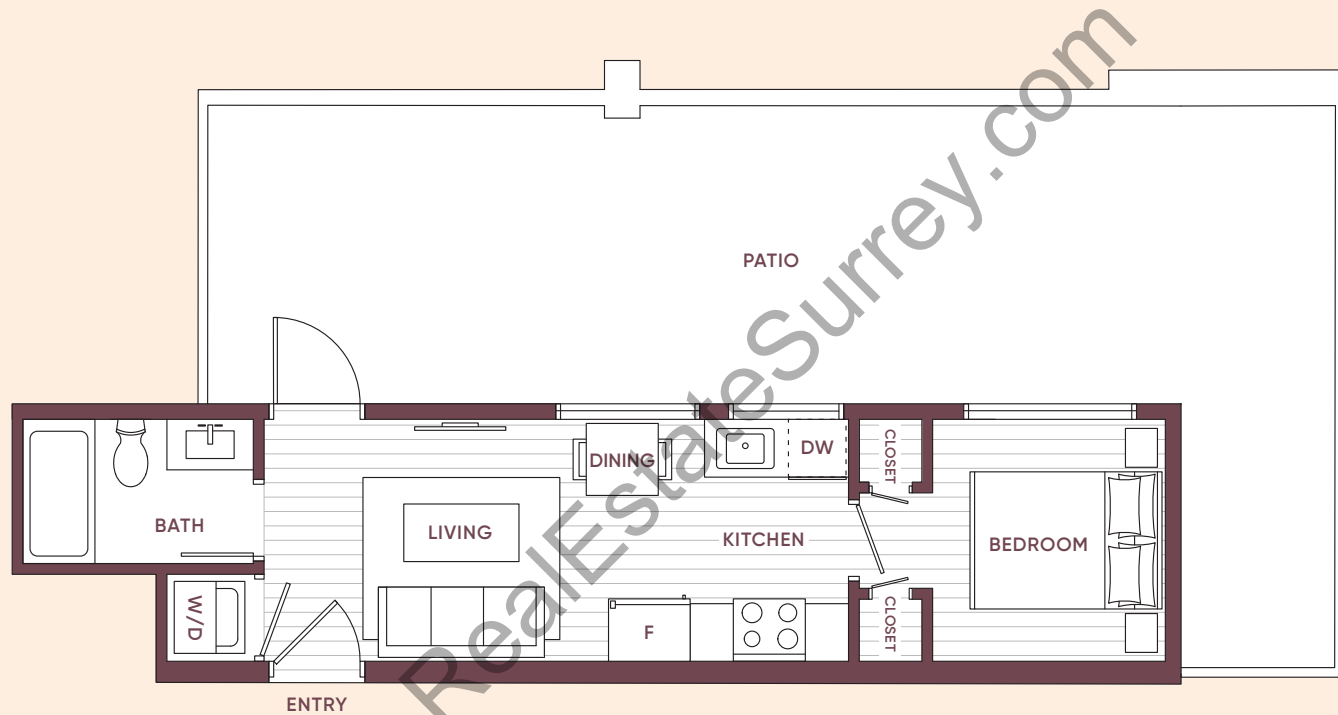
**MLA**  
CANADA

# A7

## 1 BED, 1 BATH

INTERIOR: 369 SQ FT | EXTERIOR: 465 SQ FT | TOTAL: 834 SQ FT

# Stowa



LEVEL 6

**LifeAtStowa.com**

The developer reserves the right to make changes, modifications or substitutes to the building design, specifications and floorplans should they be necessary. Renderings, views, and layouts are for illustration purposes only. This is not an offering for sale and such an offering can only be made after filing a disclosure statement. Sales powered by MLA Canada Realty. E.&O.E. Genaris Properties Inc. (1323028 B.C. LTD.)

**GENARIS**  
PROPERTIES

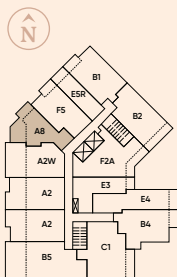
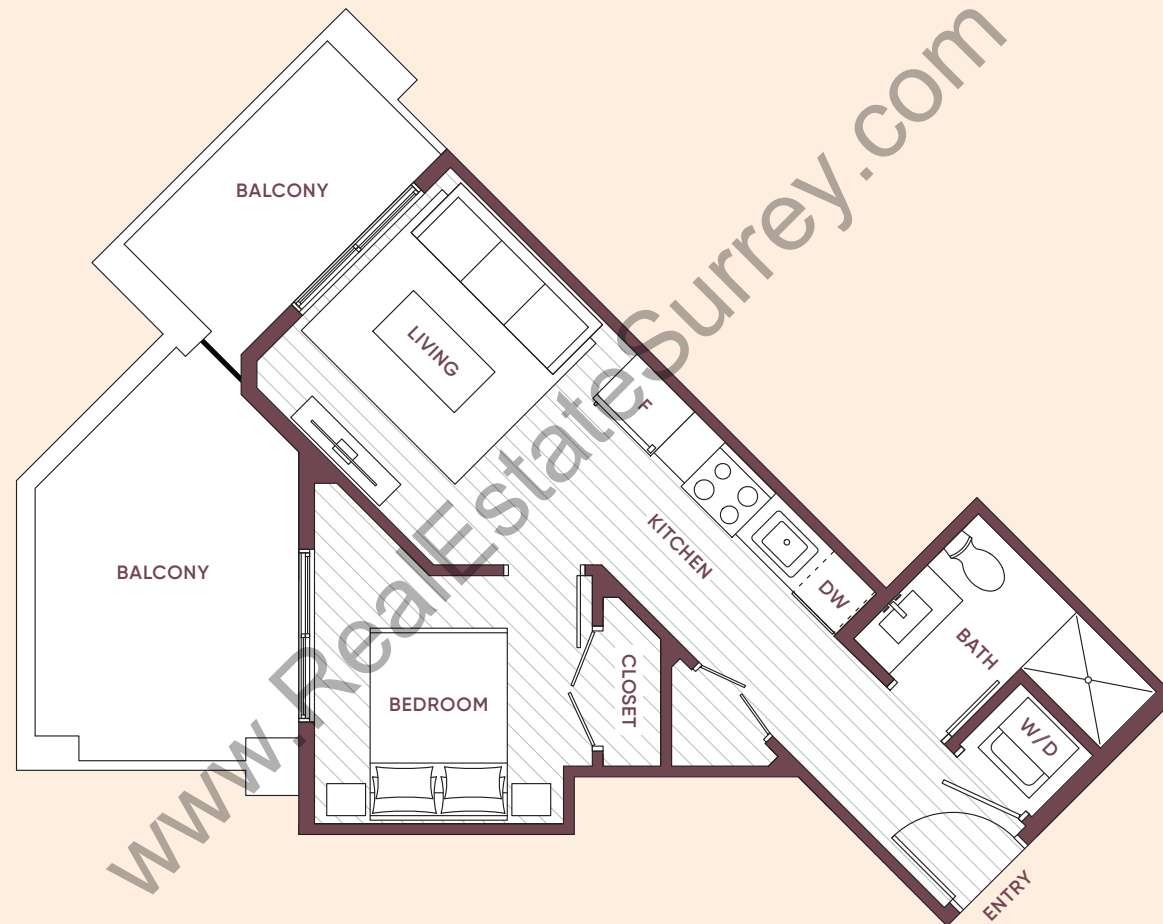
**MLA**  
CANADA

# A8

## 1 BED, 1 BATH

INTERIOR: 433 SQ FT | EXTERIOR: 165 SQ FT | TOTAL: 598 SQ FT

# Stowa



LEVEL 5

**LifeAtStowa.com**

The developer reserves the right to make changes, modifications or substitutes to the building design, specifications and floorplans should they be necessary. Renderings, views, and layouts are for illustration purposes only. This is not an offering for sale and such an offering can only be made after filing a disclosure statement. Sales powered by MLA Canada Realty. E.&O.E. Genaris Properties Inc. (1323028 B.C. LTD.)

**GENARIS**  
PROPERTIES

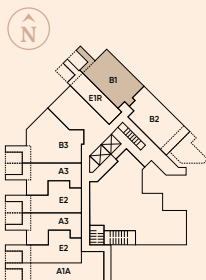
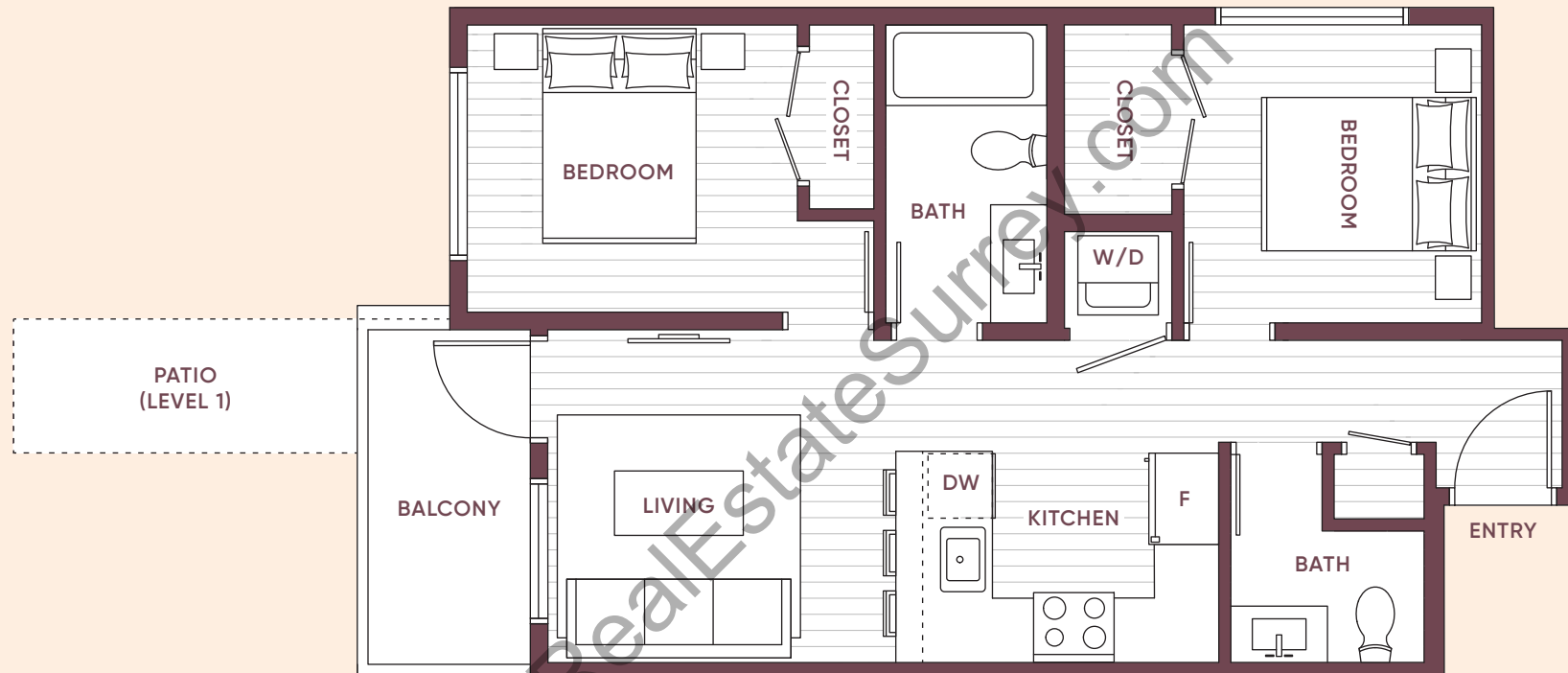
**MLA**  
CANADA

# B1

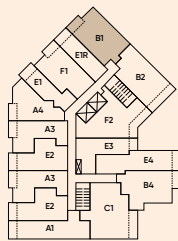
## 2 BED, 1.5 BATH

INTERIOR: 650 SQ FT | EXTERIOR: 50-89 SQ FT | TOTAL: 700-739 SQ FT

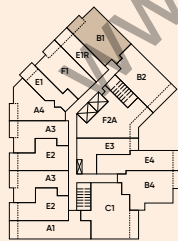
# Stowa



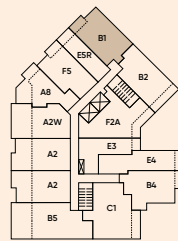
LEVEL 1



LEVEL 2



LEVELS 3-4



LEVEL 5

**GENARIS**  
PROPERTIES

**MLA**  
CANADA

**LifeAtStowa.com**

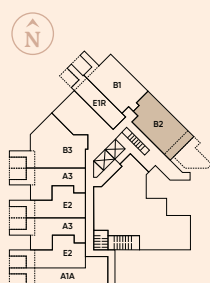
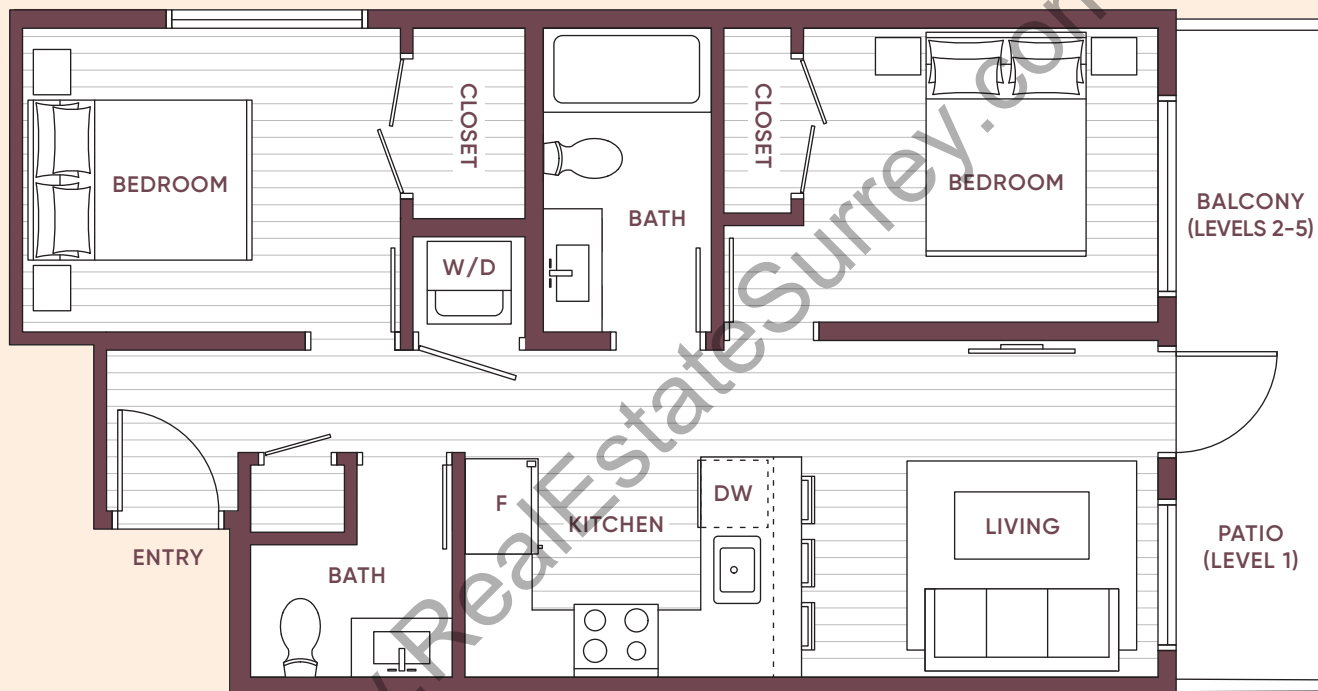
The developer reserves the right to make changes, modifications or substitutes to the building design, specifications and floorplans should they be necessary. Renderings, views, and layouts are for illustration purposes only. This is not an offering for sale and such an offering can only be made after filing a disclosure statement. Sales powered by MLA Canada Realty. E.&O.E. Genaris Properties Inc. (1323028 B.C. LTD.)

# B2

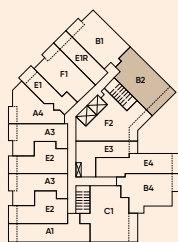
## 2 BED, 1.5 BATH

INTERIOR: 664-668 SQ FT | EXTERIOR: 86 SQ FT | TOTAL: 750-754 SQ FT

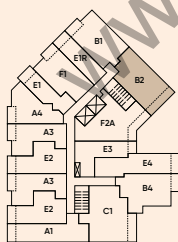
# Stowa



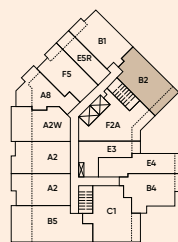
LEVEL 1



LEVEL 2



LEVELS 3-4



LEVEL 5

LifeAtStowa.com

The developer reserves the right to make changes, modifications or substitutes to the building design, specifications and floorplans should they be necessary. Renderings, views, and layouts are for illustration purposes only. This is not an offering for sale and such an offering can only be made after filing a disclosure statement. Sales powered by MLA Canada Realty. E.&O.E. Genaris Properties Inc. (1323028 B.C. LTD.)

GENARIS  
PROPERTIES

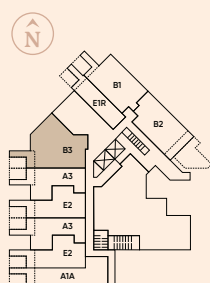
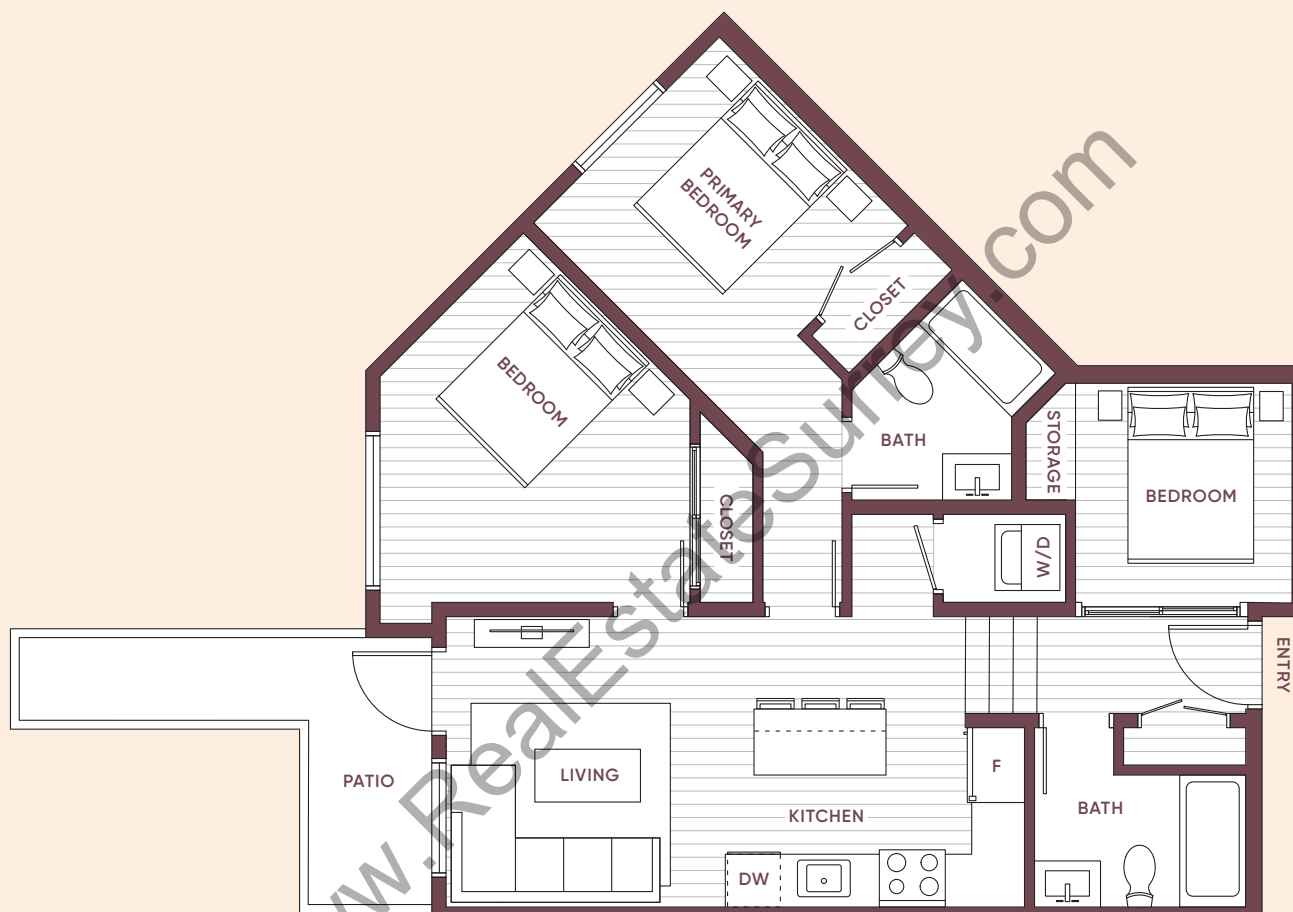
MLA  
CANADA

# B3

## JR 3 BED, 2 BATH

INTERIOR: 878 SQ FT | EXTERIOR: 87 SQ FT | TOTAL: 965 SQ FT

# Stowa



LEVEL 1

**LifeAtStowa.com**

The developer reserves the right to make changes, modifications or substitutes to the building design, specifications and floorplans should they be necessary. Renderings, views, and layouts are for illustration purposes only. This is not an offering for sale and such an offering can only be made after filing a disclosure statement. Sales powered by MLA Canada Realty. E.&O.E. Genaris Properties Inc. (1323028 B.C. LTD.)

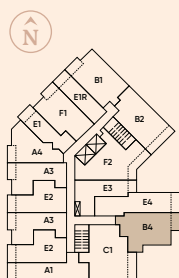
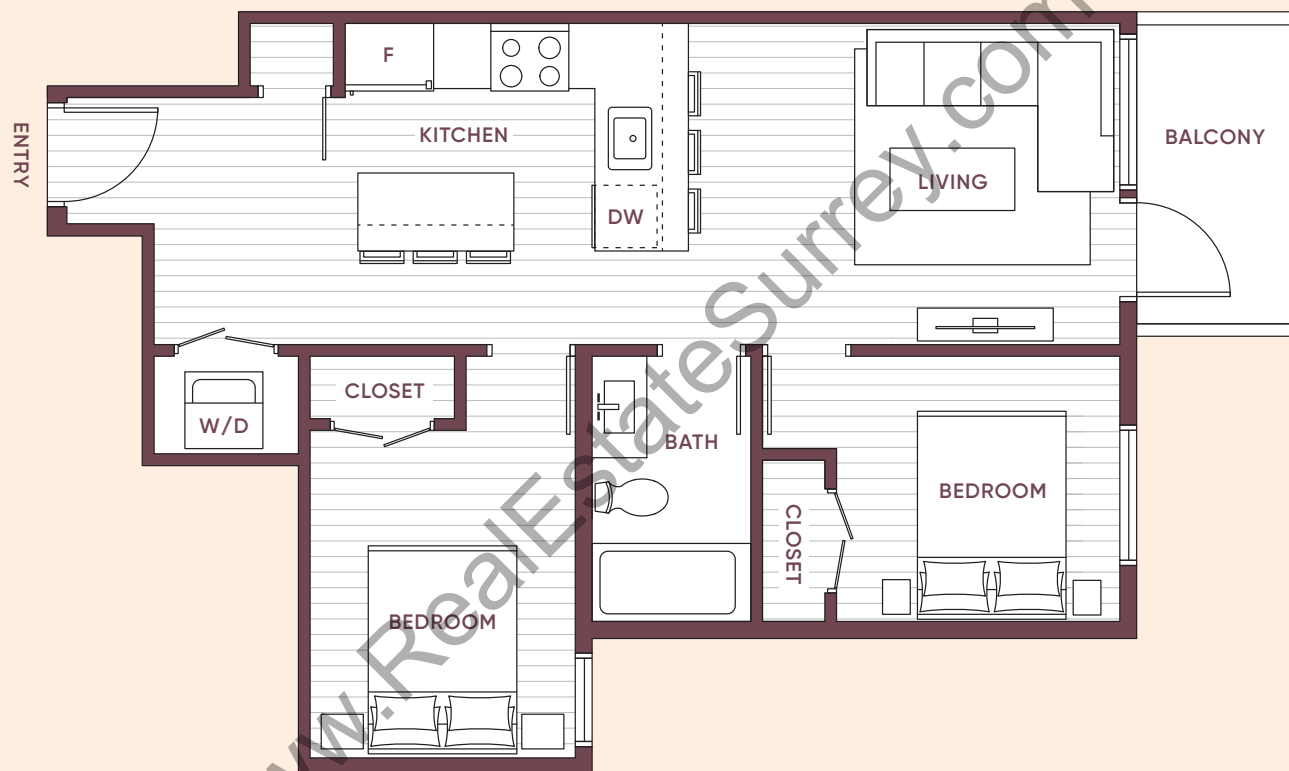


# B4

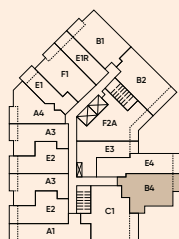
## 2 BED, 1 BATH

INTERIOR: 660 SQ FT | EXTERIOR: 50 SQ FT | TOTAL: 710 SQ FT

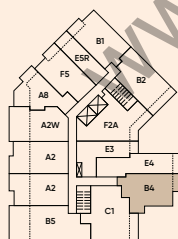
# Stowa



LEVEL 2



LEVELS 3-4



LEVEL 5

**LifeAtStowa.com**

The developer reserves the right to make changes, modifications or substitutes to the building design, specifications and floorplans should they be necessary. Renderings, views, and layouts are for illustration purposes only. This is not an offering for sale and such an offering can only be made after filing a disclosure statement. Sales powered by MLA Canada Realty. E.&O.E. Genaris Properties Inc. (1323028 B.C. LTD.)

**GENARIS**  
PROPERTIES

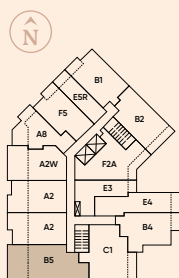
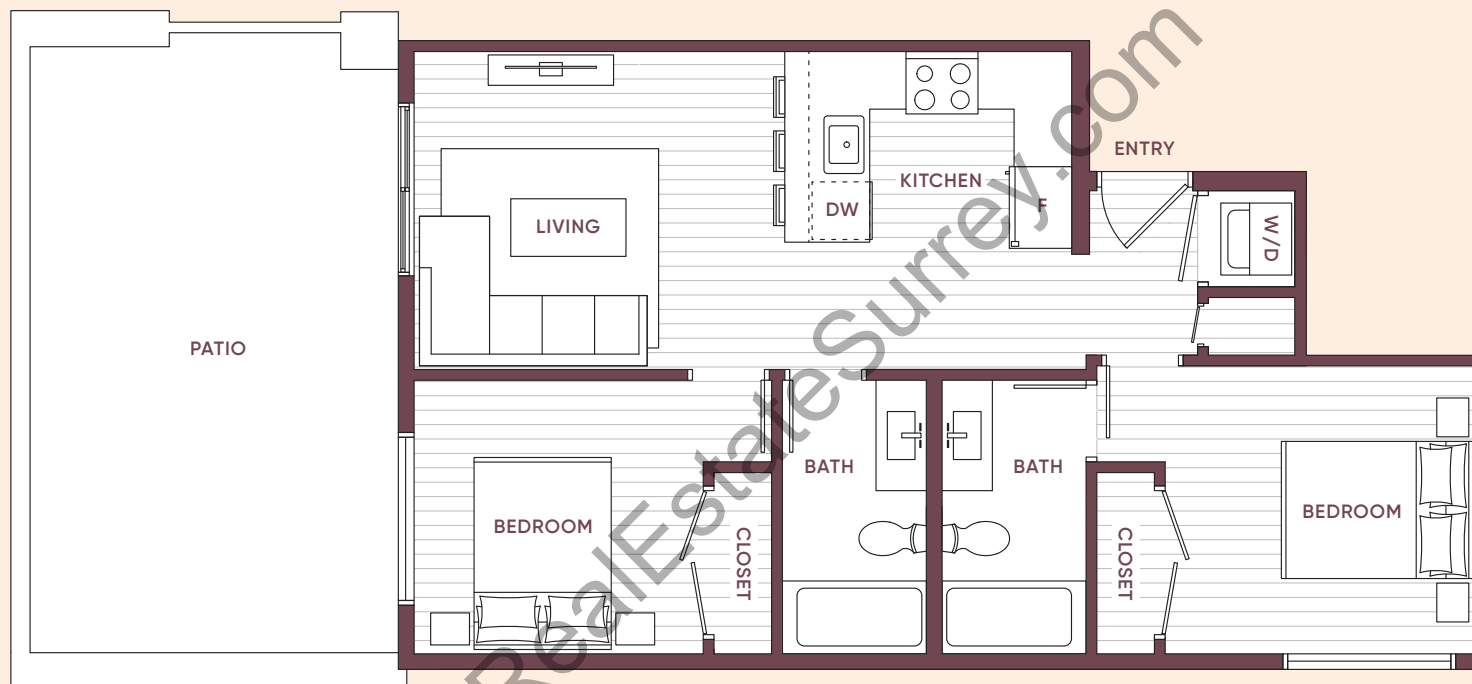
**MLA**  
CANADA

# B5

## 2 BED, 2 BATH

INTERIOR: 723 SQ FT | EXTERIOR: 280 SQ FT | TOTAL: 1,003 SQ FT

# Stowa



LEVEL 5

**LifeAtStowa.com**

The developer reserves the right to make changes, modifications or substitutes to the building design, specifications and floorplans should they be necessary. Renderings, views, and layouts are for illustration purposes only. This is not an offering for sale and such an offering can only be made after filing a disclosure statement. Sales powered by MLA Canada Realty. E.&O.E. Genaris Properties Inc. (1323028 B.C. LTD.)

**GENARIS**  
PROPERTIES

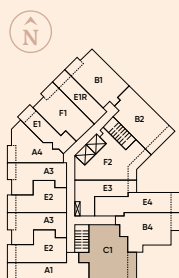
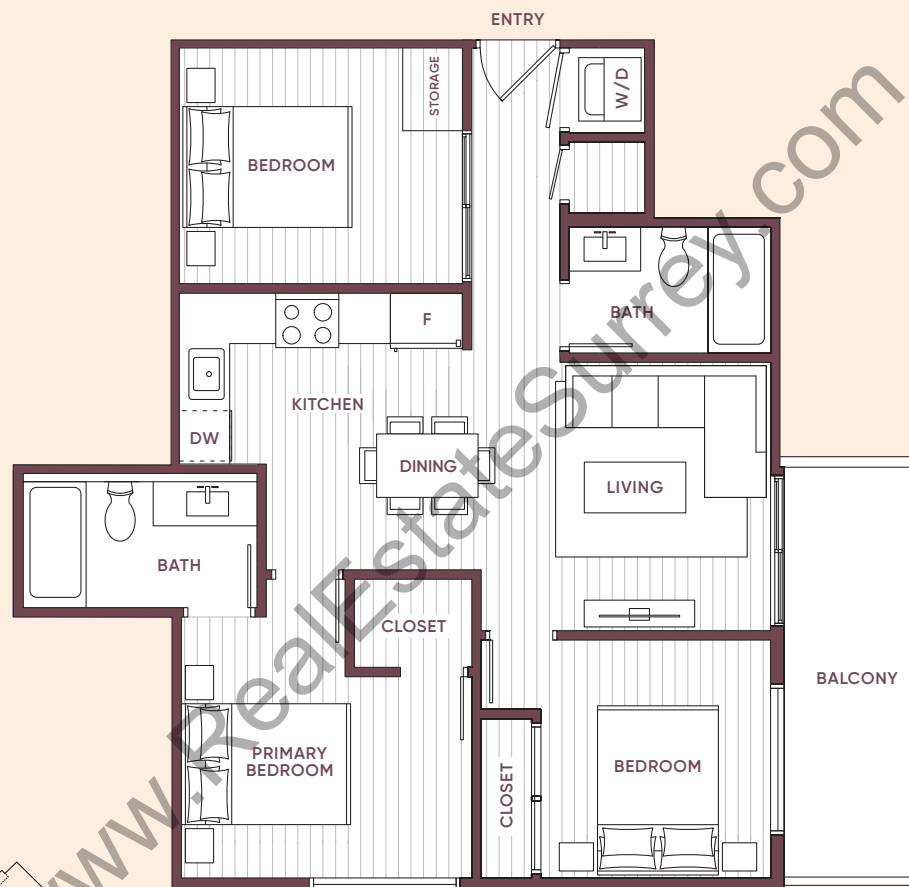
**MLA**  
CANADA

# C1

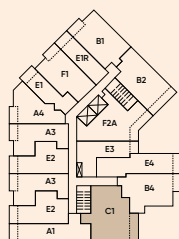
## JR 3 BED, 2 BATH

INTERIOR: 837 SQ FT | EXTERIOR: 82 SQ FT | TOTAL: 919 SQ FT

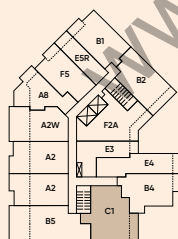
# Stowa



LEVEL 2



LEVELS 3-4



LEVEL 5

**LifeAtStowa.com**

The developer reserves the right to make changes, modifications or substitutes to the building design, specifications and floorplans should they be necessary. Renderings, views, and layouts are for illustration purposes only. This is not an offering for sale and such an offering can only be made after filing a disclosure statement. Sales powered by MLA Canada Realty. E.&O.E. Genaris Properties Inc. (1323028 B.C. LTD.)

**GENARIS**  
PROPERTIES

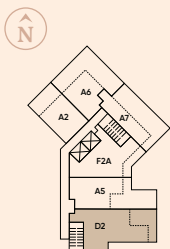
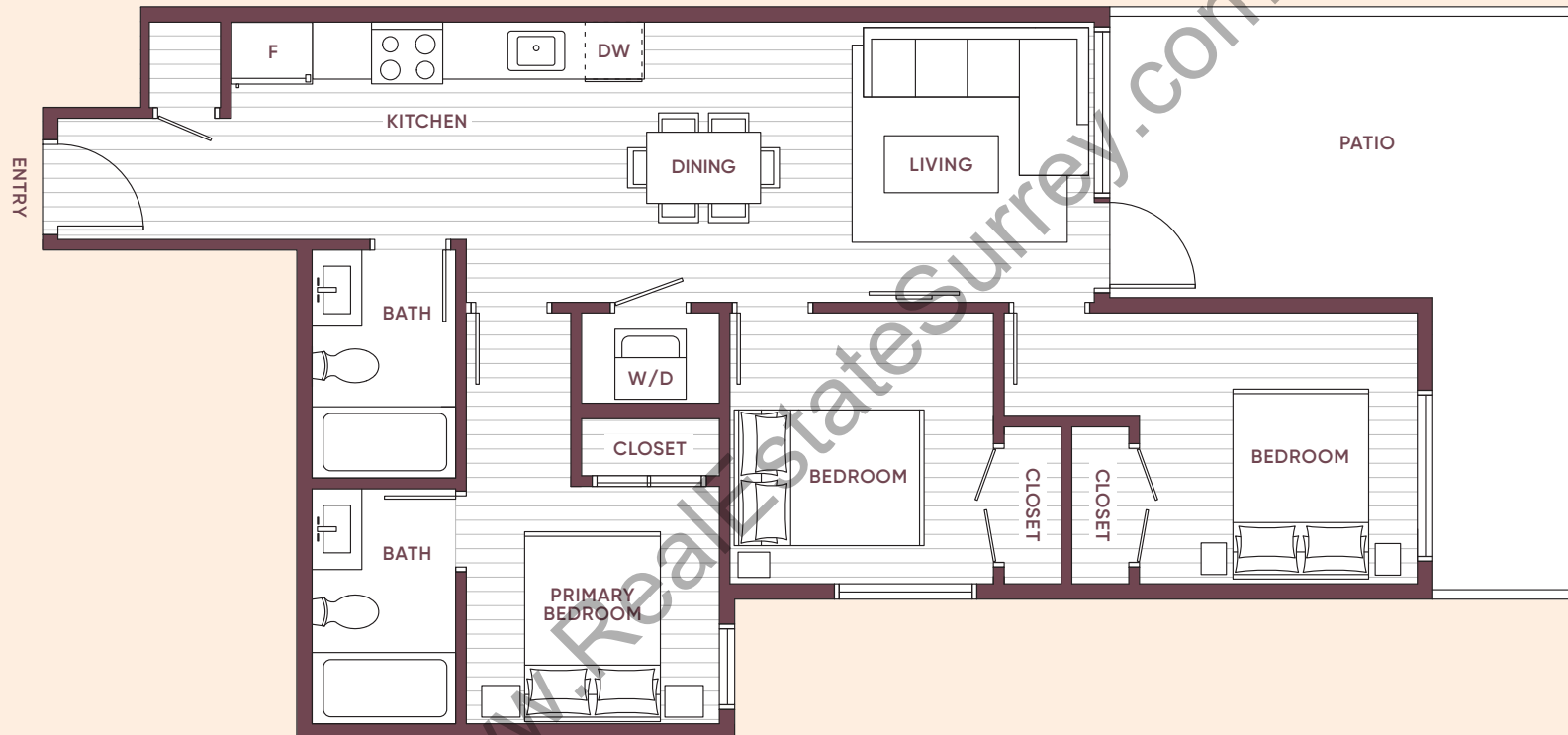
**MLA**  
CANADA

# D2

## 3 BED, 2 BATH

INTERIOR: 863 SQ FT | EXTERIOR: 209 SQ FT | TOTAL: 1,072 SQ FT

# Stowa



LEVEL 6

LifeAtStowa.com

The developer reserves the right to make changes, modifications or substitutes to the building design, specifications and floorplans should they be necessary. Renderings, views, and layouts are for illustration purposes only. This is not an offering for sale and such an offering can only be made after filing a disclosure statement. Sales powered by MLA Canada Realty. E.&O.E. Genaris Properties Inc. (1323028 B.C. LTD.)

**GENARIS**  
PROPERTIES

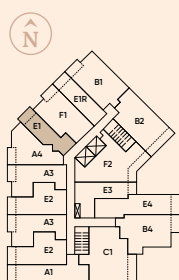
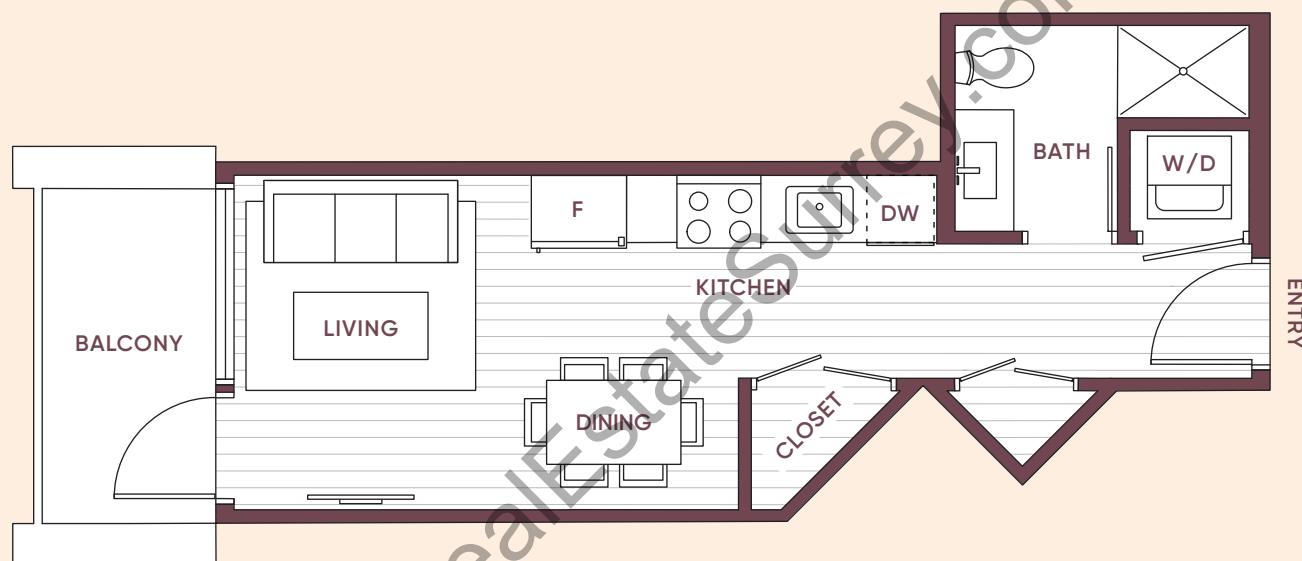
**MLA**  
CANADA

# E1

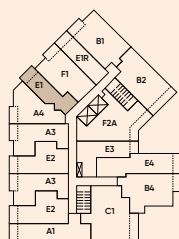
## STUDIO, 1 BATH

INTERIOR: 339 SQ FT | EXTERIOR: 50 SQ FT | TOTAL: 389 SQ FT

# Stowa



LEVEL 2



LEVELS 3-4

LifeAtStowa.com

The developer reserves the right to make changes, modifications or substitutes to the building design, specifications and floorplans should they be necessary. Renderings, views, and layouts are for illustration purposes only. This is not an offering for sale and such an offering can only be made after filing a disclosure statement. Sales powered by MLA Canada Realty. E.&O.E. Genaris Properties Inc. (1323028 B.C. LTD.)

**GENARIS**  
PROPERTIES

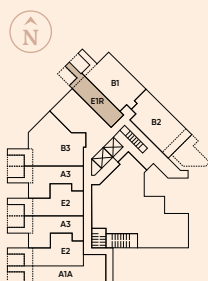
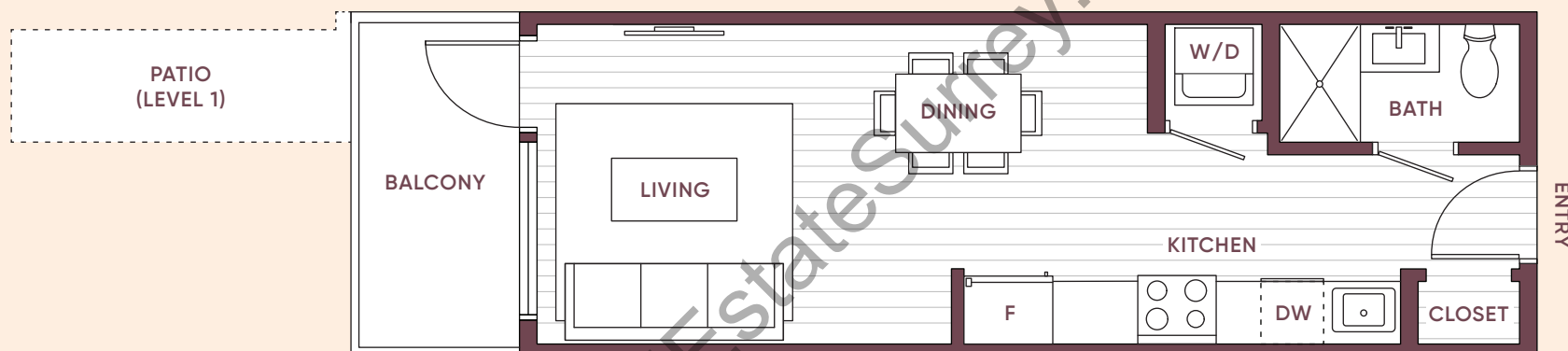
**MLA**  
CANADA

# E1R

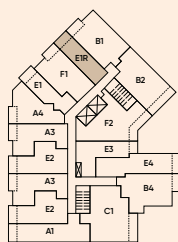
## STUDIO, 1 BATH

INTERIOR: 337-349 SQ FT | EXTERIOR: 54-86 SQ FT | TOTAL: 391-435 SQ FT

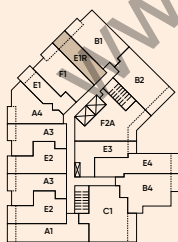
# Stowa



LEVEL 1



LEVEL 2



LEVELS 3-4

**LifeAtStowa.com**

The developer reserves the right to make changes, modifications or substitutes to the building design, specifications and floorplans should they be necessary. Renderings, views, and layouts are for illustration purposes only. This is not an offering for sale and such an offering can only be made after filing a disclosure statement. Sales powered by MLA Canada Realty. E.&O.E. Genaris Properties Inc. (1323028 B.C. LTD.)

**GENARIS**  
PROPERTIES

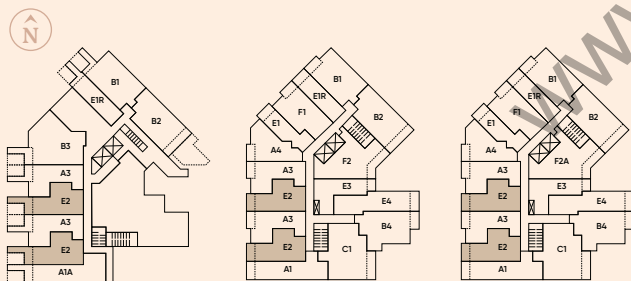
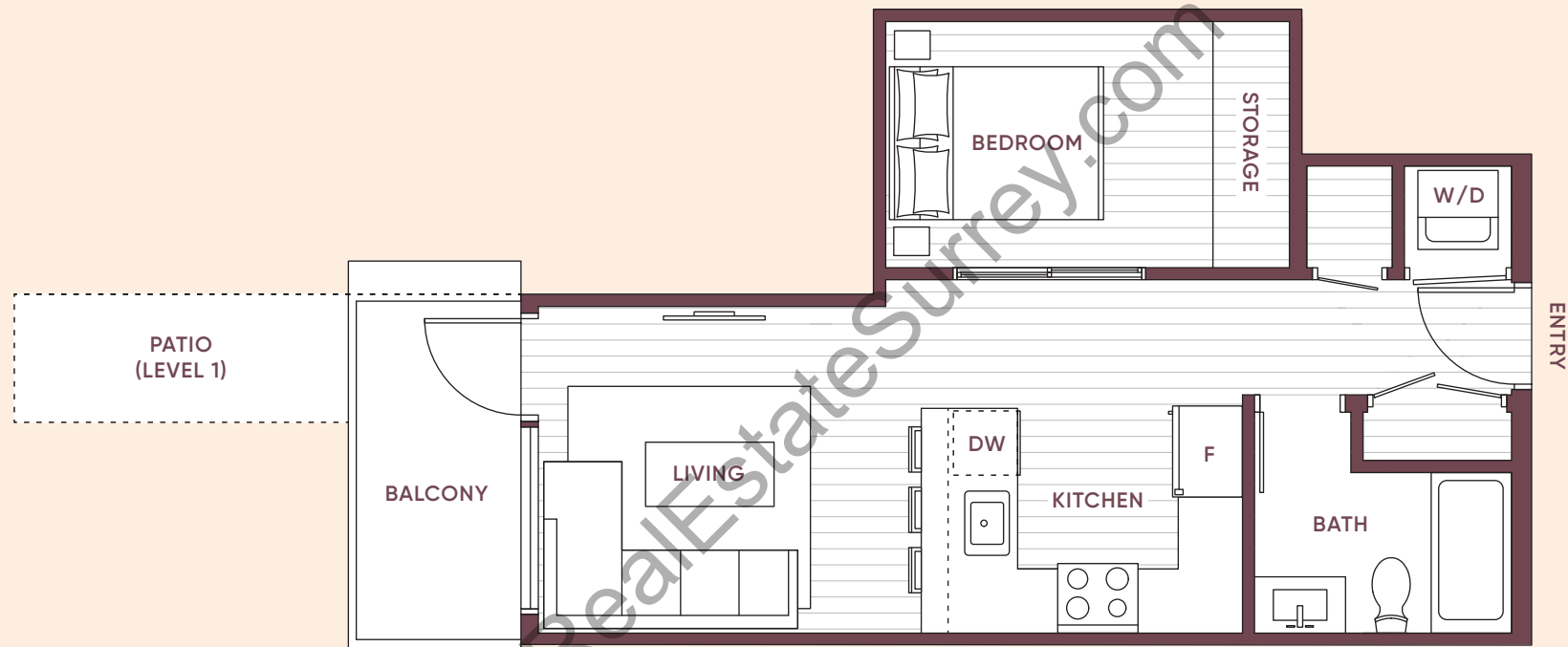
**MLA**  
CANADA

# E2

## JR 1 BED, 1 BATH

INTERIOR: 490-492 SQ FT | EXTERIOR: 50-87 SQ FT | TOTAL: 540-579 SQ FT

# Stowa



LEVEL 1

LEVEL 2

LEVELS 3-4

LifeAtStowa.com

The developer reserves the right to make changes, modifications or substitutes to the building design, specifications and floorplans should they be necessary. Renderings, views, and layouts are for illustration purposes only. This is not an offering for sale and such an offering can only be made after filing a disclosure statement. Sales powered by MLA Canada Realty. E.&O.E. Genaris Properties Inc. (1323028 B.C. LTD.)

**GENARIS**  
PROPERTIES

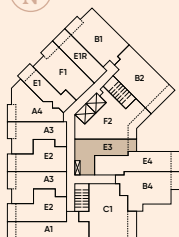
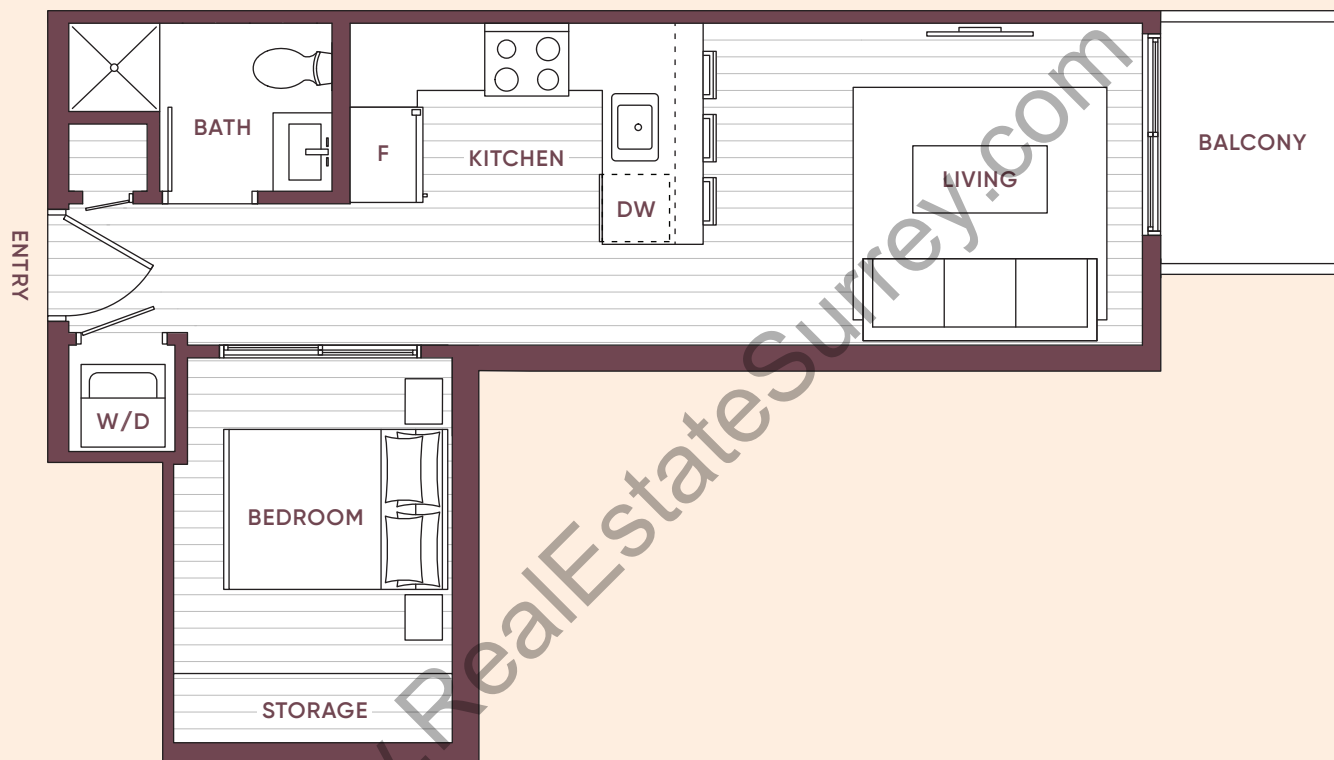
**MLA**  
CANADA

# E3

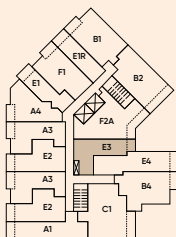
## JR 1 BED, 1 BATH

INTERIOR: 466 SQ FT | EXTERIOR: 40 SQ FT | TOTAL: 506 SQ FT

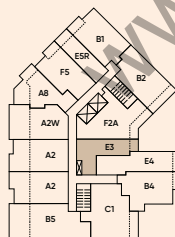
# Stowa



LEVEL 2



LEVELS 3-4



LEVEL 5

**LifeAtStowa.com**

The developer reserves the right to make changes, modifications or substitutes to the building design, specifications and floorplans should they be necessary. Renderings, views, and layouts are for illustration purposes only. This is not an offering for sale and such an offering can only be made after filing a disclosure statement. Sales powered by MLA Canada Realty. E.&O.E. Genaris Properties Inc. (1323028 B.C. LTD.)

**GENARIS**  
PROPERTIES

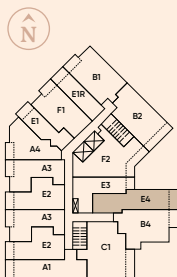
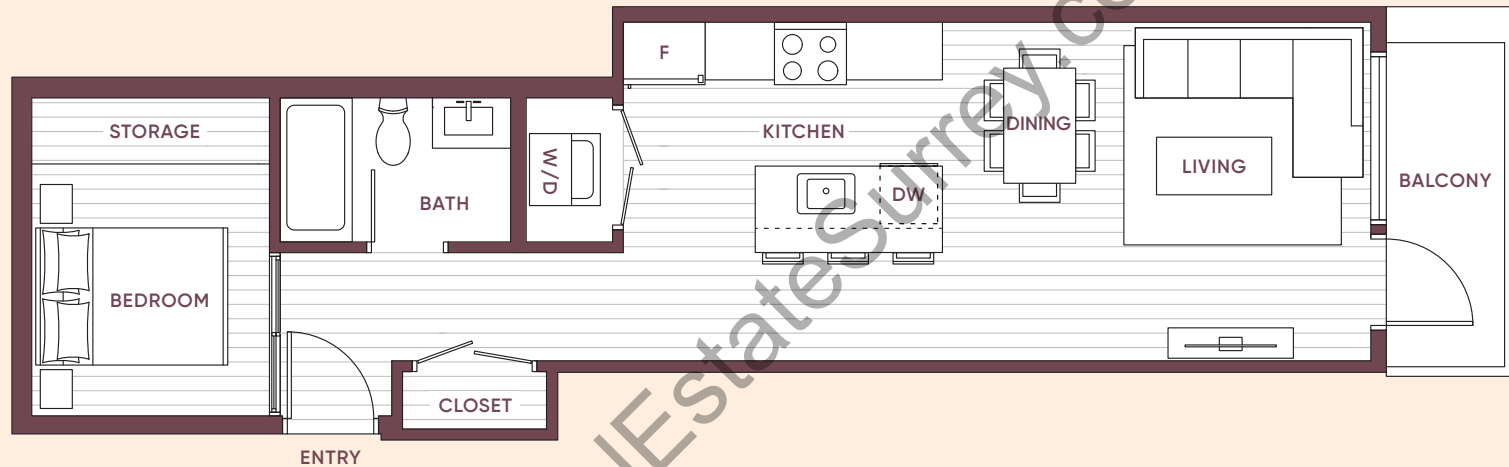
**MLA**  
CANADA

# E4

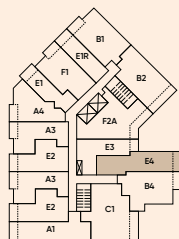
## JR 1 BED, 1 BATH

INTERIOR: 585 SQ FT | EXTERIOR: 58 SQ FT | TOTAL: 643 SQ FT

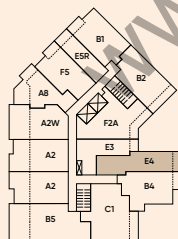
# Stowa



LEVEL 2



LEVELS 3-4



LEVEL 5

**LifeAtStowa.com**

The developer reserves the right to make changes, modifications or substitutes to the building design, specifications and floorplans should they be necessary. Renderings, views, and layouts are for illustration purposes only. This is not an offering for sale and such an offering can only be made after filing a disclosure statement. Sales powered by MLA Canada Realty. E.&O.E. Genaris Properties Inc. (1323028 B.C. LTD.)

**GENARIS**  
PROPERTIES

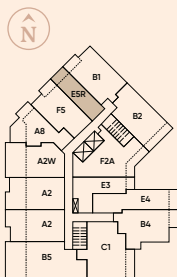
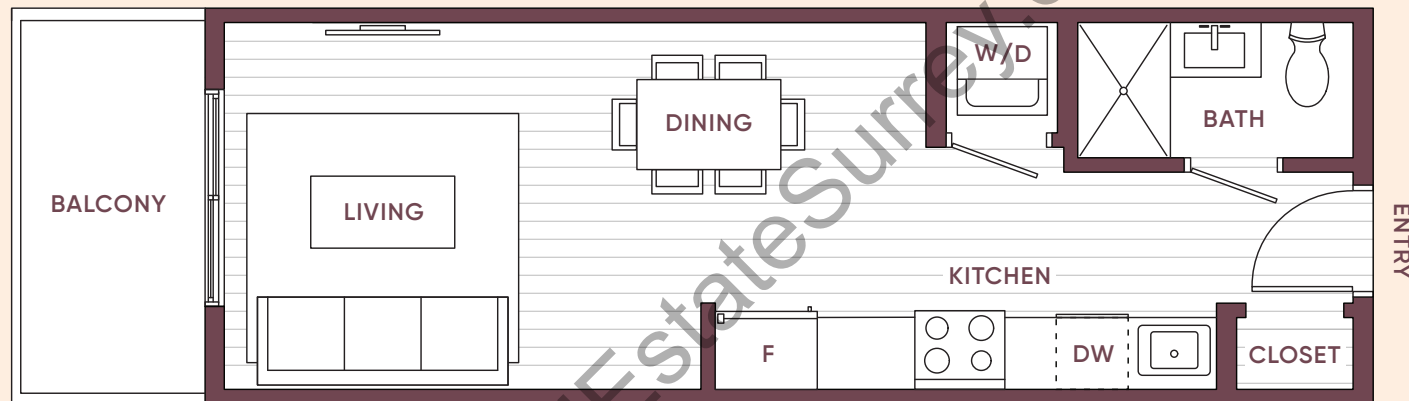
**MLA**  
CANADA

# E5R

## STUDIO, 1 BATH

INTERIOR: 333 SQ FT | EXTERIOR: 53 SQ FT | TOTAL: 386 SQ FT

# Stowa



LEVEL 5

**LifeAtStowa.com**

The developer reserves the right to make changes, modifications or substitutes to the building design, specifications and floorplans should they be necessary. Renderings, views, and layouts are for illustration purposes only. This is not an offering for sale and such an offering can only be made after filing a disclosure statement. Sales powered by MLA Canada Realty. E.&O.E. Genaris Properties Inc. (1323028 B.C. LTD.)

**GENARIS**  
PROPERTIES

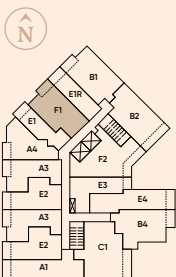
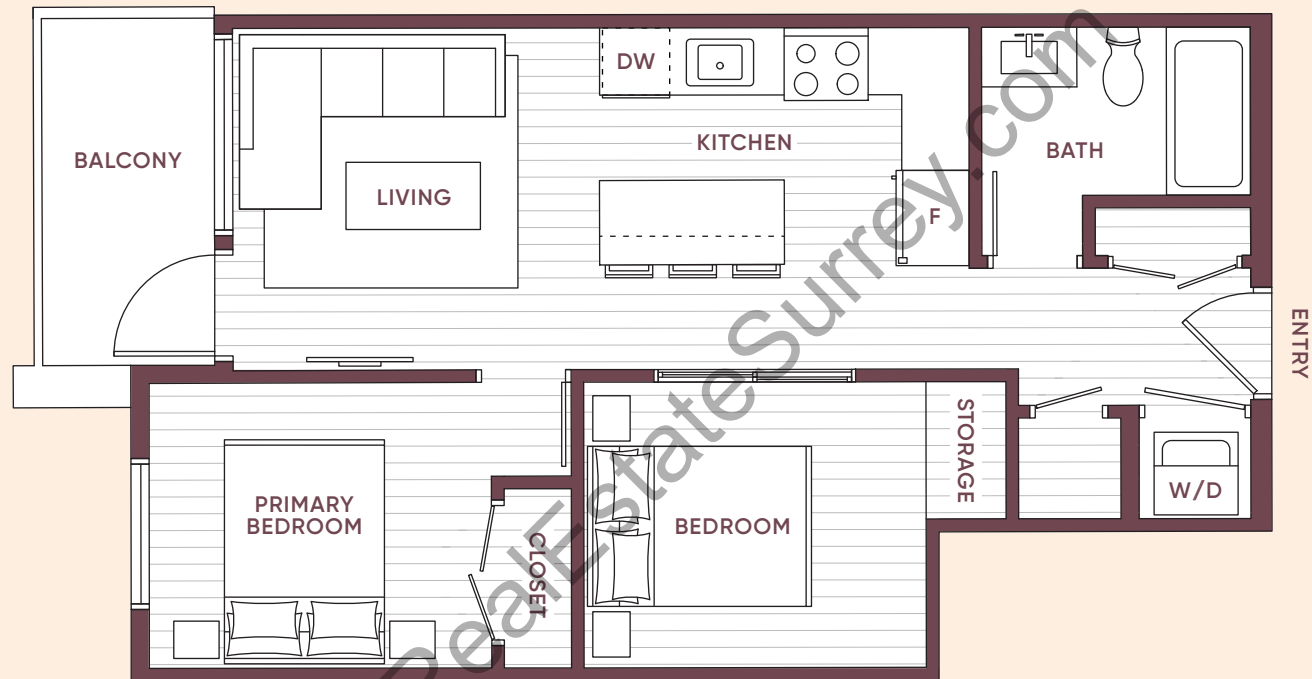
**MLA**  
CANADA

# F1

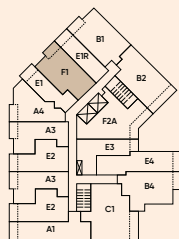
## JR 2 BED, 1 BATH

INTERIOR: 604 SQ FT | EXTERIOR: 50 SQ FT | TOTAL: 654 SQ FT

# Stowa



LEVEL 2



LEVELS 3-4

**LifeAtStowa.com**

The developer reserves the right to make changes, modifications or substitutes to the building design, specifications and floorplans should they be necessary. Renderings, views, and layouts are for illustration purposes only. This is not an offering for sale and such an offering can only be made after filing a disclosure statement. Sales powered by MLA Canada Realty. E.&O.E. Genaris Properties Inc. (1323028 B.C. LTD.)

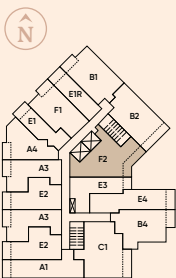
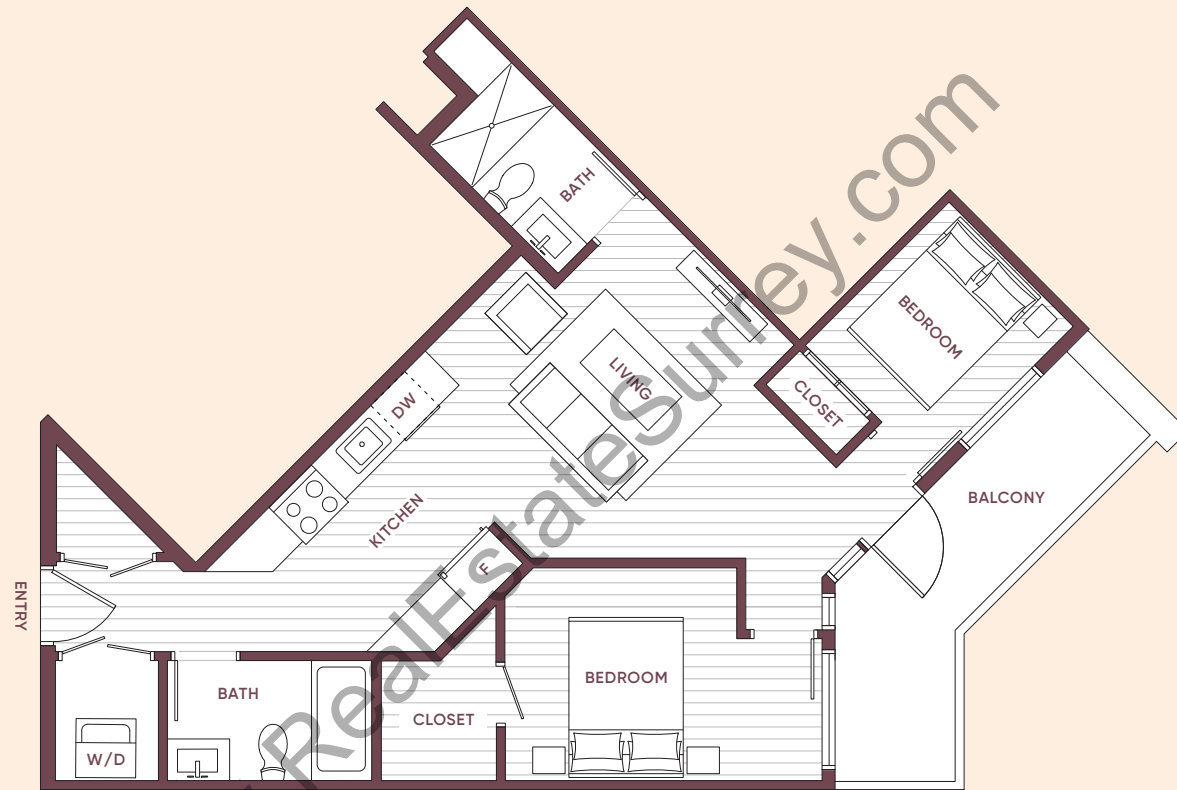


# F2

## 2 BED, 2 BATH

INTERIOR: 744 SQ FT | EXTERIOR: 97 SQ FT | TOTAL: 841 SQ FT

# Stowa



LEVEL 2

**LifeAtStowa.com**

The developer reserves the right to make changes, modifications or substitutes to the building design, specifications and floorplans should they be necessary. Renderings, views, and layouts are for illustration purposes only. This is not an offering for sale and such an offering can only be made after filing a disclosure statement. Sales powered by MLA Canada Realty. E.&O.E. Genaris Properties Inc. (1323028 B.C. LTD.)

**GENARIS**  
PROPERTIES

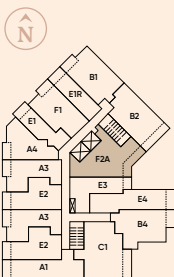
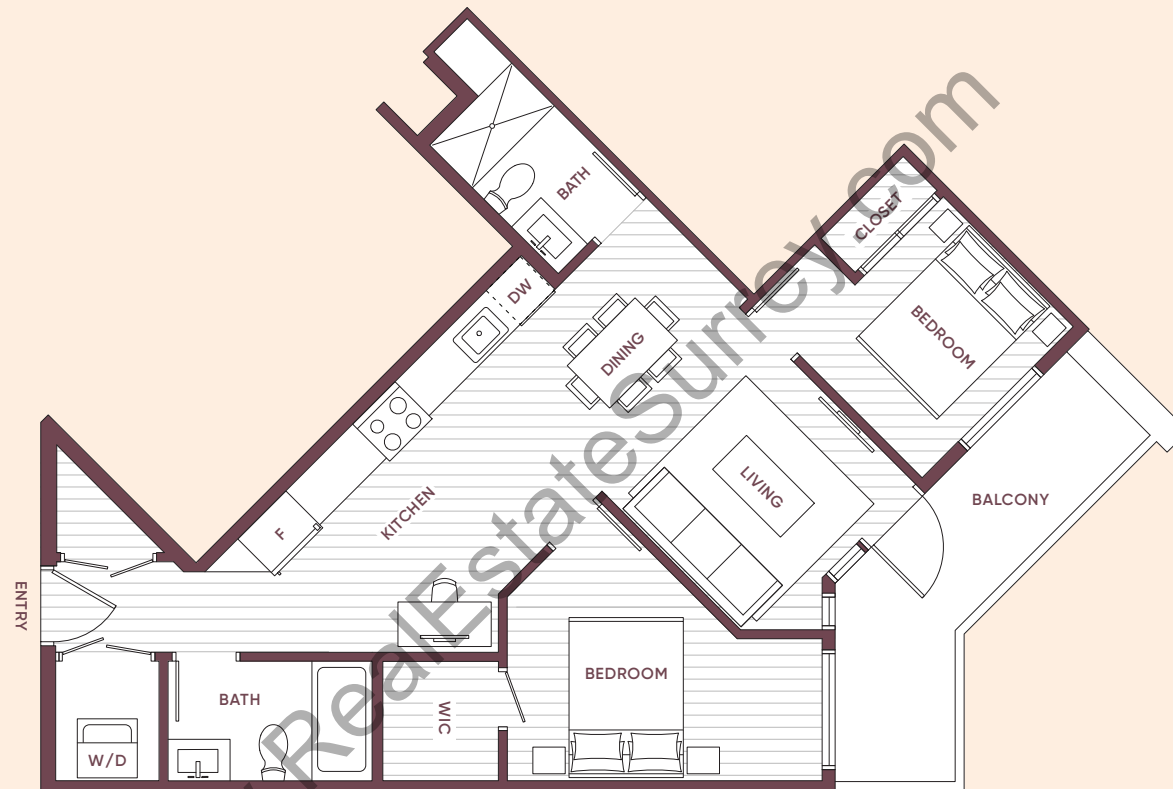
**MLA**  
CANADA

# F2A

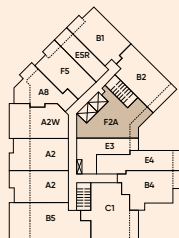
## 2 BED, 2 BATH

INTERIOR: 767 SQ FT | EXTERIOR: 100 SQ FT | TOTAL: 867 SQ FT

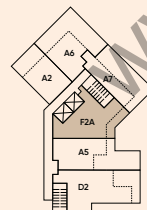
# Stowa



LEVELS 3-4



LEVEL 5



LEVEL 6

**LifeAtStowa.com**

The developer reserves the right to make changes, modifications or substitutes to the building design, specifications and floorplans should they be necessary. Renderings, views, and layouts are for illustration purposes only. This is not an offering for sale and such an offering can only be made after filing a disclosure statement. Sales powered by MLA Canada Realty. E.&O.E. Genaris Properties Inc. (1323028 B.C. LTD.)

**GENARIS**  
PROPERTIES

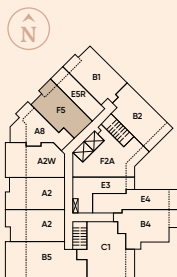
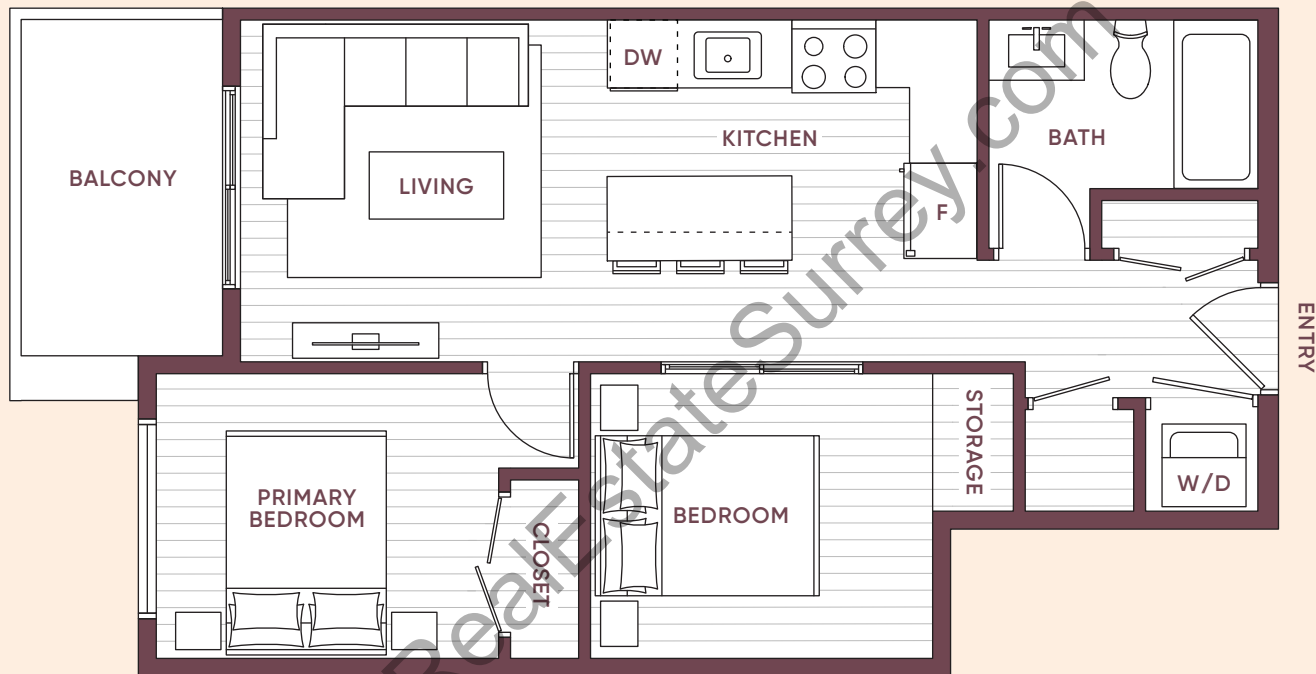
**MLA**  
CANADA

# F5

## JR 2 BED, 1 BATH

INTERIOR: 603 SQ FT | EXTERIOR: 60 SQ FT | TOTAL: 663 SQ FT

# Stowa



LEVEL 5

LifeAtStowa.com

The developer reserves the right to make changes, modifications or substitutes to the building design, specifications and floorplans should they be necessary. Renderings, views, and layouts are for illustration purposes only. This is not an offering for sale and such an offering can only be made after filing a disclosure statement. Sales powered by MLA Canada Realty. E.&O.E. Genaris Properties Inc. (1323028 B.C. LTD.)

**GENARIS**  
PROPERTIES

**MLA**  
CANADA