

VANTAGE

Life never looked so good.

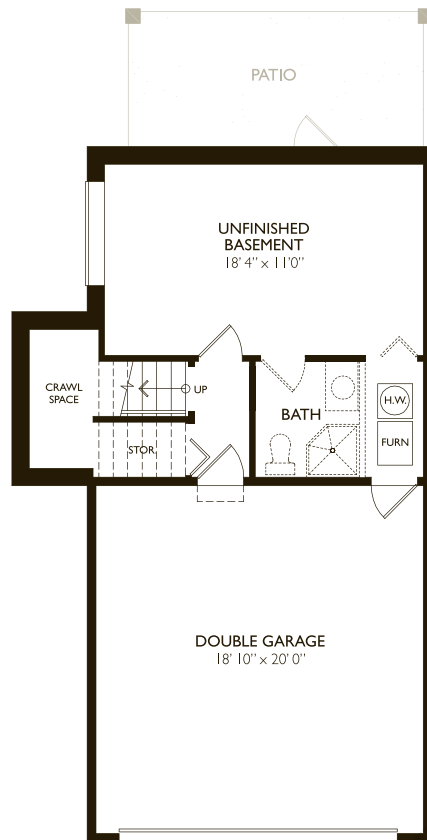
PLAN A & AI

TOWNHOME COLLECTION

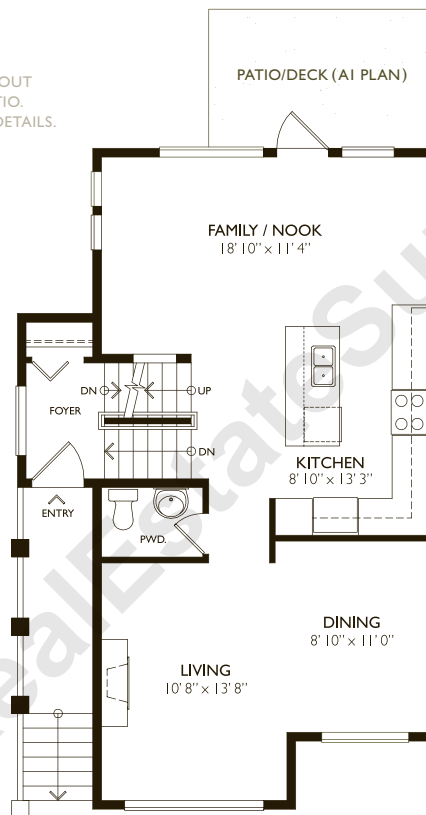
1525 SF + 427 SF Unfinished

Total Approx. 1952 SF

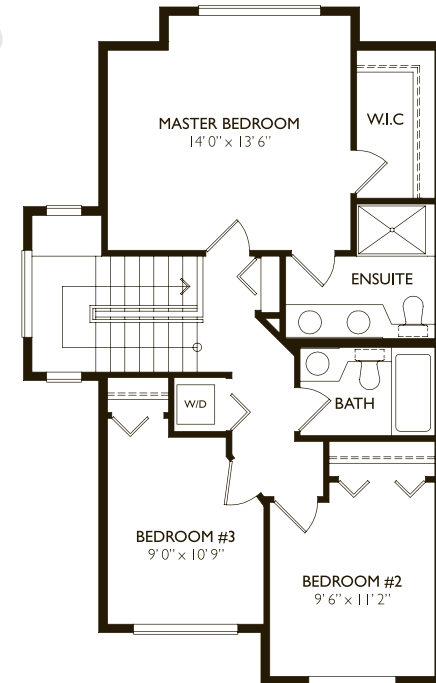
3 Bedroom 3 Bathroom



PLAN AI HAS WALKOUT BASEMENT AND PATIO. SEE SALES REP FOR DETAILS.



PLAN AI HAS WINDOW AS SHOWN. SEE SALES REP FOR DETAILS.



LOWER
427 SF

MAIN
759 SF

UPPER
766 SF

VANTAGE

Life never looked so good.

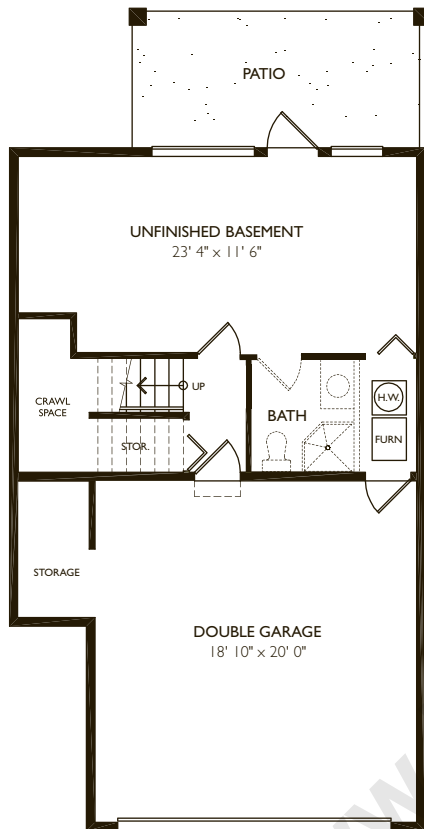
PLAN A2

TOWNHOME COLLECTION

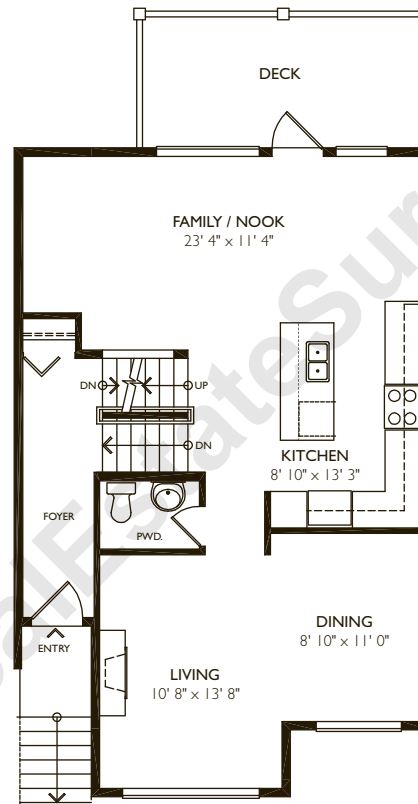
1603 SF + 468 SF Unfinished

Total Approx. 2071 SF

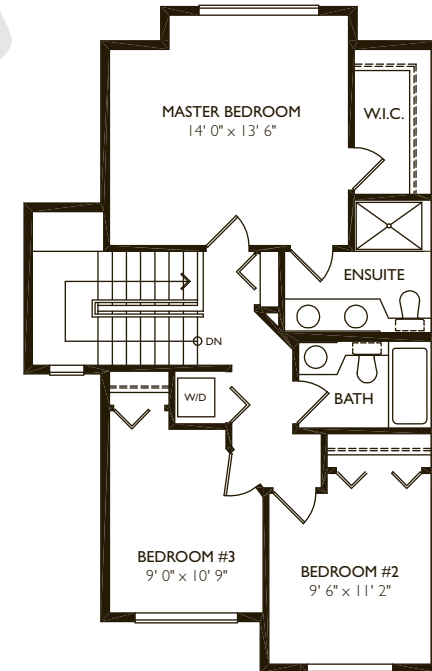
3 Bedroom 3 Bathroom



LOWER
468 SF



MAIN
837 SF



UPPER
766 SF

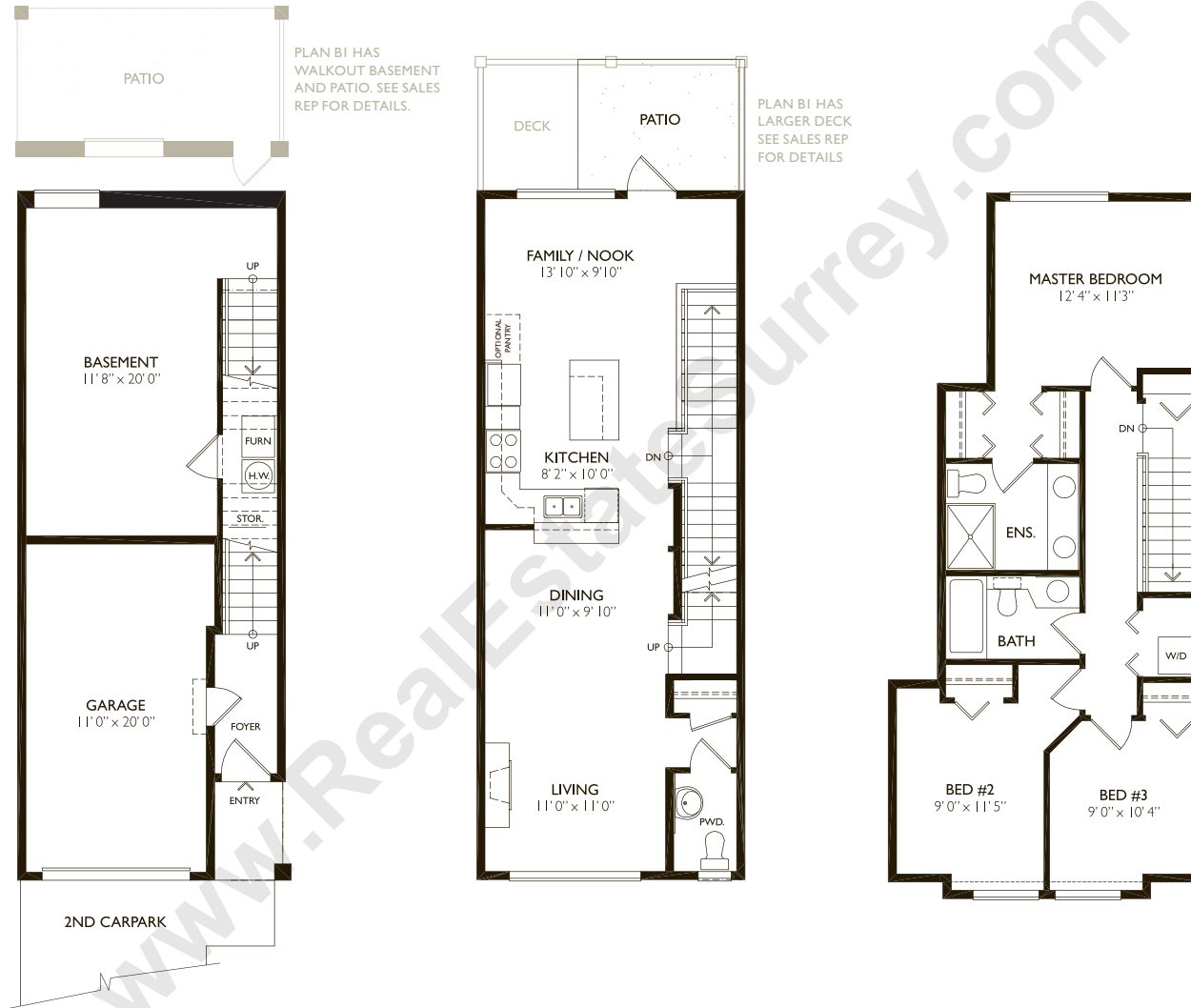
VANTAGE

Life never looked so good.

PLAN B & BI

TOWNHOME COLLECTION

1767 SF 3 Bedroom 3 Bathroom



LOWER
409 SF

MAIN
672 SF

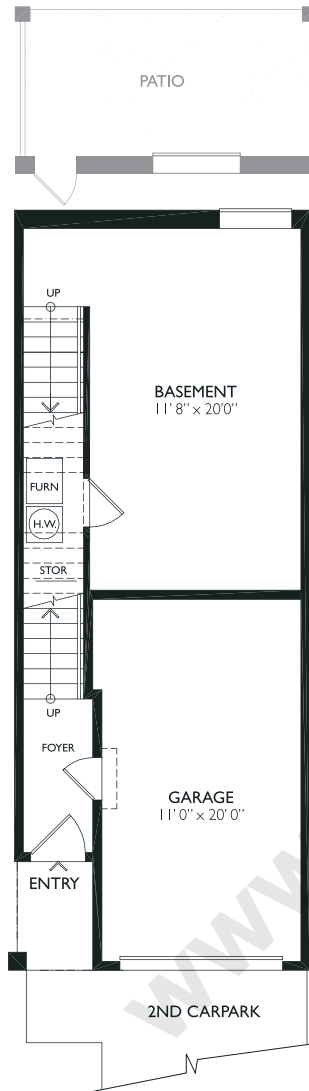
UPPER
686 SF

VANTAGE

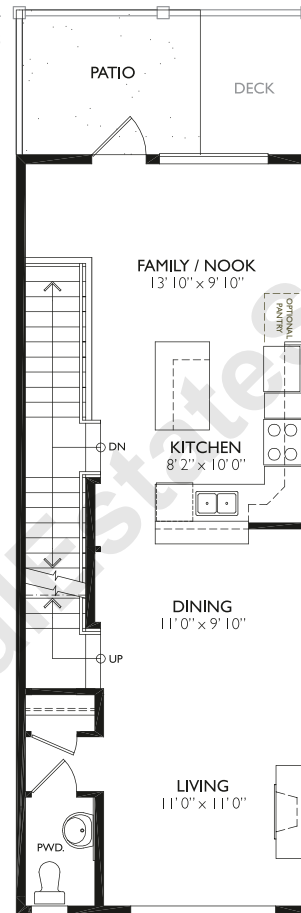
Life never looked so good.

PLAN C & CI TOWNHOME COLLECTION

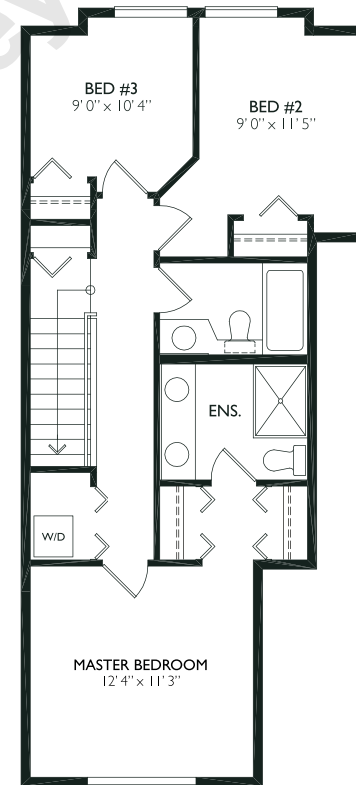
1767 SF 3 Bedroom 3 Bathroom



PLAN CI HAS WALKOUT BASEMENT AND PATIO. SEE SALES REP FOR DETAILS.



PLAN CI HAS LARGER DECK. SEE SALES REP FOR DETAILS.



LOWER
409 SF

MAIN
672 SF

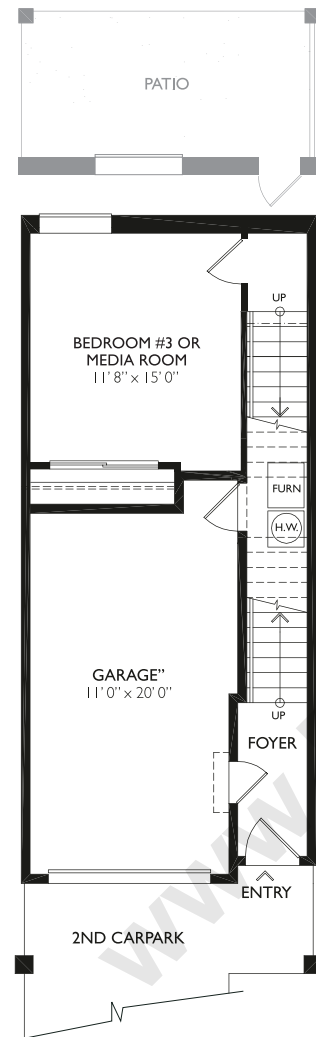
UPPER
683 SF

VANTAGE

Life never looked so good.

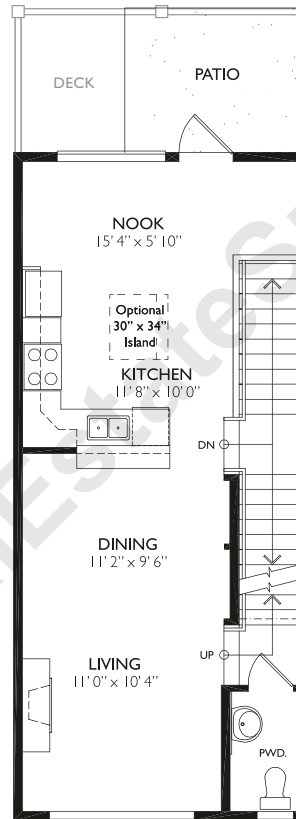
PLAN D&DI TOWNHOME COLLECTION

1550 SF 2 or 3 Bedroom 3 Bathroom



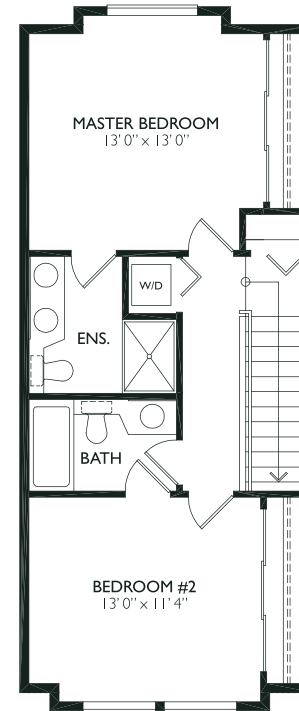
LOWER
345 SF

PLAN DI HAS
WALKOUT BASEMENT
AND PATIO. SEE SALES
REP FOR DETAILS.



MAIN
592 SF

PLAN DI HAS
LARGER DECK
SEE SALES REP
FOR DETAILS.



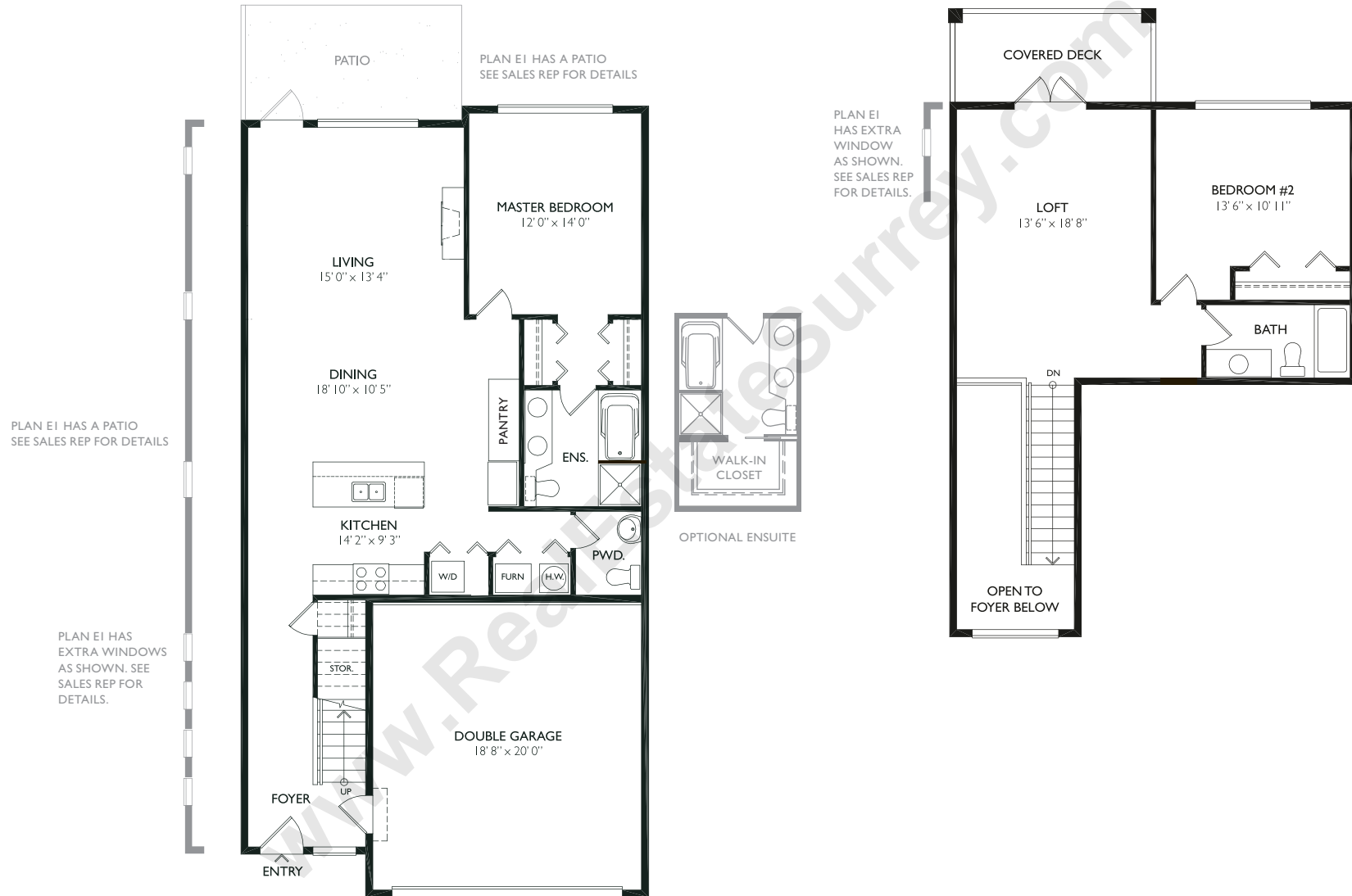
UPPER
613 SF

VANTAGE

Life never looked so good.

PLAN E & EI TOWNHOME COLLECTION

1816 SF 2 Bedroom 3 Bathroom plus Loft



MAIN
1108 SF

UPPER
708 SF