



HIGHLAND PARK

AT MORGAN HEIGHTS

Three Bedroom + Den **A**  
approx. 1,723 sq.ft.



Main floor  
approx. 750 sq.ft.



Upper floor  
approx. 973 sq.ft.



HIGHLAND PARK  
AT MORGAN HEIGHTS

Three Bedroom **Da-n**  
approx. 1,391 - 1,408 sq.ft.





HIGHLAND PARK  
AT MORGAN HEIGHTS

Three Bedroom **D-n**  
approx. 1,320 - 1,324 sq.ft.





HIGHLAND PARK  
AT MORGAN HEIGHTS

Three Bedroom G\*  
approx. 1,313 - 1,316 sq.ft.



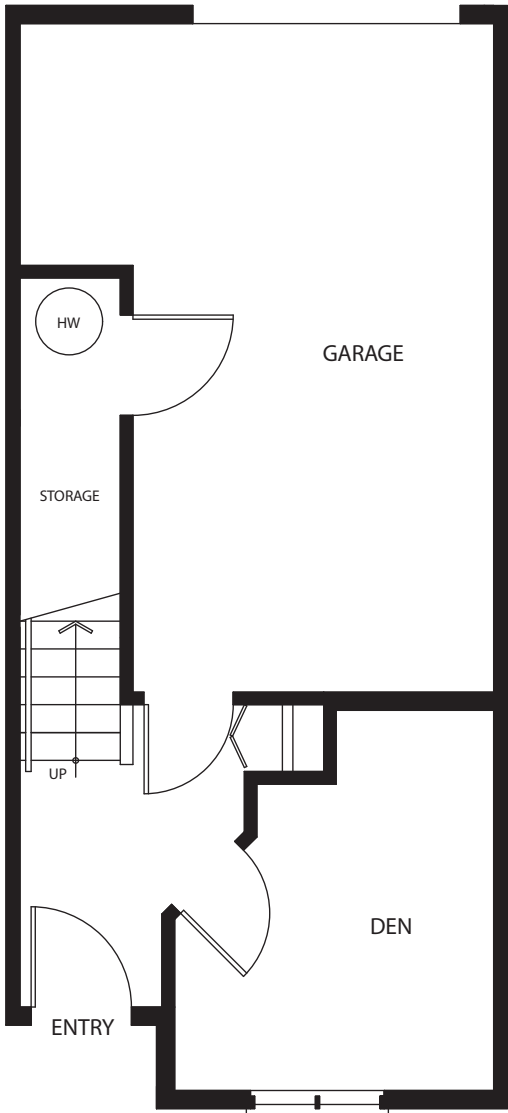
Layouts are not to scale and are for general information purposes only. All square footages, dimensions and layouts are approximate and should not be relied upon. E.& O.E.



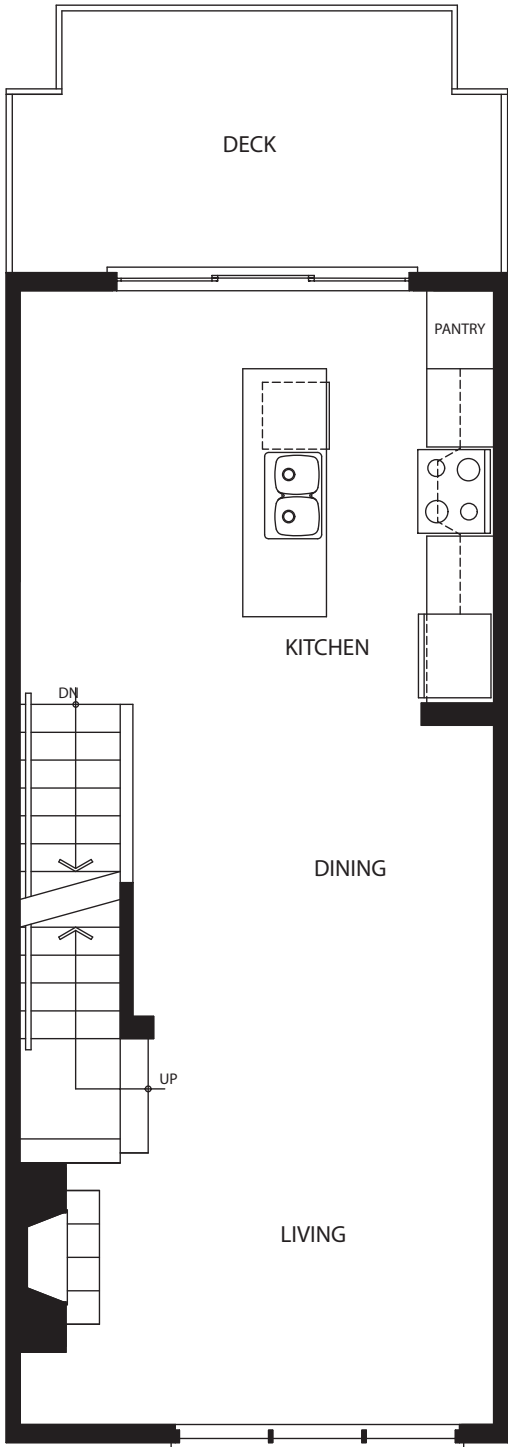
HIGHLAND PARK

AT MORGAN HEIGHTS

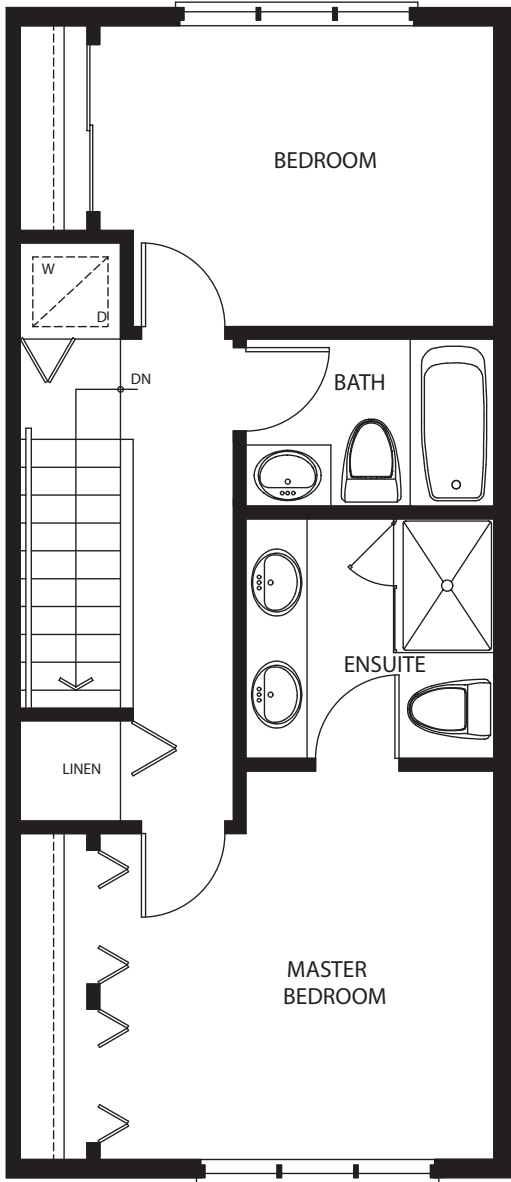
Two Bedroom **T2**  
approx. 1,248 sq.ft



Lower floor  
approx. 214 sq.ft.



Main floor  
approx. 517 sq.ft.

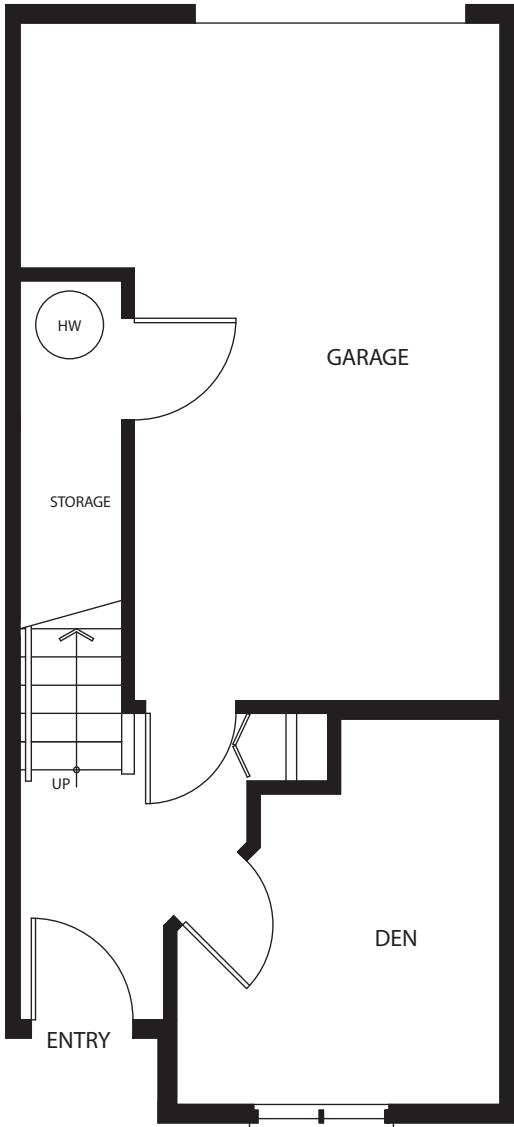


Upper floor  
approx. 517 sq.ft.

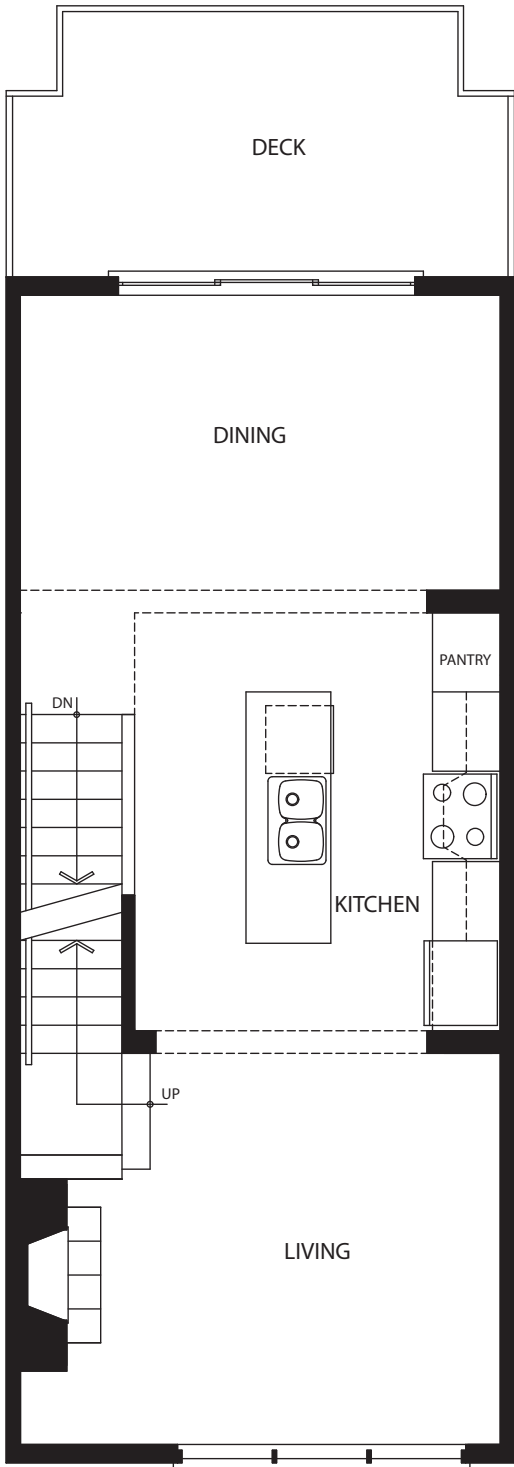


HIGHLAND PARK  
AT MORGAN HEIGHTS

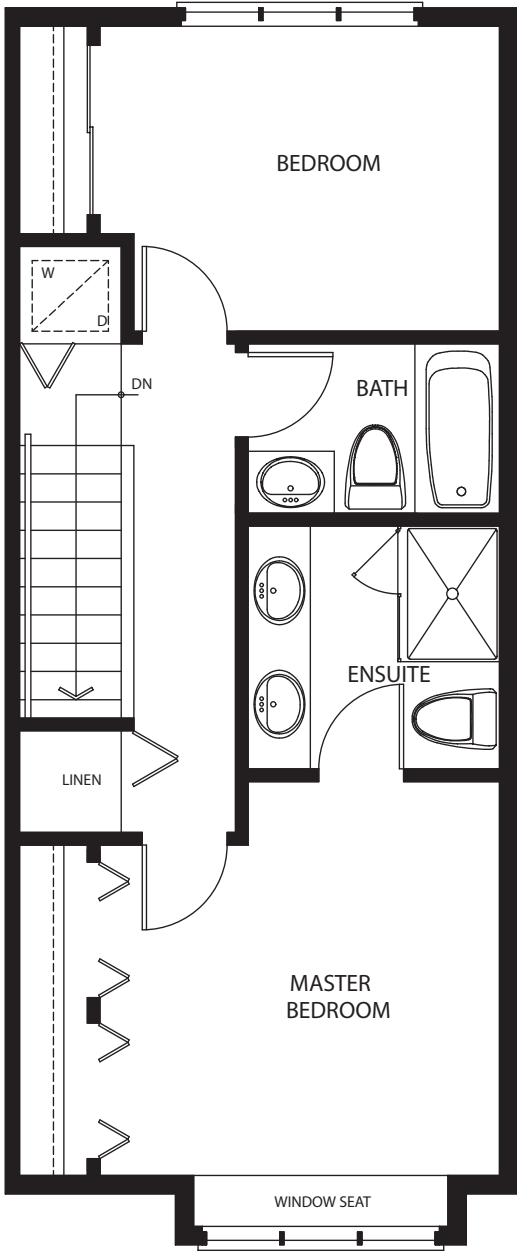
Two Bedroom **T3**  
approx. 1,259 sq.ft.



Lower floor  
approx. 214 sq.ft.



Main floor  
approx. 517 sq.ft.



Upper floor  
approx. 529 sq.ft.