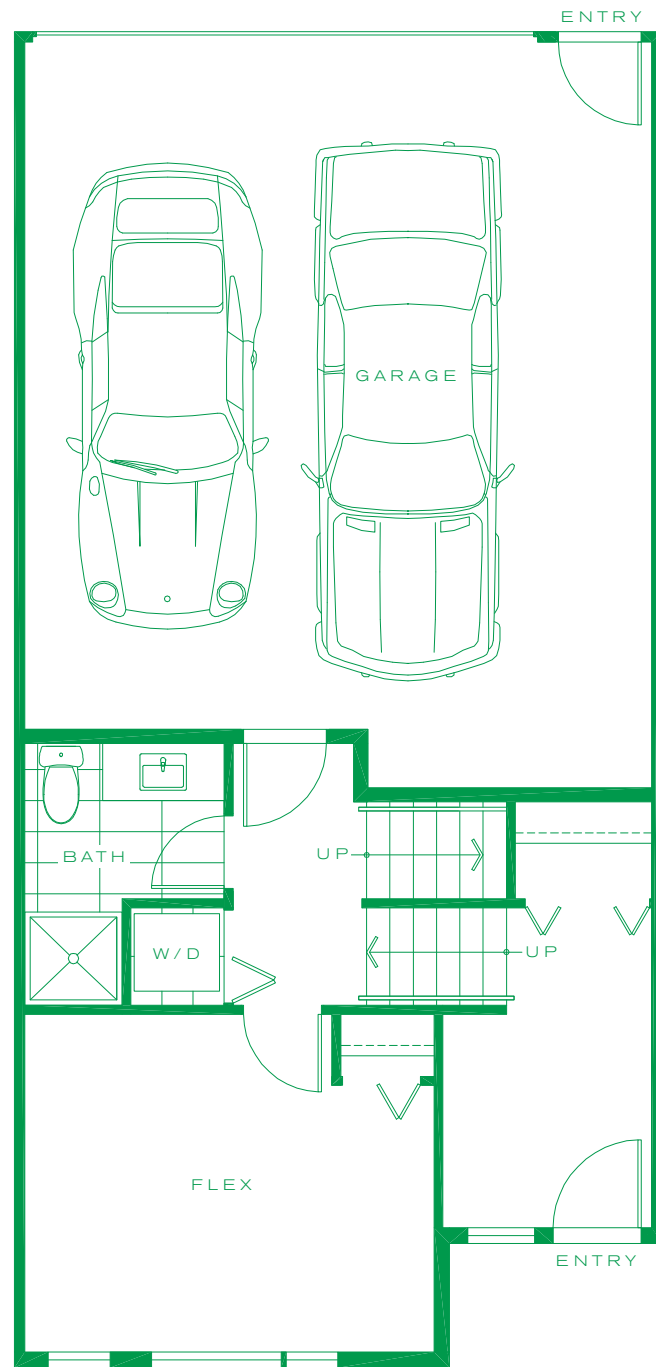


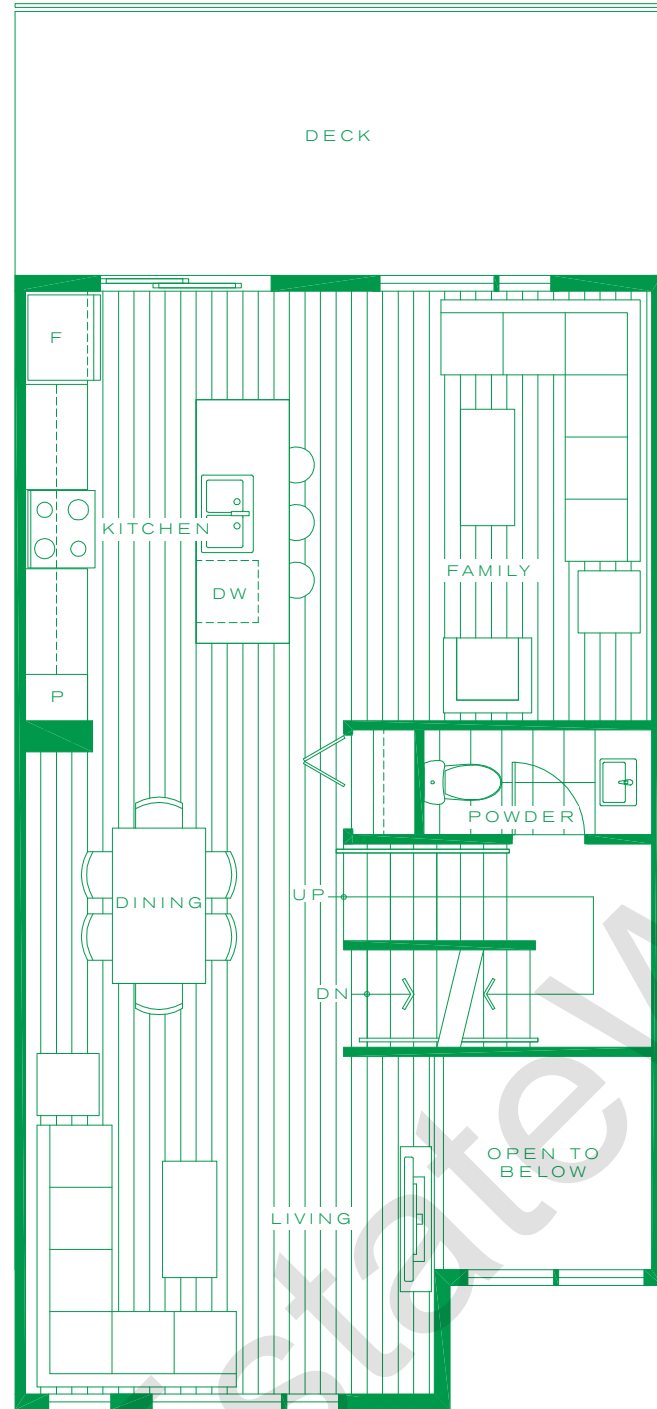
3 BEDROOMS
3 1/2 BATHROOMS
 1,561 SQUARE FEET

UNITS 21, 22, 23, 24, 25, 26,
 27, 28, 29, 30, 32, 33, 34, 35,
 38, 39, 40, 41, 42, 43

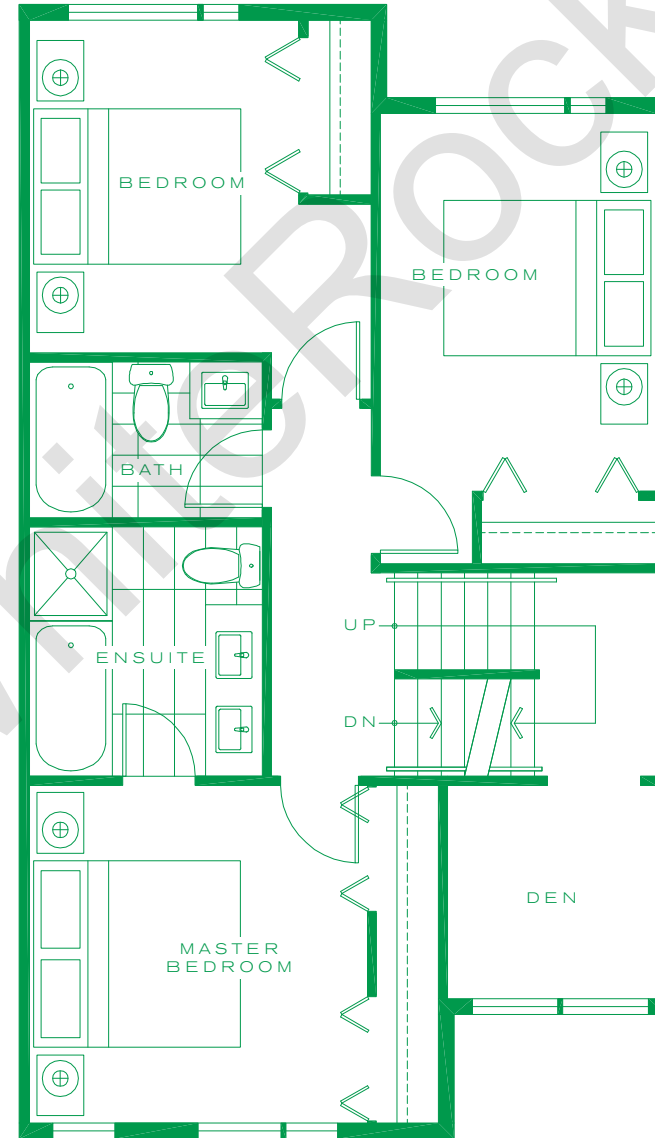




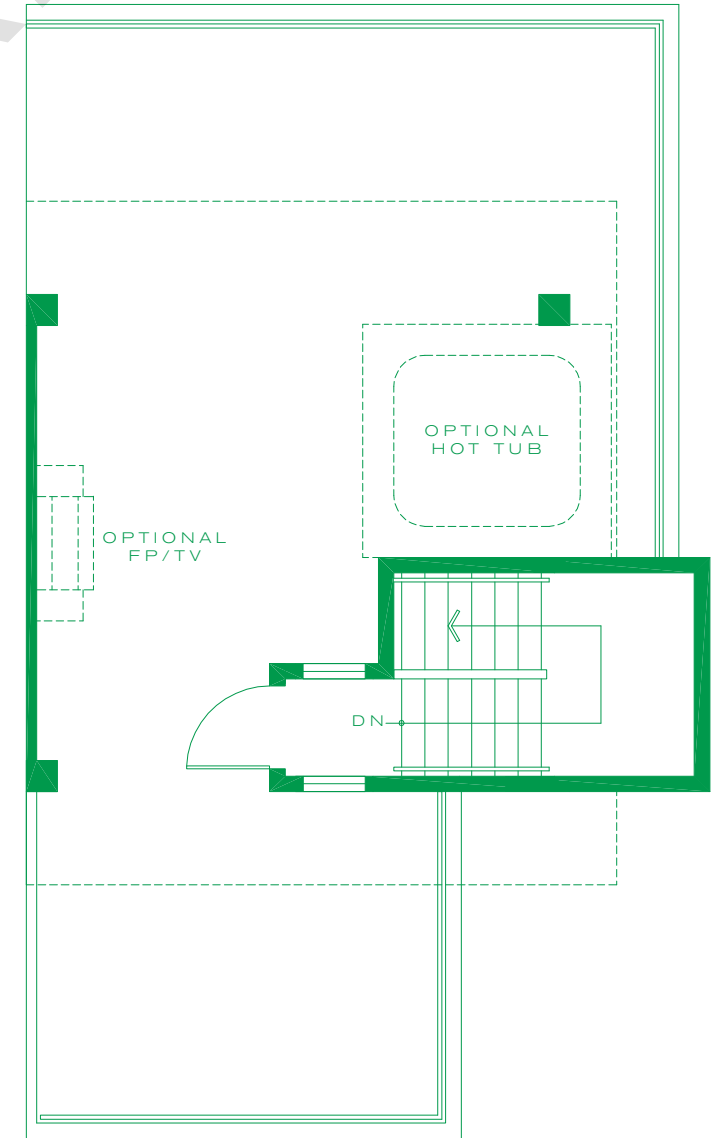
LOWER



MAIN



UPPER



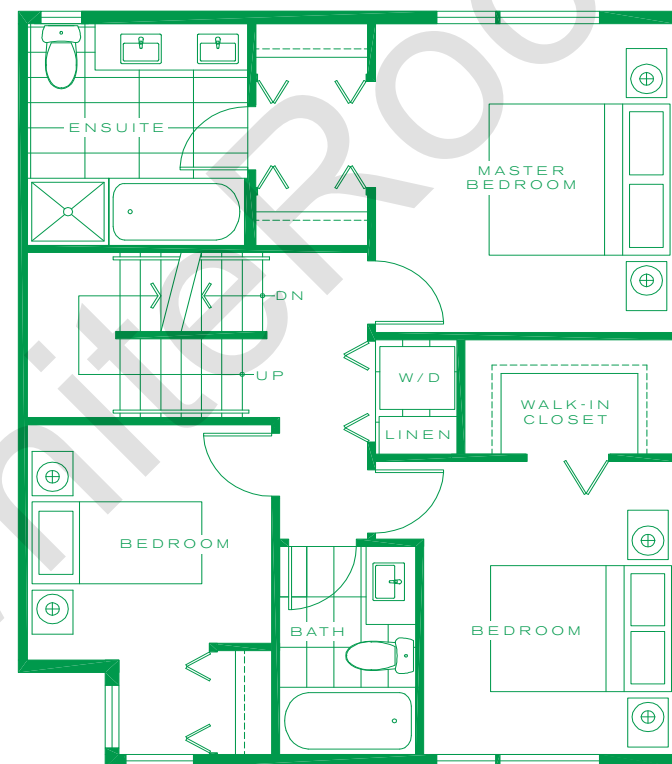
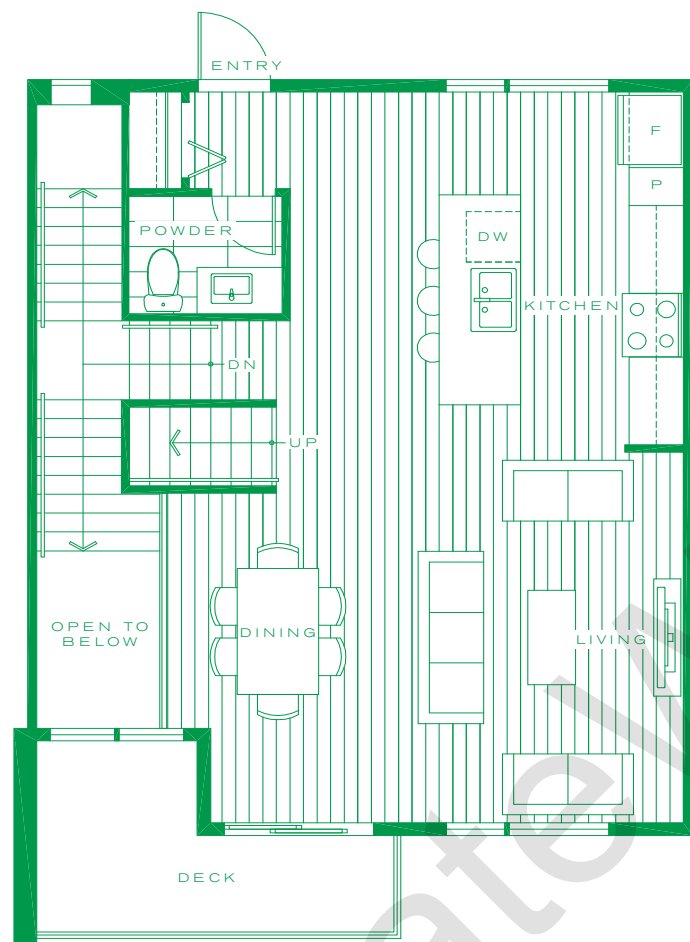
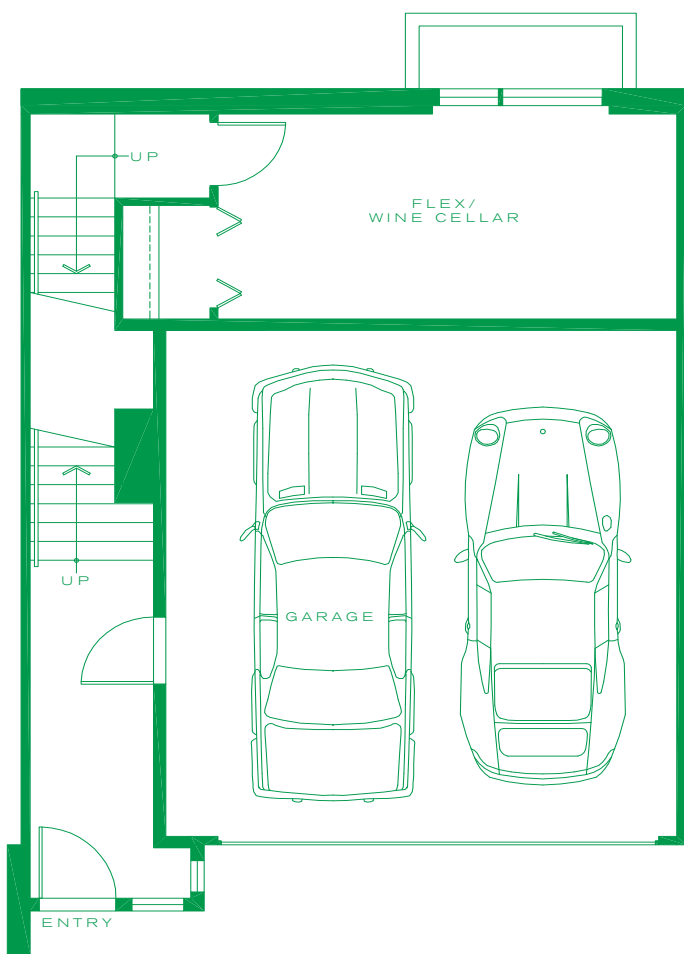
ROOF DECK

3 BEDROOMS + FLEX + DEN
3 1/2 BATHROOMS

1,808 SQUARE FEET

UNITS 46, 47, 48, 49, 50, 51, 52, 53,
 54, 55, 56, 57, 58, 59, 60, 61,





**4 BEDROOMS + FLEX
2 1/2 BATHROOMS**

1,959 SQUARE FEET

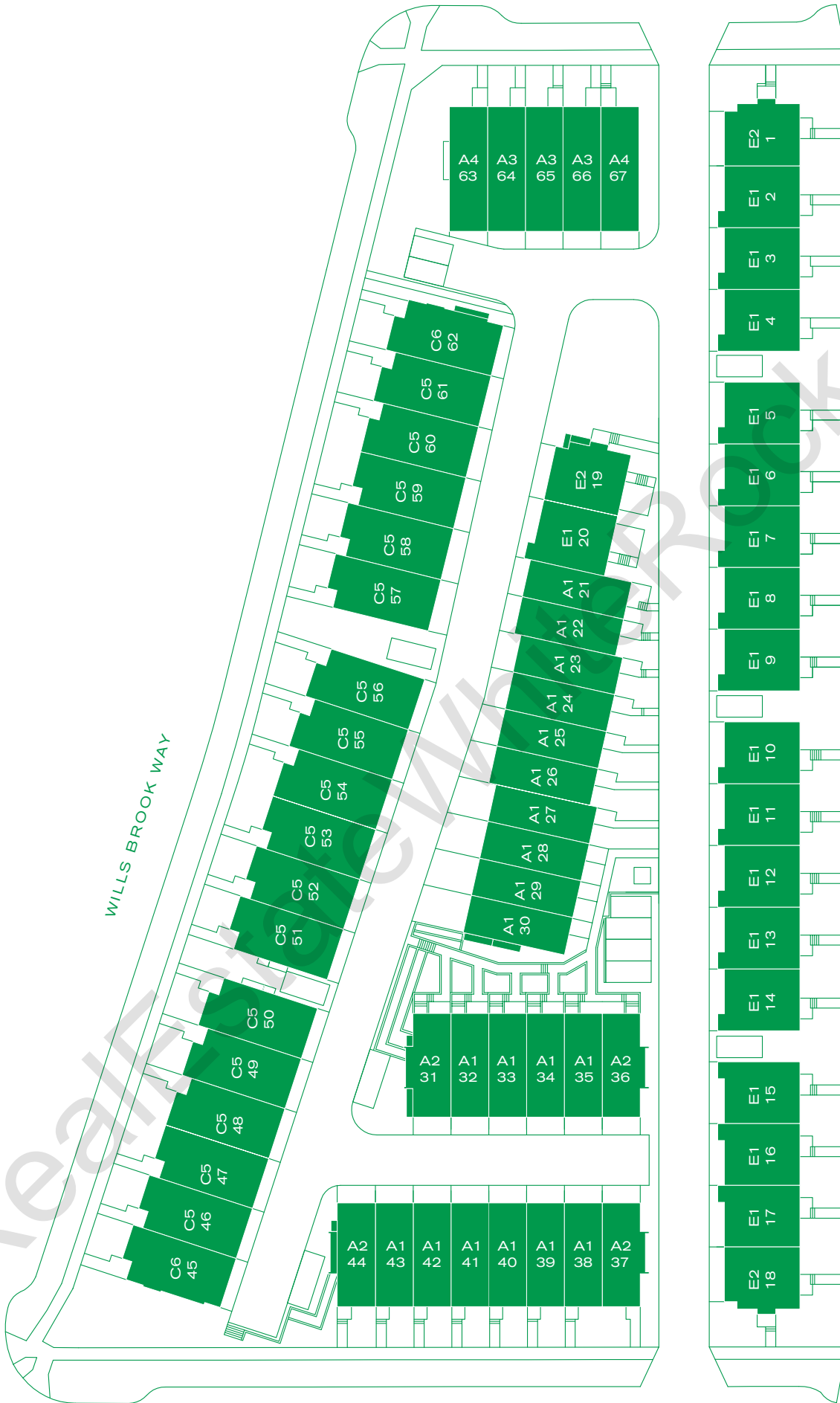
UNITS 2, 3, 4, 5, 6, 7, 8, 9, 10,
11, 12, 13, 14, 15, 16, 17, 20



All areas approximate. It is the buyer's responsibility to review architectural plans before making a final choice. Variable conditions occur throughout the development. Marketing collateral such as floorplans, renderings, material specifications, and site conditions are solely for illustrative purposes only and may vary from as built development.



159 STREET



LANE

SITE PLAN
AVAILABILITY

SOUTH RIDGE CLUB
Greenway



All areas approximate. It is the buyer's responsibility to review architectural plans before making a final choice. Variable conditions occur throughout the development. Marketing collateral such as floorplans, renderings, material specifications, and site conditions are solely for illustrative purposes only and may vary from as built development.