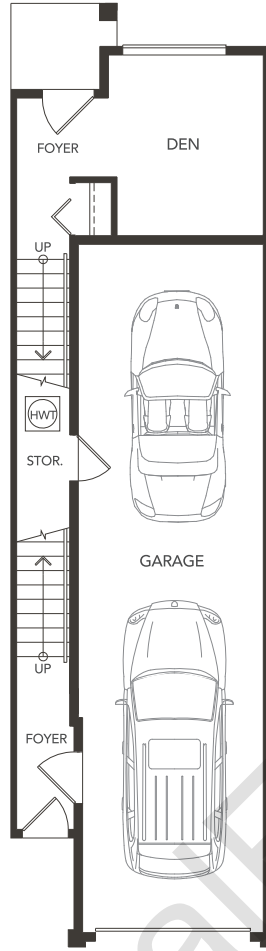


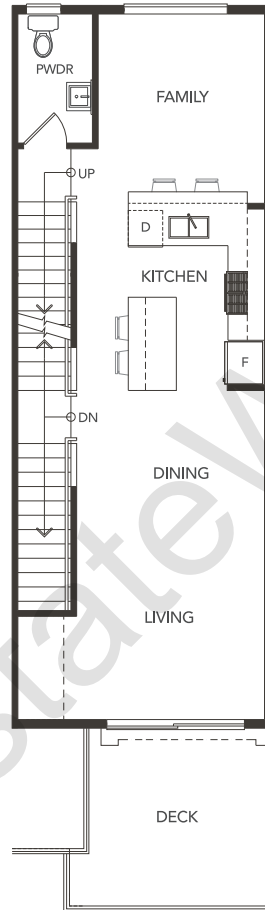
FLOORPLANS

# PLAN A

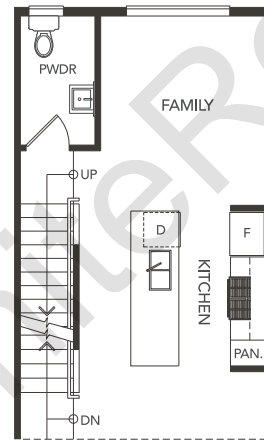
THREE BEDROOM + DEN  
1,492 SQ FT



LOWER

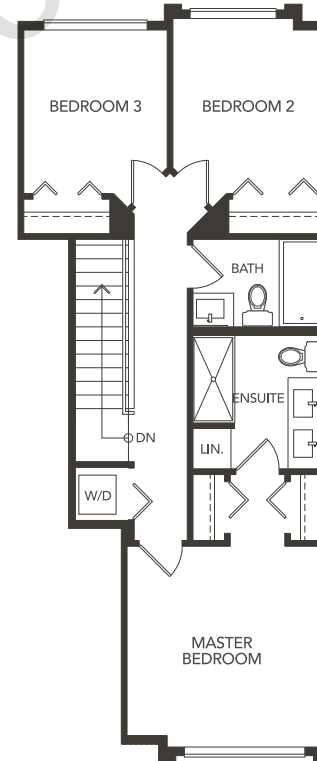


MAIN



OPTIONAL KITCHEN LAYOUT

MAIN



UPPER

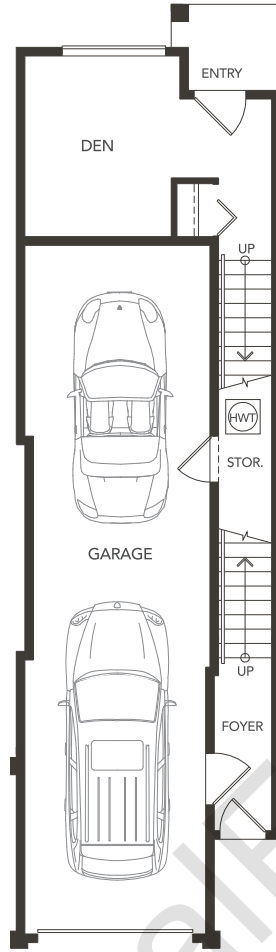
FLOORPLANS

# PLAN A2

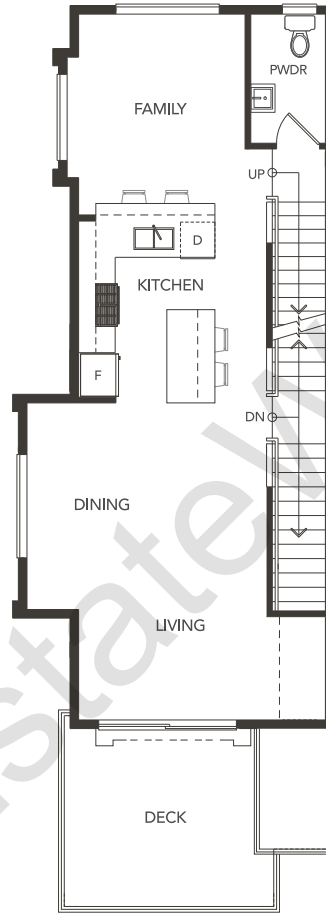
THREE BEDROOM + DEN  
1,554 SQ FT



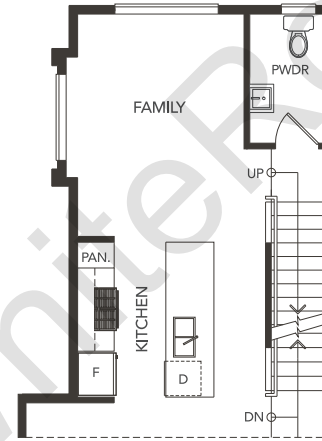
**ZIRKON**  
LUXURY RESIDENCES



LOWER

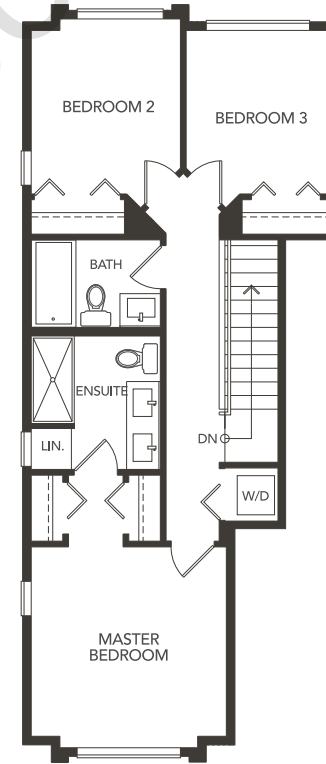


MAIN



OPTIONAL KITCHEN LAYOUT

MAIN



UPPER

In our continuing effort to improve and maintain the high standard of the Zirkon development, the developer reserves the right to modify or change plans, specifications, features and prices without notice. Materials may be substituted with equivalent or better at the developer's sole discretion. All dimensions and sizes are approximate and are based on architectural measurements. As reverse and/or mirrored plans occur throughout the development please see architectural plans for exact plan unit layout if important to you. Illustrations, renderings and marketing materials provided are an artist's conception and are intended as a general reference only and are subject to change without prior notice. Please ask one of the helpful sales staff to reference the architectural set of construction drawings for most accurate dimensions and other details. Please refer to disclosure statement for specific offering details. E. & O. E.



HAYER  
PROPERTIES

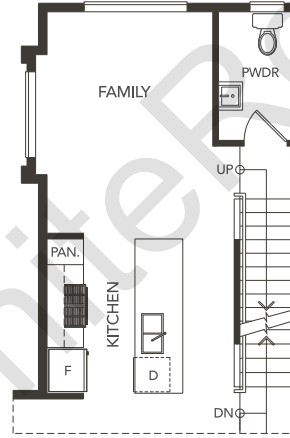
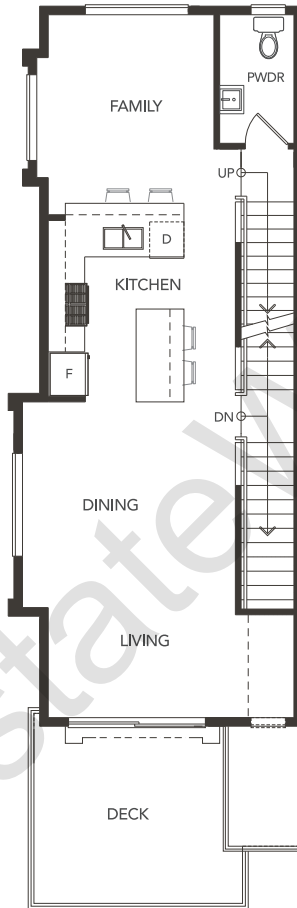
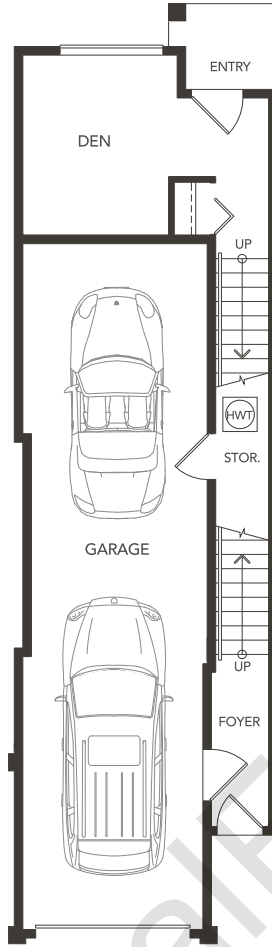
FLOORPLANS

# PLAN A3

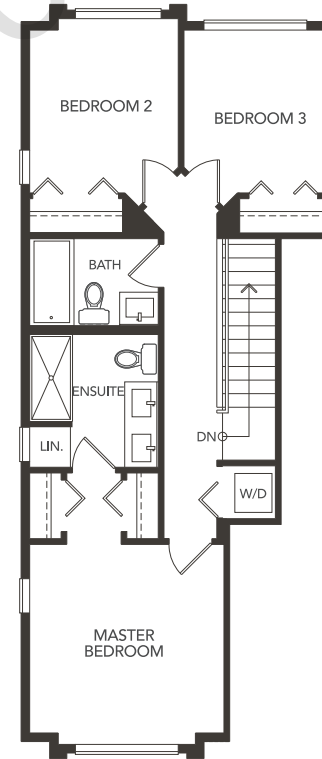
THREE BEDROOM + DEN  
1,534 SQ FT



**ZIRKON**  
LUXURY RESIDENCES



MAIN



In our continuing effort to improve and maintain the high standard of the Zirkon development, the developer reserves the right to modify or change plans, specifications, features and prices without notice. Materials may be substituted with equivalent or better at the developer's sole discretion. All dimensions and sizes are approximate and are based on architectural measurements. As reverse and/or mirrored plans occur throughout the development please see architectural plans for exact plan unit layout if important to you. Illustrations, renderings and marketing materials provided are an artist's conception and are intended as a general reference only and are subject to change without prior notice. Please ask one of the helpful sales staff to reference the architectural set of construction drawings for most accurate dimensions and other details. Please refer to disclosure statement for specific offering details. E. & O. E.



HAYER  
PROPERTIES

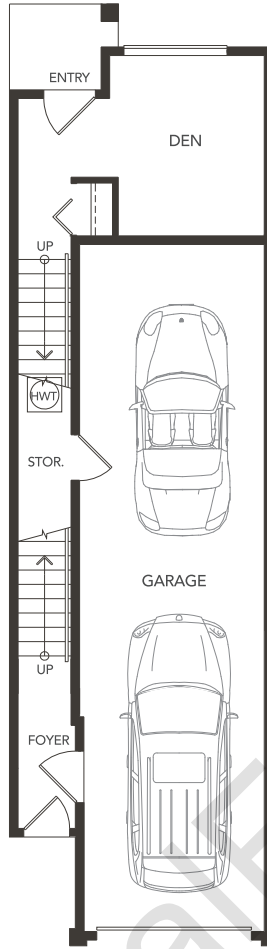
FLOORPLANS

# PLAN B

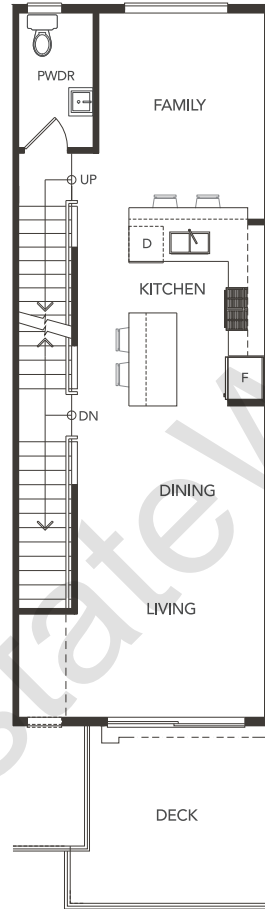
THREE BEDROOM + DEN  
1,492 SQ FT



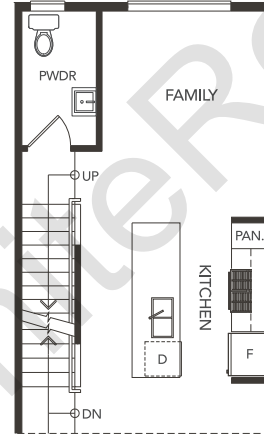
**ZIRKON**  
LUXURY RESIDENCES



LOWER

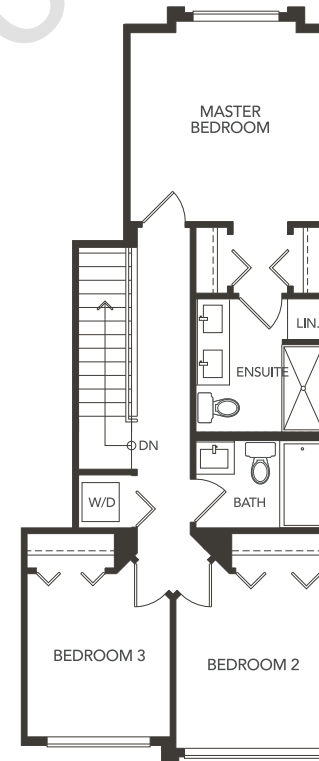


MAIN



OPTIONAL KITCHEN LAYOUT

MAIN



Smaller window on unit 3 & 8

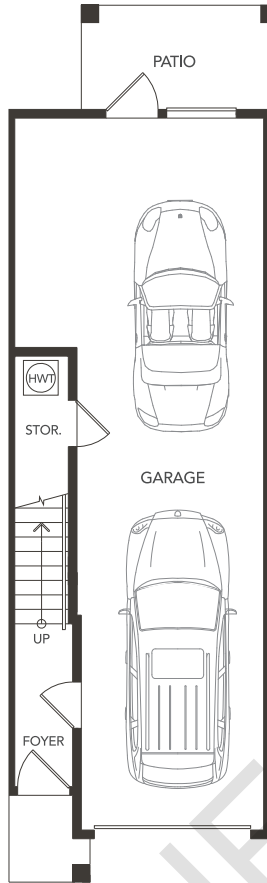
UPPER

In our continuing effort to improve and maintain the high standard of the Zirkon development, the developer reserves the right to modify or change plans, specifications, features and prices without notice. Materials may be substituted with equivalent or better at the developer's sole discretion. All dimensions and sizes are approximate and are based on architectural measurements. As reverse and/or mirrored plans occur throughout the development please see architectural plans for exact plan unit layout if important to you. Illustrations, renderings and marketing materials provided are an artist's conception and are intended as a general reference only and are subject to change without prior notice. Please ask one of the helpful sales staff to reference the architectural set of construction drawings for most accurate dimensions and other details. Please refer to disclosure statement for specific offering details. E. & O. E.

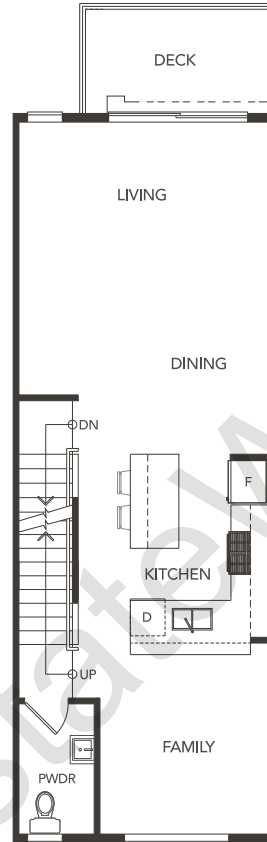


**HAYER**  
PROPERTIES

FLOORPLANS  
**PLAN D**  
 THREE BEDROOM  
 1,321 SQ FT

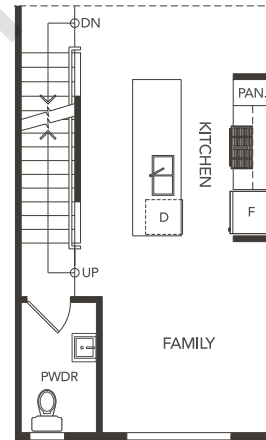


LOWER

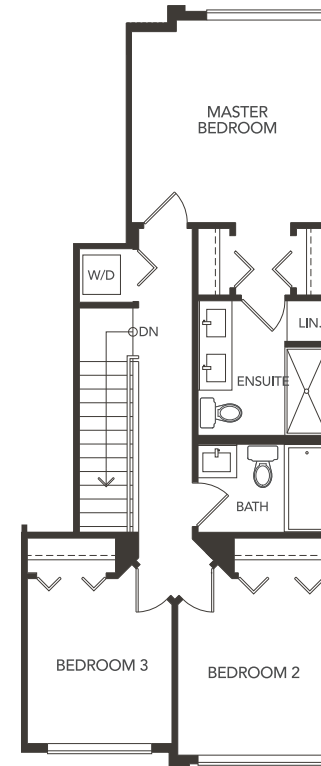


MAIN

OPTIONAL KITCHEN LAYOUT

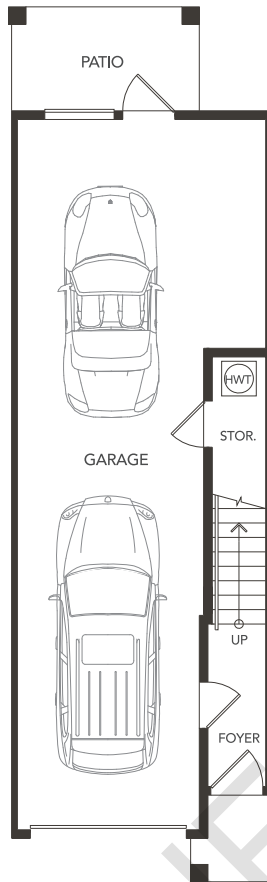


MAIN

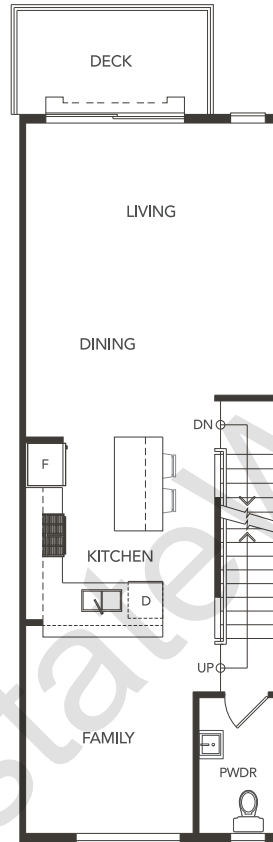


UPPER

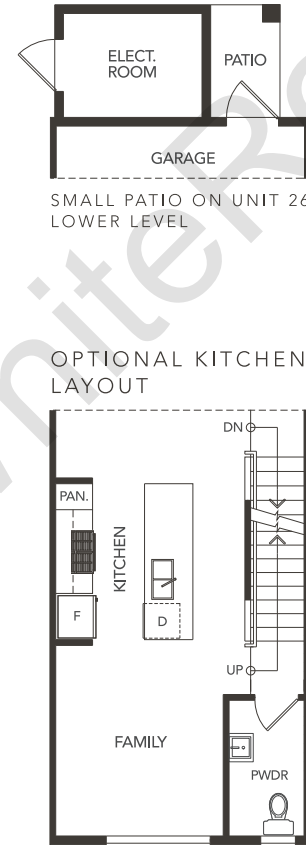
FLOORPLANS  
**PLAN E**  
 THREE BEDROOM  
 1,321 SQ FT



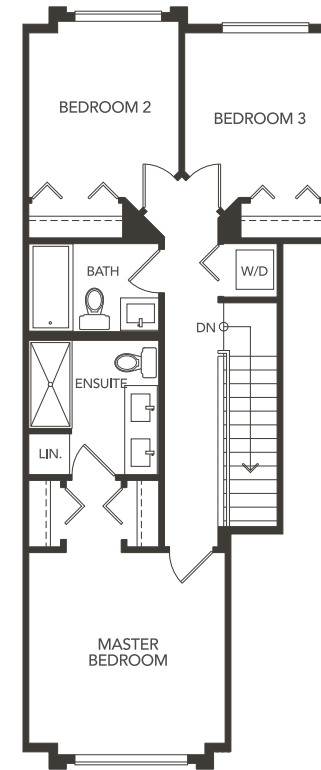
LOWER



MAIN



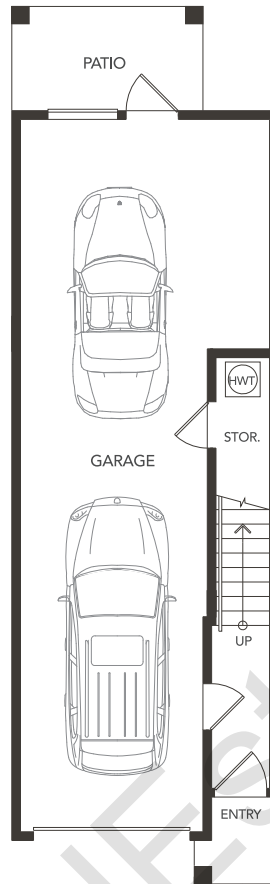
MAIN



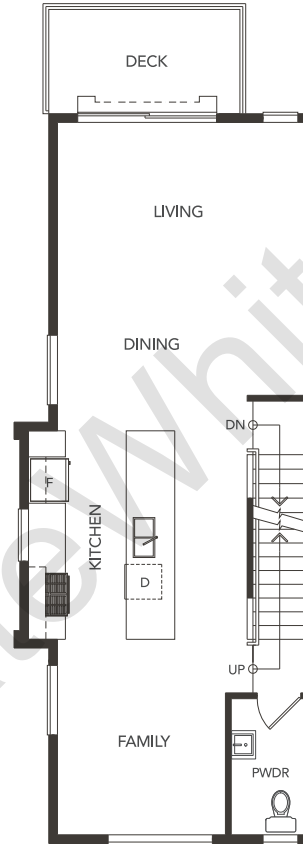
UPPER

FLOORPLANS  
**PLAN E2**

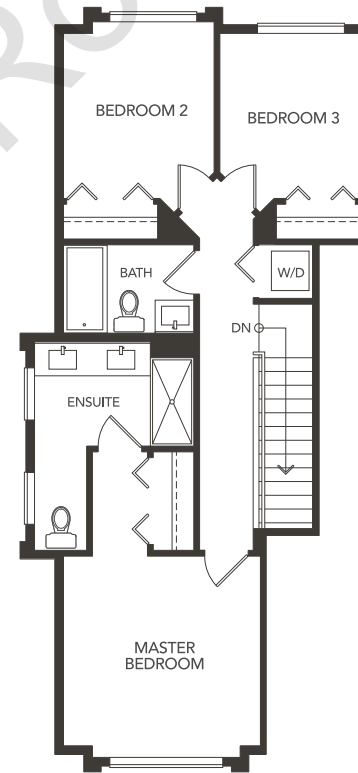
THREE BEDROOM  
1,379 SQ FT



LOWER



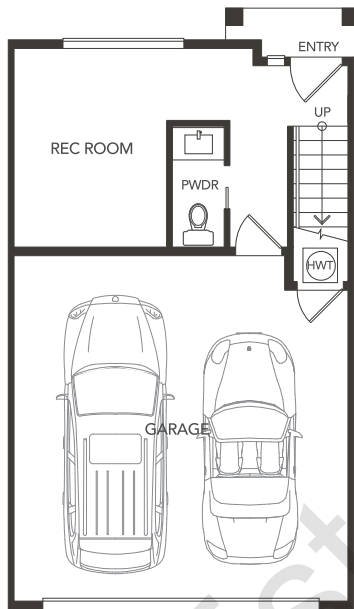
MAIN



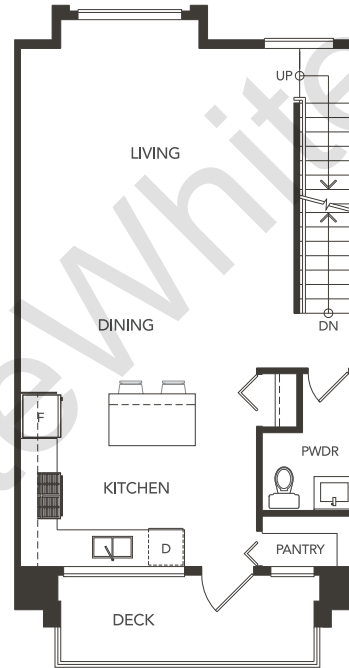
UPPER

# FLOORPLANS PLAN F

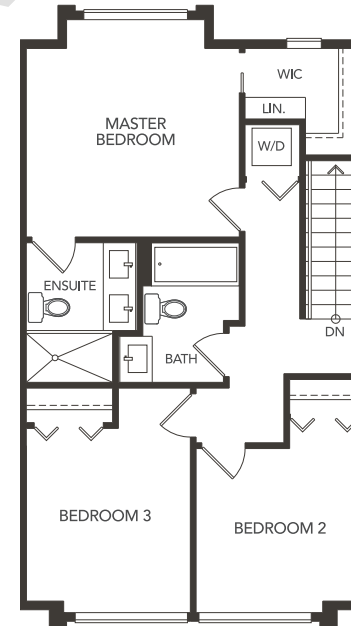
THREE BEDROOM + REC ROOM + DOUBLE GARAGE  
1,582 SQ FT



LOWER



MAIN



UPPER



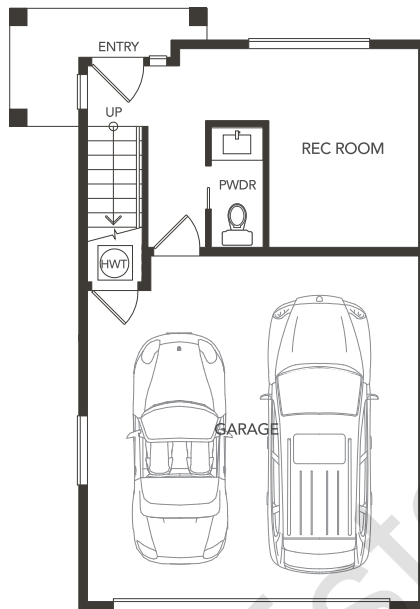
FLOORPLANS

# PLAN G

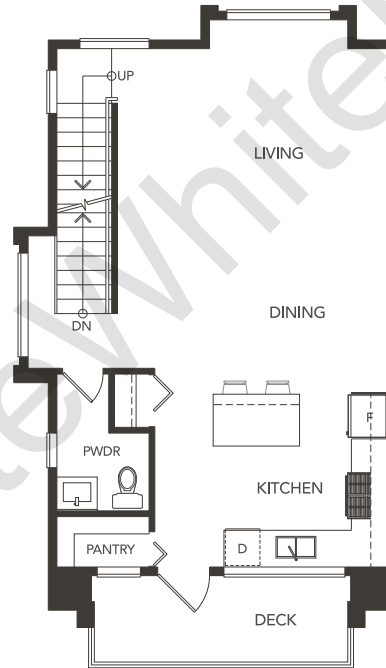
THREE BEDROOM + REC ROOM + DOUBLE GARAGE  
1,615 SQ FT



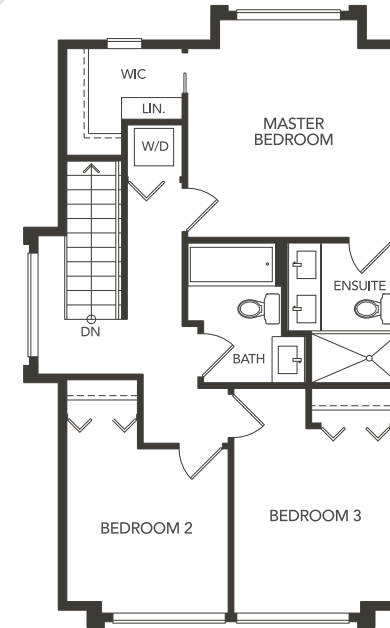
**ZIRKON**  
LUXURY RESIDENCES



LOWER



MAIN



UPPER

In our continuing effort to improve and maintain the high standard of the Zirkon development, the developer reserves the right to modify or change plans, specifications, features and prices without notice. Materials may be substituted with equivalent or better at the developer's sole discretion. All dimensions and sizes are approximate and are based on architectural measurements. As reverse and/or mirrored plans occur throughout the development please see architectural plans for exact plan unit layout if important to you. Illustrations, renderings and marketing materials provided are an artist's conception and are intended as a general reference only and are subject to change without prior notice. Please ask one of the helpful sales staff to reference the architectural set of construction drawings for most accurate dimensions and other details. Please refer to disclosure statement for specific offering details. E. & O. E.



**HAYER**  
PROPERTIES

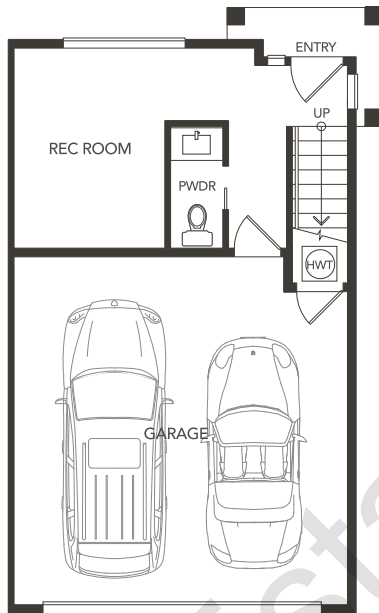
FLOORPLANS

# PLAN G1

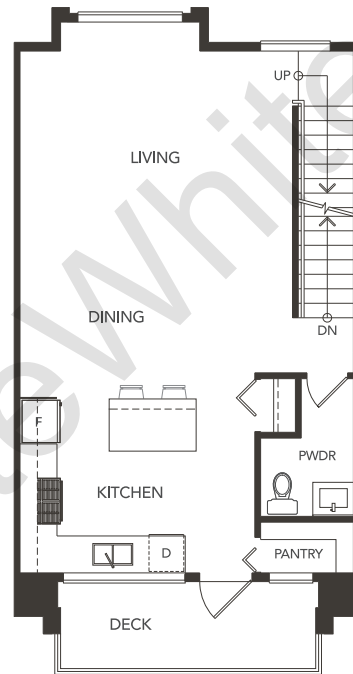
THREE BEDROOM + REC ROOM + DOUBLE GARAGE  
1,585 SQ FT



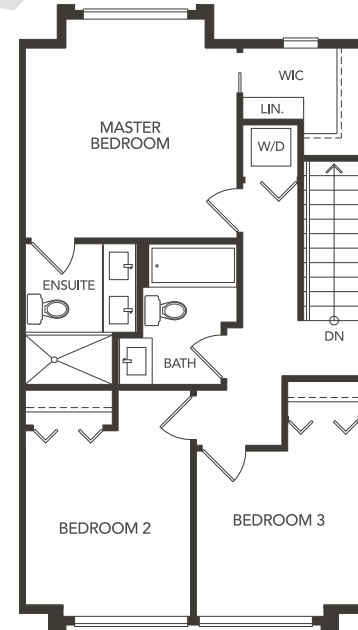
**ZIRKON**  
LUXURY RESIDENCES



LOWER



MAIN



UPPER

In our continuing effort to improve and maintain the high standard of the Zirkon development, the developer reserves the right to modify or change plans, specifications, features and prices without notice. Materials may be substituted with equivalent or better at the developer's sole discretion. All dimensions and sizes are approximate and are based on architectural measurements. As reverse and/or mirrored plans occur throughout the development please see architectural plans for exact plan unit layout if important to you. Illustrations, renderings and marketing materials provided are an artist's conception and are intended as a general reference only and are subject to change without prior notice. Please ask one of the helpful sales staff to reference the architectural set of construction drawings for most accurate dimensions and other details. Please refer to disclosure statement for specific offering details. E. & O. E.



**HAYER**  
PROPERTIES

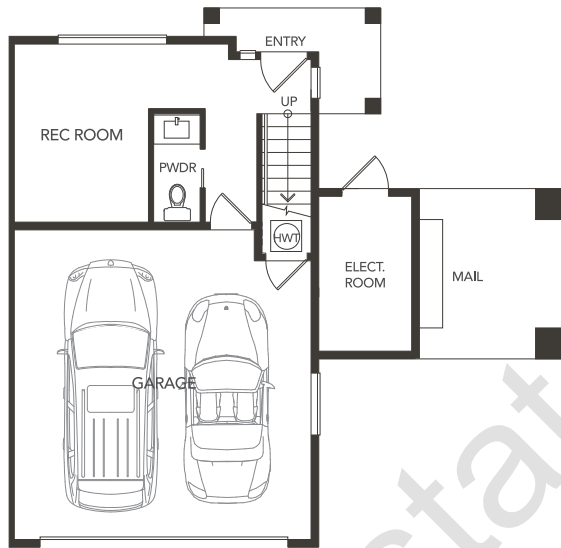
FLOORPLANS

# PLAN G2

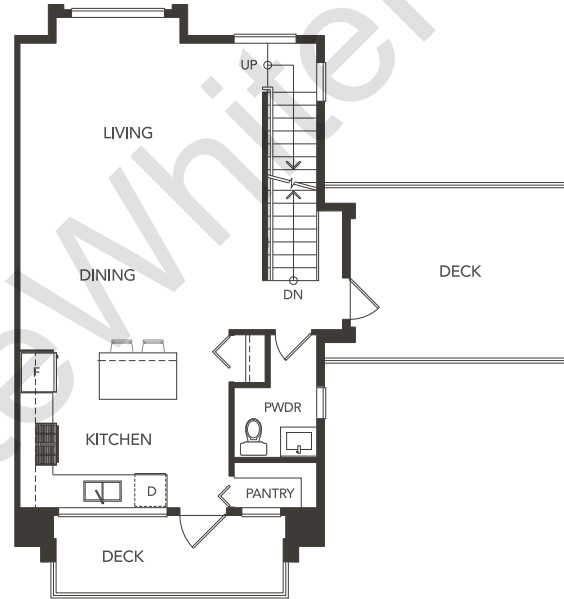
THREE BEDROOM + REC ROOM + DOUBLE GARAGE  
1,615 SQ FT



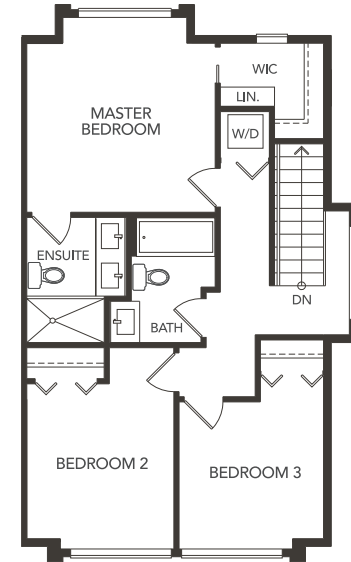
**ZIRKON**  
LUXURY RESIDENCES



LOWER



MAIN



UPPER

In our continuing effort to improve and maintain the high standard of the Zirkon development, the developer reserves the right to modify or change plans, specifications, features and prices without notice. Materials may be substituted with equivalent or better at the developer's sole discretion. All dimensions and sizes are approximate and are based on architectural measurements. As reverse and/or mirrored plans occur throughout the development please see architectural plans for exact plan unit layout if important to you. Illustrations, renderings and marketing materials provided are an artist's conception and are intended as a general reference only and are subject to change without prior notice. Please ask one of the helpful sales staff to reference the architectural set of construction drawings for most accurate dimensions and other details. Please refer to disclosure statement for specific offering details. E. & O. E.



**HAYER**  
PROPERTIES

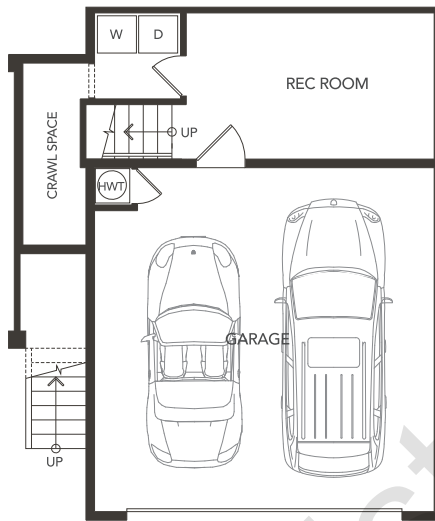
FLOORPLANS

# PLAN H

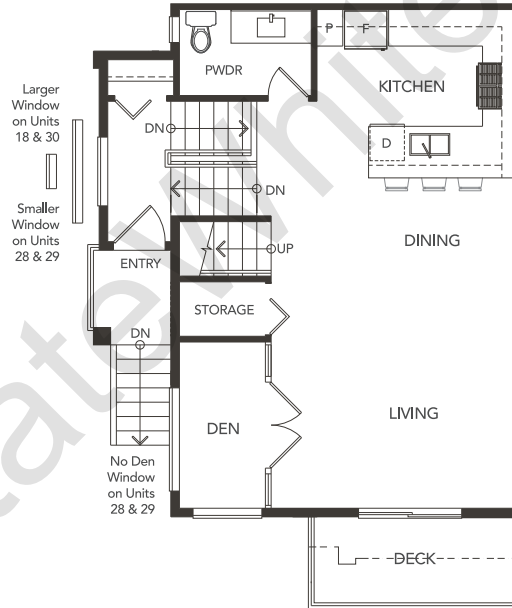
THREE BEDROOM + REC ROOM + DOUBLE GARAGE  
1,583 SQ FT



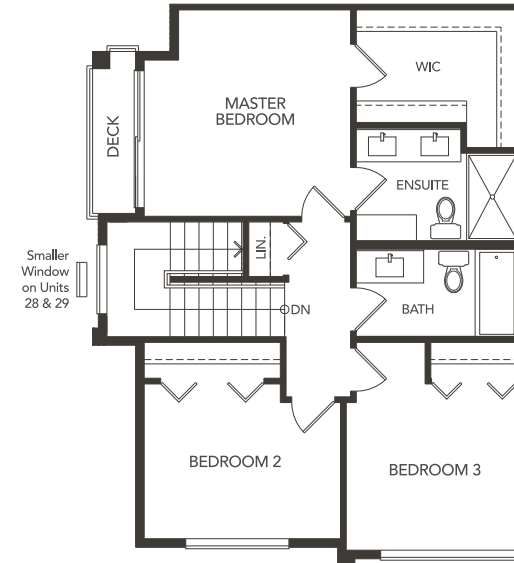
**ZIRKON**  
LUXURY RESIDENCES



LOWER



MAIN



UPPER