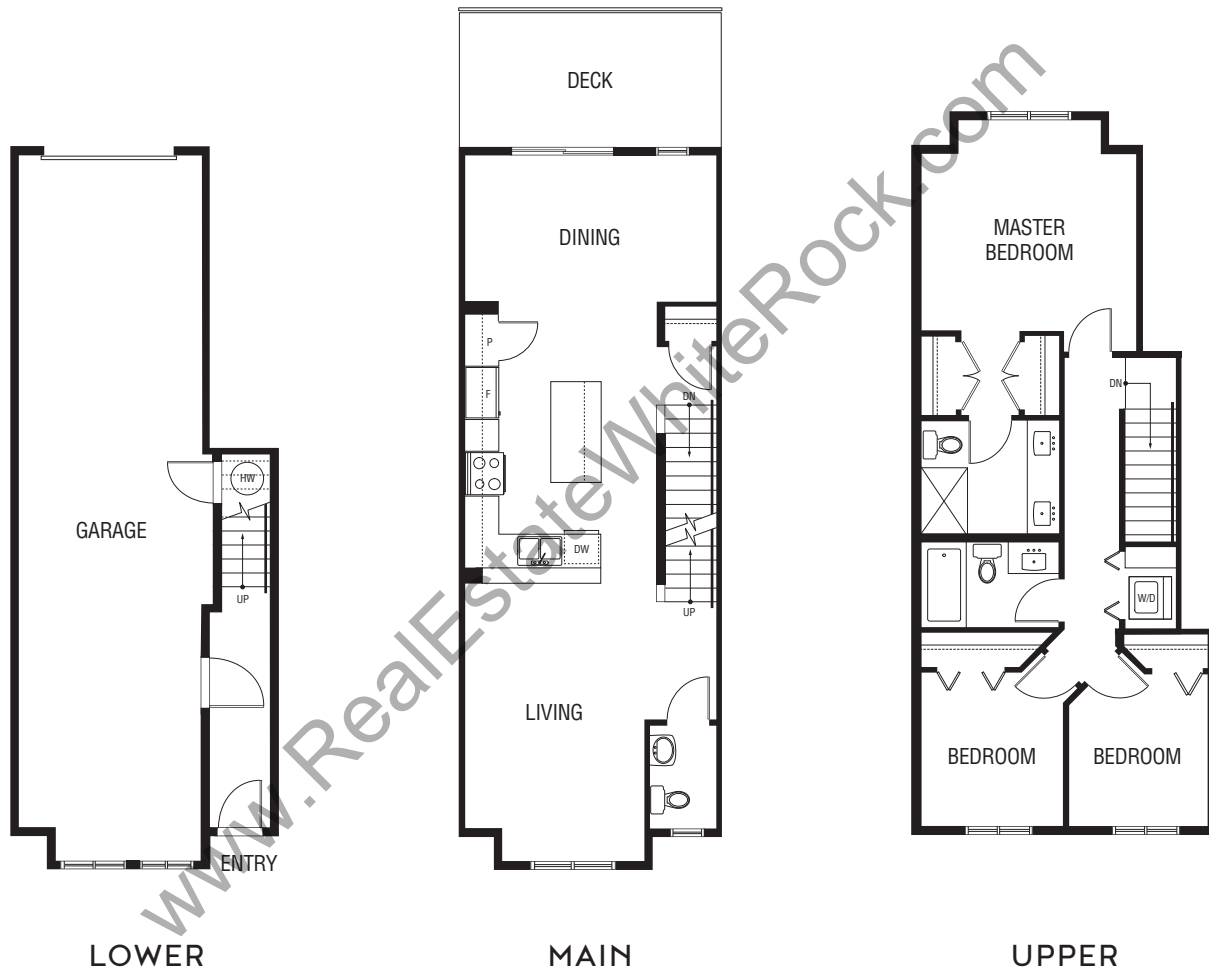


PLAN A

3 BED, 2.5 BATH
1,445 SF

Bright modern open layout with centre island kitchen perfect for entertaining. Large barbeque deck properly positioned off the dining area. Convenient main floor powder room. Spacious master suite with his & her closets and convenient dual ensuite sinks making getting ready together a breeze.



In our continuing effort to improve and maintain the high standard of the Hazelwood development, the developer reserves the right to modify or change plans, specifications, features and prices without notice. Materials may be substituted with equivalent or better at the developer's sole discretion. All dimensions and sizes are approximate and are based on architectural measurements. As reverse, flipped, and/or mirrored plans occur throughout the development please see architectural plans for unit layout if material to your decision to purchase. Illustrations, renderings, vignettes, and marketing materials provided are an artist's conception and are intended as a general reference only, not to be relied upon as they are subject to change without prior notice. Please ask one of the helpful sales staff to reference the most recent set of architectural set of construction drawings for most up to date dimensions, layouts, and other details. Please refer to disclosure statement for specific offering details. E. & O. E



HAZELWOOD
SOUTH GRANDVIEW

PLAN B

3 BED, 2.5 BATH
1,450 SF

Bright modern open layout with centre island kitchen perfect for entertaining. Large barbeque deck properly positioned off the dining area. Convenient main floor powder room. Spacious master suite with his & her closets and convenient dual ensuite sinks making getting ready together a breeze.



In our continuing effort to improve and maintain the high standard of the Hazelwood development, the developer reserves the right to modify or change plans, specifications, features and prices without notice. Materials may be substituted with equivalent or better at the developer's sole discretion. All dimensions and sizes are approximate and are based on architectural measurements. As reverse, flipped, and/or mirrored plans occur throughout the development please see architectural plans for unit layout if material to your decision to purchase. Illustrations, renderings, vignettes, and marketing materials provided are an artist's conception and are intended as a general reference only, not to be relied upon as they are subject to change without prior notice. Please ask one of the helpful sales staff to reference the most recent set of architectural set of construction drawings for most up to date dimensions, layouts, and other details. Please refer to disclosure statement for specific offering details. E. & O. E

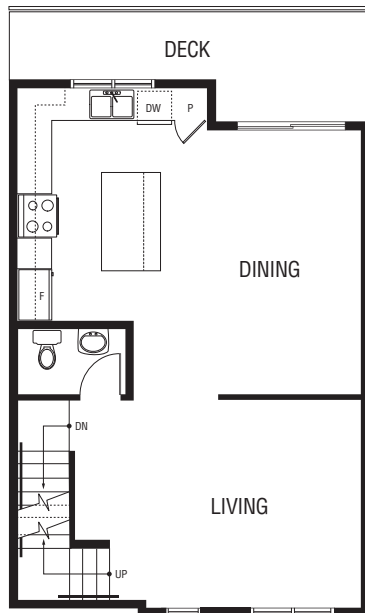


HAZELWOOD
SOUTH GRANDVIEW

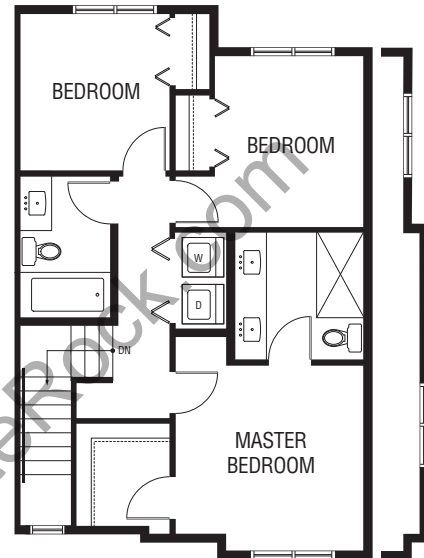
PLAN C

3 BED + DEN, 2.5 BATH
1,487 - 1,575 SF

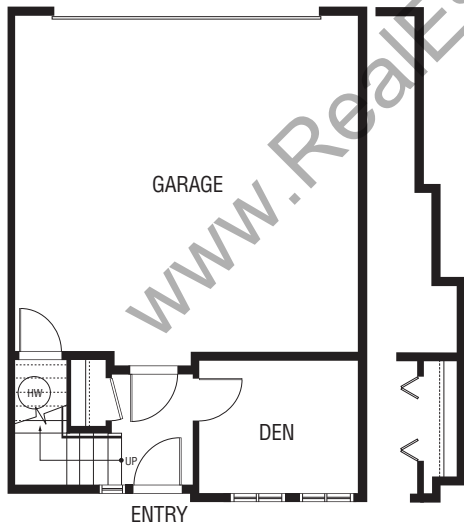
Traditional plan boasting gorgeous island kitchen, there is even a window over the sink, open to formal dining area. Barbeque deck properly located off the kitchen and dining areas. Bright and airy formal living room with convenient main floor powder room make entertaining a breeze. Spacious master suite with full walk-in closet. Dual ensuite sinks make getting ready together easier than ever.



MAIN



UPPER



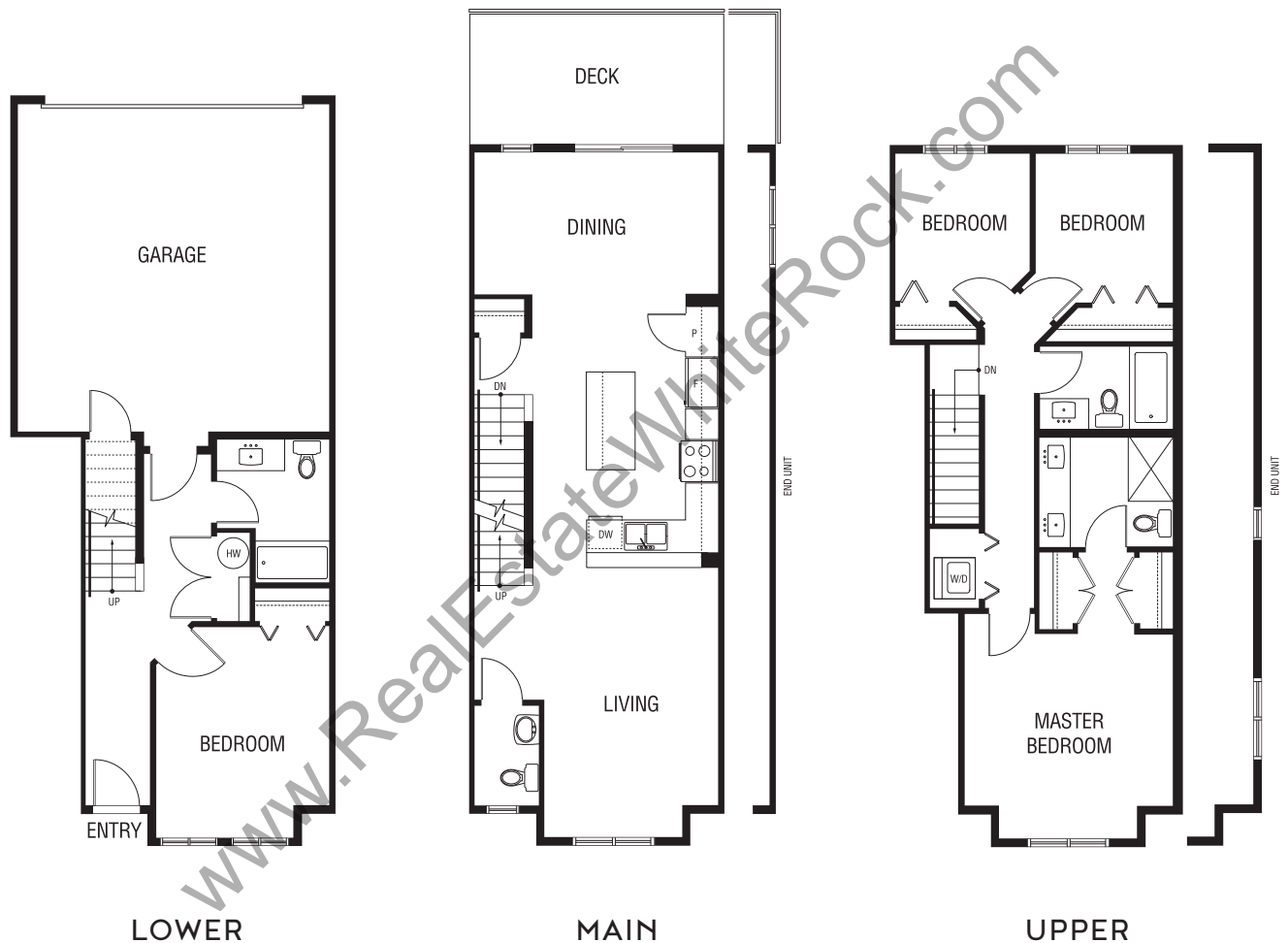
LOWER

In our continuing effort to improve and maintain the high standard of the Hazelwood development, the developer reserves the right to modify or change plans, specifications, features and prices without notice. Materials may be substituted with equivalent or better at the developer's sole discretion. All dimensions and sizes are approximate and are based on architectural measurements. As reverse, flipped, and/or mirrored plans occur throughout the development please see architectural plans for unit layout if material to your decision to purchase. Illustrations, renderings, vignettes, and marketing materials provided are an artist's conception and are intended as a general reference only, not to be relied upon as they are subject to change without prior notice. Please ask one of the helpful sales staff to reference the most recent set of architectural set of construction drawings for most up to date dimensions, layouts, and other details. Please refer to disclosure statement for specific offering details. E. & O. E.

PLAN D

4 BED, 3.5 BATH
1,703 - 1,721 SF

Bright modern open layout with centre island kitchen perfect for entertaining. Large barbeque deck properly positioned off the dining area. Convenient main floor powder room. Fourth bedroom on lower level with convenient full bathroom, perfect for teenagers or grandparents. Spacious master suite with his & her closets and convenient dual ensuite sinks.



In our continuing effort to improve and maintain the high standard of the Hazelwood development, the developer reserves the right to modify or change plans, specifications, features and prices without notice. Materials may be substituted with equivalent or better at the developer's sole discretion. All dimensions and sizes are approximate and are based on architectural measurements. As reverse, flipped, and/or mirrored plans occur throughout the development please see architectural plans for unit layout if material to your decision to purchase. Illustrations, renderings, vignettes, and marketing materials provided are an artist's conception and are intended as a general reference only, not to be relied upon as they are subject to change without prior notice. Please ask one of the helpful sales staff to reference the most recent set of architectural set of construction drawings for most up to date dimensions, layouts, and other details. Please refer to disclosure statement for specific offering details. E. & O. E

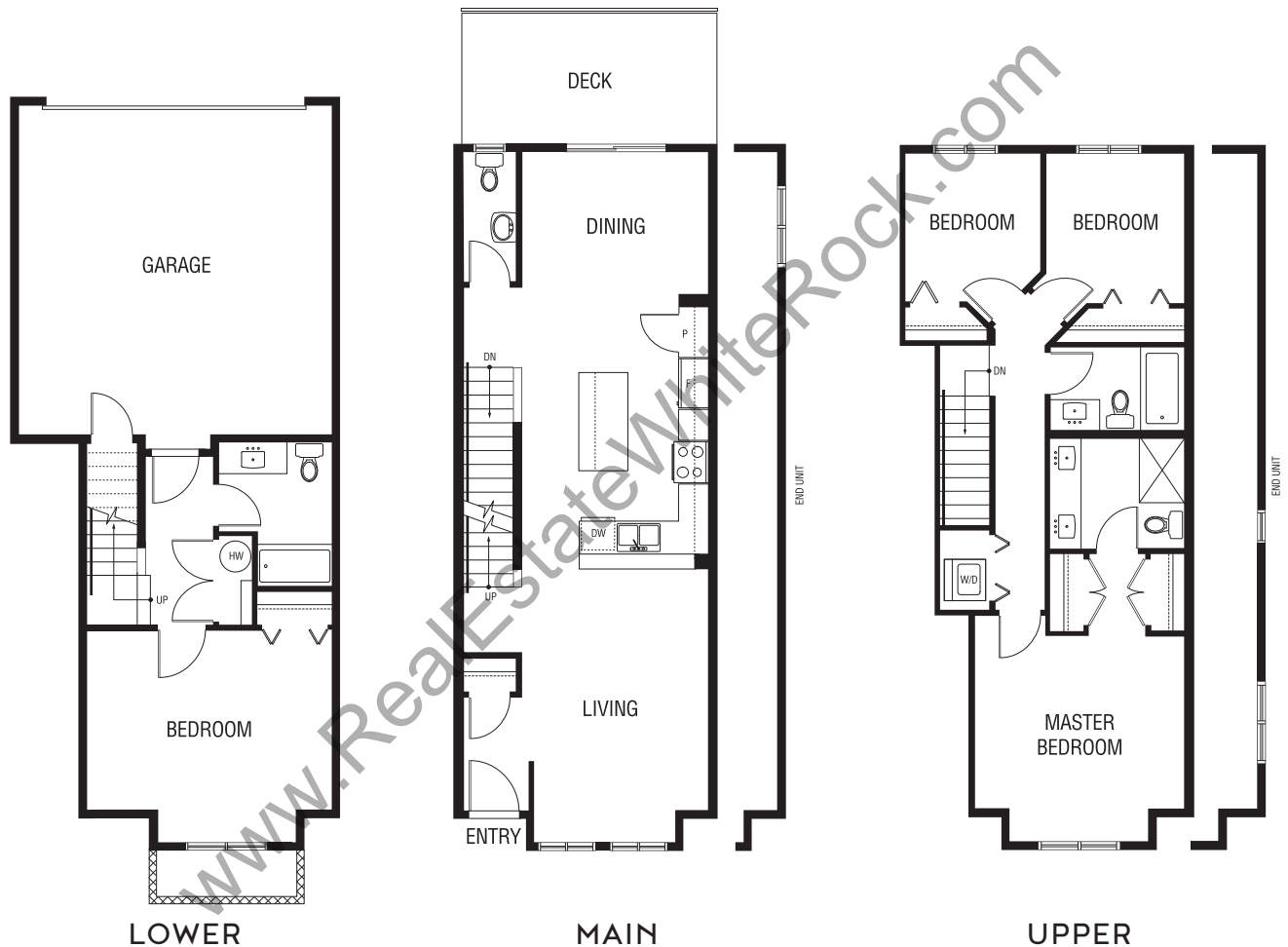


HAZELWOOD
SOUTH GRANDVIEW

PLAN E

4 BED, 3.5 BATH
1,711 - 1,729 SF

Bright modern open layout with centre island kitchen perfect for entertaining. Large barbeque deck properly positioned off the dining area. Convenient main floor powder room. Fourth bedroom on lower level with convenient full bathroom, perfect for teenagers or grandparents. Spacious master suite with his & her closets and convenient dual ensuite sinks.



In our continuing effort to improve and maintain the high standard of the Hazelwood development, the developer reserves the right to modify or change plans, specifications, features and prices without notice. Materials may be substituted with equivalent or better at the developer's sole discretion. All dimensions and sizes are approximate and are based on architectural measurements. As reverse, flipped, and/or mirrored plans occur throughout the development please see architectural plans for unit layout if material to your decision to purchase. Illustrations, renderings, vignettes, and marketing materials provided are an artist's conception and are intended as a general reference only, not to be relied upon as they are subject to change without prior notice. Please ask one of the helpful sales staff to reference the most recent set of architectural set of construction drawings for most up to date dimensions, layouts, and other details. Please refer to disclosure statement for specific offering details. E. & O. E

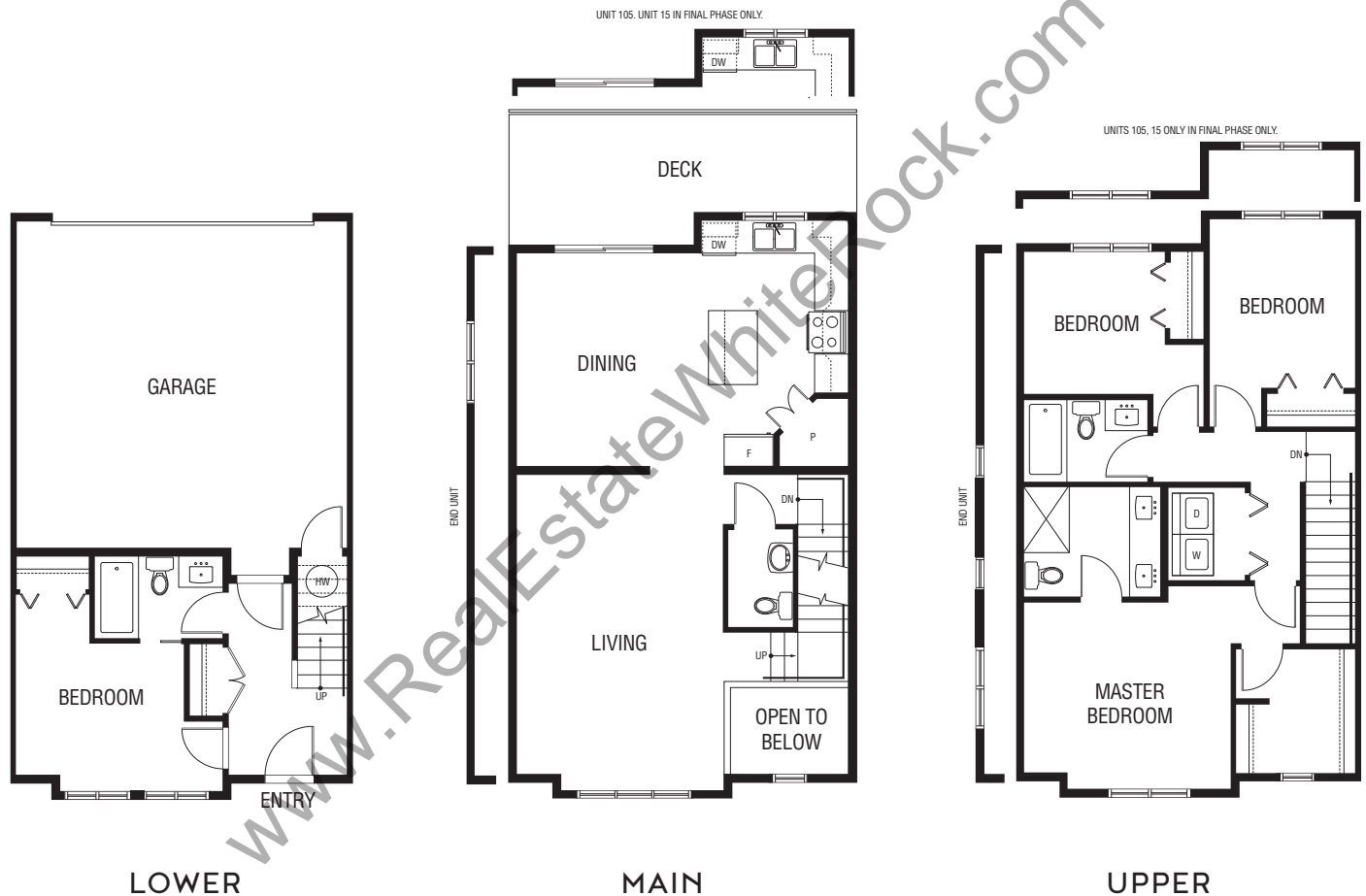


HAZELWOOD
SOUTH GRANDVIEW

PLAN F

4 BED, 3.5 BATH
1,711 - 1,731 SF

Traditional plan boasting gorgeous island kitchen, there is even a window over the sink, open to formal dining area. Barbeque deck properly located off the kitchen and dining areas. Bright and airy formal living room with convenient main floor powder room make entertaining a breeze. Fourth bedroom on lower level with convenient full bathroom, perfect for teenagers or grandparents. Spacious master suite with luxury walk-in closet. Dual ensuite sinks make getting ready together easier than ever.



In our continuing effort to improve and maintain the high standard of the Hazelwood development, the developer reserves the right to modify or change plans, specifications, features and prices without notice. Materials may be substituted with equivalent or better at the developer's sole discretion. All dimensions and sizes are approximate and are based on architectural measurements. As reverse, flipped, and/or mirrored plans occur throughout the development please see architectural plans for unit layout if material to your decision to purchase. Illustrations, renderings, vignettes, and marketing materials provided are an artist's conception and are intended as a general reference only, not to be relied upon as they are subject to change without prior notice. Please ask one of the helpful sales staff to reference the most recent set of architectural set of construction drawings for most up to date dimensions, layouts, and other details. Please refer to disclosure statement for specific offering details. E. & O. E

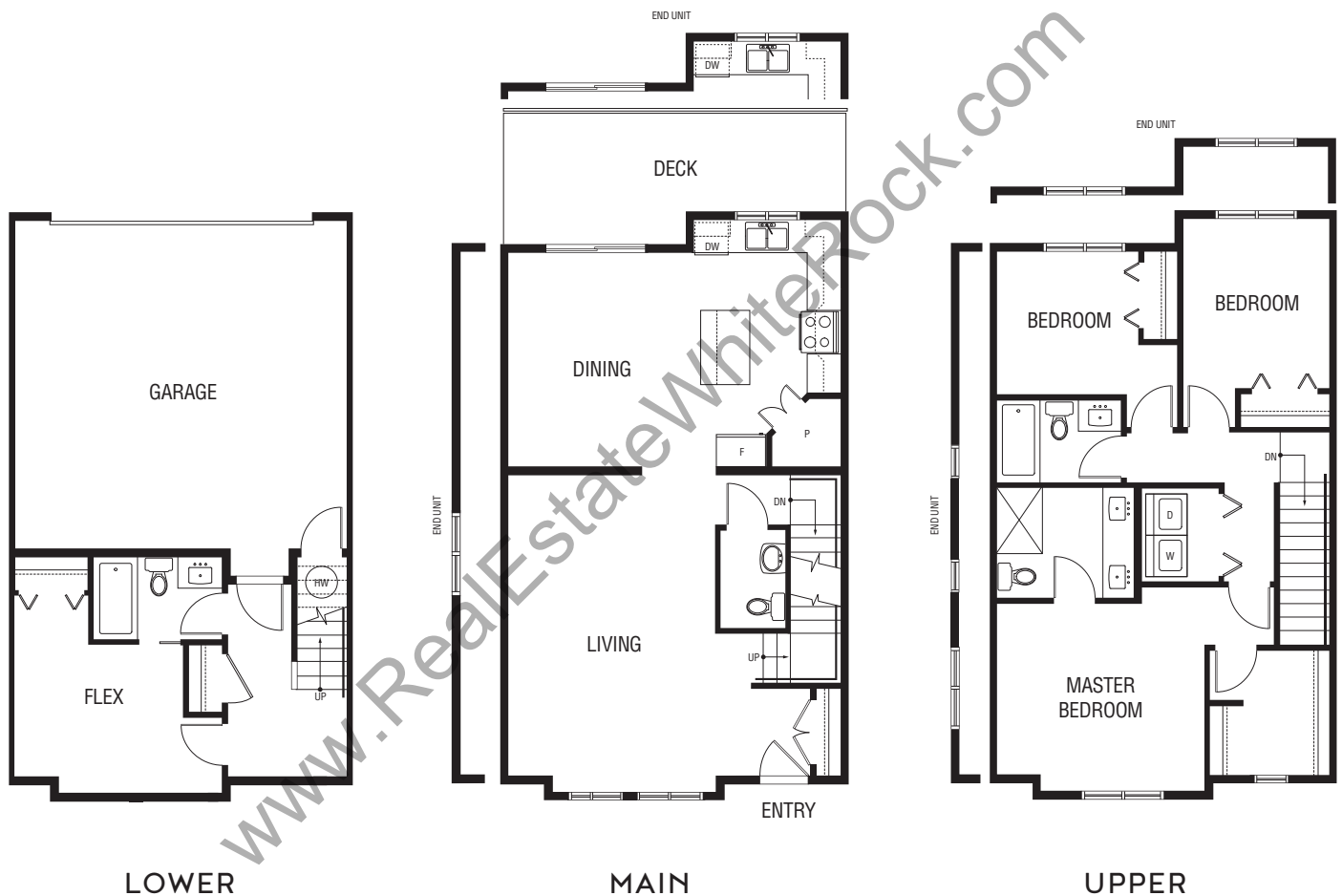


HAZELWOOD
SOUTH GRANDVIEW

PLAN G

3 BED + FLEX, 3.5 BATH
1,750 - 1,770 SF

Traditional plan boasting gorgeous island kitchen, there is even a window over the sink, open to formal dining area. Barbeque deck properly located off the kitchen and dining areas. Bright and airy formal living room with convenient main floor powder room make entertaining a breeze. Flex room on lower level with convenient full bathroom, perfect for teenagers or grandparents. Spacious master suite with luxury walk-in closet. Dual ensuite sinks make getting ready together easier than ever.



In our continuing effort to improve and maintain the high standard of the Hazelwood development, the developer reserves the right to modify or change plans, specifications, features and prices without notice. Materials may be substituted with equivalent or better at the developer's sole discretion. All dimensions and sizes are approximate and are based on architectural measurements. As reverse, flipped, and/or mirrored plans occur throughout the development please see architectural plans for unit layout if material to your decision to purchase. Illustrations, renderings, vignettes, and marketing materials provided are an artist's conception and are intended as a general reference only, not to be relied upon as they are subject to change without prior notice. Please ask one of the helpful sales staff to reference the most recent set of architectural set of construction drawings for most up to date dimensions, layouts, and other details. Please refer to disclosure statement for specific offering details. E. & O. E.

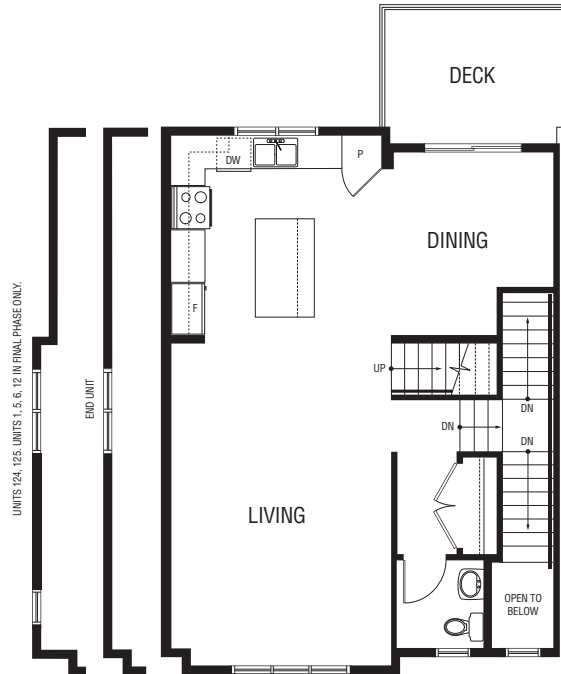


HAZELWOOD
 SOUTH GRANDVIEW

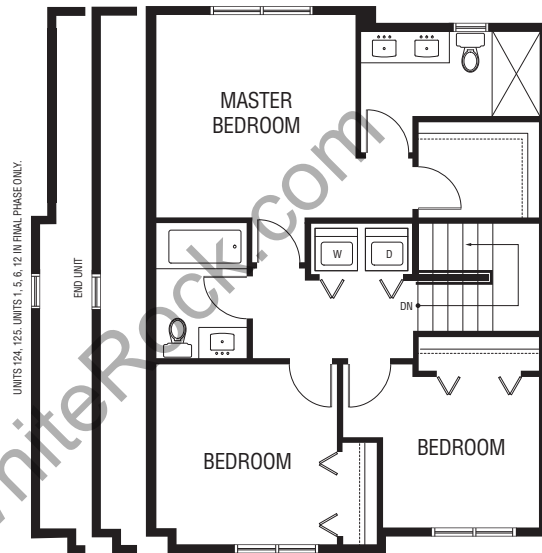
PLAN H

3 BED + FLEX, 3.5 BATH
1,781 - 1,832 SF

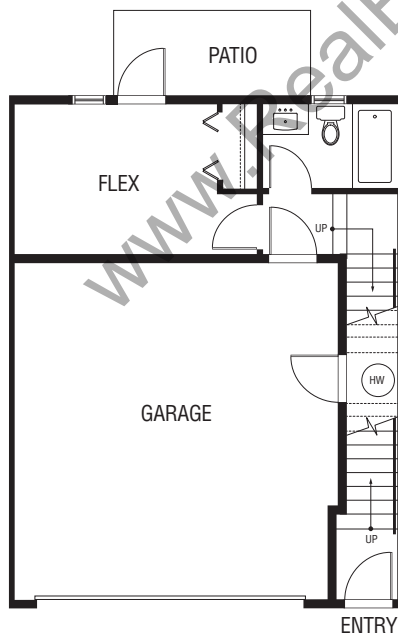
Bright open modern plan boasting gorgeous island kitchen, there is even a window over the sink. Barbeque deck properly located off the kitchen and dining areas. Convenient main floor powder room make entertaining a breeze. Flex room on lower level with convenient full bathroom, perfect for, home office, teenagers or grandparents. Spacious master suite with full walk-in closet. Dual ensuite sinks make getting ready together easier than ever.



MAIN



UPPER



LOWER

In our continuing effort to improve and maintain the high standard of the Hazelwood development, the developer reserves the right to modify or change plans, specifications, features and prices without notice. Materials may be substituted with equivalent or better at the developer's sole discretion. All dimensions and sizes are approximate and are based on architectural measurements. As reverse, flipped, and/or mirrored plans occur throughout the development please see architectural plans for unit layout if material to your decision to purchase. Illustrations, renderings, vignettes, and marketing materials provided are an artist's conception and are intended as a general reference only, not to be relied upon as they are subject to change without prior notice. Please ask one of the helpful sales staff to reference the most recent set of architectural set of construction drawings for most up to date dimensions, layouts, and other details. Please refer to disclosure statement for specific offering details. E. & O. E

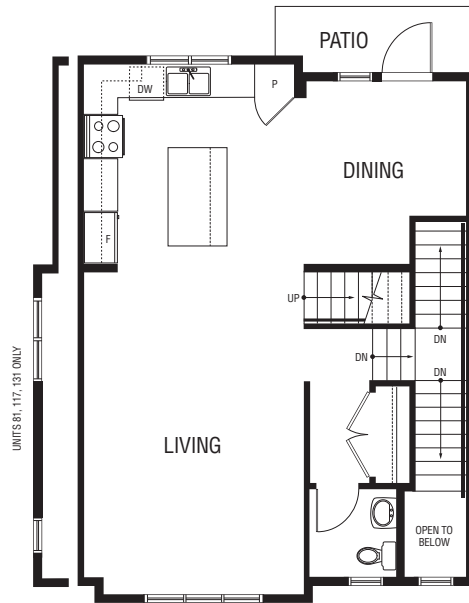


HAZELWOOD
 SOUTH GRANDVIEW

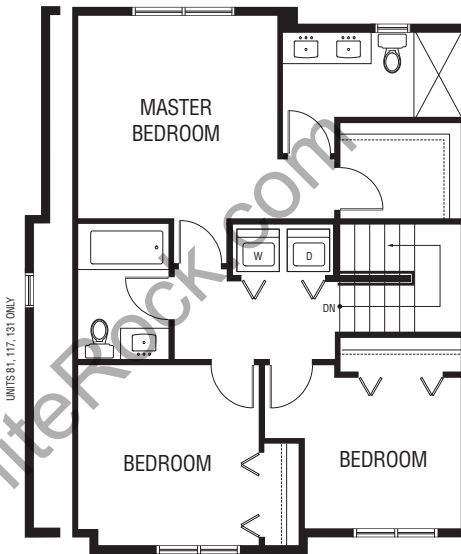
PLAN J

3 BED + FLEX, 3.5 BATH
1,795 - 1,845 SF

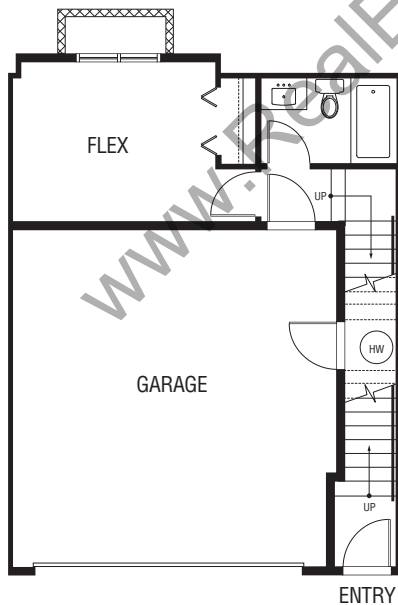
Bright open modern plan boasting gorgeous island kitchen, there is even a window over the sink. Barbeque deck properly located off the kitchen and dining areas. Convenient main floor powder room make entertaining a breeze. Flex room on lower level with convenient full bathroom, perfect for, home office, teenagers or grandparents. Spacious master suite with full walk-in closet. Dual ensuite sinks make getting ready together easier than ever.



MAIN



UPPER



LOWER

In our continuing effort to improve and maintain the high standard of the Hazelwood development, the developer reserves the right to modify or change plans, specifications, features and prices without notice. Materials may be substituted with equivalent or better at the developer's sole discretion. All dimensions and sizes are approximate and are based on architectural measurements. As reverse, flipped, and/or mirrored plans occur throughout the development please see architectural plans for unit layout if material to your decision to purchase. Illustrations, renderings, vignettes, and marketing materials provided are an artist's conception and are intended as a general reference only, not to be relied upon as they are subject to change without prior notice. Please ask one of the helpful sales staff to reference the most recent set of architectural set of construction drawings for most up to date dimensions, layouts, and other details. Please refer to disclosure statement for specific offering details. E. & O. E

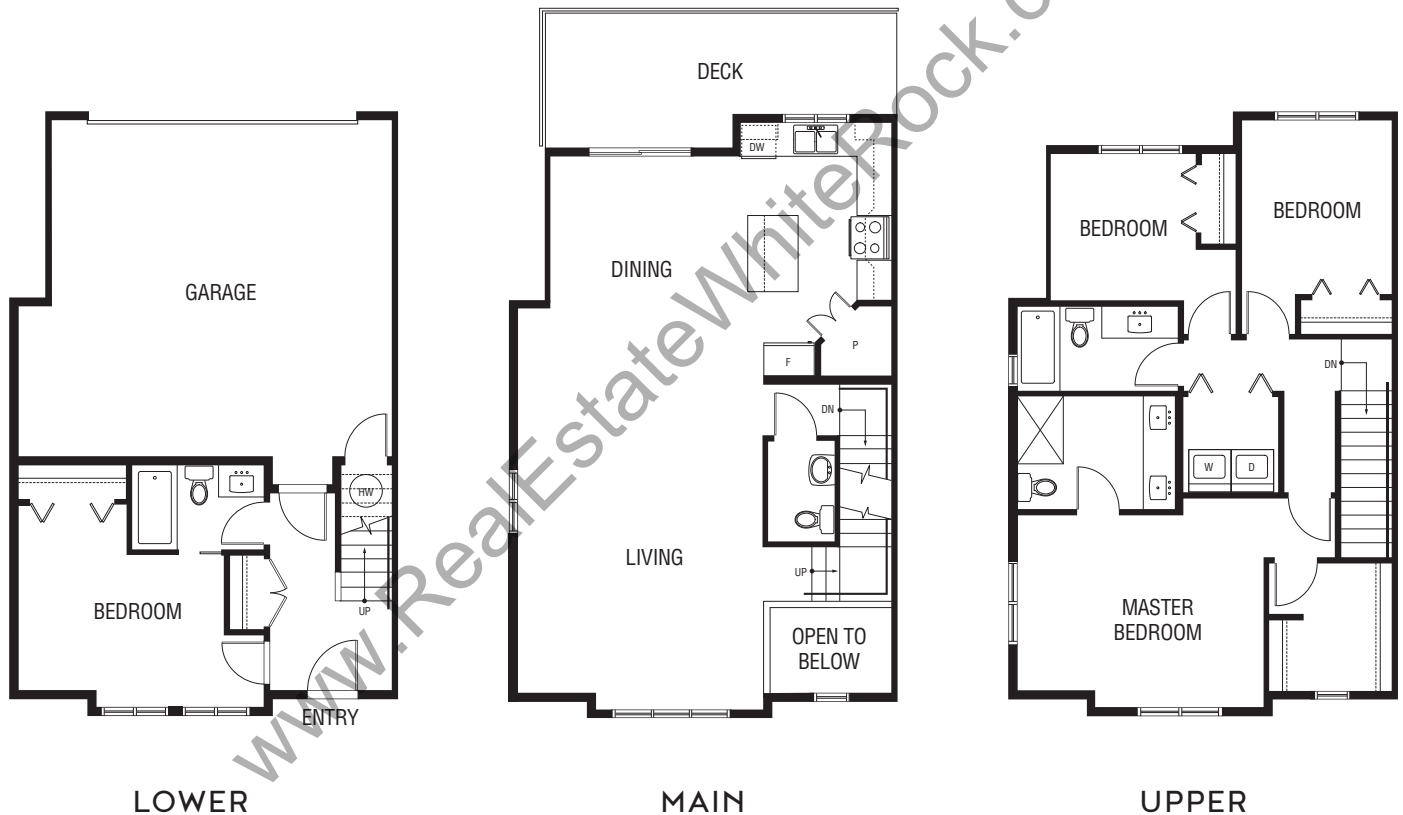


HAZELWOOD
 SOUTH GRANDVIEW

PLAN K

4 BED, 3.5 BATH
1,849 SF

Bright modern open layout with island kitchen featuring walk-in pantry, perfect for entertaining. Large barbeque deck properly positioned off the dining area. Convenient main floor powder room. Fourth bedroom on lower level with convenient full bathroom, perfect for teenagers or grandparents. Spacious master suite with luxury walk-in closet and convenient dual ensuite sinks.



In our continuing effort to improve and maintain the high standard of the Hazelwood development, the developer reserves the right to modify or change plans, specifications, features and prices without notice. Materials may be substituted with equivalent or better at the developer's sole discretion. All dimensions and sizes are approximate and are based on architectural measurements. As reverse, flipped, and/or mirrored plans occur throughout the development please see architectural plans for unit layout if material to your decision to purchase. Illustrations, renderings, vignettes, and marketing materials provided are an artist's conception and are intended as a general reference only, not to be relied upon as they are subject to change without prior notice. Please ask one of the helpful sales staff to reference the most recent set of architectural set of construction drawings for most up to date dimensions, layouts, and other details. Please refer to disclosure statement for specific offering details. E. & O. E.



HAZELWOOD
SOUTH GRANDVIEW

PLAN L

4 BED, 3.5 BATH
1,884 SF

Bright modern open layout with island kitchen perfect for entertaining. Large barbeque deck properly positioned off the dining area. Convenient main floor powder room. Fourth bedroom on lower level with convenient full bathroom, perfect for teenagers or grandparents. Spacious master suite with his & her closets and convenient dual ensuite sinks.



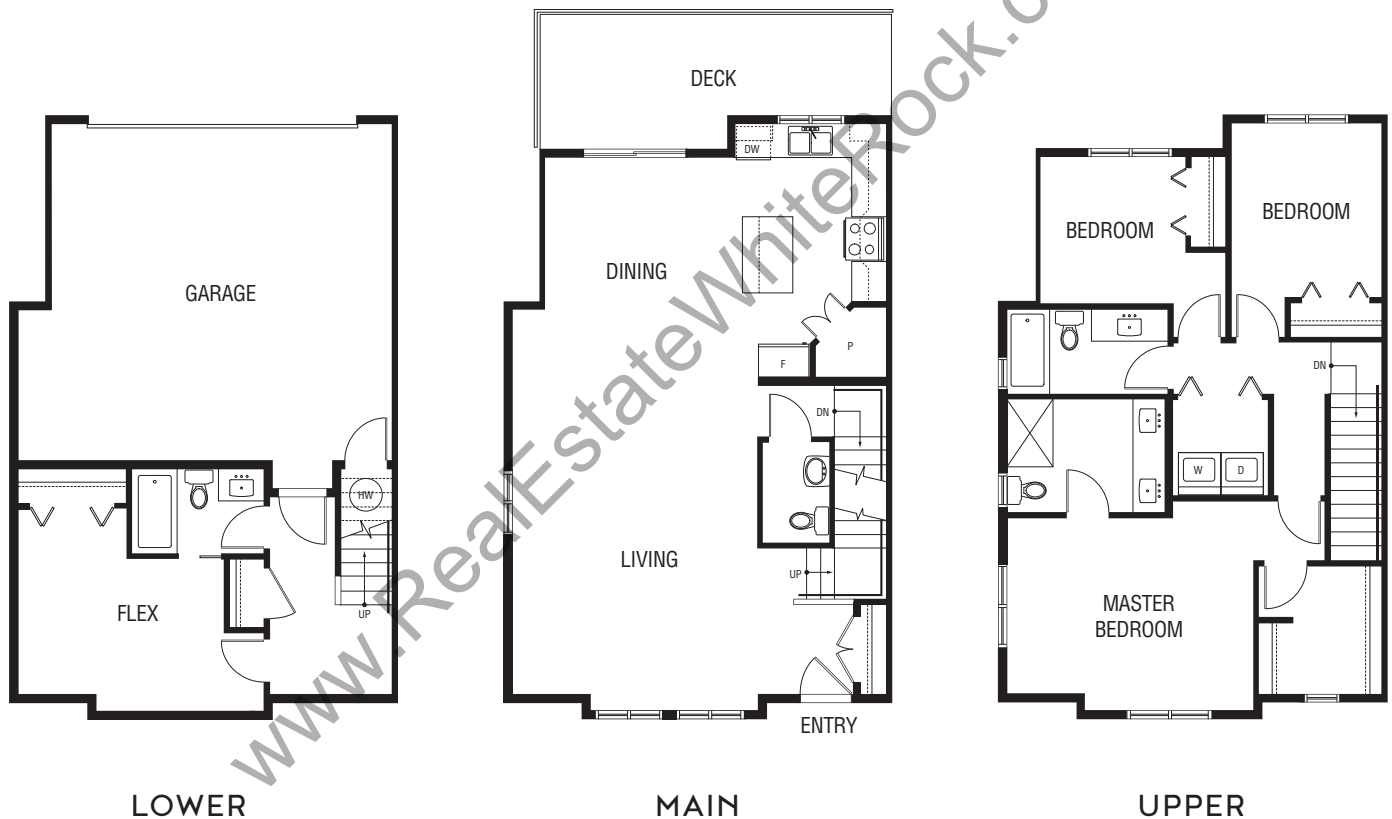
Note: Unit 55 has a different window and deck configuration off the dining area than shown here. Please see architectural plans if material to your decision to purchase.

In our continuing effort to improve and maintain the high standard of the Hazelwood development, the developer reserves the right to modify or change plans, specifications, features and prices without notice. Materials may be substituted with equivalent or better at the developer's sole discretion. All dimensions and sizes are approximate and are based on architectural measurements. As reverse, flipped, and/or mirrored plans occur throughout the development please see architectural plans for unit layout if material to your decision to purchase. Illustrations, renderings, vignettes, and marketing materials provided are an artist's conception and are intended as a general reference only, not to be relied upon as they are subject to change without prior notice. Please ask one of the helpful sales staff to reference the most recent set of architectural set of construction drawings for most up to date dimensions, layouts, and other details. Please refer to disclosure statement for specific offering details. E. & O. E

PLAN M

3 BED + FLEX, 3.5 BATH
1,887 SF

Bright modern open layout with island kitchen featuring walk-in pantry, perfect for entertaining. Large barbeque deck properly positioned off the dining area. Convenient main floor powder room. Flex room on lower level with convenient full bathroom, perfect for teenagers or grandparents. Spacious master suite with luxury walk-in closet and convenient dual ensuite sinks.

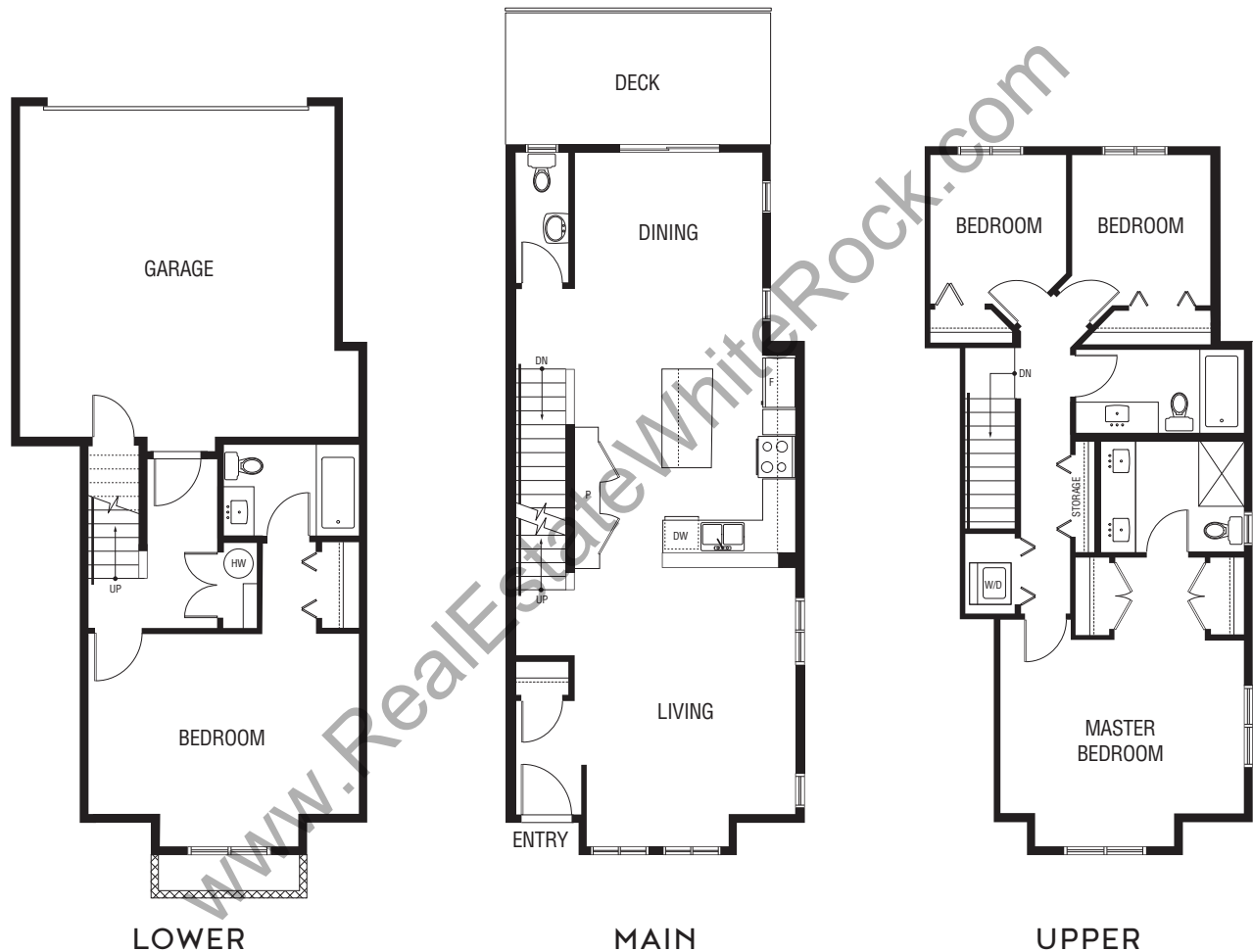


In our continuing effort to improve and maintain the high standard of the Hazelwood development, the developer reserves the right to modify or change plans, specifications, features and prices without notice. Materials may be substituted with equivalent or better at the developer's sole discretion. All dimensions and sizes are approximate and are based on architectural measurements. As reverse, flipped, and/or mirrored plans occur throughout the development please see architectural plans for unit layout if material to your decision to purchase. Illustrations, renderings, vignettes, and marketing materials provided are an artist's conception and are intended as a general reference only, not to be relied upon as they are subject to change without prior notice. Please ask one of the helpful sales staff to reference the most recent set of architectural set of construction drawings for most up to date dimensions, layouts, and other details. Please refer to disclosure statement for specific offering details. E. & O. E

PLAN N

4 BED, 3.5 BATH
1,893 SF

Bright modern open layout with centre island kitchen perfect for entertaining. Large barbeque deck properly positioned off the dining area. Convenient main floor powder room. Fourth bedroom on lower level with convenient full bathroom, perfect for teenagers or grandparents. Spacious master suite with his & her closets and convenient dual ensuite sinks.



In our continuing effort to improve and maintain the high standard of the Hazelwood development, the developer reserves the right to modify or change plans, specifications, features and prices without notice. Materials may be substituted with equivalent or better at the developer's sole discretion. All dimensions and sizes are approximate and are based on architectural measurements. As reverse, flipped, and/or mirrored plans occur throughout the development please see architectural plans for unit layout if material to your decision to purchase. Illustrations, renderings, vignettes, and marketing materials provided are an artist's conception and are intended as a general reference only, not to be relied upon as they are subject to change without prior notice. Please ask one of the helpful sales staff to reference the most recent set of architectural set of construction drawings for most up to date dimensions, layouts, and other details. Please refer to disclosure statement for specific offering details. E. & O. E

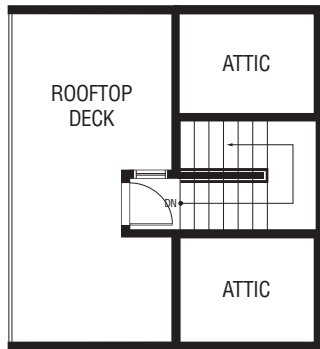


HAZELWOOD
SOUTH GRANDVIEW

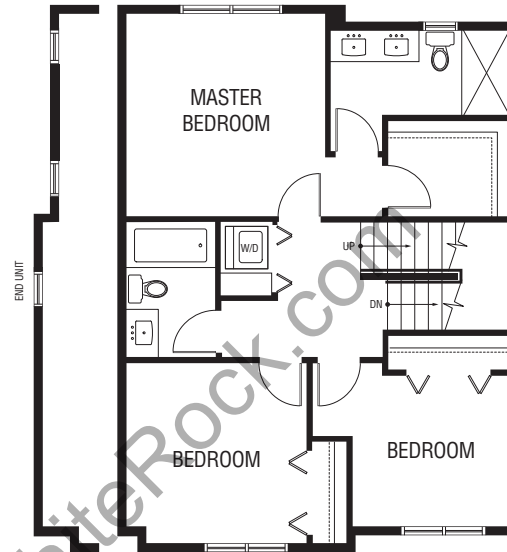
PLAN O

3 BED + FLEX, 3.5 BATH
1,875 - 1,925 SF

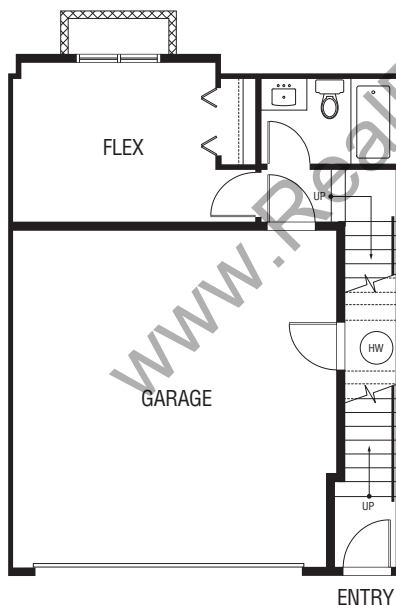
Bright open modern plan boasting gorgeous island kitchen, there is even a window over the sink. Convenient main floor powder room make entertaining a breeze. Flex room on lower level with convenient full bathroom, perfect for, home office, teenagers or grandparents. Spacious master suite with full walk-in closet. Dual ensuite sinks make getting ready together easier than ever. Exquisite rooftop deck for additional outdoor enjoyment.



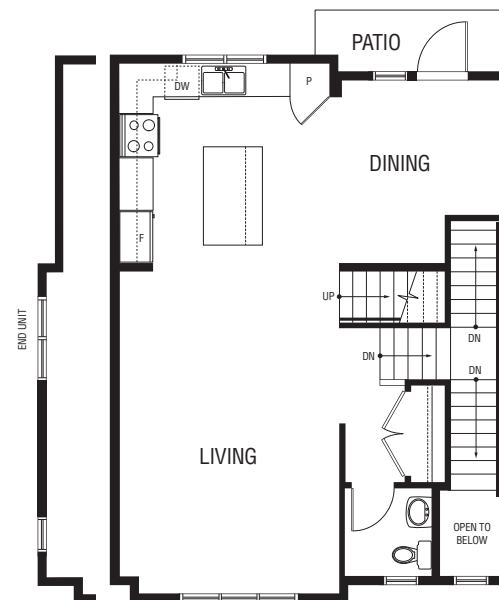
ROOFTOP



UPPER



LOWER



MAIN

In our continuing effort to improve and maintain the high standard of the Hazelwood development, the developer reserves the right to modify or change plans, specifications, features and prices without notice. Materials may be substituted with equivalent or better at the developer's sole discretion. All dimensions and sizes are approximate and are based on architectural measurements. As reverse, flipped, and/or mirrored plans occur throughout the development please see architectural plans for unit layout if material to your decision to purchase. Illustrations, renderings, vignettes, and marketing materials provided are an artist's conception and are intended as a general reference only, not to be relied upon as they are subject to change without prior notice. Please ask one of the helpful sales staff to reference the most recent set of architectural set of construction drawings for most up to date dimensions, layouts, and other details. Please refer to disclosure statement for specific offering details. E. & O. E.

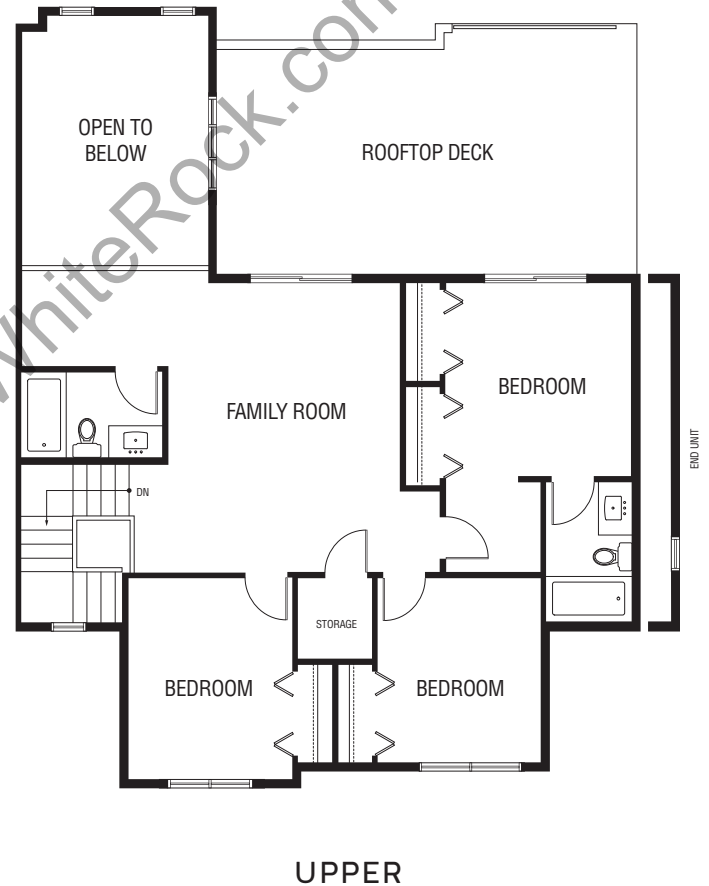
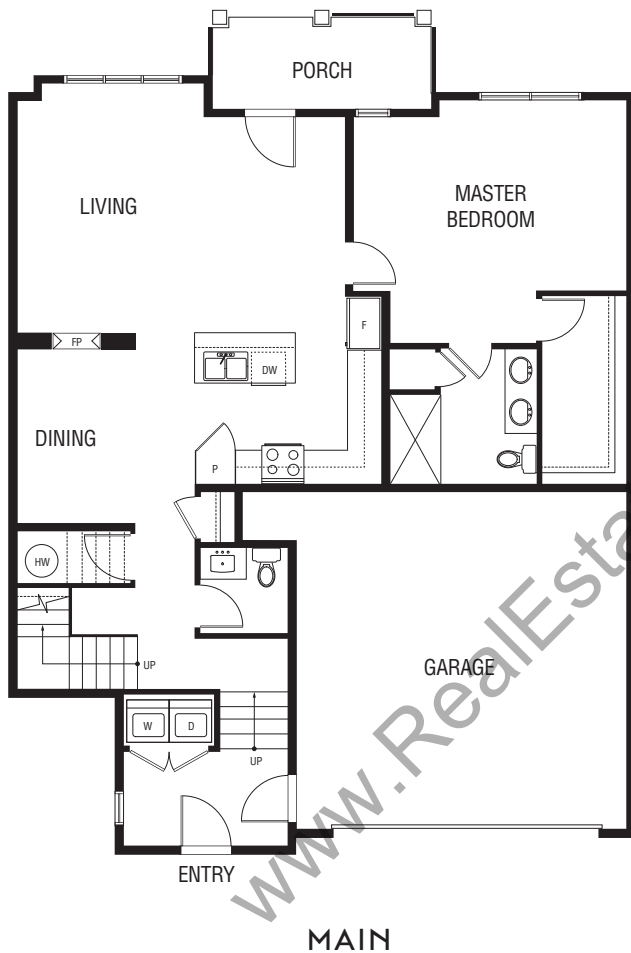


HAZELWOOD
SOUTH GRANDVIEW

PLAN P

4 BED, 3.5 BATH
2,177 - 2,250 SF

Unique bright and airy 2 level master on main home. Live on the main or on both levels featuring traditional layout with island kitchen and separate living and dining rooms. Upper level boasts 3 additional bedrooms, a family room and private roof deck. Perfect for family gatherings and entertaining.



NOTE: Units 1 and 7 have a different window/wall and deck or porch layouts than shown here. They also have a different main bathroom layout on the second floor and have additional dining and/or living area windows. Please review architectural detail if layout is material to your decision to purchase.

In our continuing effort to improve and maintain the high standard of the Hazelwood development, the developer reserves the right to modify or change plans, specifications, features and prices without notice. Materials may be substituted with equivalent or better at the developer's sole discretion. All dimensions and sizes are approximate and are based on architectural measurements. As reverse, flipped, and/or mirrored plans occur throughout the development please see architectural plans for unit layout if material to your decision to purchase. Illustrations, renderings, vignettes, and marketing materials provided are an artist's conception and are intended as a general reference only, not to be relied upon as they are subject to change without prior notice. Please ask one of the helpful sales staff to reference the most recent set of architectural set of construction drawings for most up to date dimensions, layouts, and other details. Please refer to disclosure statement for specific offering details. E. & O. E

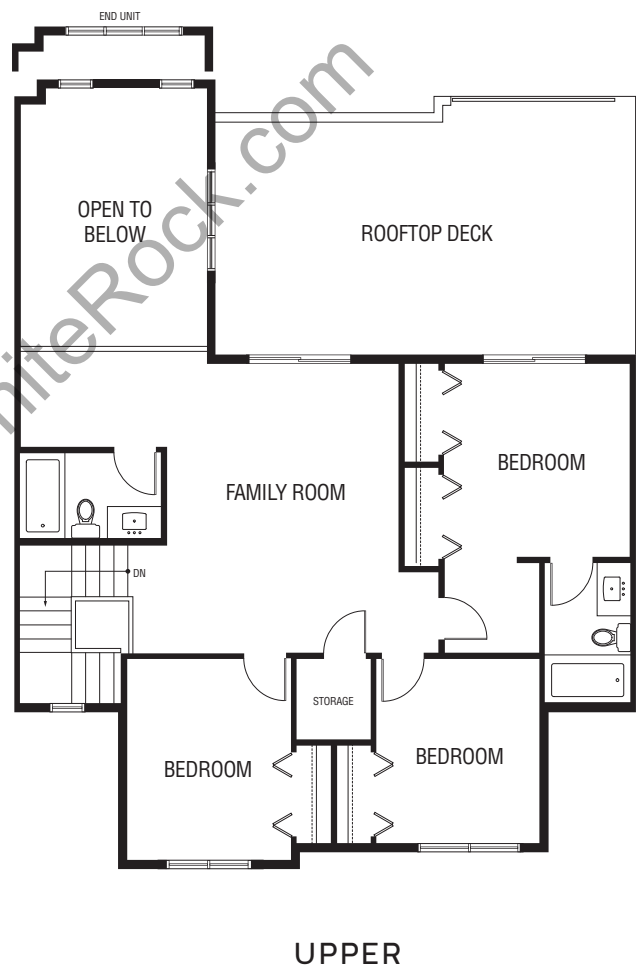
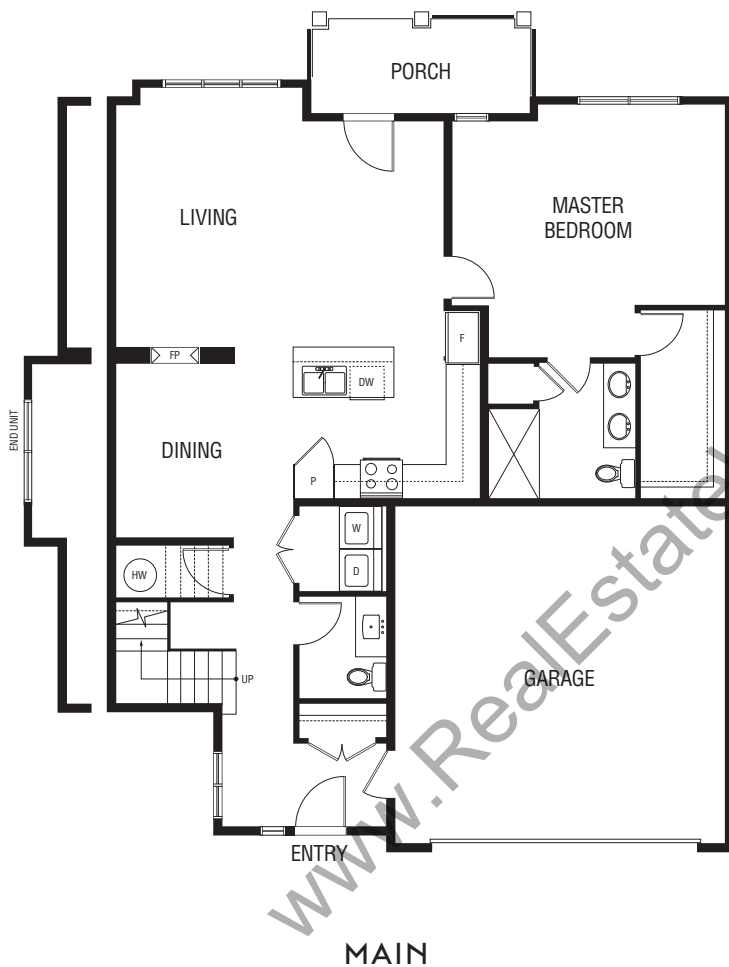


HAZELWOOD
SOUTH GRANDVIEW

PLAN Q

4 BED, 3.5 BATH
2,185 - 2,240 SF

Unique bright and airy 2 level master on main home. Live on the main or on both levels featuring traditional layout with island kitchen and separate living and dining rooms. Upper level boasts 3 additional bedrooms, a family room and private roof deck. Perfect for family gatherings and entertaining.



Note: Units 96 and 100 have a second sink in the main bathroom on second floor.
Please review architectural detail if layout is material to your decision to purchase.

In our continuing effort to improve and maintain the high standard of the Hazelwood development, the developer reserves the right to modify or change plans, specifications, features and prices without notice. Materials may be substituted with equivalent or better at the developer's sole discretion. All dimensions and sizes are approximate and are based on architectural measurements. As reverse, flipped, and/or mirrored plans occur throughout the development please see architectural plans for unit layout if material to your decision to purchase. Illustrations, renderings, vignettes, and marketing materials provided are an artist's conception and are intended as a general reference only, not to be relied upon as they are subject to change without prior notice. Please ask one of the helpful sales staff to reference the most recent set of architectural set of construction drawings for most up to date dimensions, layouts, and other details. Please refer to disclosure statement for specific offering details. E. & O. E



HAZELWOOD
SOUTH GRANDVIEW