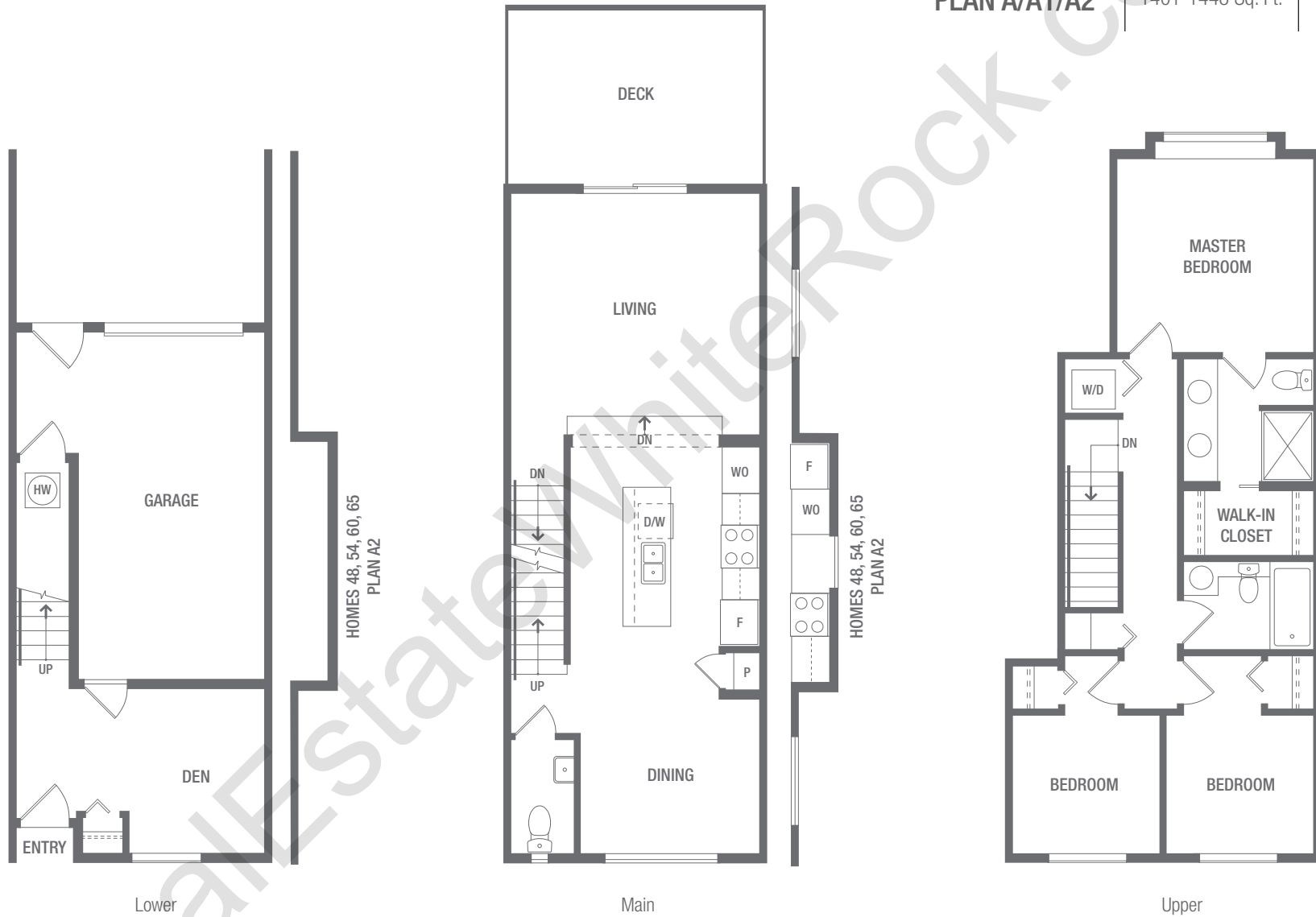




# THE CROSSING

TOWNHOMES

PLAN A/A1/A2 | 1401-1448 Sq. Ft. | 3 Bed + Den  
2.5 Bath



Exterior electrical rooms are attached to the exterior of select homes throughout the community, see architectural plans.

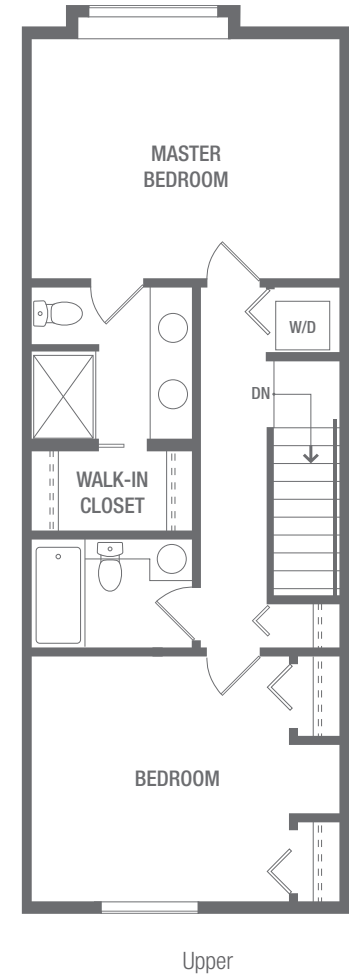
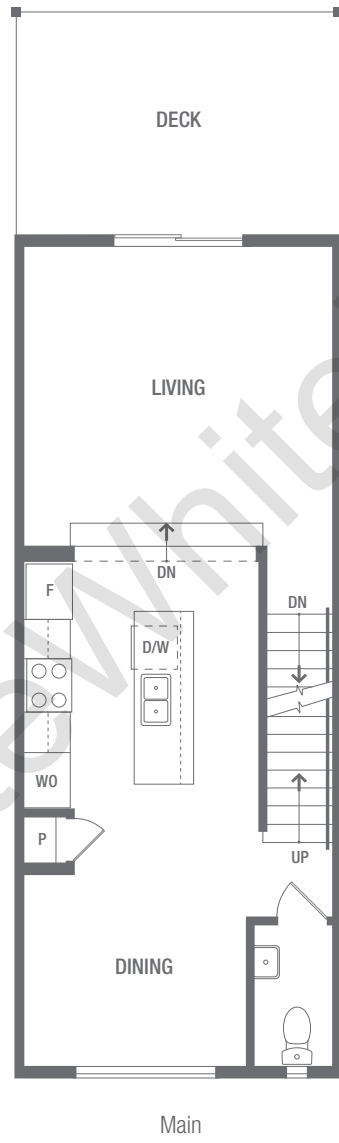
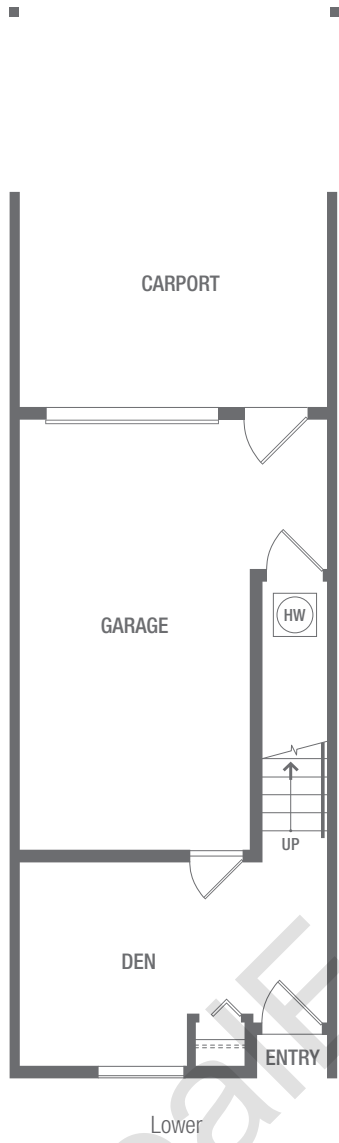
In our continuing effort to improve and maintain the high standard of The Crossing development, the developer reserves the right to modify or change plans, specifications, features and prices without notice. Materials may be substituted with equivalent or better at the developer's sole discretion. All dimensions and sizes are approximate and are based on Architectural measurements. As reverse and/or mirrored plans occur throughout the development, please see architectural plans. Renderings are an artist's conception and are intended as a general reference only. Please refer to disclosure statement for specific offering details. E.&O.E.



# THE CROSSING

TOWNHOMES

**PLAN A3** | 1401 Sq. Ft. | 2 Bed + Den  
2.5 Bath



Exterior electrical rooms are attached to the exterior of select homes throughout the community, see architectural plans.

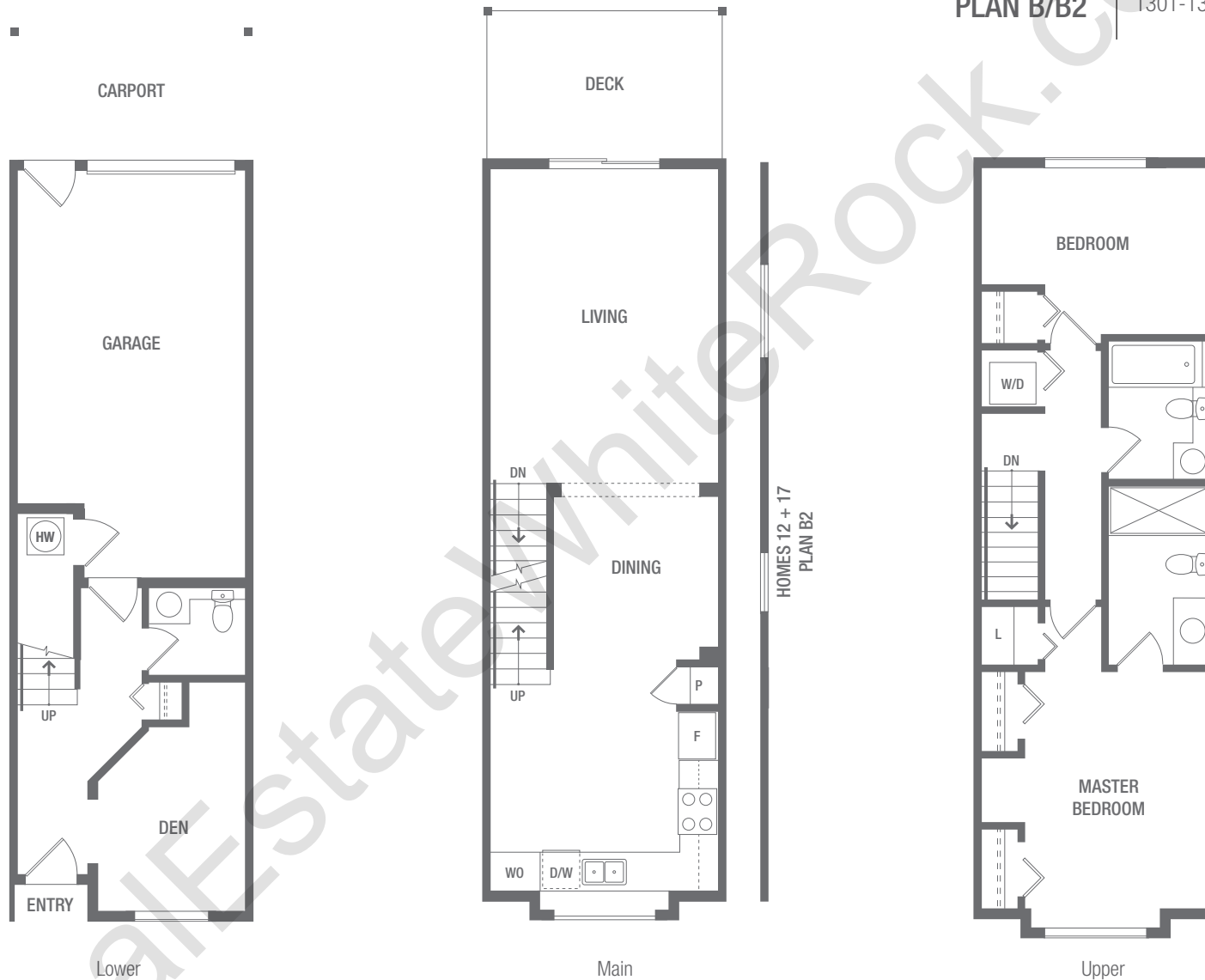
In our continuing effort to improve and maintain the high standard of The Crossing development, the developer reserves the right to modify or change plans, specifications, features and prices without notice. Materials may be substituted with equivalent or better at the developer's sole discretion. All dimensions and sizes are approximate and are based on Architectural measurements. As reverse and/or mirrored plans occur throughout the development, please see architectural plans. Renderings are an artist's conception and are intended as a general reference only. Please refer to disclosure statement for specific offering details. E.&O.E.



# THE CROSSING

TOWNHOMES

**PLAN B/B2** | 1301-1318 Sq. Ft. | 2 Bed + Den  
2.5 Bath



Exterior electrical rooms are attached to the exterior of select homes throughout the community, see architectural plans.

In our continuing effort to improve and maintain the high standard of The Crossing development, the developer reserves the right to modify or change plans, specifications, features and prices without notice. Materials may be substituted with equivalent or better at the developer's sole discretion. All dimensions and sizes are approximate and are based on Architectural measurements. As reverse and/or mirrored plans occur throughout the development, please see architectural plans. Renderings are an artist's conception and are intended as a general reference only. Please refer to disclosure statement for specific offering details. E.&O.E.



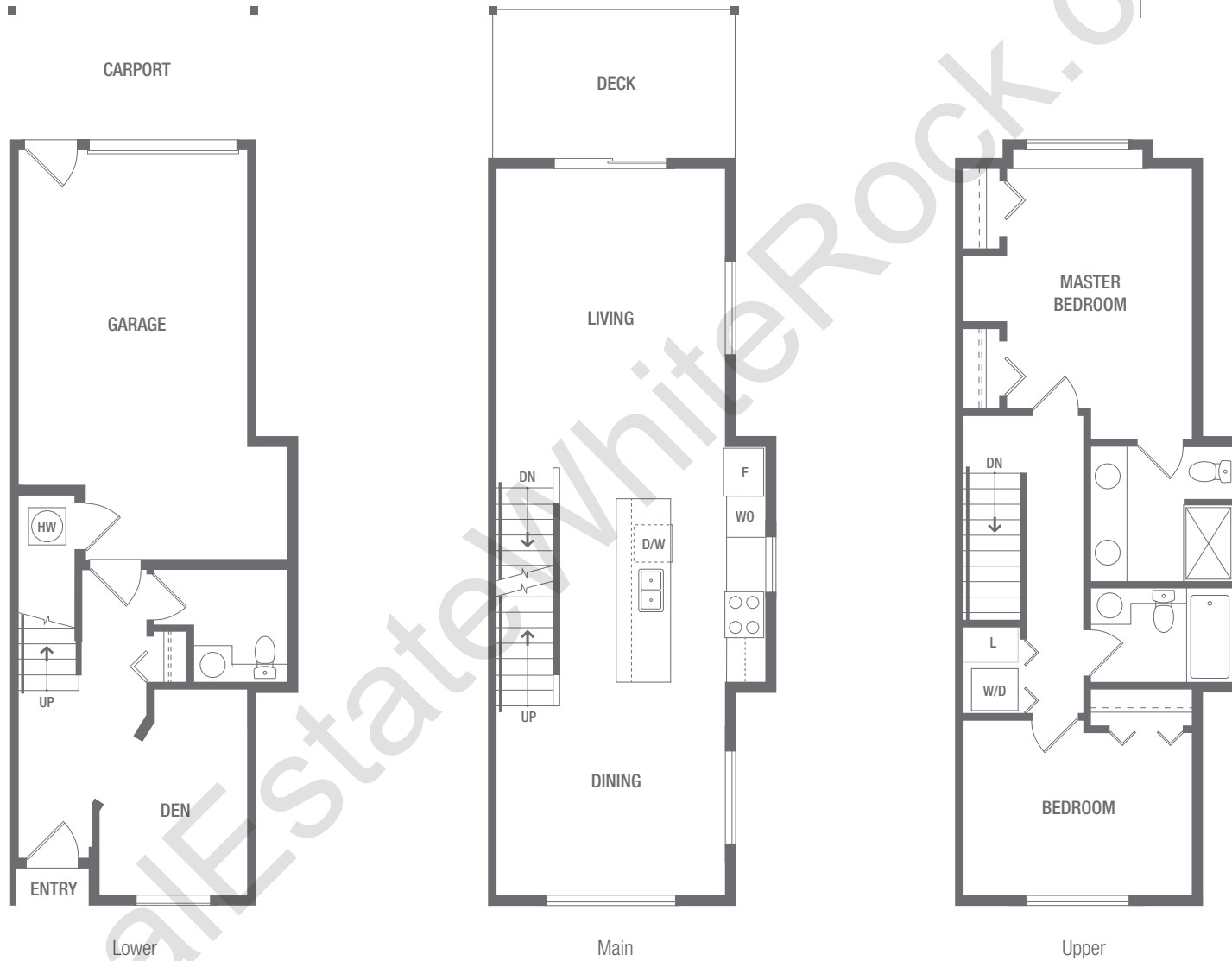
# THE CROSSING

TOWNHOMES

PLAN B1

1370 Sq. Ft.

2 Bed + Den  
2.5 Bath



Exterior electrical rooms are attached to the exterior of select homes throughout the community, see architectural plans.

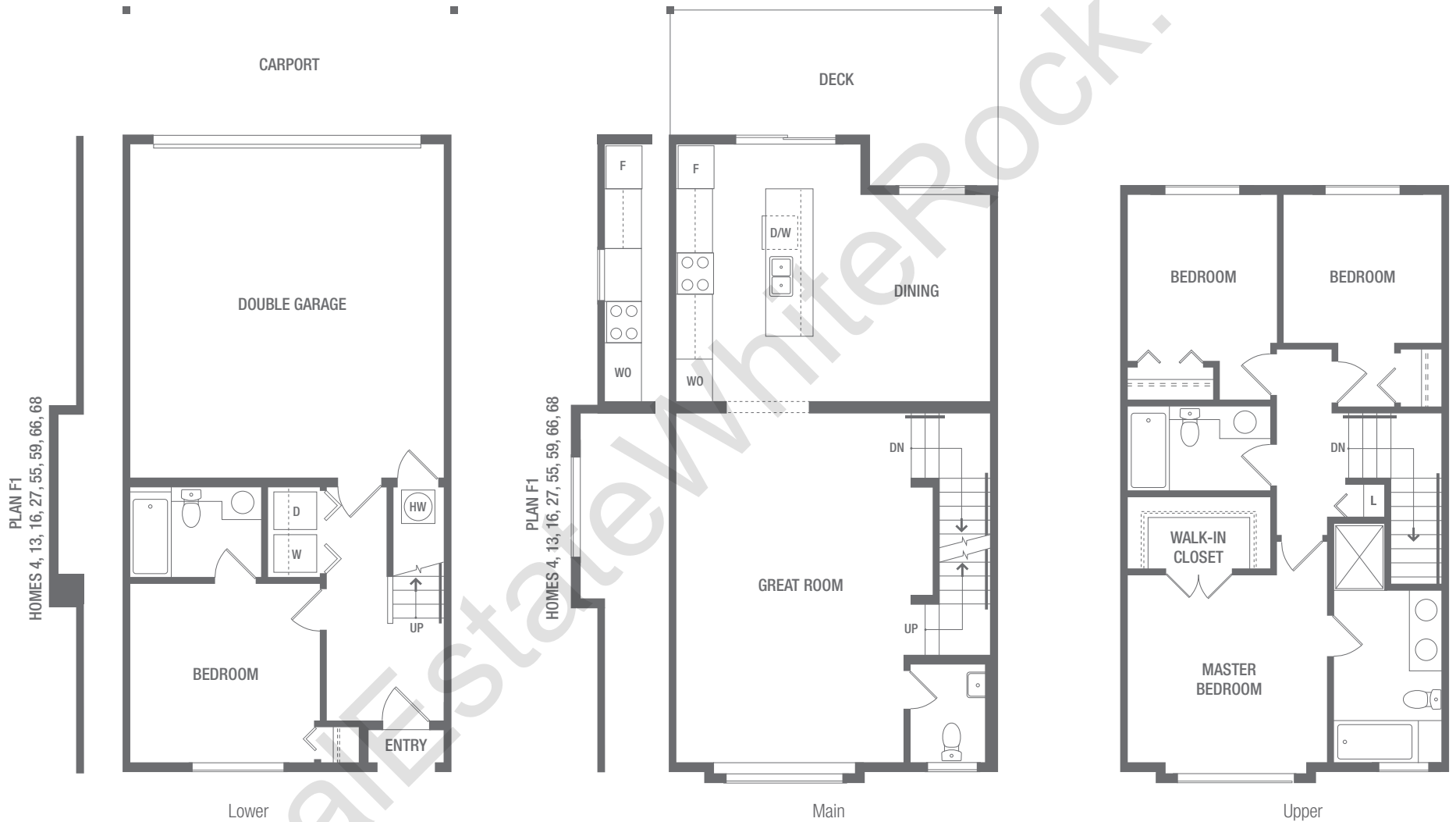
In our continuing effort to improve and maintain the high standard of The Crossing development, the developer reserves the right to modify or change plans, specifications, features and prices without notice. Materials may be substituted with equivalent or better at the developer's sole discretion. All dimensions and sizes are approximate and are based on Architectural measurements. As reverse and/or mirrored plans occur throughout the development, please see architectural plans. Renderings are an artist's conception and are intended as a general reference only. Please refer to disclosure statement for specific offering details. E.&O.E.



# THE CROSSING

TOWNHOMES

PLAN F/F1 | 1736-1774 Sq. Ft. | 4 Bed  
3.5 Bath



Exterior electrical rooms are attached to the exterior of select homes throughout the community, see architectural plans.

In our continuing effort to improve and maintain the high standard of The Crossing development, the developer reserves the right to modify or change plans, specifications, features and prices without notice. Materials may be substituted with equivalent or better at the developer's sole discretion. All dimensions and sizes are approximate and are based on Architectural measurements. As reverse and/or mirrored plans occur throughout the development, please see architectural plans. Renderings are an artist's conception and are intended as a general reference only. Please refer to disclosure statement for specific offering details. E.&O.E.



# THE CROSSING

TOWNHOMES

PLAN F2 | 1760 Sq. Ft. | 4 Bed  
3.5 Bath



Exterior electrical rooms are attached to the exterior of select homes throughout the community, see architectural plans.

In our continuing effort to improve and maintain the high standard of The Crossing development, the developer reserves the right to modify or change plans, specifications, features and prices without notice. Materials may be substituted with equivalent or better at the developer's sole discretion. All dimensions and sizes are approximate and are based on Architectural measurements. As reverse and/or mirrored plans occur throughout the development, please see architectural plans. Renderings are an artist's conception and are intended as a general reference only. Please refer to disclosure statement for specific offering details. E.&O.E.



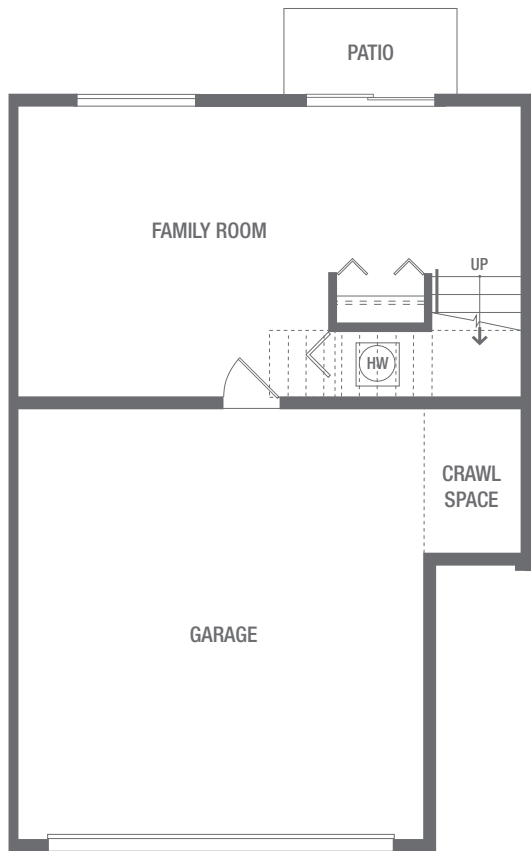
# THE CROSSING

TOWNHOMES

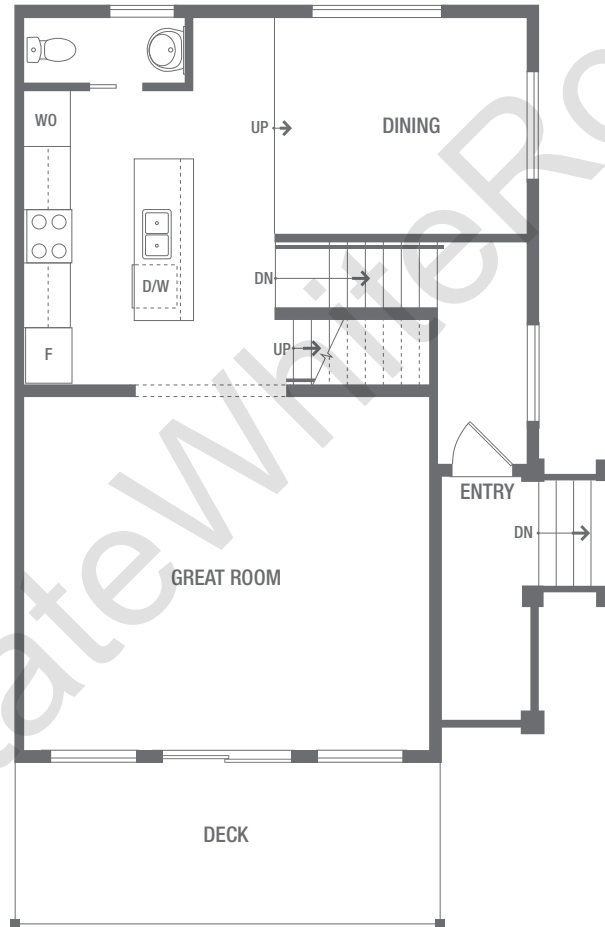
PLAN F3

1948 Sq. Ft.

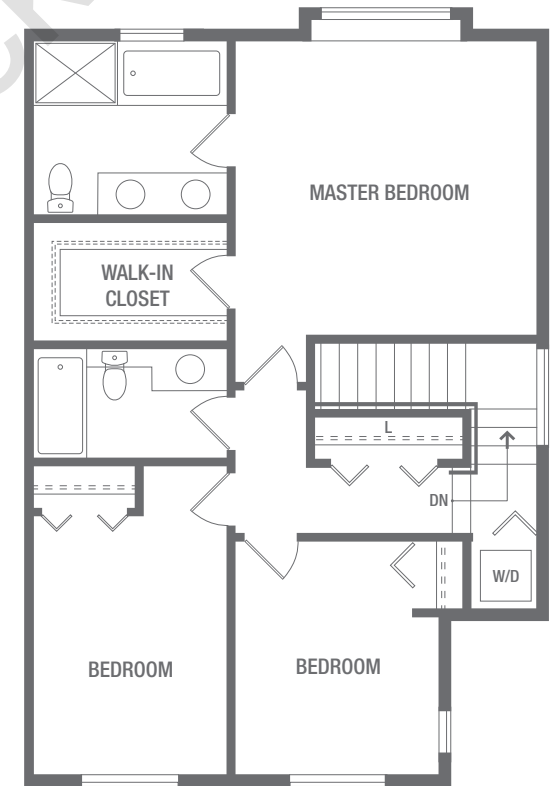
3 Bed + Rec  
2.5 Bath



Lower



Main



Upper

Exterior electrical rooms are attached to the exterior of select homes throughout the community, see architectural plans.

In our continuing effort to improve and maintain the high standard of The Crossing development, the developer reserves the right to modify or change plans, specifications, features and prices without notice. Materials may be substituted with equivalent or better at the developer's sole discretion. All dimensions and sizes are approximate and are based on Architectural measurements. As reverse and/or mirrored plans occur throughout the development, please see architectural plans. Renderings are an artist's conception and are intended as a general reference only. Please refer to disclosure statement for specific offering details. E.&O.E.